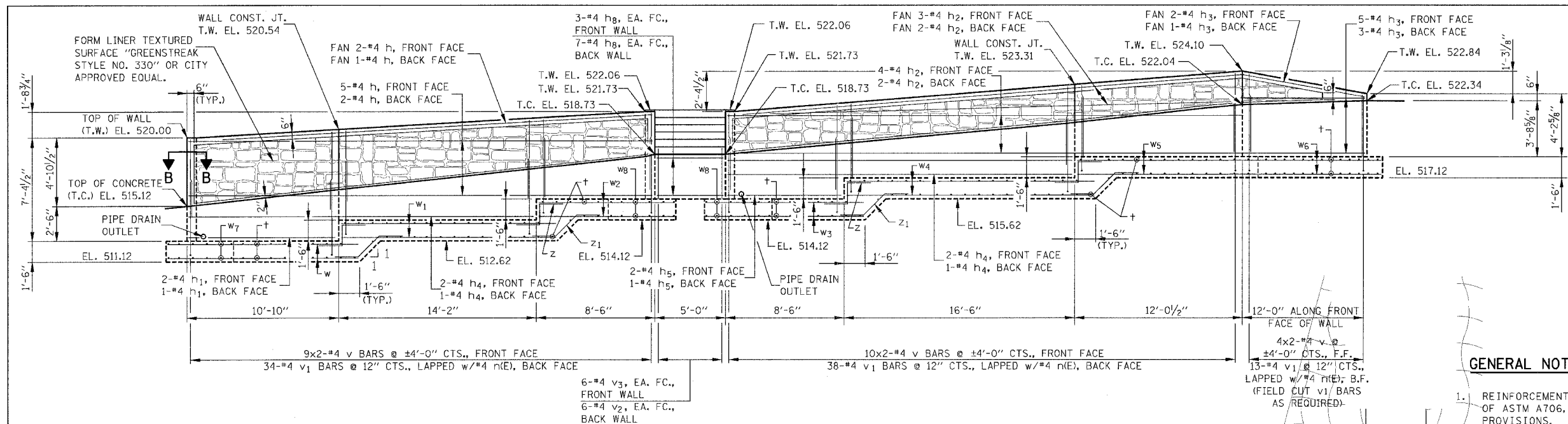


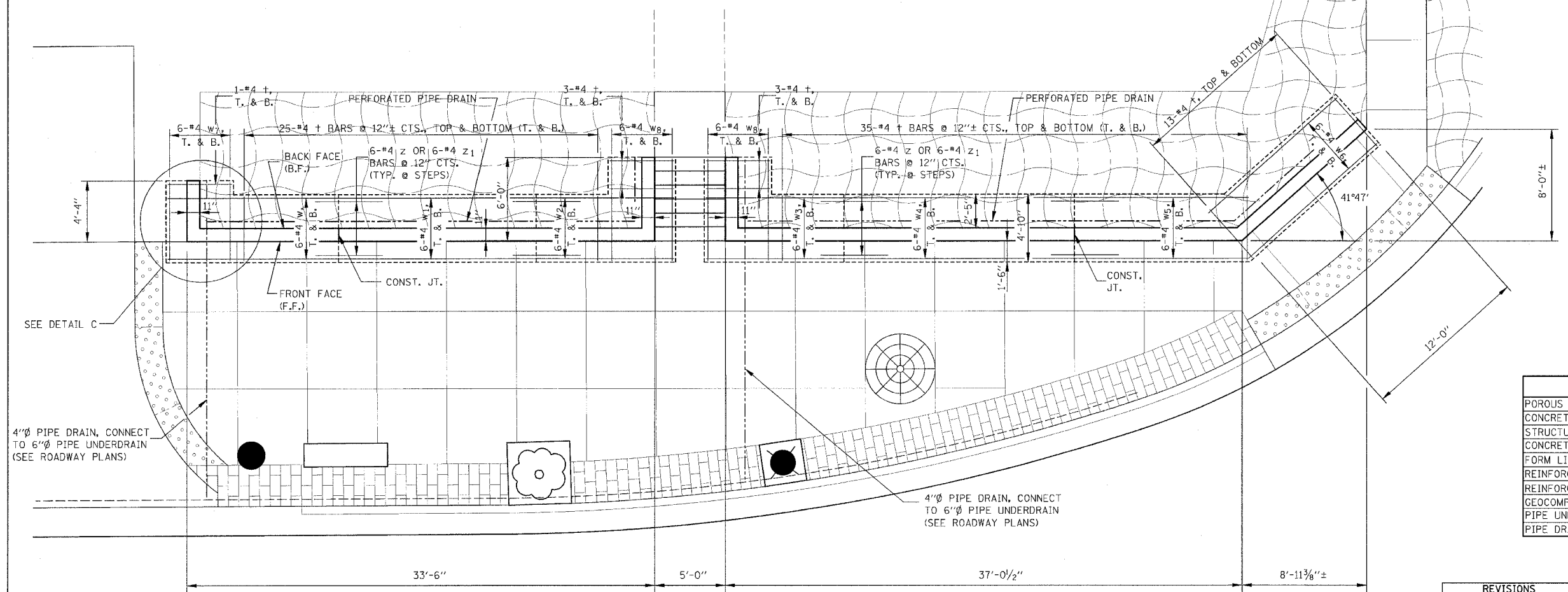
F.A.L. RTE.	SECTION	COUNTY	TOTAL SHEETS	SHEET NO.
8419	99-00048-01-PV	FAYETTE	142	100
STA.	TO STA.			
FED. ROAD DIST. NO.	ILLINOIS	FED. AID PROJECT		
CONTRACT NO. 95500				



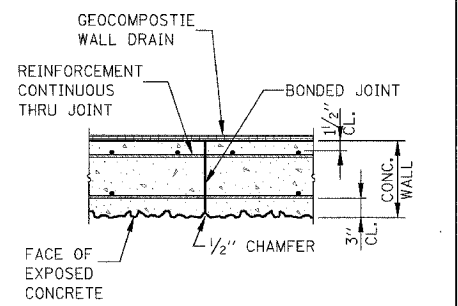
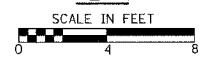
ELEVATION

GENERAL NOTES

1. REINFORCEMENT BARS SHALL CONFORM TO THE REQUIREMENTS OF ASTM A706, GRADE 60 (IL MODIFIED). SEE SPECIAL PROVISIONS.
2. REINFORCEMENT BARS DESIGNATED (E) SHALL BE EPOXY COATED.



PLAN



WALL CONSTRUCTION JOINT

TOTAL BILL OF MATERIAL

ITEM	UNIT	TOTAL
POROUS GRANULAR EMBANKMENT, SPECIAL	CU YD	28
CONCRETE RETAINING WALL REMOVAL	FOOT	61
STRUCTURE EXCAVATION	CU YD	221
CONCRETE STRUCTURES	CU YD	49.8
FORM LINER TEXTURED SURFACE	SQ FT	181
REINFORCEMENT BARS	POUND	3,110
REINFORCEMENT BARS, EPOXY COATED	POUND	390
GEOCOMPOSITE WALL DRAIN	SQ YD	40
PIPE UNDERDRAINS FOR STRUCTURES 4"	FOOT	90
PIPE DRAINS 4" (SPECIAL)	FOOT	39

REVISIONS	
NAME	DATE

ILLINOIS DEPARTMENT OF TRANSPORTATION

**RETAINING WALL
PLAN & ELEVATION**

SCALE: VERT. _____
HORIZ. _____

DATE _____

DRAWN BY KOJ KHL
CHECKED BY BWC/BGH

CADD FILE: /4812/r/wall_gne_480.dgn
PLOTTED: 01/23/2007

H.M. & G. NO. 4812