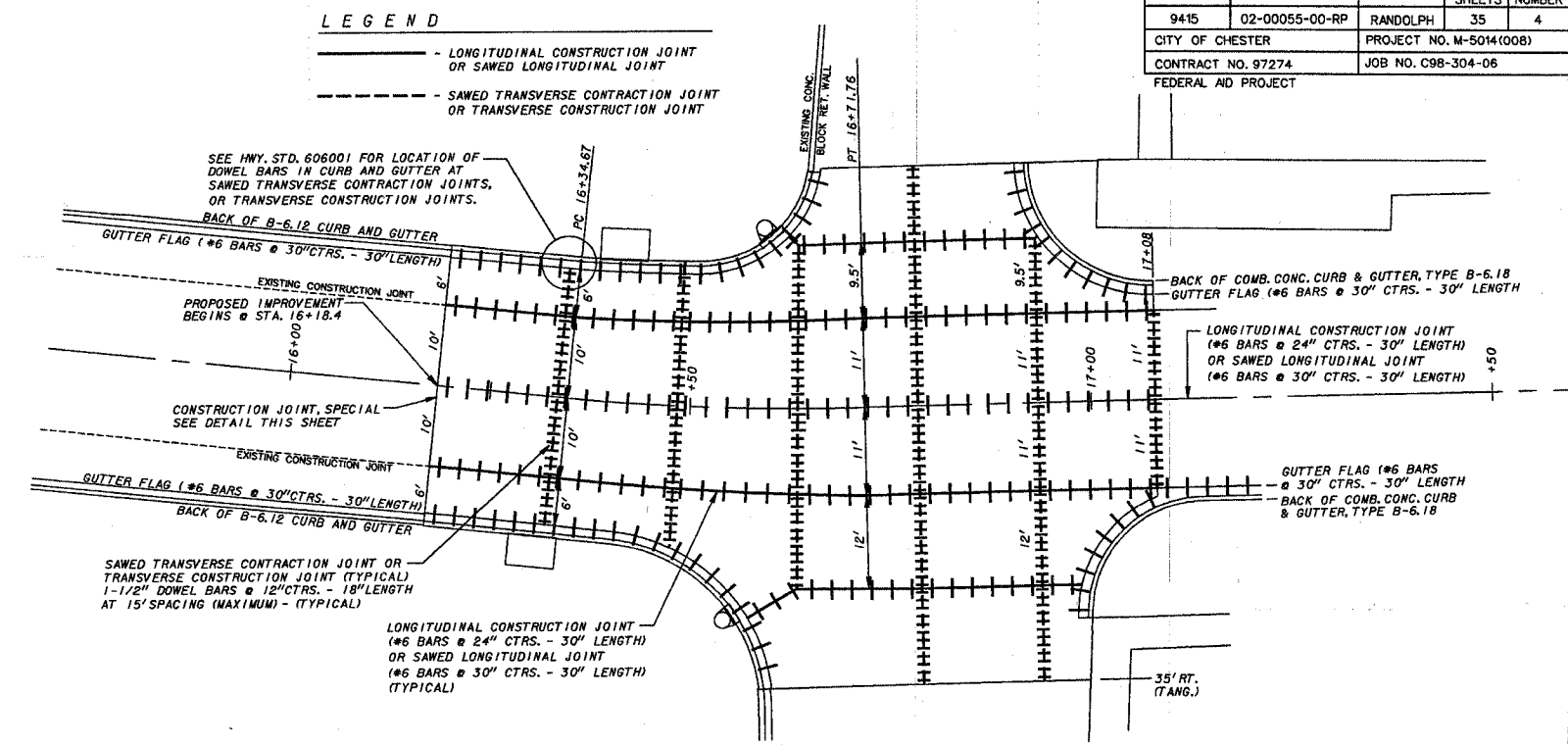


F.A.U. ROUTE	SECTION	COUNTY	TOTAL SHEETS	SHEET NUMBER
9415	02-00055-00-RP	RANDOLPH	35	4
CITY OF CHESTER		PROJECT NO. M-5014(00B)		
CONTRACT NO. 97274		JOB NO. C98-304-06		
FEDERAL AID PROJECT				

SIGNAGE SCHEDULE

EXISTING LOCATION STATION, OFFSET	PROPOSED LOCATION STATION, OFFSET	EACH	EACH	EACH	EACH	EACH	EACH	EACH	EACH	EACH	EACH	EACH	EACH	EACH	EACH	TOTAL SQ. FT.
16+97, 38'RT	16+97, 36'RT			1											1	1
19+54, 41'LT	N/A														1	1
20+01, 22'LT	19+95, 32'LT				1										1	1
20+22, 25'LT	20+08, 22'LT			1											1	1
21+11, 11'RT	21+26, 22'RT			1											1	1
22+81, 33'RT	N/A														1	1
25+20, 28'RT	25+20, 25'RT			1											1	1
25+54, 17'RT	25+64, 17'RT														1	1
26+80, 17'RT	26+60, 17'RT														1	1
28+57, 45'LT	28+52, 29'LT			1											1	1
30+57, 21'LT	30+60, 23'LT														1	1
32+36, 17'RT	N/A														1	1
34+03, 19'RT	34+05, 19'RT				1										1	1
35+70, 25'LT	35+69, 22'LT			1											1	1
36+75, 20'LT	36+75, 20'LT														1	1
37+50, 19'RT	37+50, 19'RT														1	1
37+75, 20'LT	37+75, 20'LT														1	1
38+40, 20'RT	38+52, 28'RT			1											1	1
TOTALS		2	2	6	1	1	1	1	1	2	1	1	1	15	16	102.3
TOTAL SIGN FACE AREA (SQ. FT.)		10.0	10.0	37.5	9.0	9.0	8.0	6.25	6.25	6.25	10.0	5.55	4.5	N/A	N/A	103.0

* This sign and post will be removed and reinstalled by the City of Chester
 ** These existing signs and posts shall be removed by the Contractor and delivered to the Chester Street Department, 802 Servant Street and shall become the property of the City of Chester. The cost of performing this work shall not be paid for separately, but shall be included in the contract.



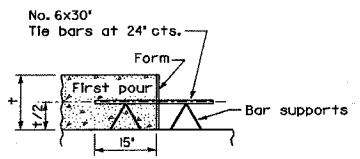
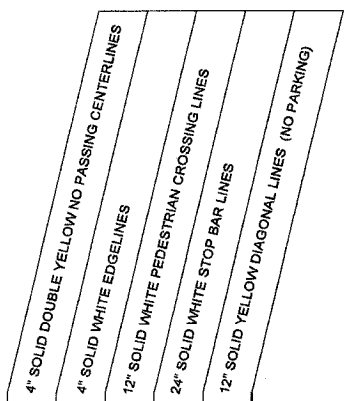
PER ARTICLE 606.07 OF THE STANDARD SPECIFICATIONS FOR ROAD AND BRIDGE CONSTRUCTION, THE CURB AND GUTTER MAY BE CONSTRUCTED MONOLITHICALLY WITH THE PCC PAVEMENT. IF MONOLITHIC CONSTRUCTION IS PERFORMED, THE BARS BETWEEN THE CURB & GUTTER AND THE PCC PAVEMENT CAN BE ELIMINATED.

Revised 4-18-07

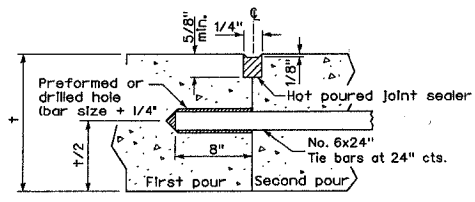
PAVEMENT MARKING SCHEDULE

LOCATION (STATION)	OFFSET *	FOOT	FOOT	FOOT	FOOT	FOOT
16+18 To 38+68	CENTERLINE	2,250				
17+08 To 19+78	11.17'LT		270			
16+58 To 17+00	27'RT and 32'RT			84		
16+80 To 17+00	36'RT				20	
17+08 To 19+30	LEFT					210
20+08 To 20+64	13.58'LT and 18.58'LT				108	
20+13 To 20+30	22'LT					20
21+01 To 21+21	30'RT To 22'RT					24
24+97 To 25+15	22'RT To 25'RT					18
28+36 To 29+18	13.58'LT and 18.58'LT				140	
28+57 To 28+79	29'LT To 22'LT					24
35+65 To 36+25	13.58'LT and 18.58'LT				106	
35+73 To 35+85	22'LT					22
38+54 To 38+68	23'LT To CENTERLINE					28
McFERRON STREET	CENTERLINE	68				
TOTALS		4,638	270	438	156	210

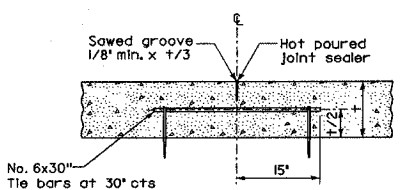
* ALL OFFSETS ARE TO CENTER OF STRIPE



LONGITUDINAL CONSTRUCTION JOINT
(TIE BAR FORMED IN PLACE)

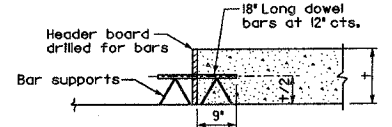


LONGITUDINAL CONSTRUCTION JOINT
(TIE BAR GROUTED IN PLACE)

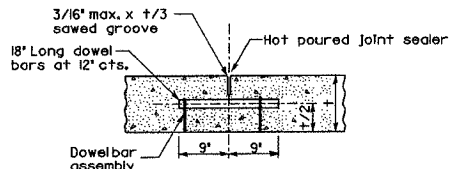


SAWED LONGITUDINAL JOINT

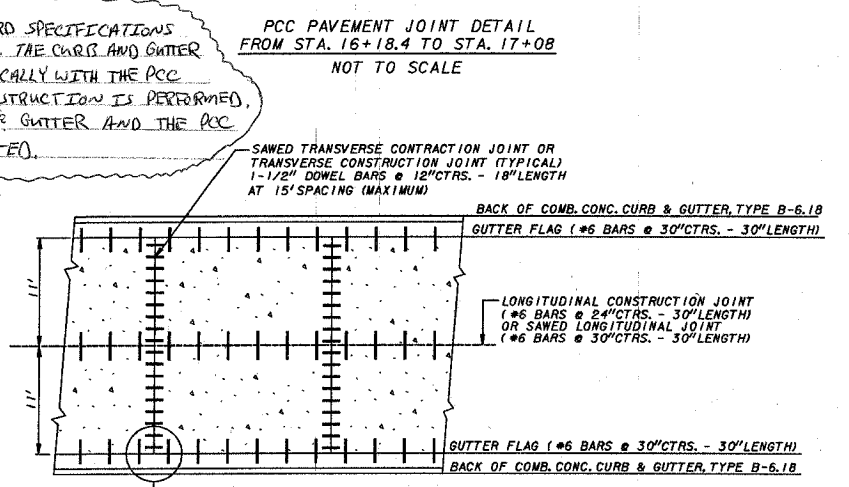
DOWEL BAR TABLE	
PAVEMENT THICKNESS	DOWEL BAR DIAMETER
8"	1-1/2"



TRANSVERSE CONSTRUCTION JOINT



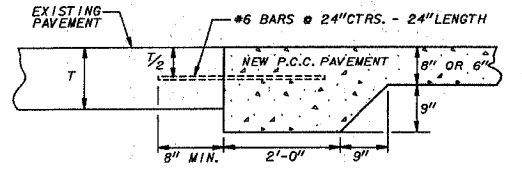
SAWED TRANSVERSE CONTRACTION JOINT



PCC PAVEMENT JOINT DETAIL
FROM STA. 16+18.4 TO STA. 17+08
NOT TO SCALE

SEE HWY. STD. 606001 FOR LOCATION OF DOWEL BARS IN CURB & GUTTER, TYPE B-6.18 SAWED TRANSVERSE CONTRACTION JOINTS, OR TRANSVERSE CONSTRUCTION JOINTS.

DETAIL OF REINFORCEMENT FOR PCC PAVEMENT
FROM STA. 17+08 TO STA. 35+50
NOT TO SCALE



DETAIL OF CONSTRUCTION JOINT, SPECIAL
NOT TO SCALE
TO BE CONSTRUCTED AT ALL LOCATIONS WHERE NEW CONCRETE PAVEMENT ABUTS EXISTING CONCRETE AND FLEXIBLE PAVEMENT.

NOTE: CONTRACTOR TO SAW EDGE OF EXISTING PAVEMENT TO THE SATISFACTION OF THE ENGINEER TO PROVIDE ACCEPTABLE CONSTRUCTION JOINT. #6 BARS SHALL BE DRILLED AND GROUTED INTO PLACE AS SHOWN. THE EDGE OF THE PROPOSED PAVEMENT SHALL BE CONSTRUCTED AS SHOWN. DELETE #6 BARS WHERE NEW PAVEMENT ABUTS EXISTING FLEXIBLE PAVEMENT.