

F.A.U. ROUTE	SECTION	COUNTY	TOTAL SHEETS	SHEET NUMBER
9415	02-00055-00-RP	RANDOLPH	35	6
CITY OF CHESTER	PROJECT NO. M-5014(008)			
CONTRACT NO. 97274		JOB NO. C98-304-06		
FEDERAL AID PROJECT				

GENERAL NOTES

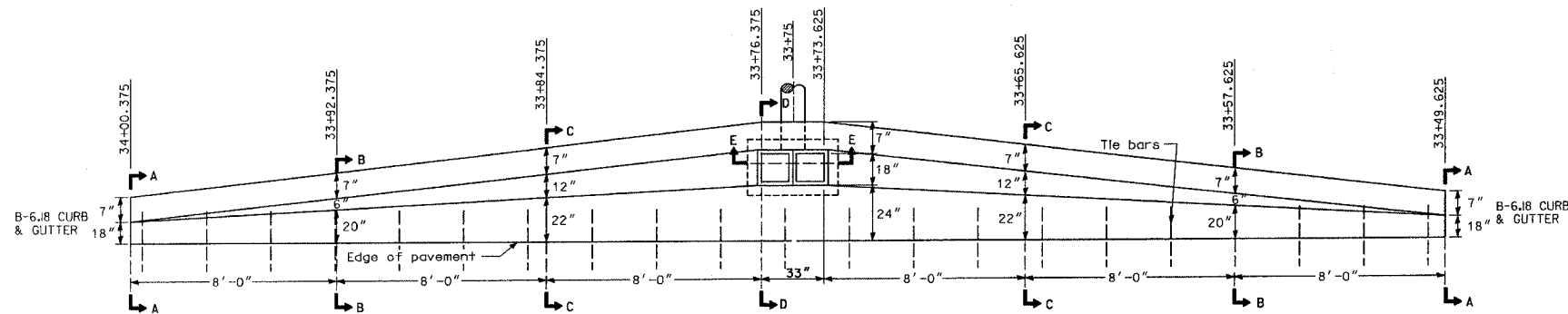
The gutter outlet shall be tied to the pavement in accordance with details for longitudinal construction joint shown on Standard 420001.

Tie bars shall be No. 6 at 24" centers unless otherwise shown.

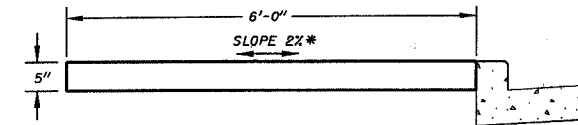
SEE CROSS SECTIONS AND SPECIAL PROVISIONS

QUANTITIES

Material	Double
Concrete - (cu. yd.)	3J
Cast Iron Grate - Ea. (82 lbs.)	2
Pipe Drain - Dia. (In.)	18" CMP

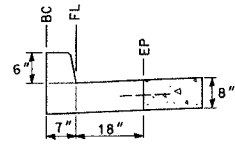


PLAN - DOUBLE OUTLET



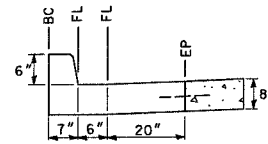
*SEE CROSS SECTIONS FOR DIRECTION OF SLOPE

DETAIL - P.C.C. SIDEWALK (5'')
NOT TO SCALE



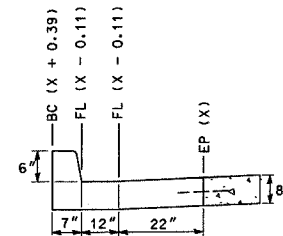
STA. 33+49.625 BC - 384.41
& FL - 383.91
STA. 34+00.375 EP - 384.09

SECTION A-A



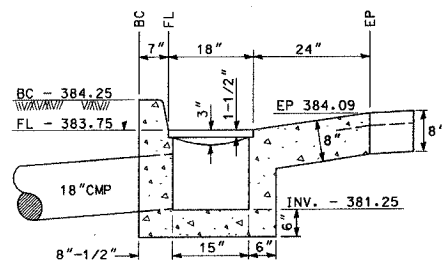
STA. 33+57.625 BC - 384.36
& FL - 383.86
STA. 33+92.375 EP - 384.09

SECTION B-B



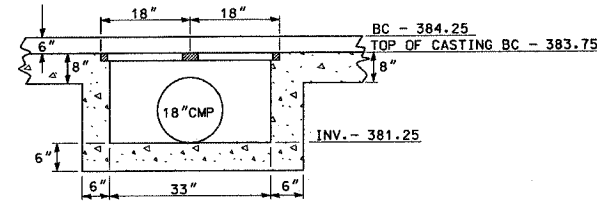
STA. 33+65.625 BC - 384.31
& FL - 383.81
STA. 33+84.375 EP - 384.09

SECTION C-C

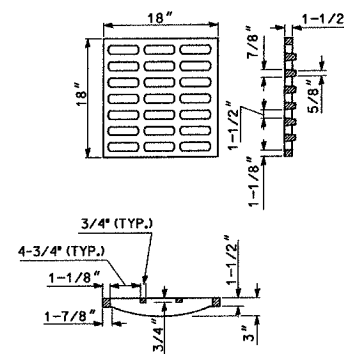


STA. 33+73.625 TO STA. 33+76.375

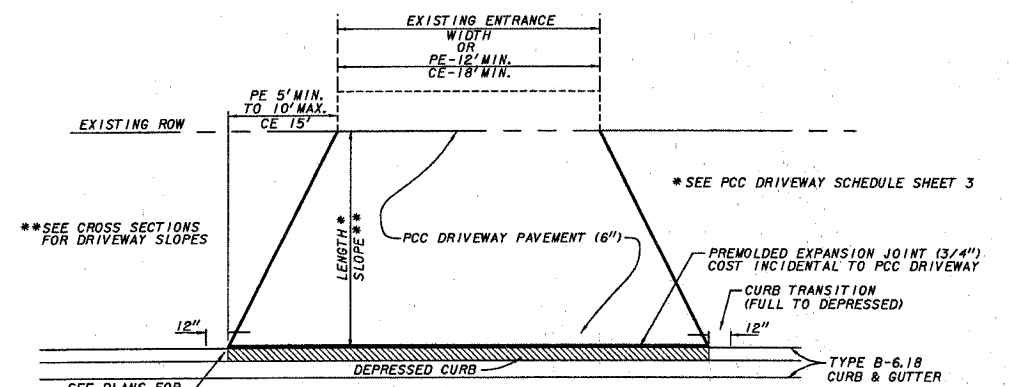
SECTION D-D



SECTION E-E



**NEENAH (INVENTORY #00001264)
GRATE TYPE B**



DETAIL OF P.C.C. DRIVEWAY PAVEMENT, 6 INCH
NOT TO SCALE

DOUBLE GUTTER OUTLET, SPECIAL - DETAIL
NOT TO SCALE

CITY OF CHESTER RANDOLPH COUNTY, ILLINOIS IMPROVEMENT TO BUENA VISTA STREET MISCELLANEOUS DETAILS
--

REVISED 03/15/07