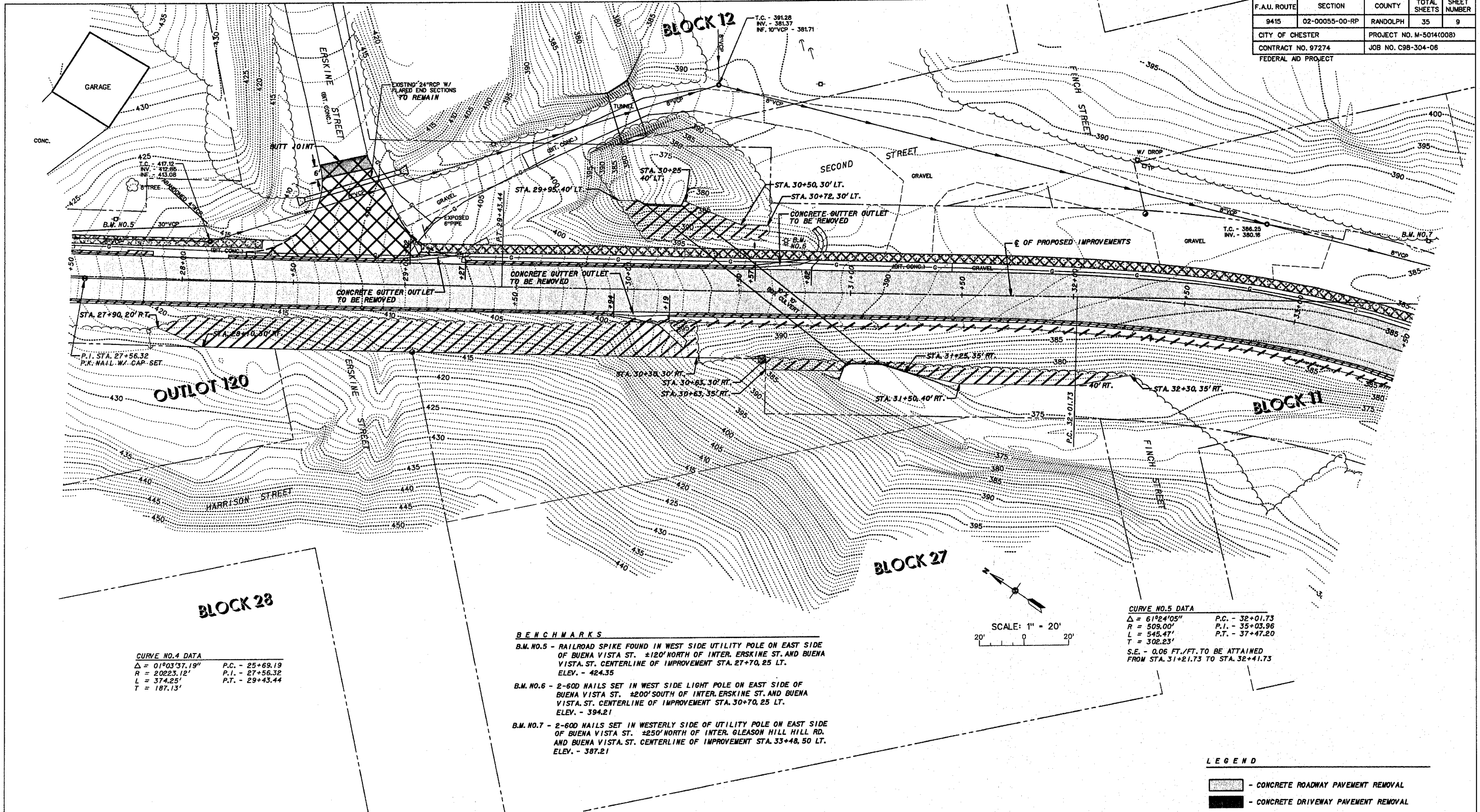


F.A.U. ROUTE	SECTION	COUNTY	TOTAL SHEETS	SHEET NUMBER
9415	02-00055-00-RP	RANDOLPH	35	9
CITY OF CHESTER		PROJECT NO. M-5014(008)		
CONTRACT NO. 97274		JOB NO. C98-304-06		
FEDERAL AID PROJECT				



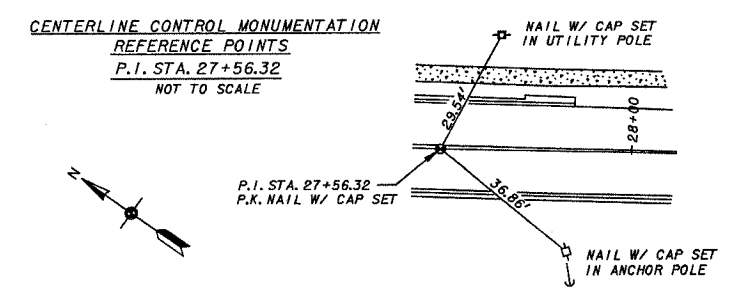
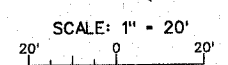
**CURVE NO. 4 DATA**

$\Delta = 01^{\circ}03'37.19''$	P.C. - 25+69.19
$R = 20223.12'$	P.I. - 27+56.32
$L = 374.25'$	P.T. - 29+43.44
$T = 187.13'$	

- BENCHMARKS**
- B.M. NO. 5 - RAILROAD SPIKE FOUND IN WEST SIDE UTILITY POLE ON EAST SIDE OF BUENA VISTA ST.  $\pm 120'$  NORTH OF INTER. ERSKINE ST. AND BUENA VISTA ST. CENTERLINE OF IMPROVEMENT STA. 27+70, 25 LT. ELEV. - 424.35
  - B.M. NO. 6 - 2-600 NAILS SET IN WEST SIDE LIGHT POLE ON EAST SIDE OF BUENA VISTA ST.  $\pm 200'$  SOUTH OF INTER. ERSKINE ST. AND BUENA VISTA ST. CENTERLINE OF IMPROVEMENT STA. 30+70, 25 LT. ELEV. - 394.21
  - B.M. NO. 7 - 2-600 NAILS SET IN WESTERLY SIDE OF UTILITY POLE ON EAST SIDE OF BUENA VISTA ST.  $\pm 250'$  NORTH OF INTER. GLEASON HILL HILL RD. AND BUENA VISTA ST. CENTERLINE OF IMPROVEMENT STA. 33+48, 50 LT. ELEV. - 387.21

**CURVE NO. 5 DATA**

$\Delta = 61^{\circ}24'05''$	P.C. - 32+01.73
$R = 508.00'$	P.I. - 35+03.96
$L = 545.47'$	P.T. - 37+47.20
$T = 302.23'$	
S.E. - 0.06 FT./FT. TO BE ATTAINED FROM STA. 31+21.73 TO STA. 32+41.73	



- LEGEND**
- |    |                          |      |                                  |
|----|--------------------------|------|----------------------------------|
| ⊕  | POWER POLE               | ---  | RIGHT-OF-WAY LINE                |
| ⊖  | POWER / TELEPHONE POLE   | ---  | PROPERTY LINE                    |
| ⊙  | TELEPHONE POLE           | ---  | GUARDRAIL                        |
| ⊕  | SANITARY SEWER & MANHOLE | ---  | TREE LINE                        |
| FH | FIRE HYDRANT             | ---  | FENCE LINE                       |
| WV | WATER VALVE              | ⊕    | CONC. R.O.W. MARKER              |
| WM | WATER METER              | ⊕    | REINFORCED CONCRETE PIPE CULVERT |
| W  | WATER LINE               | ⊕    | CORRUGATED METAL PIPE CULVERT    |
| G  | GAS LINE                 | TC   | TOP OF CASTING                   |
| GV | GAS VALVE                | INV. | INVERT                           |
| GM | GAS METER                | FL   | FLOWLINE                         |
| +  | SIGN                     | FLG  | CURB FLAG                        |
| MB | MAILBOX                  | BC   | BACK OF CURB                     |

- LEGEND**
- [Hatched Box] - CONCRETE ROADWAY PAVEMENT REMOVAL
  - [Hatched Box] - CONCRETE DRIVEWAY PAVEMENT REMOVAL
  - [Hatched Box] - PREPARATION OF BASE
  - [Hatched Box] - HOT-MIX ASPHALT SURFACE REMOVAL (BUTT JOINT)
  - [Hatched Box] - CONCRETE CURB & GUTTER REMOVAL
  - [Hatched Box] - PCC SIDEWALK REMOVAL
  - [Hatched Box] - SMALL TREES/BRUSH REMOVAL
  - [Hatched Box] - GUARDRAIL REMOVAL

CITY OF CHESTER  
RANDOLPH COUNTY, ILLINOIS  
IMPROVEMENT TO BUENA VISTA STREET  
EXISTING SITE PLAN, REMOVAL PLAN & CENTERLINE CONTROL MONUMENTATION - STA. 27+50 TO STA. 33+50