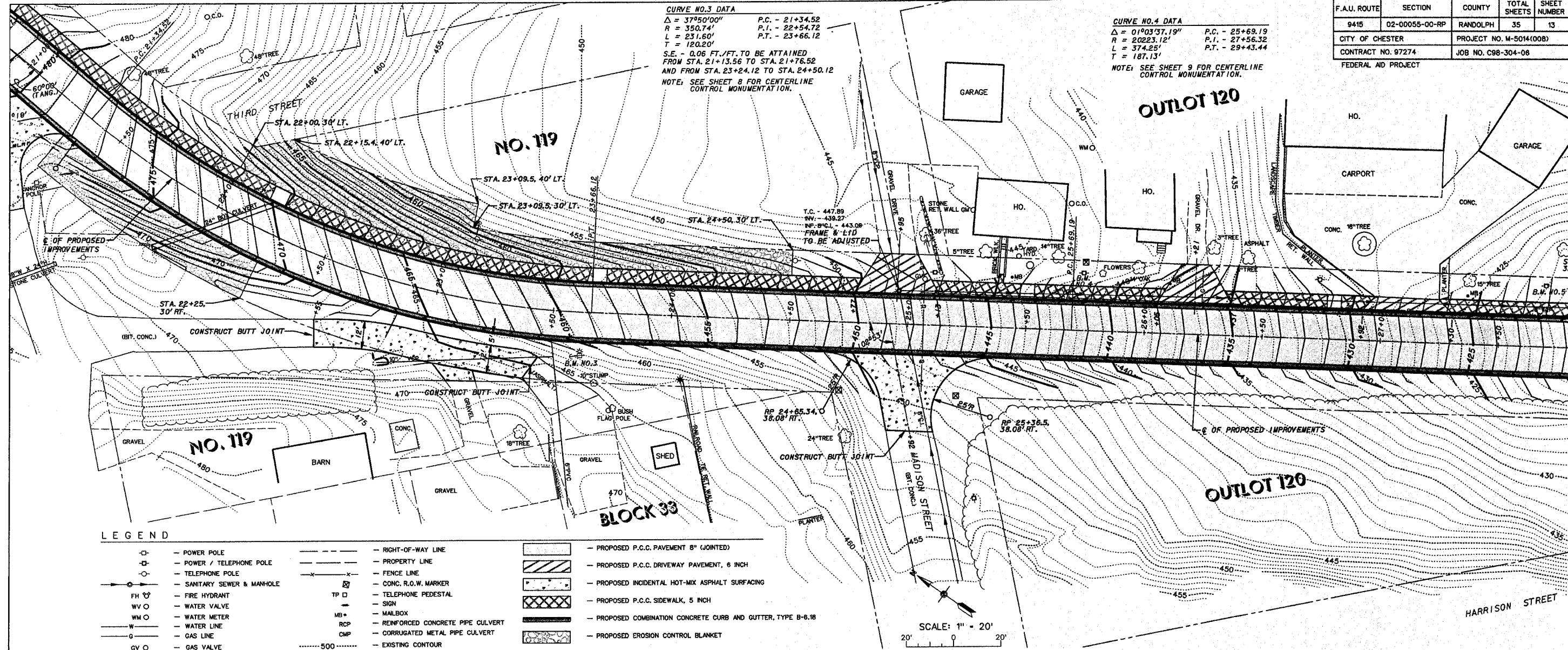


F.A.U. ROUTE	SECTION	COUNTY	TOTAL SHEETS	SHEET NUMBER
9415	02-00055-00-RP	RANDOLPH	35	13
CITY OF CHESTER		PROJECT NO. M-5014(00B)		
CONTRACT NO. 97274		JOB NO. C98-304-06		
FEDERAL AID PROJECT				

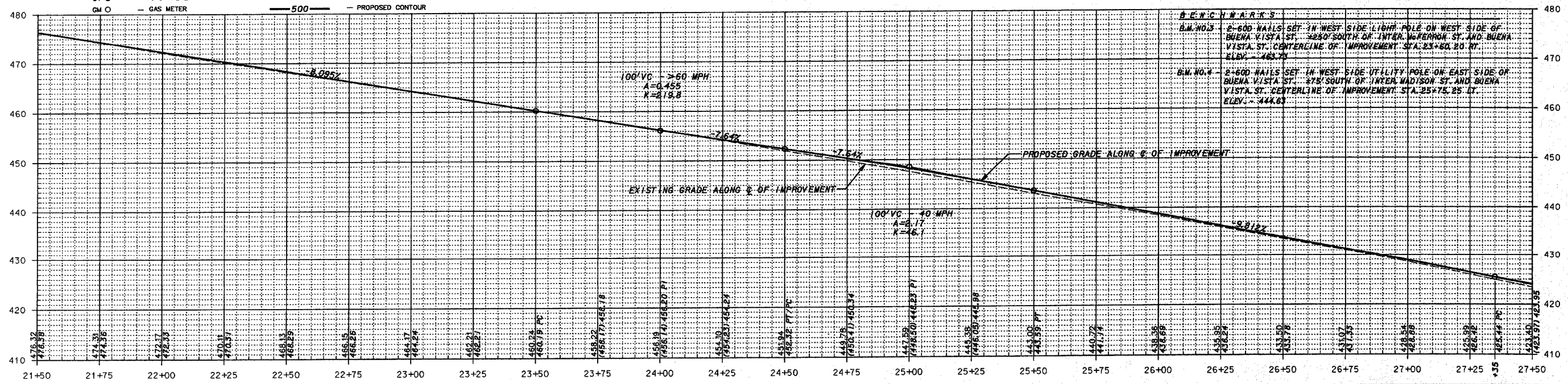
**CURVE NO.3 DATA**  
 $\Delta = 37^{\circ}50'00''$  P.C. - 21+34.52  
 $R = 350.74'$  P.I. - 22+54.72  
 $L = 231.60'$  P.T. - 23+66.12  
 $T = 120.20'$   
 S.E. - 0.06 FT./FT. TO BE ATTAINED FROM STA. 21+13.56 TO STA. 21+76.52 AND FROM STA. 23+24.12 TO STA. 24+50.12  
 NOTE: SEE SHEET 8 FOR CENTERLINE CONTROL MONUMENTATION.

**CURVE NO.4 DATA**  
 $\Delta = 01^{\circ}03'37.19''$  P.C. - 25+69.19  
 $R = 2023.12'$  P.I. - 27+56.32  
 $L = 374.25'$  P.T. - 29+43.44  
 $T = 187.13'$   
 NOTE: SEE SHEET 9 FOR CENTERLINE CONTROL MONUMENTATION.



**LEGEND**

	POWER POLE		RIGHT-OF-WAY LINE		PROPOSED P.C.C. PAVEMENT 8" (JOINTED)
	POWER / TELEPHONE POLE		PROPERTY LINE		PROPOSED P.C.C. DRIVEWAY PAVEMENT, 6 INCH
	TELEPHONE POLE		FENCE LINE		PROPOSED INCIDENTAL HOT-MIX ASPHALT SURFACING
	SANITARY SEWER & MANHOLE		CONC. R.O.W. MARKER		PROPOSED P.C.C. SIDEWALK, 5 INCH
	FIRE HYDRANT		TELEPHONE PEDESTAL		PROPOSED COMBINATION CONCRETE CURB AND GUTTER, TYPE B-6.18
	WATER VALVE		SIGN		PROPOSED EROSION CONTROL BLANKET
	WATER METER		MAILBOX		
	WATER LINE		REINFORCED CONCRETE PIPE CULVERT		
	GAS LINE		CORRUGATED METAL PIPE CULVERT		
	GAS VALVE		EXISTING CONTOUR		
	GAS METER		PROPOSED CONTOUR		



**NOTE TO CONTRACTOR**  
 SEE CROSS SECTIONS FOR PROPOSED ELEVATIONS OF ROADWAY, CURB & GUTTERS, DRIVEWAYS AND SIDEWALKS.