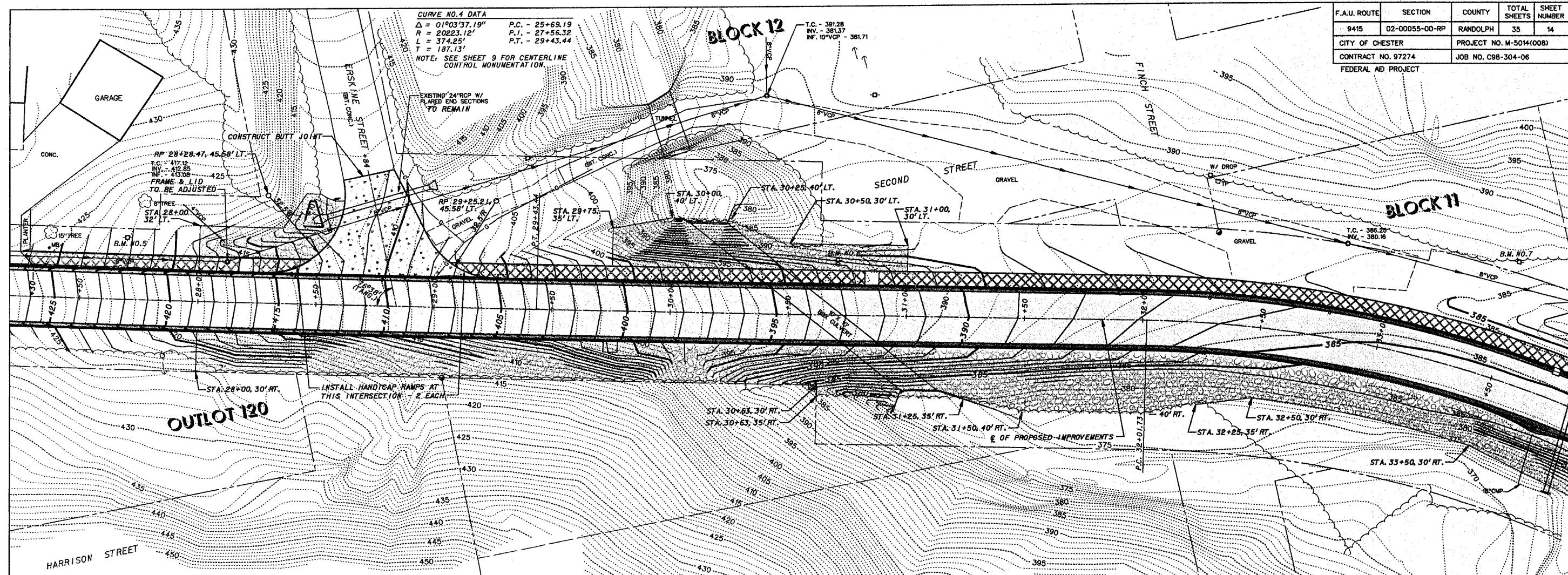


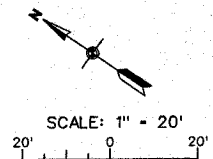
F.A.U. ROUTE	SECTION	COUNTY	TOTAL SHEETS	SHEET NUMBER
9415	02-00055-00-RP	RANDOLPH	35	14
CITY OF CHESTER		PROJECT NO. M-5014(00B)		
CONTRACT NO. 97274		JOB NO. C98-304-06		
FEDERAL AID PROJECT				



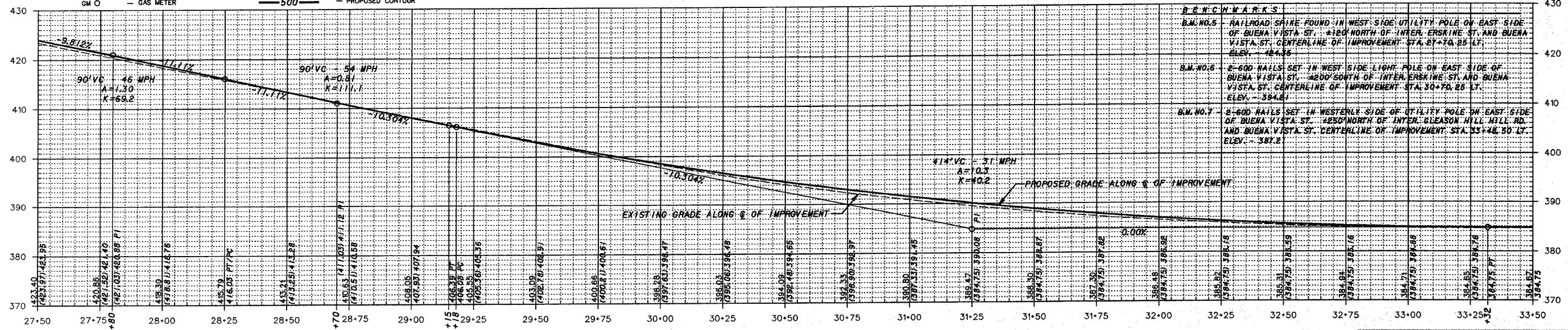
**LEGEND**

- POWER POLE
- POWER / TELEPHONE POLE
- TELEPHONE POLE
- SANITARY SEWER & MANHOLE
- FH — FIRE HYDRANT
- WV — WATER VALVE
- WM — WATER METER
- WATER LINE
- GAS LINE
- GV — GAS VALVE
- GM — GAS METER
- RIGHT-OF-WAY LINE
- PROPERTY LINE
- FENCE LINE
- CONC. R.O.W. MARKER
- TELEPHONE PEDESTAL
- SIGN
- MB — MAILBOX
- RCP — REINFORCED CONCRETE PIPE CULVERT
- CMP — CORRUGATED METAL PIPE CULVERT
- EXISTING CONTOUR
- PROPOSED CONTOUR
- PROPOSED P.C.C. PAVEMENT, 8" (JOINTED)
- PROPOSED P.C.C. DRIVEWAY PAVEMENT, 6 INCH
- PROPOSED INCIDENTAL HOT-MIX ASPHALT SURFACING
- PROPOSED P.C.C. SIDEWALK, 5 INCH
- PROPOSED COMBINATION CONCRETE CURB AND GUTTER, TYPE B-6.1B
- PROPOSED EROSION CONTROL BLANKET

**BLOCK 27**



**CURVE NO. 5 DATA**  
 $\Delta = 61^{\circ}24'05''$  P.C. - 32+01.73  
 $R = 509.00'$  P.I. - 35+03.96  
 $L = 545.47'$  P.T. - 37+47.20  
 $T = 302.23'$   
 S.E. - 0.06 FT./FT. TO BE ATTAINED  
 FROM STA. 31+21.73 TO STA. 32+41.73  
 NOTE: SEE SHEET 10 FOR CENTERLINE CONTROL MONUMENTATION.



**NOTE TO CONTRACTOR**  
 SEE CROSS SECTIONS FOR PROPOSED ELEVATIONS OF ROADWAY, CURB & GUTTERS, DRIVEWAYS AND SIDEWALKS.

CITY OF CHESTER  
 RANDOLPH COUNTY, ILLINOIS  
 IMPROVEMENT TO BUENA VISTA STREET  
 PLAN AND PROFILE STA. 27+50 TO STA. 33+50