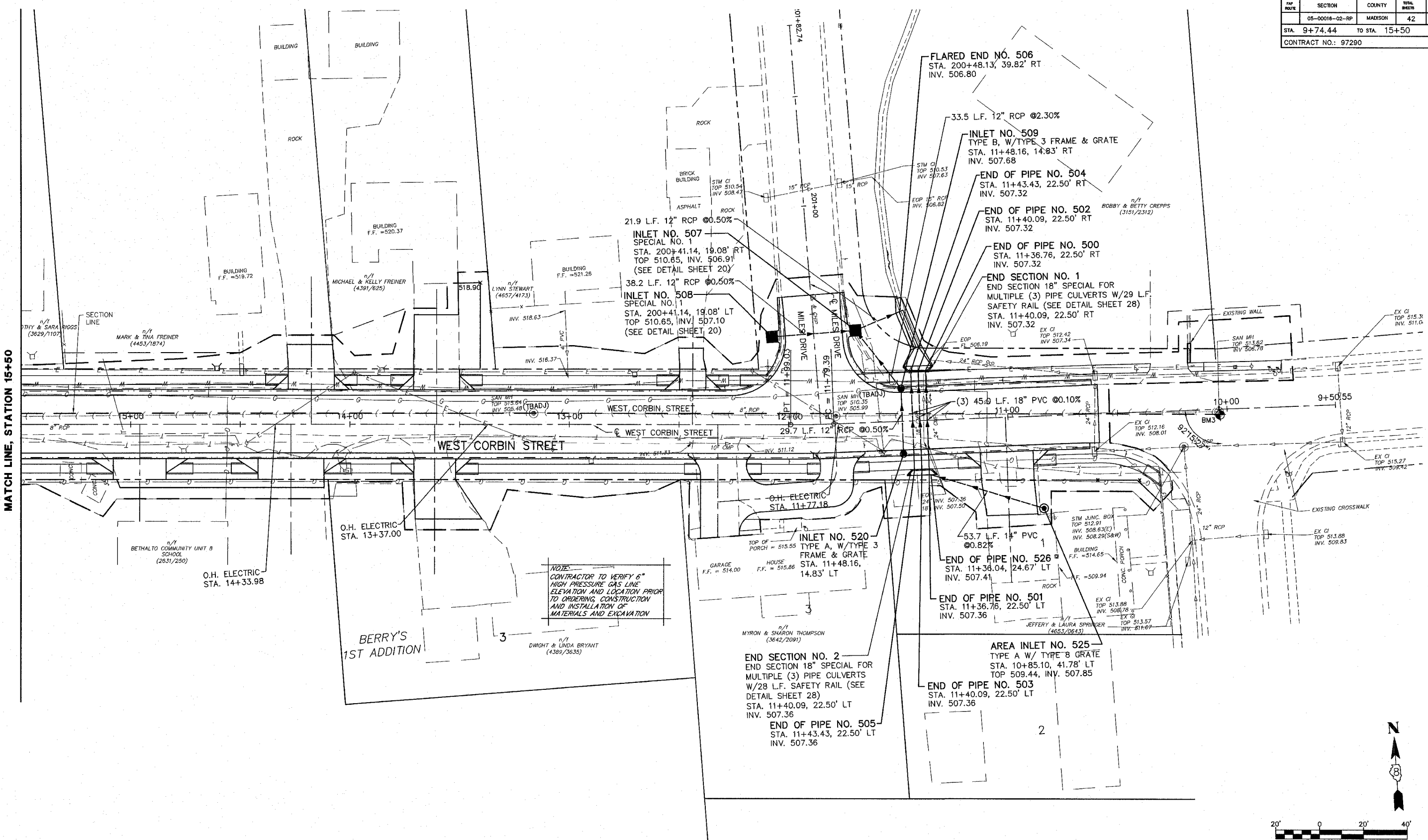


| FAP ROUTE           | SECTION        | COUNTY        | TOTAL SHEETS | SHEET NO. |
|---------------------|----------------|---------------|--------------|-----------|
|                     | 05-00016-02-RP | MADISON       | 42           | 21        |
| STA. 9+74.44        |                | TO STA. 15+50 |              |           |
| CONTRACT NO.: 97290 |                |               |              |           |

MATCH LINE, STATION 15+50



**NOTE:**  
CONTRACTOR TO VERIFY 6" HIGH PRESSURE GAS LINE ELEVATION AND LOCATION PRIOR TO ORDERING, CONSTRUCTION AND INSTALLATION OF MATERIALS AND EXCAVATION

- NOTES:**
- SEE SCHEDULE SHEET 9 FOR STORM SEWER AND CULVERT REMOVAL
  - ALL UTILITY RELOCATION TO BE PERFORMED BY OTHERS.
  - CULVERT PIPES ARE 90° TO CENTER OF ROAD UNLESS OTHERWISE NOTED.

| REVISIONS |      |
|-----------|------|
| NAME      | DATE |
|           |      |
|           |      |
|           |      |
|           |      |

ILLINOIS DEPARTMENT OF TRANSPORTATION

**DRAINAGE AND UTILITIES PLAN**

FAP ROUTE  
SECTION 05-00016-02-RP  
COUNTY MADISON

DRAWN BY: R.A.W.

