

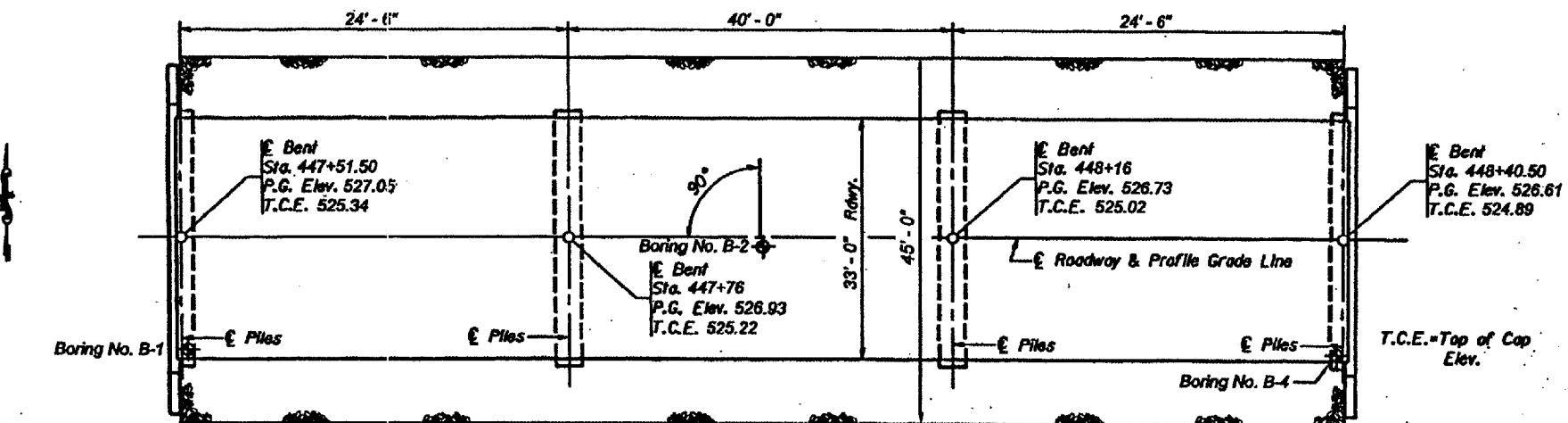
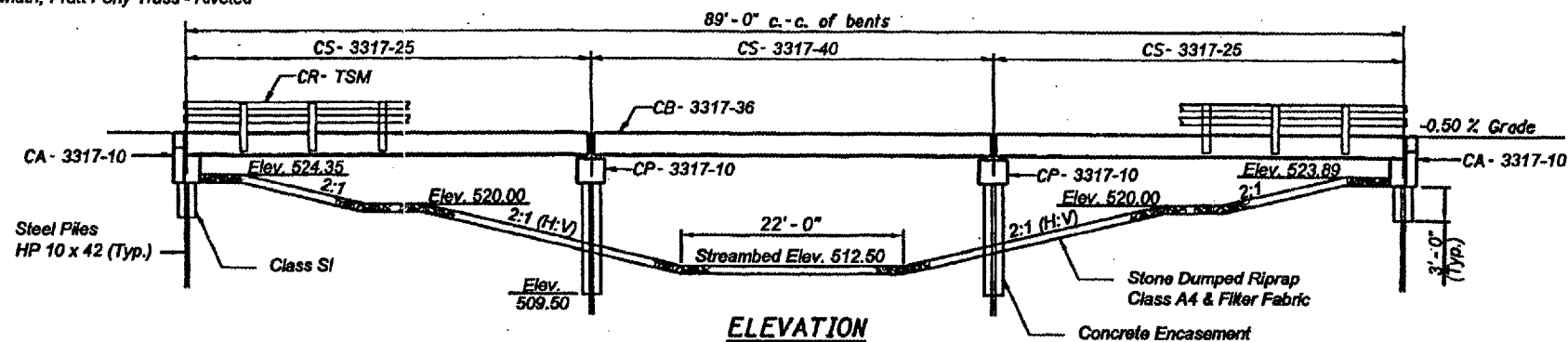
B.M. - On S.E. Headwall Corner of Existing Structure Elev 525.51

Existing Structure - S.N. 060-3045, Built in 1954, 4 Panels @ 70'-0" c. to c. end bearings, 20'-0" o. to o. width, Pratt Pony Truss - Riveted

Salvage - None

RTE NO.	SECTION	COUNTY	TOTAL SHEETS	SHEET NO.
FAS 786	04-00176-00-BR	MADISON	26	8

CONTRACT NO. 97296

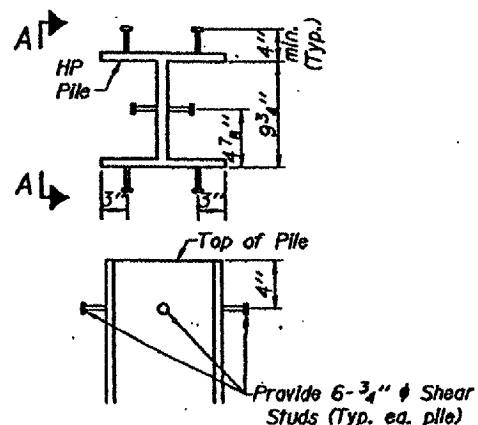


GENERAL NOTES

1. The steel H-Piles shall be according to AASHTO M270 Grade 50.
2. The Test Pile(s) shall be driven to 110 percent of the nominal required bearing indicated in the pile data information.
3. See Special Provisions for boring logs.

TOTAL BILL OF MATERIAL

Item	Unit	Super	Sub.		Total
			Piers	Abuts.	
Removal of Existing Structures	Each	1		2	1
Hot Mix Asphalt	Ton	56			56
Waterproofing Membrane System	Sq. Yd.	330.1			330.1
Concrete Structures	Cu. Yd.		20.4	22	42.4
Precast Prestressed Concrete Deck Beams (17" Depth)	Sq. Ft.	2970			2970
Steel Railing, Type SM	Foot	180			180
Reinforcement Bars	Pound		2460	2860	5320
Furnishing Steel Piles HP 10x42	Foot		558	682	1240
Driving Piles	Foot		558	682	1240
Test Piles Steel HP 10x42	Each		1	1	2
Name Plates	Each			1	1
Concrete Encasement	Cu. Yd.		14.3	4.2	18.5
Portland Cement Mortar Fairing Course	Foot	900			900



Provide 3/4" ϕ granular or solid flux filled headed studs conforming to article 1006.32 of the standard specifications automatically end welded to piling. Cost shall be incidental to the cost of furnishing piles.

DESIGN SPECIFICATIONS

2002 AASHTO Standard Specifications - 17th ed.

LOADING HS20-44

Allow 25#/sq. ft. for future wearing surface.

SEISMIC DATA

Seismic Performance Category (SPC) = A
 Bedrock Acceleration Coefficient (A) = 0.09
 Site Coefficient (S) = 1.5

PILE DATA (2-PIERS)

Pile Type & Size: HP 10 x 42
 Nominal Required Bearing: 135 Tons
 Allowable Resistance Available: 45 Tons
 Estimated Pile Length: 62 Feet
 Number of Production Piles: 9
 Number of Test Piles: 1

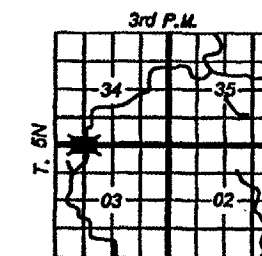
PILE DATA (2-ABUTS.)

Pile Type & Size: HP 10 x 42
 Nominal Required Bearing: 75 Tons
 Allowable Resistance Available: 25 Tons
 Estimated Pile Length: 62 Feet
 Number of Production Piles: 11
 Number of Test Piles: 1

STATION 447+96
 SUGAR FORK CREEK
 SEC. 04-00176-00-BR BUILT 2007
 ROAD DIST. 08
 MADISON COUNTY
 LOADING HS20
 STR. NO. 060-3343

LETTERING FOR NAME PLATE

Locate Name Plate at Southwest Corner of Bridge (See Std. CN)



WATERWAY INFORMATION

Drainage Area = 9.35 Sq Mi Low Grade Elev. = 512.50 @ Sta. 447+96

Flood Yr.	Freq. C.F.S.	Opening Sq. Ft.		Nat. H.W.E.	Head - Ft.		Headwater El.	
		Exist.	Prop.		Exist.	Prop.	Exist.	Prop.
Design	20	1922	441	431	523.12		523.42	523.12
Base	100	2828	481	490	523.95	0.49	524.39	523.95
Overlapping Max. Calc.	500	3697		560				

INDEX OF SHEETS

1. General Plan & Elevation
2. Standard CS-3317-25
3. Standard CS-3317-40
4. Standard CB-3317-36
5. Standard CA-3317-10
6. Standard CP-3317-10
7. Standard CR-TSM
8. Standard CN
9. Standard CX-1

GENERAL PLAN & ELEVATION

ROUTE _____
 OVER SUGAR FORK CREEK
 SECTION 04-00176-00-BR
 MADISON COUNTY
 STATION 447+96