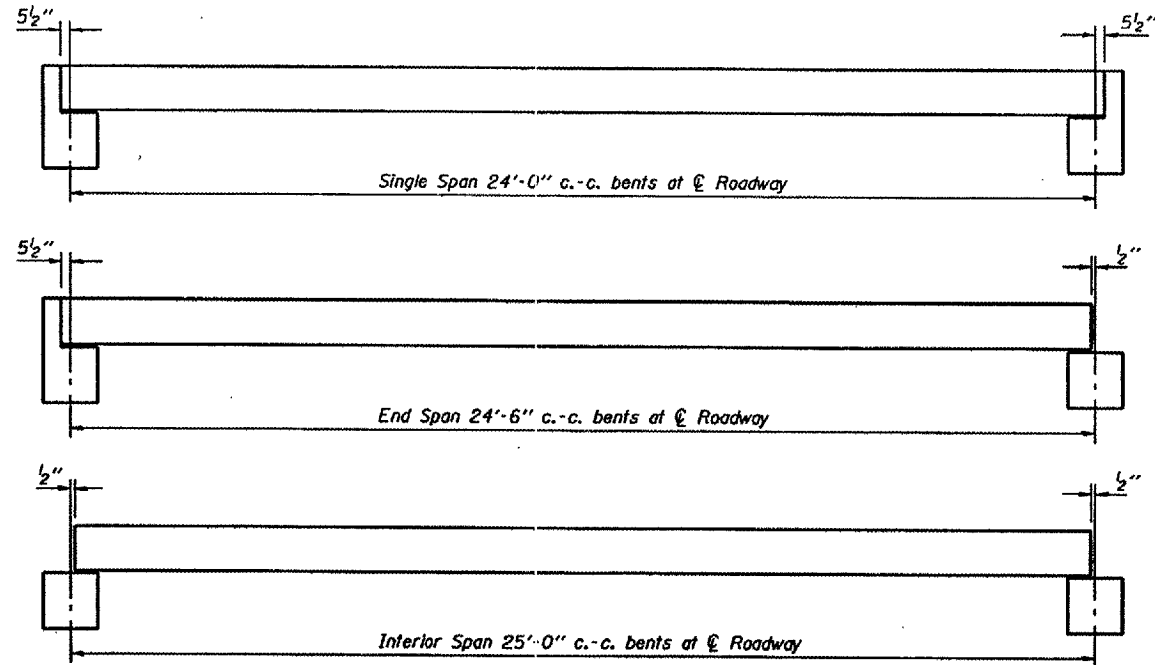
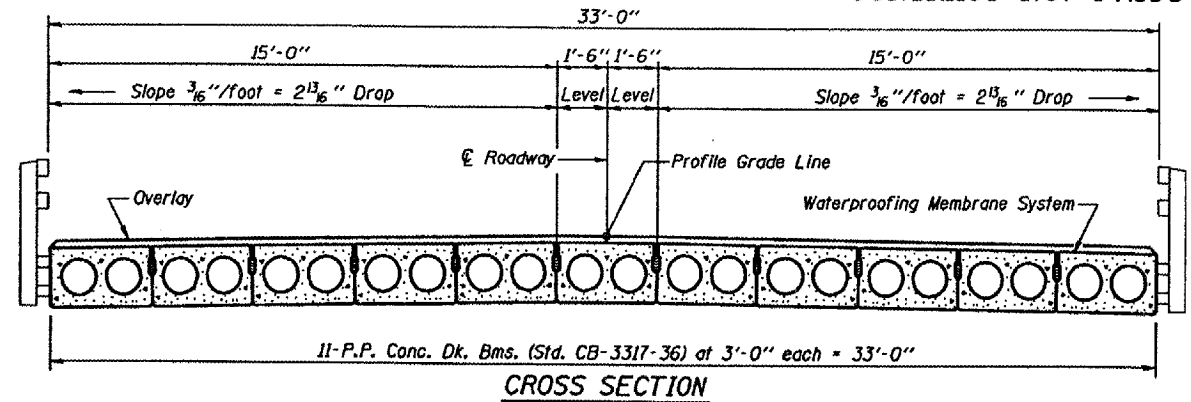


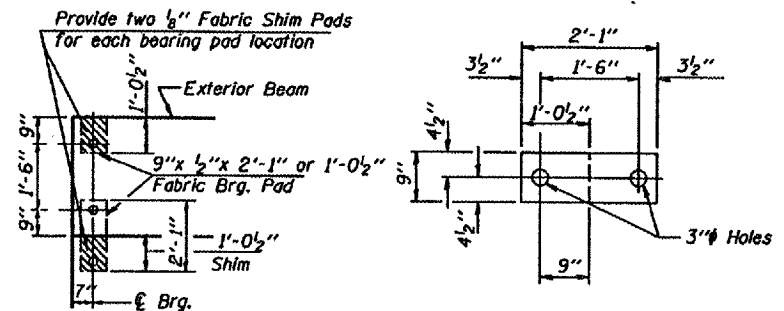
CONTRACT NO. 97296



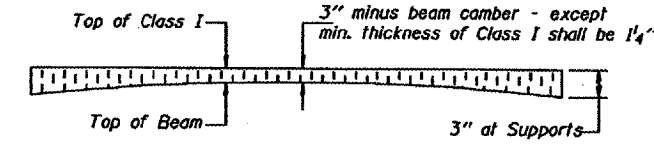
TYPICAL ELEVATIONS



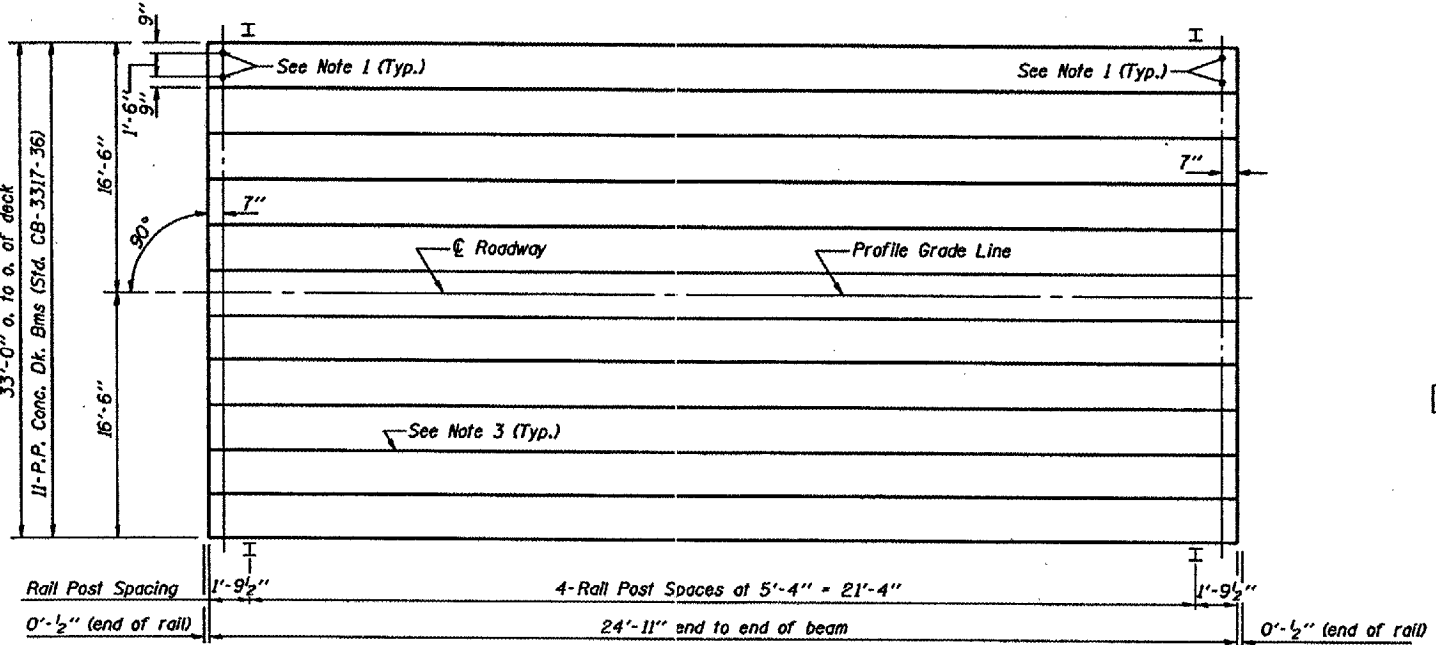
CROSS SECTION



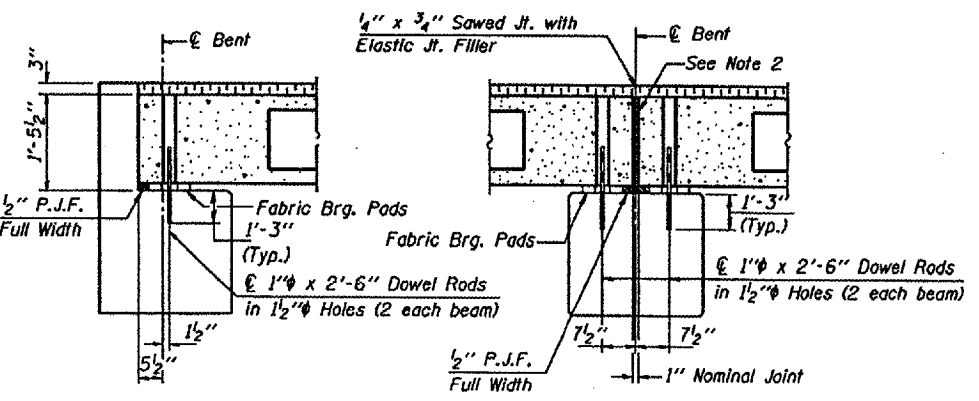
1/2" FABRIC BRG. PAD DETAILS



PROFILE OF OVERLAY



PLAN



SECTION AT ABUTS.
(Along â Beams)

SECTION AT PIERS
(Along â Beams)

NOTES

1. After beams have been erected, holes shall be drilled into substructure and anchor dowels placed. Dowel holes shall be filled with non-shrink grout to top of beam and allowed to cure min. 24 hrs. prior to grouting the shear keys.
2. Nominal 1" joint at â Pier shall be filled with non-shrink grout.
3. Longitudinal keys shall be grouted.

QUANTITIES FOR ONE SPAN

P.P. Conc. Dk. Bm. 17" Dp.	825 Sq. Ft.
Steel Rolling	50 Ft.
Waterproofing Membrane System	91.7 Sq. Yds.
Portland Cement Mortar	250 Ft.
Fairing Course	

Note: Quantity of overlay for one span = 14.9 Tons

P.P.C. DECK BEAM SUPERSTRUCTURE			
33' RDWY.	17" BMS.	25' SPAN	0° SKEW
STANDARD CS-3317-25			

Illinois Department of Transportation

PASSED APRIL 4, 2005

Theresa J. [Signature]

Engineer of Bridge Design

APPROVED APRIL 4, 2005

Ralph E. [Signature]

Engineer of Bridges and Structures