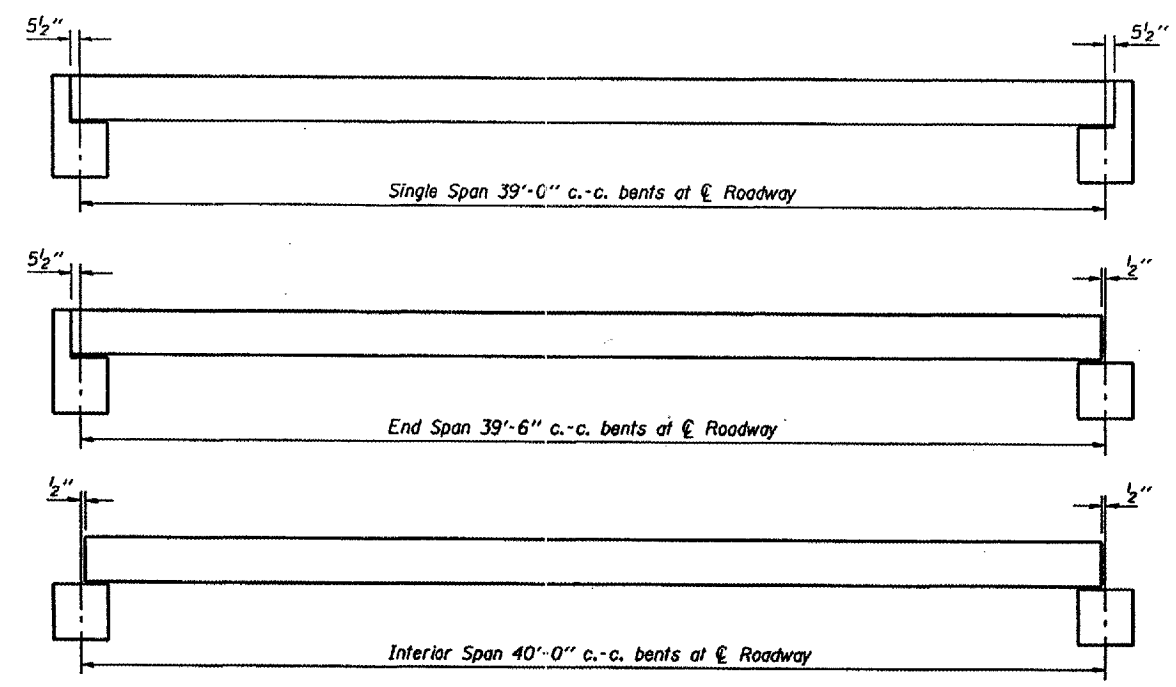
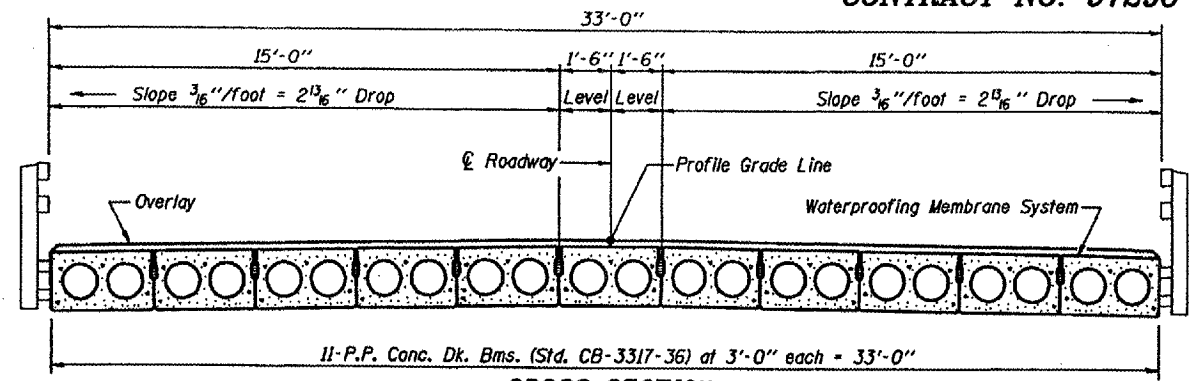


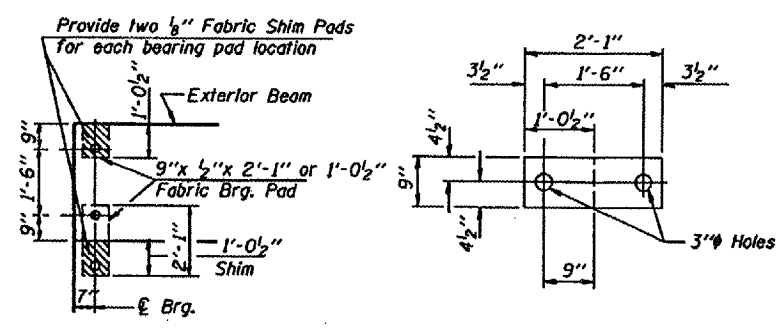
CONTRACT NO. 97296



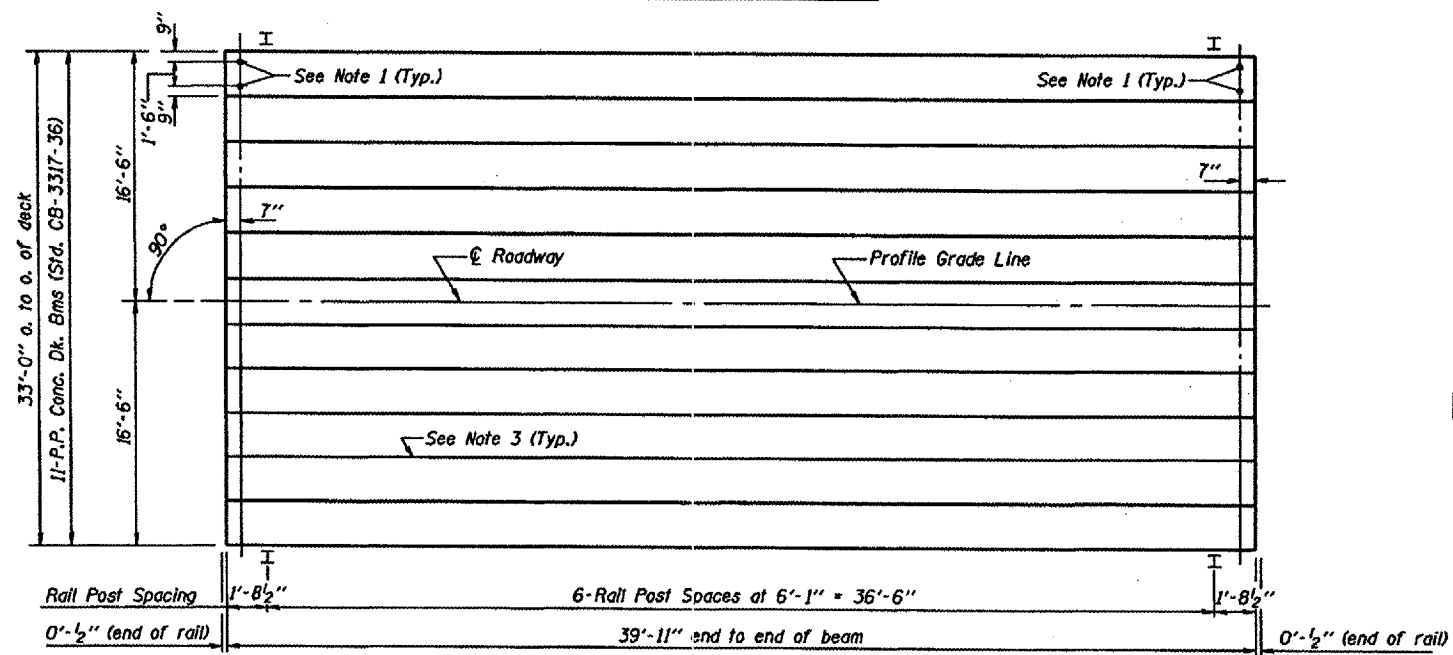
TYPICAL ELEVATIONS



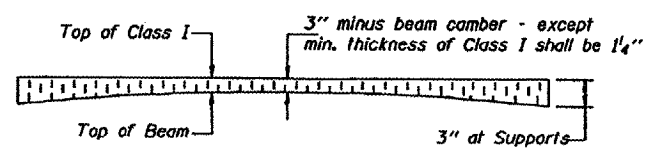
CROSS SECTION



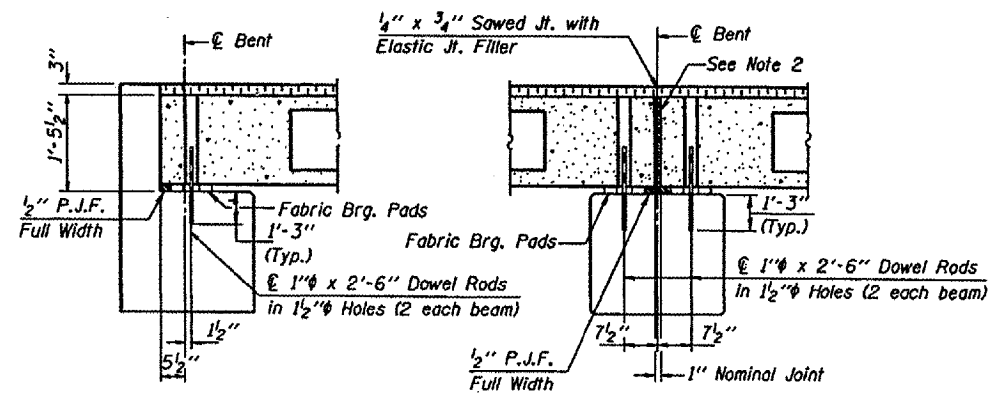
1/2" FABRIC BRG. PAD DETAILS



PLAN



PROFILE OF OVERLAY



SECTION AT ABUTS. (Along centerline Beams)

SECTION AT PIERS (Along centerline Beams)

NOTES

1. After beams have been erected, holes shall be drilled into substructure and anchor dowels placed. Dowel holes shall be filled with non-shrink grout to top of beam and allowed to cure min. 24 hrs. prior to grouting the shear keys.
2. Nominal 1" joint at centerline Pier shall be filled with non-shrink grout.
3. Longitudinal keys shall be grouted.

QUANTITIES FOR ONE SPAN

| | |
|-------------------------------|----------------|
| P.P. Conc. Dk. Bm. 17" Dp. | 1320 Sq. Ft. |
| Steel Railing | 80 Ft. |
| Waterproofing Membrane System | 146.7 Sq. Yds. |
| Portland Cement Mortar | 400 Ft. |
| Fairing Course | |

Note: Quantity of overlay for one span = 20.6 Tons

| | | | |
|---------------------------------|----------|----------|---------|
| P.P.C. DECK BEAM SUPERSTRUCTURE | | | |
| 33' RDWY. | 17" BMS. | 40' SPAN | 0° SKEW |
| STANDARD CS-3317-40 | | | |

Illinois Department of Transportation

PASSED APRIL 4, 2005

Theresa J. Nemes

Engineer of Bridge Design

APPROVED APRIL 4, 2005

Robert E. Robinson

Engineer of Bridges and Structures