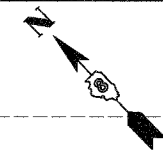
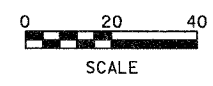
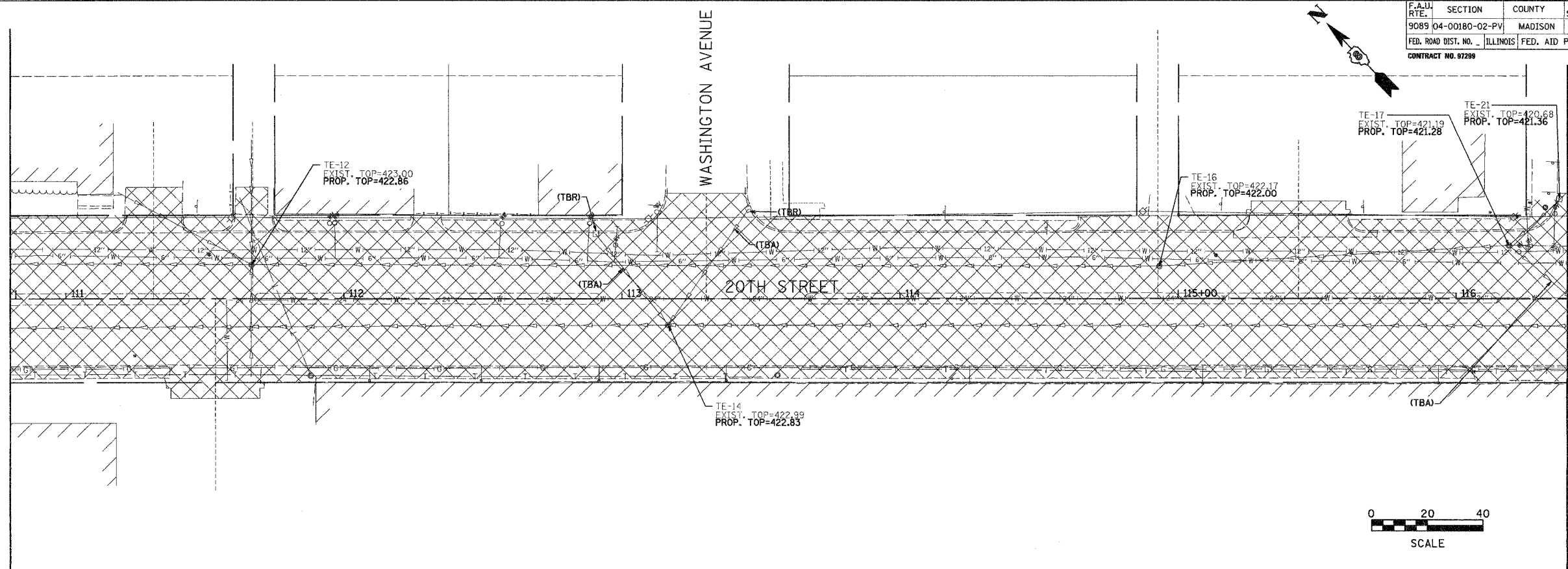


F.A.U. RTE.	SECTION	COUNTY	TOTAL SHEETS	SHEET NO.
9089 04-00180-02-PV		MADISON	92	64
FED. ROAD DIST. NO.	ILLINOIS FED. AID PROJECT			
			CONTRACT NO. 97299	



FINAL SURVEY	DATE
SURVEY PLOTTED	
NOTE BOOK TEMPLATE	
AREAS CHECKED	
AREAS CHECKED	
NO.	

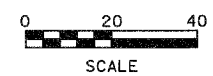
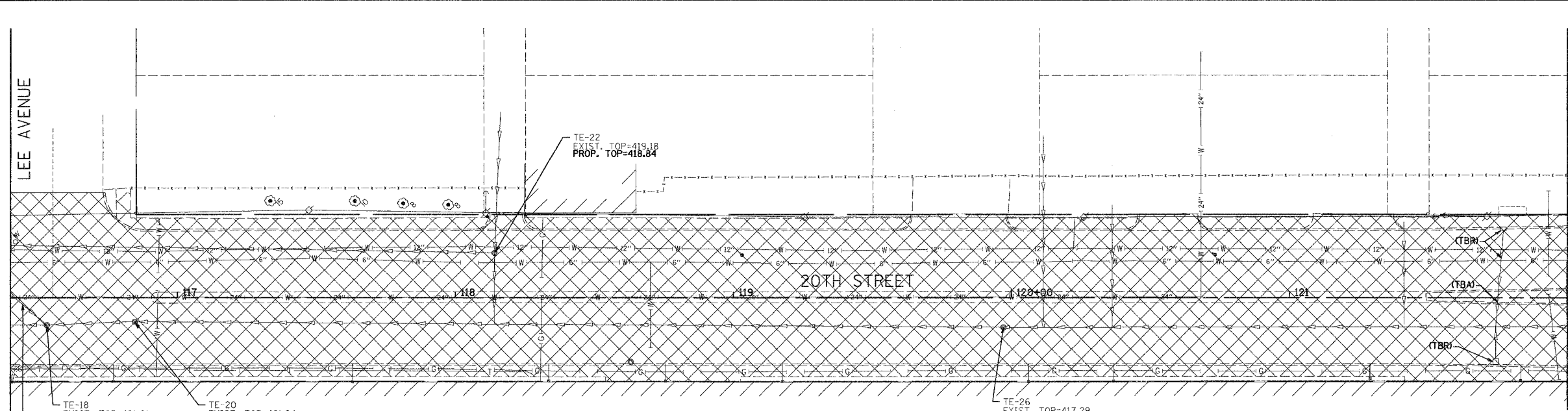
MATCH LINE STA. 110+80.00



MATCH LINE STA. 116+40.00

ORIGINAL SURVEY	DATE
SURVEY PLOTTED	
NOTE BOOK TEMPLATE	
AREAS CHECKED	
AREAS CHECKED	
NO.	

MATCH LINE STA. 116+40.00



MATCH LINE STA. 122+00.00

LEGEND
 REMOVAL
 (TBR) - TO BE REMOVED
 (TBA) - TO BE ABANDONED
 (TBR&RBO) - TO BE REMOVED AND REPLACED BY OTHERS

Juneau Associates, Inc. P.C.
 CONSULTING ENGINEERS AND LAND SURVEYORS
 2100 State Street, P.O. Box 1205
 Granite City, Illinois 62040
 Phone: (618) 877-4400 / (618) 482-0035
 Fax: (618) 878-2601

100 North Madison Drive
 Edwardsville, Illinois 62025
 Phone: (618) 668-9900 / (618) 495-0000
 Fax: (618) 668-2601

REMOVAL	
F.A.U. ROUTE 9089	
20TH STREET (PHASES II, III & IV)	
GRANITE CITY, ILLINOIS	
SECTION No. 04-00180-02-PV	
SCALE: 1 inch = 20 feet	
DSN. BY: BFK	DATE: 12/26/06
DWN. BY: DAN	DATE: 12/26/06
CHKD: BFK	DATE: 12/26/06
JOB NO. E030204	DGN. NAME: REM.02a
SHEET 64 OF 92 SHTS	

REVISIONS			
NO.	DATE	BY	REMARKS