

F.A. RTE.	SECTION	COUNTY	TOTAL SHEETS	SHEET NO.
*	**	WILLIAMSON	917	7
STA.		TO STA.		
FED. ROAD DIST. NO.		ILLINOIS FED. AID PROJECT		

- * FAI 57 & FAU 9629 (OLD IL 13)
- ** (X1-6-2)VB-2, (X1-6)HBK-2

SUMMARY OF QUANTITIES

		WILLIAMSON URBAN										
		F. A. I. 57 90% FEDERAL/ 10% STATE-ACIM					FAU 9629 (OLD IL 13)					
		ROADWAY	BRIDGE	BRIDGE	BRIDGE	BRIDGE	LIGHTING	SIGNALS	SIGNALS	ROADWAY	ROADWAY	
		STA 1500+00 TO STA 1556+85	100-0084 TO 100-0085	100-0086 TO 100-0087	100-0008 TO 100-0009	100-0005		SB I57 RAMP ACIM	VA & NB I57 RAMP	STA. 753+20 TO STA. 784+40 ACIM	STA. 753+20 TO STA. 784+40 ACIM	
		CONSTRUCTION TYPE CODE:	I000-2A	X271-2A	X171-5B	SFTY-2A	SFTY-2A	Y030-1E	Y031-1F	Y031-1F	I000-2A	I000-2A
CODE NUMBER	ITEM DESCRIPTION	UNIT	QUANTITY									
X0300203	CLEAN AND FILL EXPANSION JOINTS	EACH	8.0									8.0
X0300471	RUBBLIZING PORTLAND CEMENT CONCRETE PAVEMENT	SQ YD	17,159.0	17,159.0					1.0	1.0		
X0300737	RADIO TRANSCEIVER	EACH	2.0									
X0322066	PROTECTIVE SHIELD (PERMANENT)	SQ YD	878.0			878.0						
X0322662	TEMPORARY SIGNING	EACH	3.0	3.0								
X0322729	MATERIAL TRANSFER DEVICE	TON	2,362.0	2,362.0								
X0322879	GRADING AND SHAPING FORESLOPES	SQ YD	431.0	431.0								
X0323991	SURFACE MOUNT LANE SEPARATOR	FOOT	792.0								792.0	
51202305	DRIVING PILES	FOOT	8,079.0	2,739.0	5,340.0							
X6060500	CORRUGATED MEDIAN REMOVAL	SQ FT	34.0								34.0	
X6370940	CONCRETE BARRIER, DOUBLE FACE, 42 INCH HEIGHT	FOOT	3,116.0	3,116.0								
X7050169	TEMPORARY TRAFFIC BARRIER TERMINAL, TYPE 1 SPECIAL (FLARED)	EACH	1.0	1.0								
X7240205	REMOVE SIGN COMPLETE	EACH	21.0	17.0							4.0	
X7330105	OVERHEAD SIGN STRUCTURE WALKWAY, TYPE A	FOOT	57.0	57.0								
X7330110	OVERHEAD SIGN STRUCTURE WALKWAY, CANTILEVER, TYPE A	FOOT	14.0	14.0								6.6
X7340100	CONCRETE FOUNDATIONS, GROUND MOUNT	CU YD	24.4	17.8								
X8420220	REMOVE EXISTING HIGH MAST LIGHT TOWER	EACH	10.0					10.0				
X8420300	LIGHTING FOUNDATION REMOVAL, LIGHT TOWER	EACH	6.0					6.0				
XX003813	ELECTRIC CABLE IN CONDUIT, NO. 10 3/C	FOOT	1,529.0						497.0	1,032.0		
XX006661	UNINTERRUPTIBLE POWER SUPPLY	EACH	2.0						1.0	1.0		
Z0006000	BRIDGE DECK CONCRETE OVERLAY	SQ YD	2,007.0									
Z0006001	BRIDGE DECK HYDRO CONSTRUCTION 1/2"	SQ YD	1,950.0									
Z0016001	DECK SLAB REPAIR (FULL DEPTH, TYPE I)	SQ YD	115.1									
Z0016002	DECK SLAB REPAIR (FULL DEPTH, TYPE II)	SQ YD	300.0									
Z0016200	DECK SLAB REPAIR (PARTIAL)	SQ YD										
Z0017202	DOWEL BARS 1 1/2"	EACH	1,768.0									1,768.0

** HSIP FUNDING
90% FED. / 10% STATE
* SPECIALTY ITEMS

REVISIONS	
NAME	DATE

ILLINOIS DEPARTMENT OF TRANSPORTATION

SUMMARY OF QUANTITIES 1 OF 12

SCALE: VERT. HORIZ. DATE

DRAWN BY JCK
CHECKED BY

Rev. 4-10-07

Rev.

F.A. RTE.	SECTION	COUNTY	TOTAL SHEETS	SHEET NO.
*	**	WILLIAMSON	917	116
STA.		TO STA.		
FED. ROAD DIST. NO.		ILLINOIS FED. AID PROJECT		

* I-57, & OLD IL 13 (FAU 9629)
 ** (X1-6-2)VB-2,(X1-6)HBK-2

NOTES:

DECK PATCHING SURVEY WAS PERFORMED IN MARCH, 2007.

QUANTITIES SHOWN IN THE PLANS FOR PATCHING ARE ESTIMATES. THE RESIDENT ENGINEER WILL DETERMINE FINAL PATCH LOCATIONS AND QUANTITIES IN THE FIELD BEFORE BRIDGE DECK PATCHING OPERATIONS BEGIN.

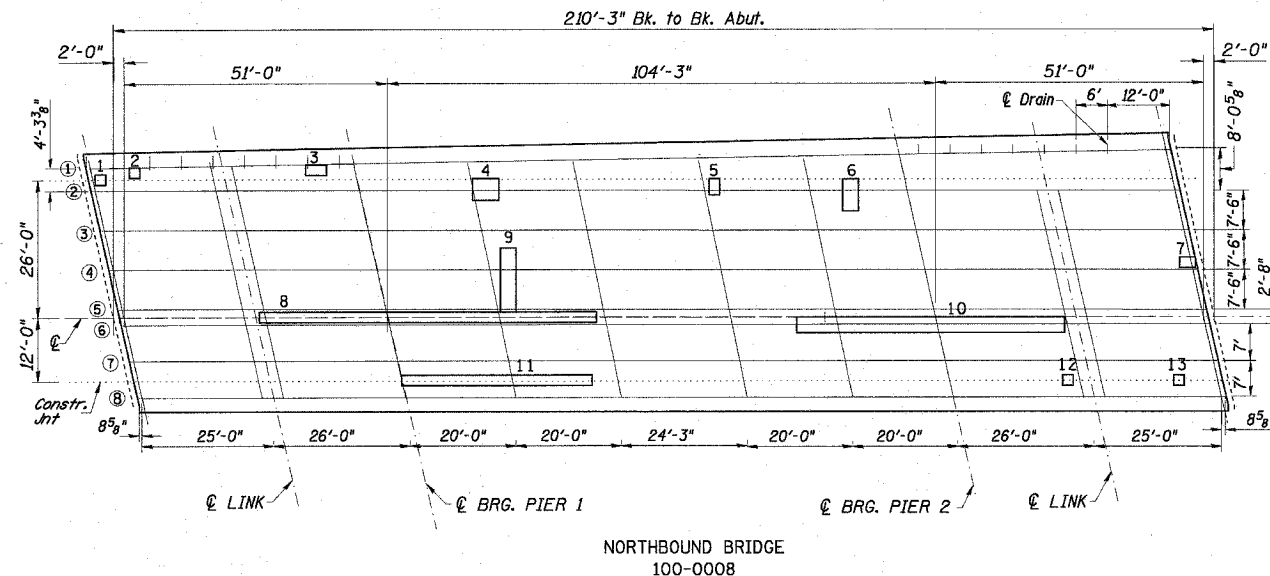
THE RESIDENT ENGINEER WILL MARK THE PLAN VIEW FOR THE DECK REPAIRS TO BE INCORPORATED IN THE AS BUILT PLANS.

EXISTING PROTECTIVE SHIELD SHALL BE REMOVED BY THE CONTRACTOR. THE MATERIAL SHALL BECOME THE PROPERTY OF THE CONTRACTOR. THIS WORK SHALL BE INCLUDED IN THE COST FOR PROTECTIVE SHIELD (PERMANENT).

THE PROTECTIVE SHIELD (PERMANENT) SHALL BE INSTALLED PRIOR TO THE START OF BRIDGE DECK PATCHING.

ANY TIME THAT THE BRIDGE DECK HAS OPEN HOLES, THEY SHALL BE COVERED WITH METAL PLATES CAPABLE OF CARRYING THE FULL WEIGHT OF AN ERRANT VEHICLE. PLATES SHALL BE PLACED DIRECTLY ON THE CONCRETE DECK. PROJECTIONS ABOVE THE ROADWAY SURFACE GREATER THAN 1" ARE NOT PERMITTED EXCEPT FOR HEADS OF BOLTS.

IF EXISTING REINFORCEMENT IS DAMAGED, THE REINFORCEMENT SHALL BE REPAIRED USING APPROVED SPLICING METHOD.

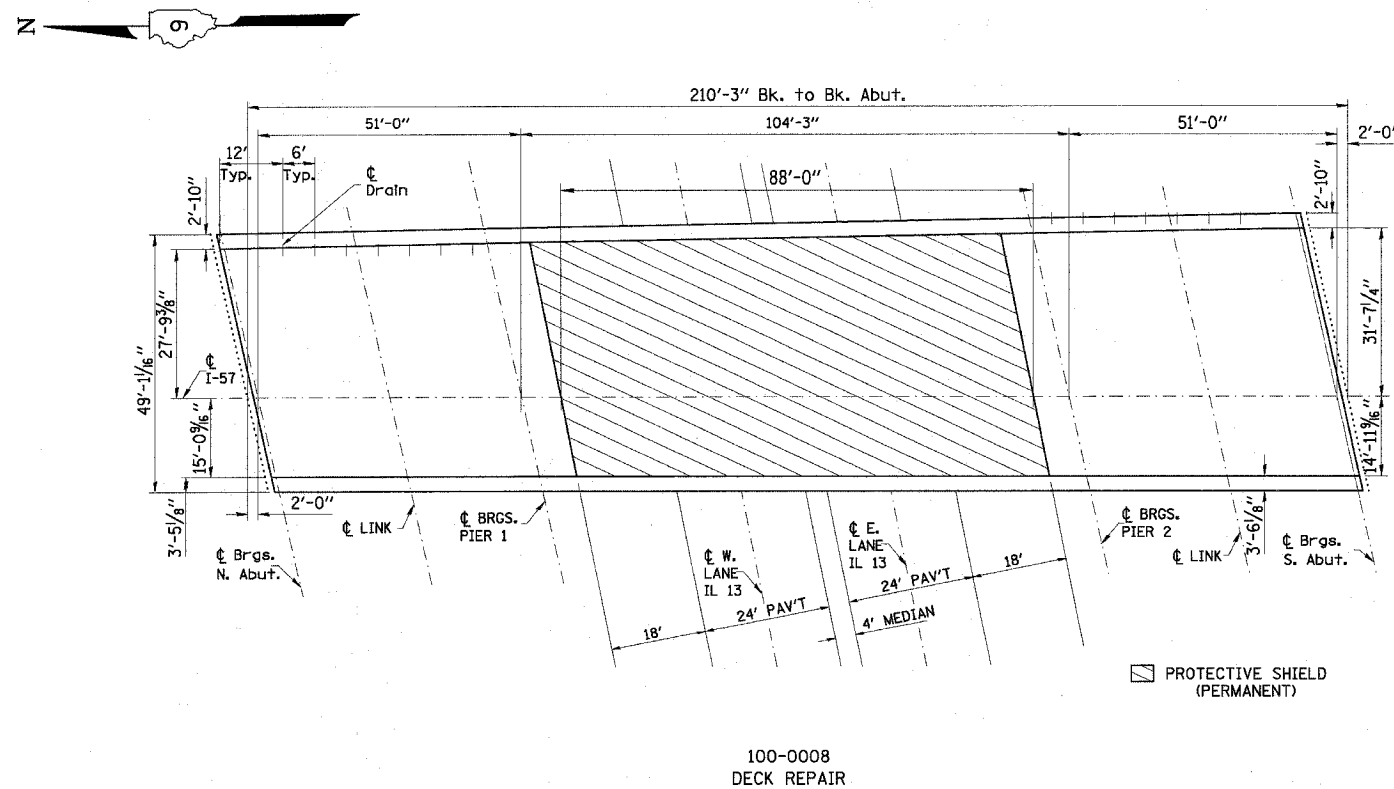


DECK SLAB REPAIR (FULL DEPTH)

NUMBER	LENGTH (FT.)	WIDTH (FT.)	AREA (SQ. YD.)	
			TYPE I	TYPE II
1	2	2	0.4	
2	2	2	0.4	
3	4	2		0.9
4	5	4		2.2
5	3	2		0.7
6	6	3		2.0
7	3	2		0.7
8	63	2		14.0
9	12	3		4.0
10	50	3		16.7
11	36	2		8.0
12	2	2	0.4	
13	2	2	0.4	

BILL OF MATERIALS

ITEM	UNIT	TOTAL
DECK SLAB REPAIR (FULL DEPTH, TYPE I)	SQ. YD.	2
DECK SLAB REPAIR (FULL DEPTH, TYPE II)	SQ. YD.	50
PROTECTIVE SHIELD (PERMANENT)	SQ. YD.	437
DECK SLAB REPAIR (PARTIAL)	SQ. YD.	100



PLOT DATE = 4/10/2007
 FILE NAME = c:\nrc\projects\98950\100-0008\100-0008.dwg
 PLOT SCALE = 50.0000 / 1" = 50.0000'
 USER NAME = harsden

REVISIONS	
NAME	DATE

ILLINOIS DEPARTMENT OF TRANSPORTATION
PRE-STAGE 1 AND PRE-STAGE 2
I-57
NORTHBOUND BRIDGE
100-0008

SCALE: VERT. NONE
 HORIZ.

DRAWN BY CNH
 CHECKED BY

Rev. Sheet 4-10-07

F.A. RTE.	SECTION	COUNTY	TOTAL SHEETS	SHEET NO.
*	**	WILLIAMSON	917	117
STA.		TO STA.		
FED. ROAD DIST. NO.		ILLINOIS FED. AID PROJECT		
		* I-57, & OLD IL 13 (FAU 9629)		
		** (X1-6-2)VB-2,(X1-6)HBK-2		

NOTES:

DECK PATCHING SURVEY WAS PERFORMED IN MARCH, 2007.

QUANTITIES SHOWN IN THE PLANS FOR PATCHING ARE ESTIMATES. THE RESIDENT ENGINEER WILL DETERMINE FINAL PATCH LOCATIONS AND QUANTITIES IN THE FIELD BEFORE BRIDGE DECK PATCHING OPERATIONS BEGIN.

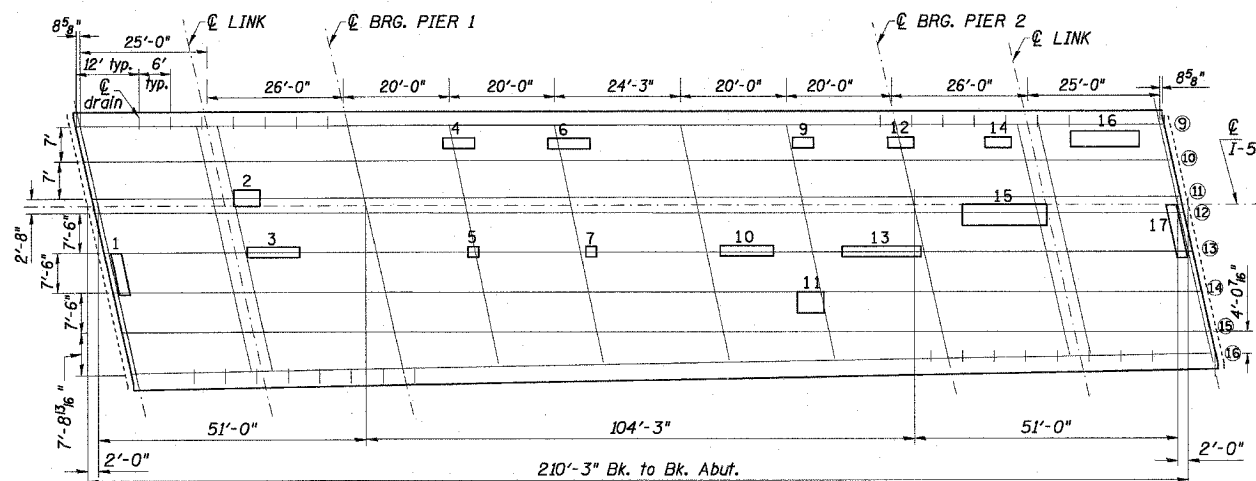
THE RESIDENT ENGINEER WILL MARK THE PLAN VIEW FOR THE DECK REPAIRS TO BE INCORPORATED IN THE AS BUILT PLANS.

EXISTING PROTECTIVE SHIELD SHALL BE REMOVED BY THE CONTRACTOR. THE MATERIAL SHALL BECOME THE PROPERTY OF THE CONTRACTOR. THIS WORK SHALL BE INCLUDED IN THE COST FOR PROTECTIVE SHIELD (PERMANENT).

THE PROTECTIVE SHIELD (PERMANENT) SHALL BE INSTALLED PRIOR TO THE START OF BRIDGE DECK PATCHING.

ANY TIME THAT THE BRIDGE DECK HAS OPEN HOLES, THEY SHALL BE COVERED WITH METAL PLATES CAPABLE OF CARRYING THE FULL WEIGHT OF AN ERRANT VEHICLE. PLATES SHALL BE PLACED DIRECTLY ON THE CONCRETE DECK. PROJECTIONS ABOVE THE ROADWAY SURFACE GREATER THAN 1" ARE NOT PERMITTED EXCEPT FOR HEADS OF BOLTS.

IF EXISTING REINFORCEMENT IS DAMAGED, THE REINFORCEMENT SHALL BE REPAIRED USING APPROVED SPLICING METHOD.



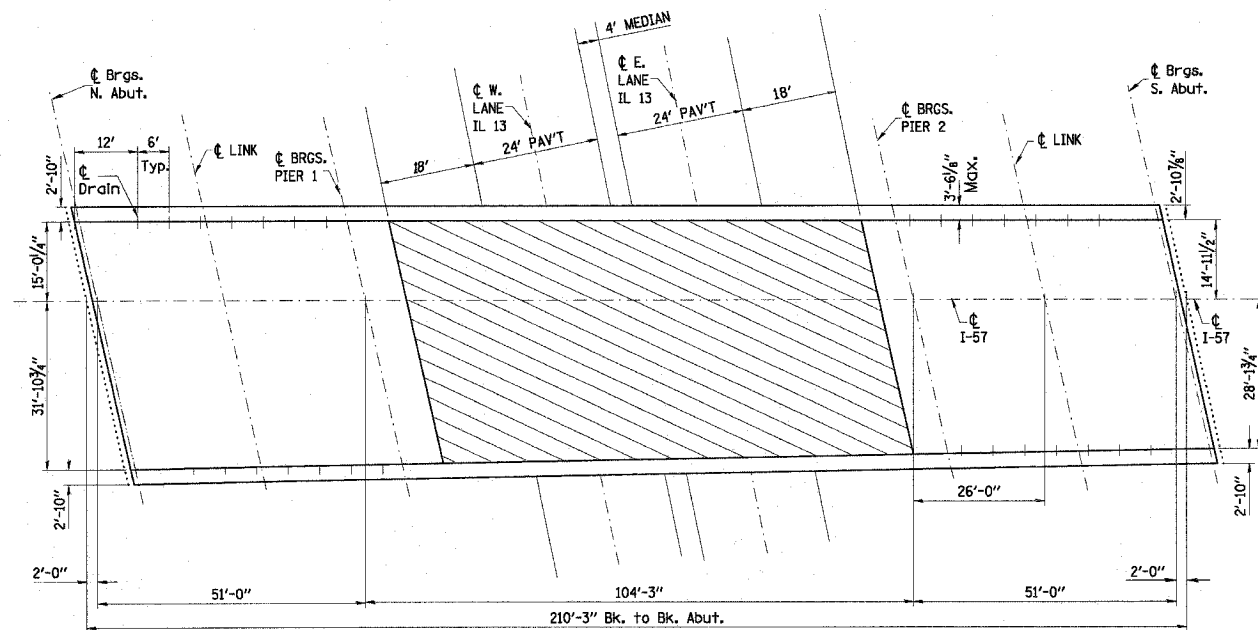
SOUTHBOUND BRIDGE
100-0009

DECK SLAB REPAIR (FULL DEPTH)

NUMBER	LENGTH (FT.)	WIDTH (FT.)	AREA (SQ. YD.)	
			TYPE I	TYPE II
1	8	2		1.8
2	5	3		1.7
3	10	2		2.2
4	6	2		1.3
5	2	2	0.4	
6	8	2		1.8
7	2	2	0.4	
9	4	2		0.9
10	10	2		2.2
11	5	4		2.2
12	5	2		1.1
13	15	2		3.3
14	5	2		1.1
15	16	4		7.1
16	13	3		4.3
17	10	2		2.2

BILL OF MATERIALS

ITEM	UNIT	TOTAL
DECK SLAB REPAIR (FULL DEPTH, TYPE I)	SQ. YD.	1
DECK SLAB REPAIR (FULL DEPTH, TYPE II)	SQ. YD.	34
PROTECTIVE SHIELD (PERMANENT)	SQ. YD.	441
DECK SLAB REPAIR (PARTIAL)	SQ. YD.	100



100-0009
DECK REPAIR

PROTECTIVE SHIELD
(PERMANENT)

REVISIONS	
NAME	DATE

ILLINOIS DEPARTMENT OF TRANSPORTATION
PRE-STAGE 1 AND PRE-STAGE 2
I-57
SOUTHBOUND BRIDGE
100-0009

SCALE: VERT. NONE
HORIZ.

DRAWN BY CNH
CHECKED BY

PLOT DATE = 4/10/2007
FILE NAME = c:\projects\98950\100-0009\100-0009.dgn
PLOT SCALE = 50.0000 / 1 IN.
USER NAME = hudson

Rev. Sheet 4-10-07