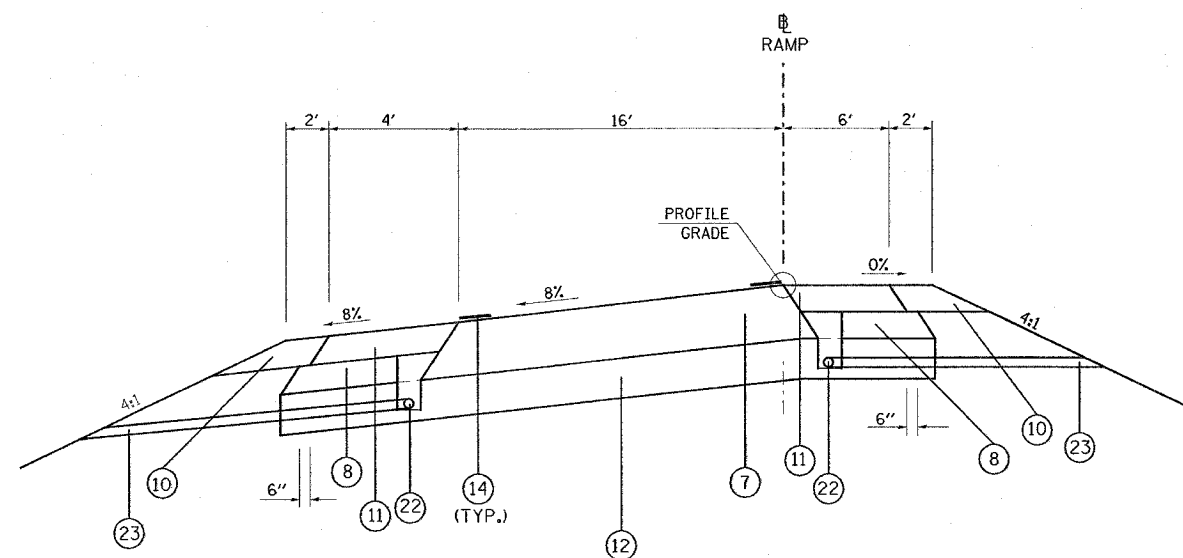


F.A. RTE.	SECTION	COUNTY	TOTAL SHEETS	SHEET NO.
*	**	WILLIAMSON	917	73

STA.	TO STA.
FED. ROAD DIST. NO.	ILLINOIS FED. AID PROJECT

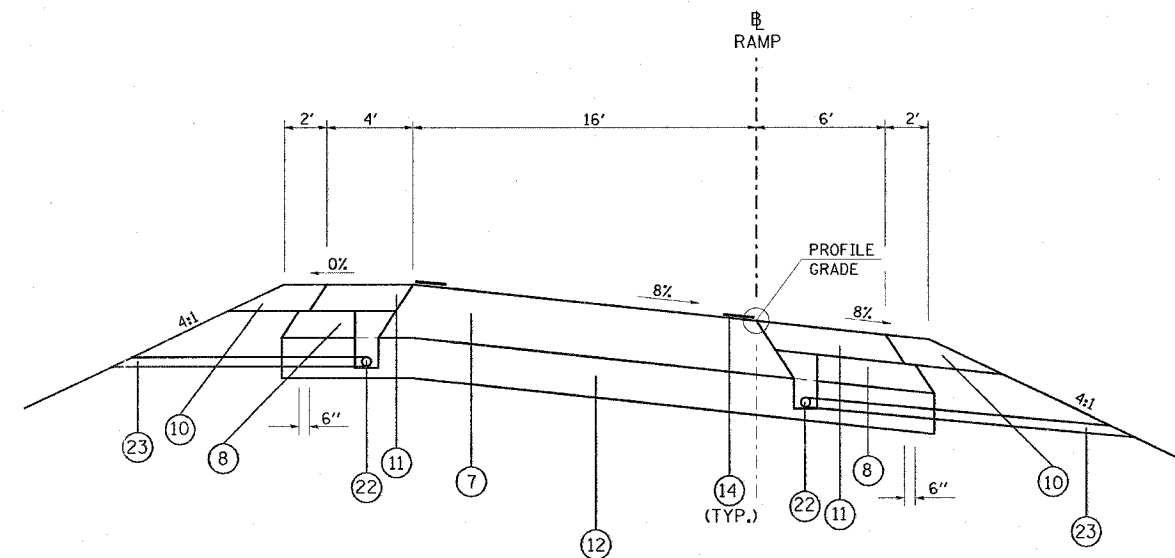
* I-57, & OLD IL 13 (FAU 9629)
 ** (X1-6-2)VB-2,(X1-6)HBK-2

TYPICAL SECTION - RAMP



TO BE USED:

RAMP E: STA. 6+38 TO STA. 8+33
 RAMP F: STA. 10+89 TO STA. 11+15



TO BE USED:

RAMP E: STA. 8+33 TO STA. 12+69 RAMP E = STA. 1519+58 @ I-57 NB
 RAMP EE: STA. 9+00 TO STA. 14+25
 RAMP F: STA. 4+40 TO STA. 10+89
 RAMP FF: STA. 4+50 TO STA. 8+00 (RT. I-57 STA. 1526+82)

- ① EXISTING CONCRETE PAVEMENT, 10"
- ② EXISTING BITUMINOUS SHOULDERS 8"
- ③ EXISTING AGGREGATE BASE COURSE
- ④ EXISTING SUB-BASE GRANULAR MATERIAL TYPE A 6"
- ⑤ EXISTING COMBINATION CONCRETE CURB AND GUTTER
- ⑥ EXISTING BITUMINOUS RESURFACING
- ⑦ BITUMINOUS CONCRETE PAVEMENT (FULL DEPTH), SUPERPAVE, 14 1/4"
 POLYMERIZED BITUMINOUS CONCRETE SURFACE COURSE, SUPERPAVE, MIX. D, N105, 1 1/2"
 POLYMERIZED BITUMINOUS CONCRETE BINDER COURSE, SUPERPAVE, IL-19.0, N105, 2 1/4"
 BITUMINOUS CONCRETE BINDER COURSE, SUPERPAVE, N90, 10 1/2"
- ⑧ SUB-BASE GRANULAR MATERIAL, TYPE C
- ⑨ STABILIZED SUB-BASE 4"
- ⑩ AGGREGATE SHOULDERS, TYPE A, 8"
- ⑪ BITUMINOUS SHOULDERS SUPERPAVE, 8"
- ⑫ PROCESSING LIME MODIFIED SOILS 12"
- ⑬ POLYUREA PAVEMENT MARKING TYPE II - LINE 4"
- ⑭ THERMOPLASTIC PAVEMENT MARKING - LINE 4"
- ⑮ PORTLAND CEMENT CONCRETE PAVEMENT 10" (JOINTED)
- ⑯ PAVEMENT REMOVAL
- ⑰ COMBINATION CURB AND GUTTER REMOVAL
- ⑱ PAVED SHOULDER REMOVAL
- ⑲ COMBINATION CONCRETE CURB AND GUTTER, TYPE B-6.06
- ⑳ COMBINATION CONCRETE CURB AND GUTTER, TYPE B-6.24
- ㉑ CONCRETE MEDIAN SURFACE, 4 INCH
- ㉒ PIPE UNDERDRAINS 4"
- ㉓ PIPE UNDERDRAINS 4" (SPECIAL)
- ㉔ EXISTING BITUMINOUS RESURFACING (VARIES 4 1/2" TO 5 1/4")
- ㉕ EXISTING 10" P.C.C. PAVEMENT, 1 1/2" PARABOLIC CROWN
- ㉖ EXISTING 6" AGGREGATE SUB-BASE (4" ON RAMP "C")
- ㉗ BITUMINOUS SHOULDERS SUPERPAVE

- ㉘ BITUMINOUS CONCRETE BINDER COURSE, SUPERPAVE, IL-19.0, N90 9 3/4"
- ㉙ TEMPORARY PAINT PAVEMENT MARKING
- ㉚ RELOCATE TEMPORARY CONCRETE BARRIER
- ㉛ BITUMINOUS CONCRETE BINDER COURSE, SUPERPAVE, IL-19.0, N90 11"
- ㉜ BITUMINOUS CONCRETE BINDER COURSE, SUPERPAVE, IL-19.0, N90 12"
- ㉝ POLYMERIZED BITUMINOUS CONCRETE BINDER COURSE, SUPERPAVE, IL-19.0, N105 2 1/4"
- ㉞ STEEL PLATE BEAM GUARDRAIL, TYPE A
- ㉟ SUB-BASE GRANULAR MATERIAL 6"
- ㊱ BITUMINOUS CONCRETE BINDER COURSE, SUPERPAVE, IL-19.0, N90 5"
- ㊲ SUB-BASE GRANULAR MATERIAL 10"
- ㊳ BITUMINOUS CONCRETE BINDER COURSE, SUPERPAVE, IL-19.0, N90 (VAR)

NOTES:

- REPLACE AGGREGATE SHOULDERS TYPE A 8" WITH BITUMINOUS SHOULDERS SUPERPAVE, 8" AT THE FOLLOWING LOCATIONS WHERE GUARDRAIL IS LOCATED.
 RAMP F: STA. 2+69 TO STA. 7+64
 RAMP FF: STA. 6+40 TO STA. 9+96
 RAMP E: STA. 8+53 TO STA. 14+72
- SEE THE RAMP E-EE GEOMETRICS SHEET, RAMP F-FF GEOMETRICS SHEET FOR SUPER TRANSITIONS.
- ALL RAMP PAVEMENT IS TO BE BUILT ON EARTH EMBANKMENT, SEE CROSS SECTIONS.

REVISIONS	
NAME	DATE

ILLINOIS DEPARTMENT OF TRANSPORTATION

TYPICAL SECTIONS - RAMPS

SCALE: VERT. NO SCALE
 HORIZ. DATE

DRAWN BY CNH
 CHECKED BY