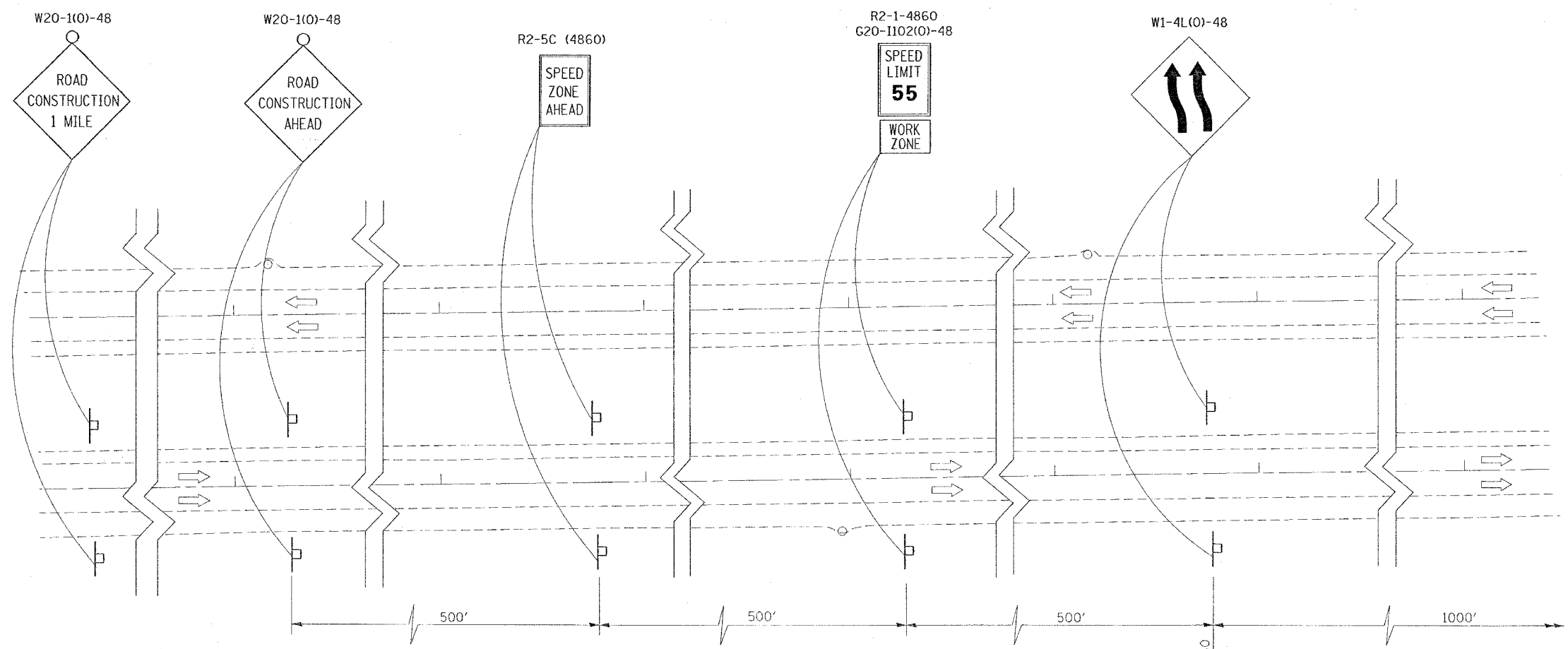


F.A. RTE.	SECTION	COUNTY	TOTAL SHEETS	SHEET NO.
*	**	WILLIAMSON	917	298
STA.		TO STA.		
FED. ROAD DIST. NO.		ILLINOIS FED. AID PROJECT		

* I-57, & OLD IL 13 (FAU 9629)
 ** (X1-6-2)VB-2,(X1-6)HBK-2



ROAD CONSTRUCTION AHEAD SIGNS SHALL BE PLACED AT TWO (2) MILES AND THREE (3) MILES PRIOR TO THE CONSTRUCTION SITE.

PLOT DATE = 10/18/2006
 FILE NAME = c:\p\proj\1489+60\old\1489+60\1489+60-2.dgn
 PLOT SCALE = 300.0000 / IN.
 USER NAME = hudson

REVISIONS	
NAME	DATE

ILLINOIS DEPARTMENT OF TRANSPORTATION
FAI-57
STAGE 4
SHEET 10 OF 17

SCALE: VERT. NONE
 HORIZ.
 DATE
 DRAWN BY CNH
 CHECKED BY