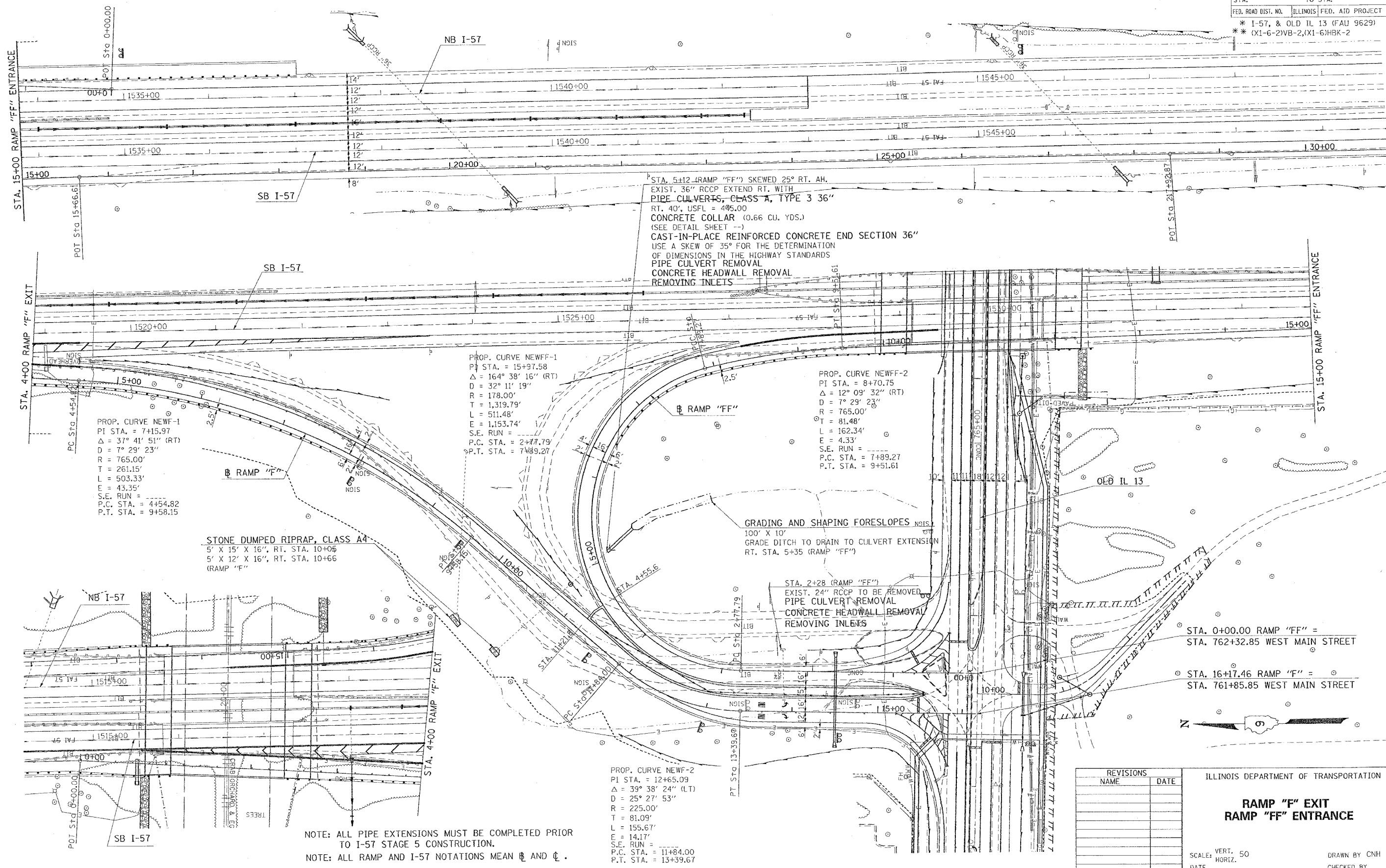


F.A. RTE.	SECTION	COUNTY	TOTAL SHEETS	SHEET NO.
*	*	WILLIAMSON	917	383

STA.	TO STA.

FED. ROAD DIST. NO. ILLINOIS FED. AID PROJECT
 * I-57, & OLD IL 13 (FAU 9629)
 ** (X1-6-2)VB-2,(X1-6)HBK-2



PROP. CURVE NEWFF-1
 PI STA. = 7+15.97
 $\Delta = 37^\circ 41' 51''$ (RT)
 $D = 7^\circ 29' 23''$
 $R = 765.00'$
 $T = 261.15'$
 $L = 503.33'$
 $E = 43.35'$
 $S.E. RUN =$
 $P.C. STA. = 4+54.82$
 $P.T. STA. = 9+58.15$

PROP. CURVE NEWFF-1
 PI STA. = 15+97.58
 $\Delta = 164^\circ 38' 16''$ (RT)
 $D = 32^\circ 11' 19''$
 $R = 178.00'$
 $T = 1,319.79'$
 $L = 511.48'$
 $E = 1,153.74'$
 $S.E. RUN =$
 $P.C. STA. = 2+77.79$
 $P.T. STA. = 7+89.27$

PROP. CURVE NEWFF-2
 PI STA. = 8+70.75
 $\Delta = 12^\circ 09' 32''$ (RT)
 $D = 7^\circ 29' 23''$
 $R = 765.00'$
 $T = 81.48'$
 $L = 162.34'$
 $E = 4.33'$
 $S.E. RUN =$
 $P.C. STA. = 7+89.27$
 $P.T. STA. = 9+51.61$

STONE DUMPED RIPRAP, CLASS A4
 5' X 15' X 16", RT. STA. 10+05
 5' X 12' X 16", RT. STA. 10+66
 (RAMP "F")

GRADING AND SHAPING FORESLOPES
 100' X 10'
 GRADE DITCH TO DRAIN TO CULVERT EXTENSION
 RT. STA. 5+35 (RAMP "FF")

STA. 2+28 (RAMP "FF")
 EXIST. 24" RCCP TO BE REMOVED
 PIPE CULVERT REMOVAL
 CONCRETE HEADWALL REMOVAL
 REMOVING INLETS

STA. 0+00.00 RAMP "FF" =
 STA. 762+32.85 WEST MAIN STREET
 STA. 16+17.46 RAMP "F" =
 STA. 761+85.85 WEST MAIN STREET

PROP. CURVE NEWFF-2
 PI STA. = 12+65.09
 $\Delta = 39^\circ 38' 24''$ (LT)
 $D = 25^\circ 27' 53''$
 $R = 225.00'$
 $T = 81.09'$
 $L = 155.67'$
 $E = 14.17'$
 $S.E. RUN =$
 $P.C. STA. = 11+84.00$
 $P.T. STA. = 13+39.67$

NOTE: ALL PIPE EXTENSIONS MUST BE COMPLETED PRIOR TO I-57 STAGE 5 CONSTRUCTION.
 NOTE: ALL RAMP AND I-57 NOTATIONS MEAN \mathbb{R} AND \mathbb{L} .

REVISIONS	
NAME	DATE

ILLINOIS DEPARTMENT OF TRANSPORTATION
**RAMP "F" EXIT
 RAMP "FF" ENTRANCE**
 SCALE: VERT. 50
 HORIZ. DATE
 DRAWN BY CNH
 CHECKED BY

PLOT DATE = 10/10/2006
 FILE NAME = s:\projects\98950\98950.dwg
 PLOT SCALE = 50.0000 / 1"
 USER = JEFFREY.ABENT, TPO/RAMP, AEGIT, IPEKIT