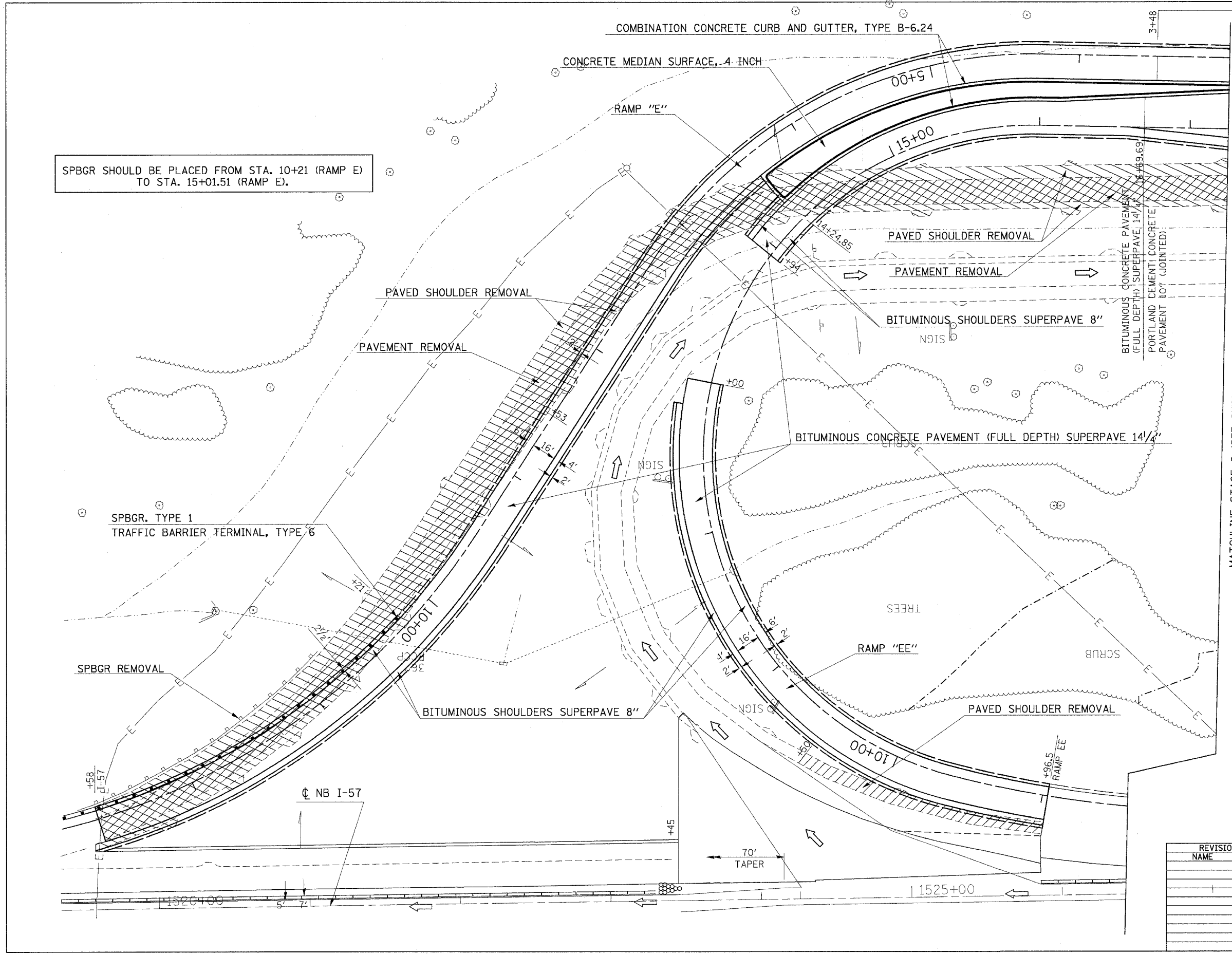


F.A. RTE.	SECTION	COUNTY	TOTAL SHEETS	SHEET NO.
*	*	WILLIAMSON	917	413
STA.		TO STA.		
FED. ROAD DIST. NO.		ILLINOIS FED. AID PROJECT		
* I-57, & OLD IL 13 (FAU 9629)				
** (X1-6-2)VB-2,(X1-6)HBK-2				

SPBGR SHOULD BE PLACED FROM STA. 10+21 (RAMP E) TO STA. 15+01.51 (RAMP E).



BITUMINOUS CONCRETE PAVEMENT (FULL DEPTH) SUPERPAVE 14 1/4"  
 PORTLAND CEMENT CONCRETE PAVEMENT 10" (JOINTED)

MATCHLINE STAGE 6 (SEE SHEET 2 OF 4)

SPBGR. TYPE 1  
 TRAFFIC BARRIER TERMINAL, TYPE 6

SPBGR REMOVAL

CL NB I-57

PLOT DATE = 1/3/2007  
 FILE NAME = c:\proje\98950\98950.dwg  
 SCALE = 3/8" = 1' IN.  
 USER =

REVISIONS	
NAME	DATE

ILLINOIS DEPARTMENT OF TRANSPORTATION  
**RAMP "E" AND "EE"**  
**STAGE 6**  
**SHEET 1 OF 4**

SCALE: VERT. APPROX. 30  
 DATE:                      HORIZ.  
 DRAWN BY CNH  
 CHECKED BY