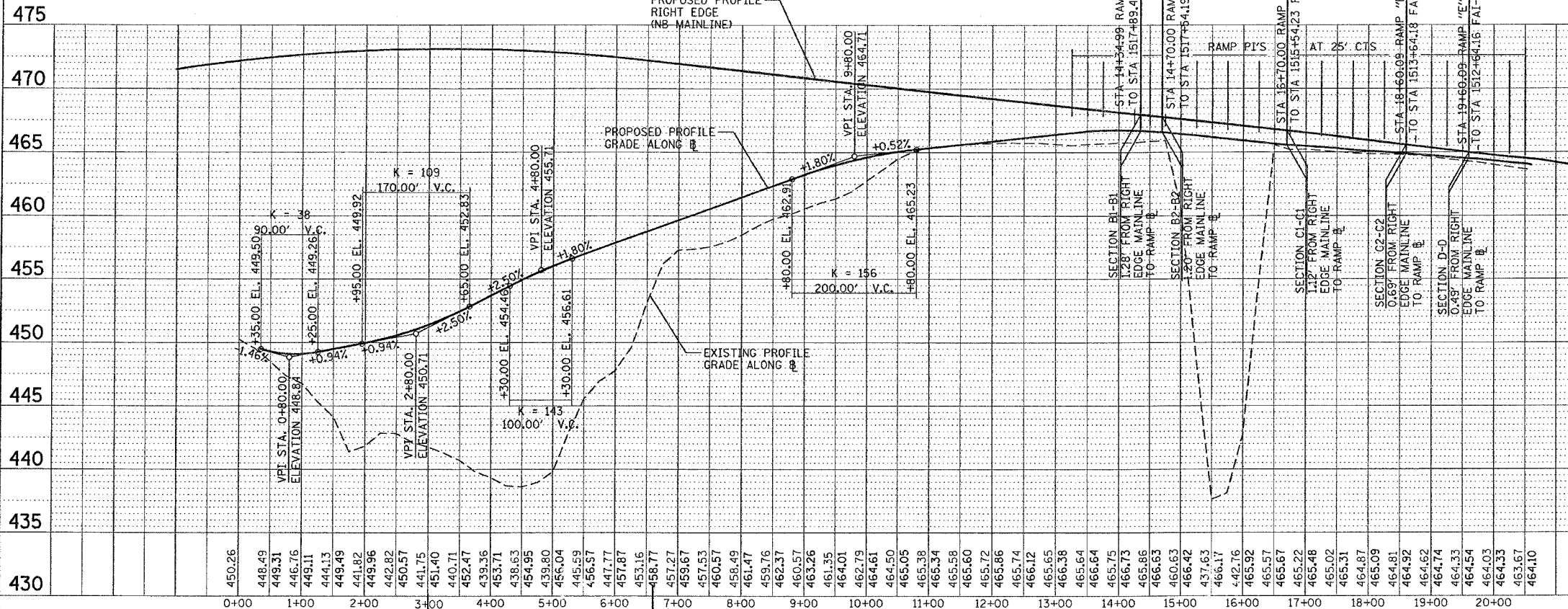


F.A. RTE.	SECTION	COUNTY	TOTAL SHEETS	SHEET NO.
*	*	WILLIAMSON	917	435
STA.		TO STA.		
FED. ROAD DIST. NO.		ILLINOIS FED. AID PROJECT		
* I-57, & OLD IL 13 (FAU 9629)				
** (X1-6-2)VB-2, (X1-6)HBK-2				

RAMP "E" ENTRANCE

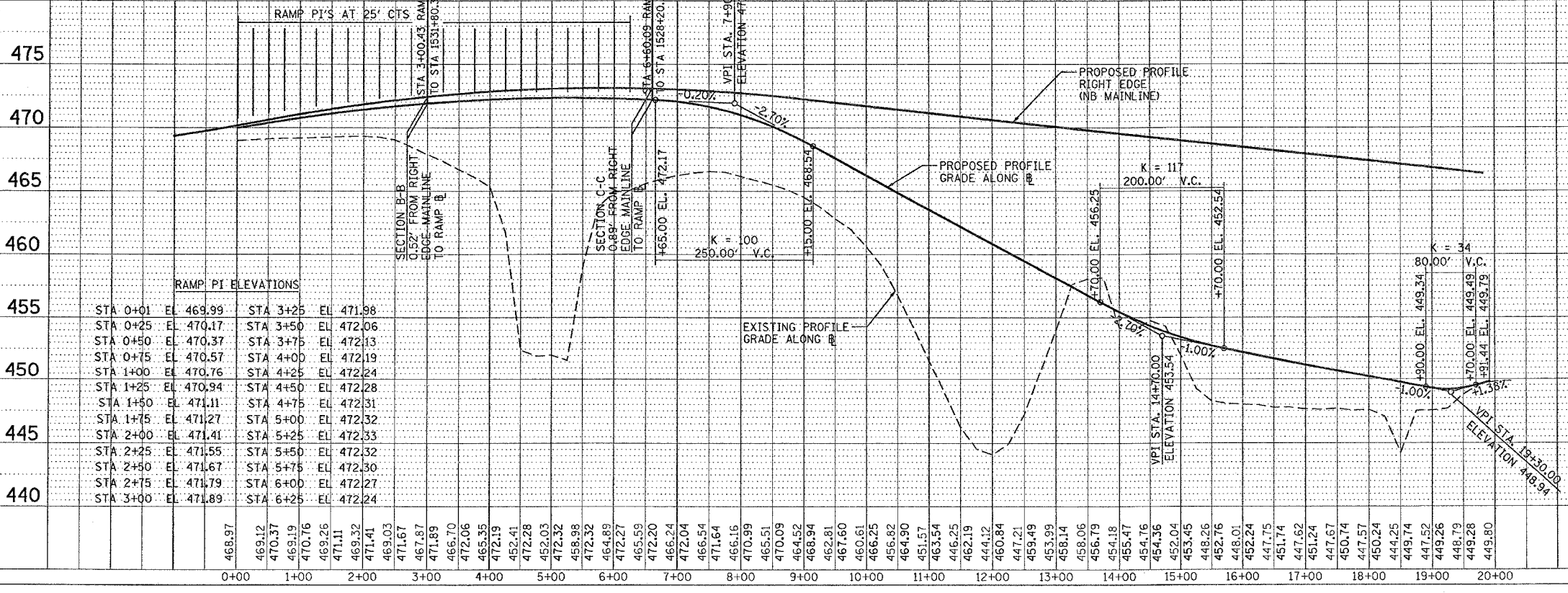


RAMP PI ELEVATIONS

STA 13+25	EL 466.51	STA 17+00	EL 465.48
STA 13+50	EL 466.64	STA 17+25	EL 465.40
STA 13+75	EL 466.71	STA 17+50	EL 465.31
STA 14+00	EL 466.73	STA 17+75	EL 465.17
STA 14+25	EL 466.70	STA 18+00	EL 465.09
STA 14+50	EL 466.63	STA 18+25	EL 465.01
STA 14+75	EL 466.55	STA 18+50	EL 464.92
STA 15+00	EL 466.42	STA 18+75	EL 464.83
STA 15+25	EL 466.30	STA 19+00	EL 464.74
STA 15+50	EL 466.17	STA 19+25	EL 464.64
STA 15+75	EL 466.05	STA 19+50	EL 464.54
STA 16+00	EL 465.92	STA 19+75	EL 464.46
STA 16+25	EL 465.80	STA 20+00	EL 464.33
STA 16+50	EL 465.67	STA 20+25	EL 464.20
STA 16+75	EL 465.56	STA 20+50	EL 464.10

- DESIGN EXCEPTIONS
- K VALUES NEAR TERMINALS @ WEST MAIN ARE LESS THAN THOSE REQUIRED IN BDE FIG. 37-4F FOR THE 50 MPH (OUTER).
 - ALL RAMP CROSS SLOPES NEAR THE BRIDGES ARE DEVELOPED PERPENDICULAR TO FAI-57 CENTERLINES AND NOT RAMP BASELINES DUE TO THE NEED TO MAINTAIN A POSITIVE SLOPE FROM THE RIGHT EDGE OF THE RAMPS TO THE CENTERLINE OF THE MAINLINE ON THE BRIDGE DECKS; I.E. HIGHWAY STANDARDS 406001 & 406101, BDE FIG. 37-6B, AND FIG. 37-6L REQUIREMENTS FOR RIGHT EDGE OF MAINLINE TO EQUAL LEFT EDGE OF RAMP CAN NOT BE MAINTAINED, NOR CAN SAID STANDARDS & FIGURES REQUIREMENTS FOR PLACEMENT OF VERTICAL P.I.'S & GRADES.
 - RELATED TO ITEM #3, DUE TO THE VERTICAL ALIGNMENT OF FAI-57, REQUIREMENTS FOR PLACEMENT OF VERTICAL P.I.'S & GRADES CAN NOT BE MAINTAINED. GENERALLY, P.I.'S AT 25' INTERVALS WERE USED TO EFFECT REQUIRED CROSS SLOPES THROUGH THE MAJORITY OF THE GORE AREAS.

RAMP "EE" EXIT



RAMP PI ELEVATIONS

STA 0+01	EL 469.99	STA 3+25	EL 471.98
STA 0+25	EL 470.17	STA 3+50	EL 472.06
STA 0+50	EL 470.37	STA 3+75	EL 472.13
STA 0+75	EL 470.57	STA 4+00	EL 472.19
STA 1+00	EL 470.76	STA 4+25	EL 472.24
STA 1+25	EL 470.94	STA 4+50	EL 472.28
STA 1+50	EL 471.11	STA 4+75	EL 472.31
STA 1+75	EL 471.27	STA 5+00	EL 472.32
STA 2+00	EL 471.41	STA 5+25	EL 472.33
STA 2+25	EL 471.55	STA 5+50	EL 472.32
STA 2+50	EL 471.67	STA 5+75	EL 472.30
STA 2+75	EL 471.79	STA 6+00	EL 472.27
STA 3+00	EL 471.89	STA 6+25	EL 472.24

ILLINOIS DEPARTMENT OF TRANSPORTATION

PROFILES
RAMP "EE" EXIT
RAMP "E" ENTRANCE

SCALE: VERT. 5
HORIZ. 100

DATE _____ DRAWN BY _____
DATE _____ CHECKED BY _____

PLAN
SERVICES
DATE
BY
NOTED
NO. _____

PROFILE
SERVICES
DATE
BY
NOTED
NO. _____

PLC DATE = 10/17/2008
FILE NAME = c:\projects\98950\98950.dwg
PLOT SCALE = 1/8"=1'-0"
USER NAME = hudson