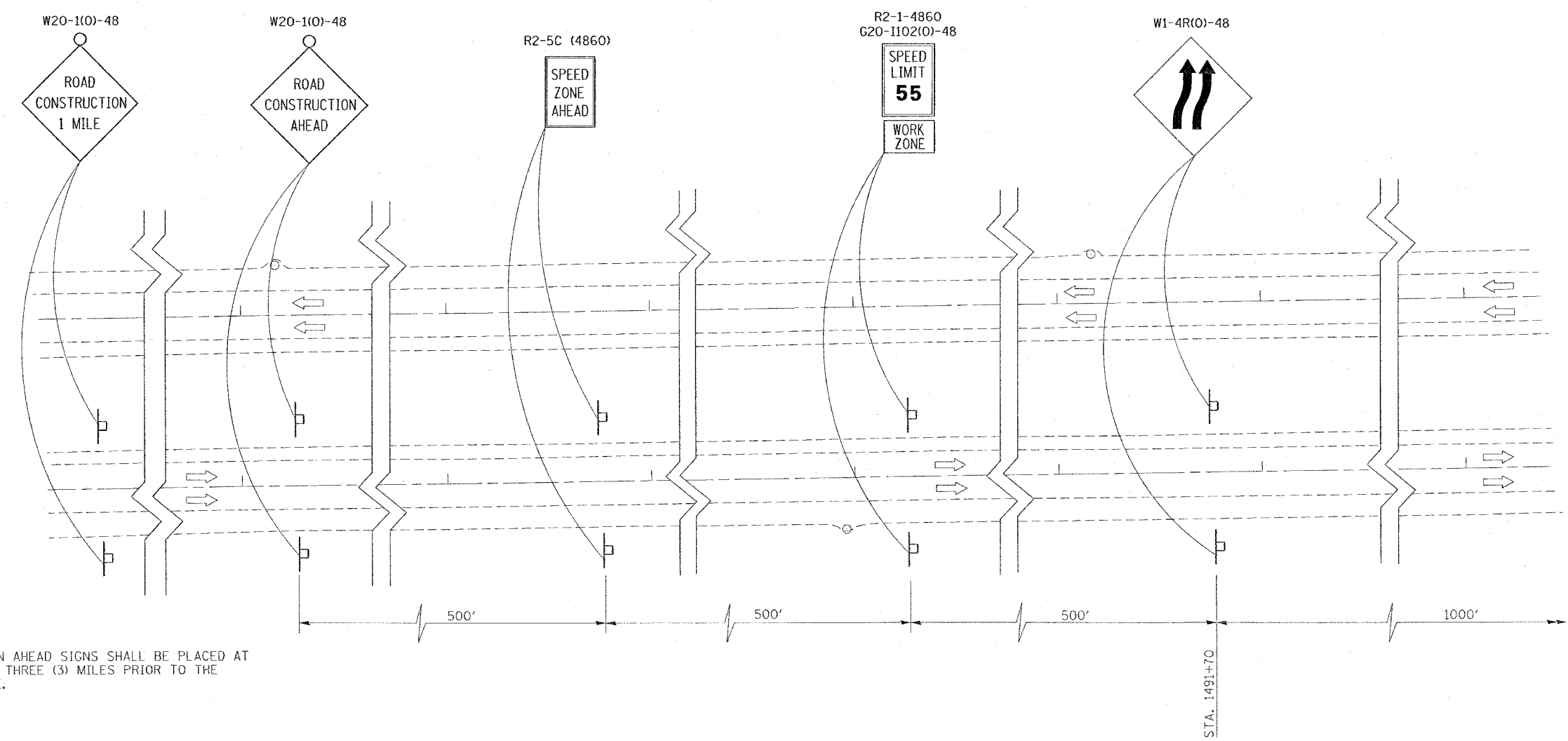


F.A. RTE.	SECTION	COUNTY	TOTAL SHEETS	SHEET NO.
*	**	WILLIAMSON	917	479

STA. TO STA.
 FED. ROAD DIST. NO. ILLINOIS FED. AID PROJECT
 * I-57, & OLD IL 13 (FAU 9629)
 ** (X1-6-2)VB-2,(X1-6)HBK-2



ROAD CONSTRUCTION AHEAD SIGNS SHALL BE PLACED AT TWO (2) MILES AND THREE (3) MILES PRIOR TO THE CONSTRUCTION SITE.

PLOT DATE = 10/17/2006
 FILE NAME = c:\p06\98950\98950.dwg
 USER NAME = nelson

REVISIONS	
NAME	DATE

ILLINOIS DEPARTMENT OF TRANSPORTATION
FAI-57
STAGE 7
SHEET 9 OF 16

SCALE: VERT. NONE
 HORIZ. NONE

DATE: _____ DRAWN BY CNH
 CHECKED BY _____