

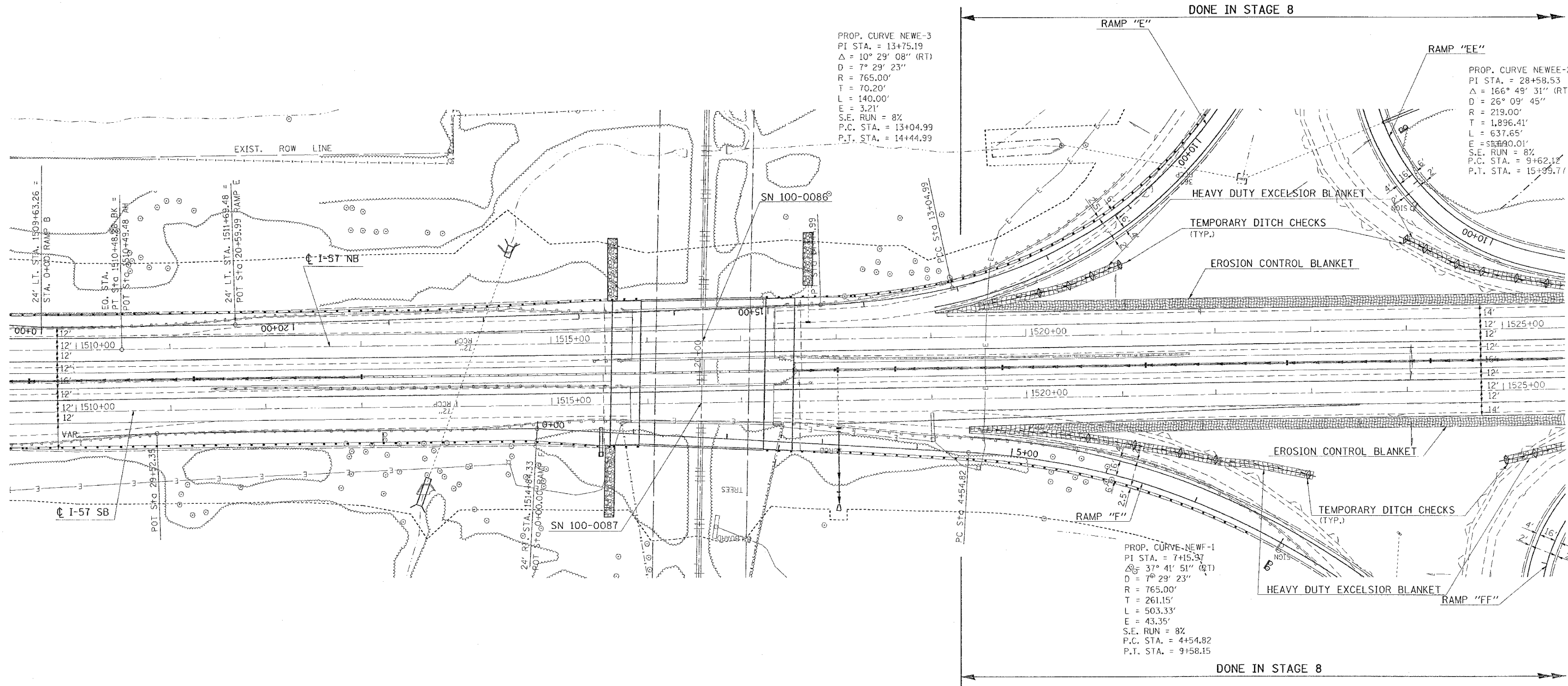
CONTRACT NO. 98950			
F.A. R/O	SECTION	COUNTY	TOTAL SHEETS
*	**	WILLIAMSON	917 604
STA.	TO STA.		
FED. ROAD DIST. NO.	ILLINOIS	FED. AID PROJECT	

PROP. CURVE NEWF-2
 PI STA. = 11+33.63
 Δ = 44° 37' 57" (RT)
 D = 12° 19' 18"
 R = 465.00'
 T = 190.86'
 L = 362.23'
 E = 37.65'
 S.E. RUN = 8%
 P.C. STA. = 9+42.77
 P.T. STA. = 13+04.99

* I-57, & OLD IL 13 (FAU 9629)
 ** (X1-6-2)VB-2,(X1-6)HBK-2

PROP. CURVE NEWF-3
 PI STA. = 13+75.19
 Δ = 10° 29' 08" (RT)
 D = 7° 29' 23"
 R = 765.00'
 T = 70.20'
 L = 140.00'
 E = 3.21'
 S.E. RUN = 8%
 P.C. STA. = 13+04.99
 P.T. STA. = 14+44.99

PROP. CURVE NEWF-4
 PI STA. = 28+58.53
 Δ = 166° 49' 31" (RT)
 D = 26° 09' 45"
 R = 219.00'
 T = 1,896.41'
 L = 637.65'
 E = 58.890.01'
 S.E. RUN = 8%
 P.C. STA. = 9+62.12
 P.T. STA. = 15+99.71



REVISIONS	
NAME	DATE

ILLINOIS DEPARTMENT OF TRANSPORTATION
TEMPORARY EROSION CONTROL FAI-57 FOR STAGES 7, 7A, 7B, 7C, 8
STA. 1510+00 TO STA. 1525+00
 SHEET 1 OF 2
 SCALE: VERT. 50
 HORIZ. DATE DRAWN BY CNH CHECKED BY

PLOT DATE = 10/11/2008
 FILE NAME = c:\p\projects\98950\02\02.dwg
 PLOT SCALE = 50.0000 / 1 IN.
 USER NAME = handon