

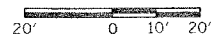
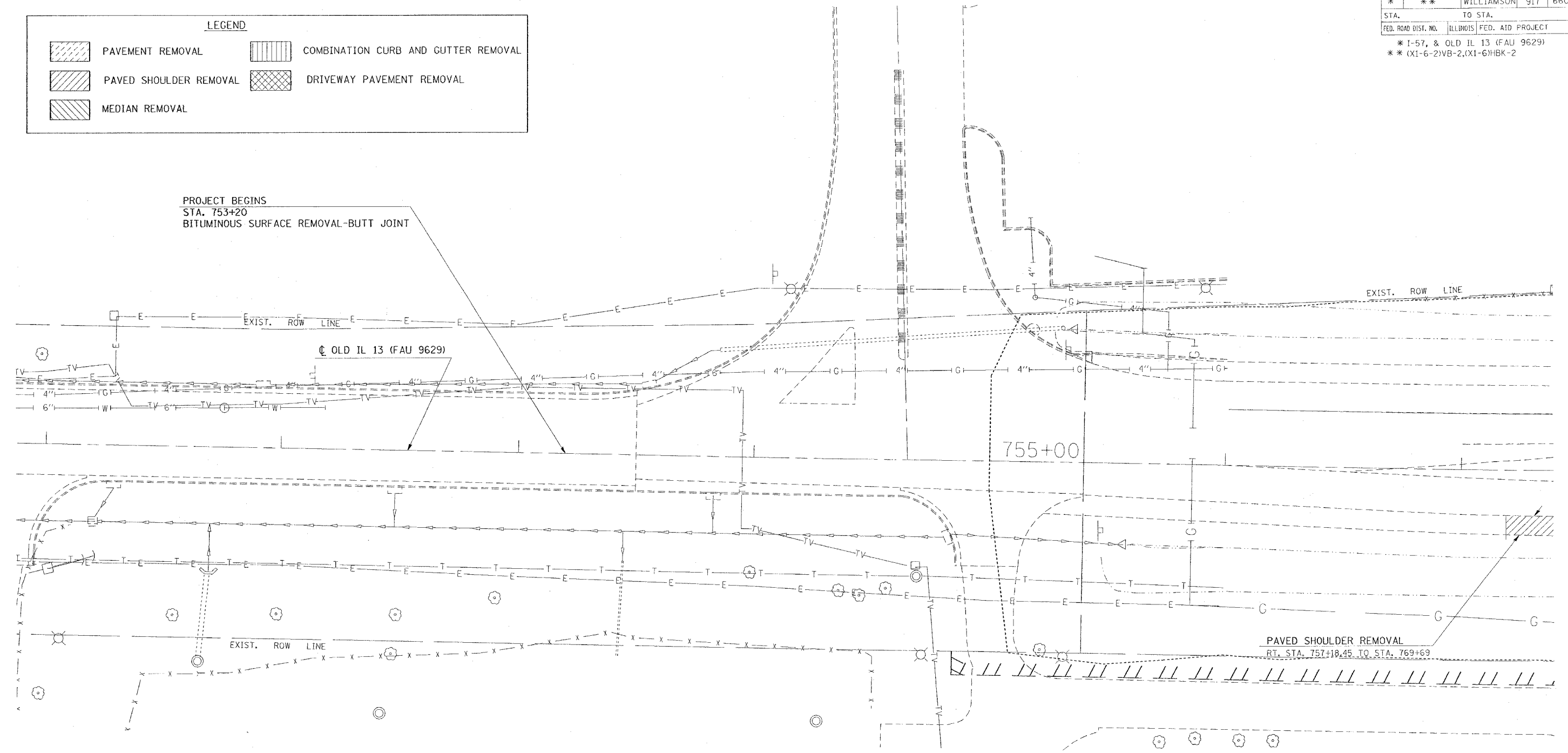
F.A. RTE.	SECTION	COUNTY	TOTAL SHEETS	SHEET NO.
*	**	WILLIAMSON	917	660
STA.		TO STA.		
FED. ROAD DIST. NO.	ILLINOIS FED. AID PROJECT			

* I-57, & OLD IL 13 (FAU 9629)
 ** (X1-6-2)VB-2,(X1-6)HBK-2

LEGEND

	PAVEMENT REMOVAL		COMBINATION CURB AND GUTTER REMOVAL
	PAVED SHOULDER REMOVAL		DRIVEWAY PAVEMENT REMOVAL
	MEDIAN REMOVAL		

PROJECT BEGINS
 STA. 753+20
 BITUMINOUS SURFACE REMOVAL-BUTT JOINT



PLOT DATE = 11/13/2008
 FILE NAME = c:\projects\98950\old\98950.dgn
 PLOT SCALE = 20.0000' / IN.
 USER NAME = hector

REVISIONS	
NAME	DATE

ILLINOIS DEPARTMENT OF TRANSPORTATION

OLD IL 13 REMOVAL SHEET
STA. 751+00 TO STA. 757+00

SCALE: VERT. 20'
 HORIZ. 1" = 40'

DATE: _____ DRAWN BY CNH
 CHECKED BY _____