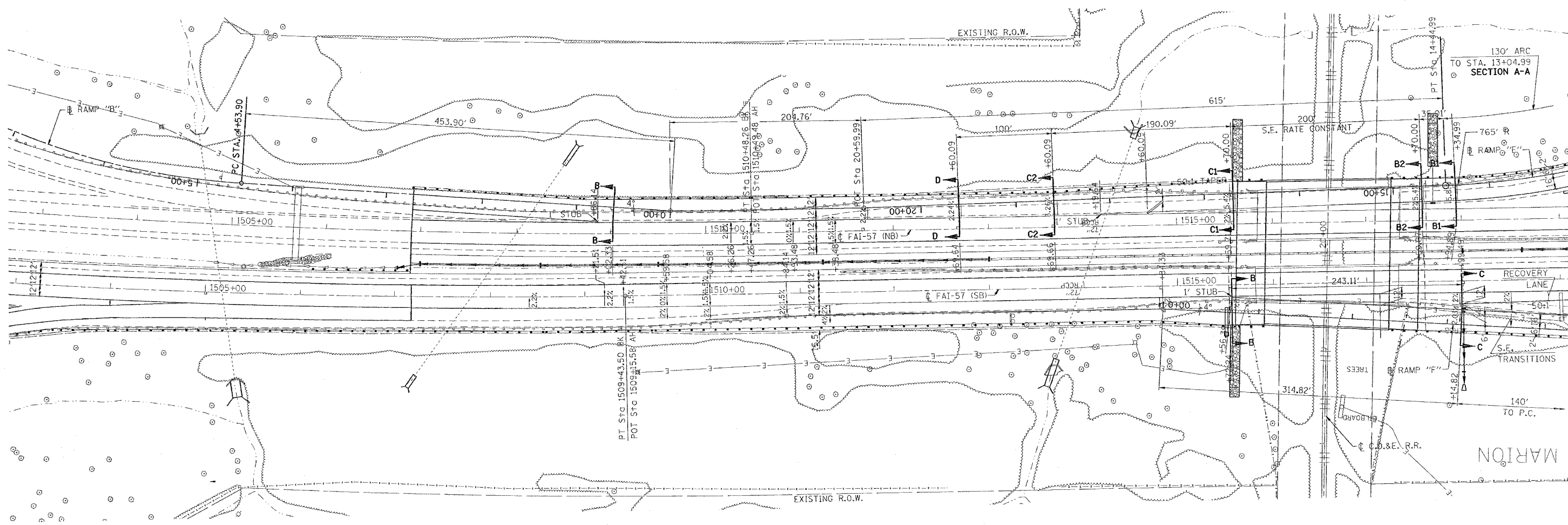




PROP. CURVE RAMP_E-3
 PI STA. = 13+75.19
 $\Delta = 10^\circ 29' 08''$ (RT)
 $D = 7^\circ 29' 23''$
 $R = 765.00'$
 $T = 70.20'$
 $L = 140.00'$
 $E = 3.21'$
 $e = 8\%$
 P.C. STA = 13+04.99
 P.T. STA = 14+44.99

CONTRACT NO. 98950				
F.A. RTE.	SECTION	COUNTY	TOTAL SHEETS	SHEET NO.
*	**	WILLIAMSON	917	723
STA.	TO STA.			
FED. ROAD DIST. NO.	ILLINOIS	FED. AID PROJECT		
* I-57, & OLD IL 13 (FAU 9629)				
** (X1-6-2)VB-2, (X1-6)HBK-2				



NOTE:
 EXISTING RAMP PAVEMENT AND SHOULDER SLOPES TRANSITION TO PROPOSED SLOPES FROM RT. STA. 1507+18 TO STA. 1508+25 (SBL).

PLOT DATE = 10/24/2008
 FILE NAME = c:\p\98950\13+04.99\1505+00.dwg
 USER NAME = hessan

REVISIONS	
NAME	DATE

ILLINOIS DEPARTMENT OF TRANSPORTATION
I-57
GEOMETRICS
STA. 1503+00 TO STA. 1519+00
 SCALE: VERT. 50
 HORIZ. 1" = 40'
 DATE _____ DRAWN BY CNH
 CHECKED BY _____