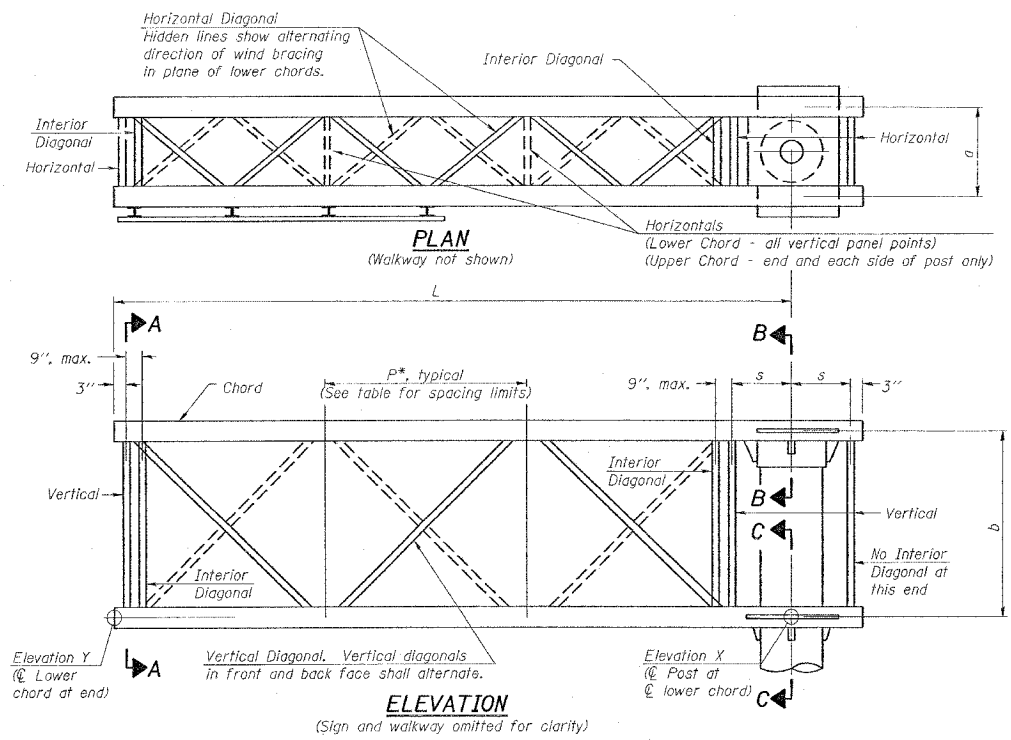
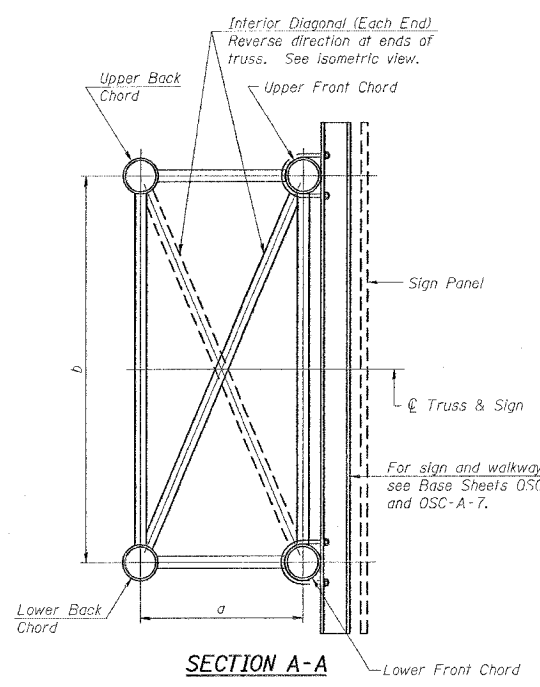


F.A. RTE.	SECTION	COUNTY	TOTAL SHEETS	SHEET NO.
*	**	WILLIAMSON	917	743
STA.		TO STA.		
FED. ROAD DIST. NO.		ILLINOIS FED. AID PROJECT		
* I-57, & OLD IL 13 (FAU 9629)				
** (X1-6-2)VB-2,(X1-6)HBK-2				

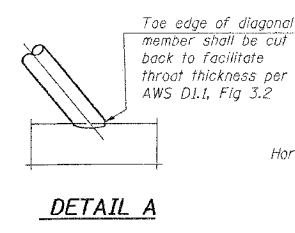


TYPICAL TRUSS UNIT
For Section B-B and Section C-C, see Base Sheet OSC-A-3.

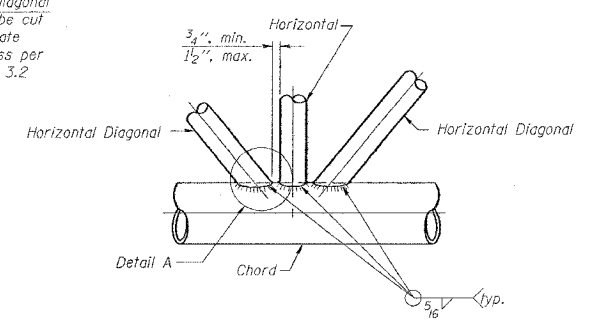
Note:
There are twice as many horizontal diagonals as there are vertical diagonals.



SECTION A-A

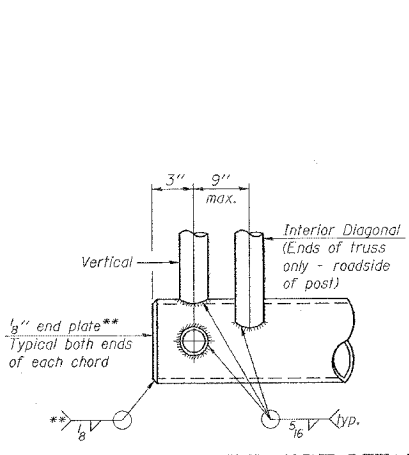


DETAIL A

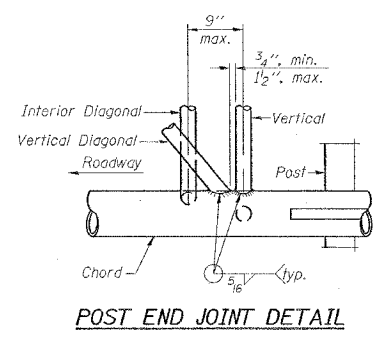


TRUSS INTERIOR JOINT DETAIL

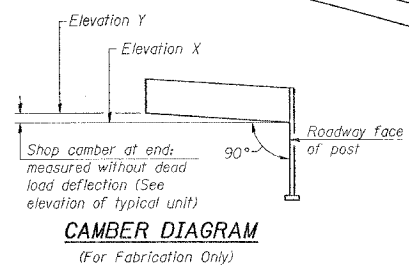
Structure Number	Station	Truss Type	Design Length (L)	Number of Panels Per Unit	Panel Length (P)*
9C1001057R53.1	1515+50	II-C-A	30'	7	4



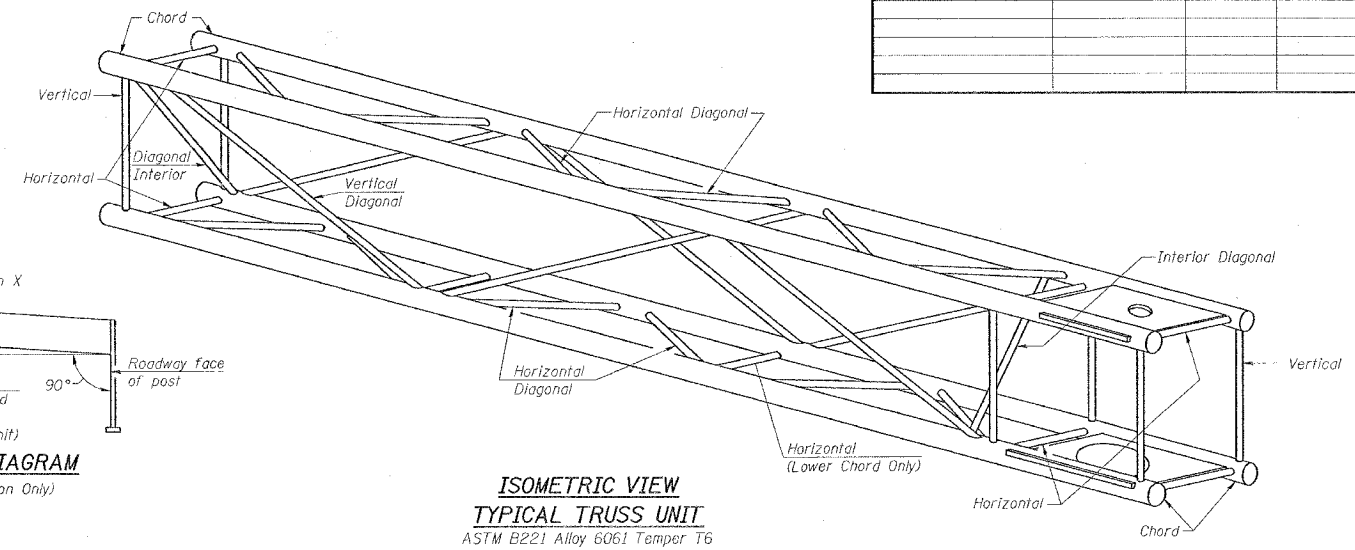
CANTILEVER END JOINT DETAIL
** Contractor may alternatively use standard aluminum drive-fit cap to close ends.



POST END JOINT DETAIL



CAMBER DIAGRAM
(For Fabrication Only)



ISOMETRIC VIEW TYPICAL TRUSS UNIT
ASTM B221 Alloy 6061 Temper T6

SHOP CAMBER TABLE

Unit Length (L)	Shop Camber at End
15'	1 1/2"
16'-17'	1 3/4"
18'-20'	2"
21'-22'	2 1/4"
23'-25'	2 1/2"
26'-27'	2 3/4"
28'-30'	3"
31'-32'	3 1/4"
33'-35'	3 1/2"
36'-37'	4"
38'-40'	4 1/2"

TRUSS UNIT TABLE

Truss Type	Dimension "a"	Dimension "b"	Dimension "s"	Limits for Panel Spacing (P)*	Verticals, Horizontals, Vertical, Horizontal, and Interior Diagonals		
					Up. & Low. Chord O.D.	Wall	O.D.
I-C-A	24"	54"	16"	36" min. to 48" max.	5"	5/16"	2 1/2"
II-C-A	36"	66"	21"	42" min. to 54" max.	6 1/2"	5/16"	3 1/4"
III-C-A (35' Max.)	36"	84"	21"	48" min. to 66" max.	7"	3/8"	3 1/2"
III-C-A (>35' to 40')	36"	84"	21"	48" min. to 66" max.	8"	3/8"	3 1/2"

*P = $\frac{L-s-3"}{n}$ Panels

NUMBER	REVISION	DATE

REVISIONS	
NAME	DATE

ILLINOIS DEPARTMENT OF TRANSPORTATION
CANTILEVER SIGN STRUCTURES TRUSS DETAILS
ALUMINUM TRUSS & STEEL POST
SCALE: VERT. NONE
HORIZ. DATE
DRAWN BY CNH
CHECKED BY

PLOT DATE = 10/12/2006
 PLOT SCALE = 500/8000
 USER NAME = hudson