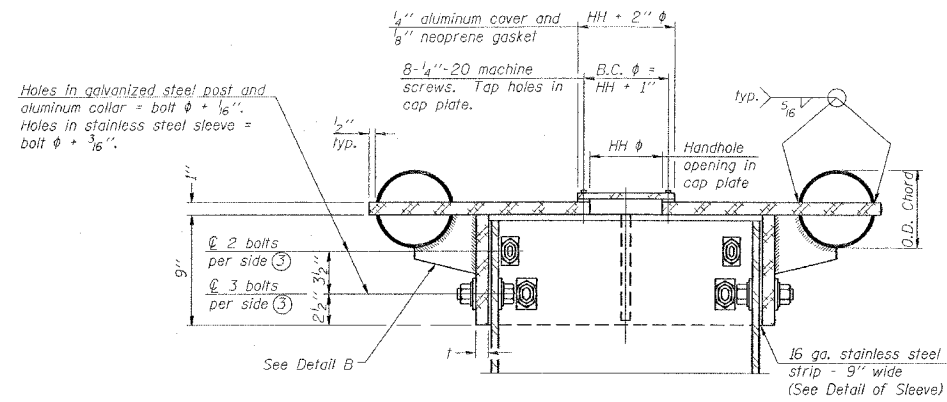
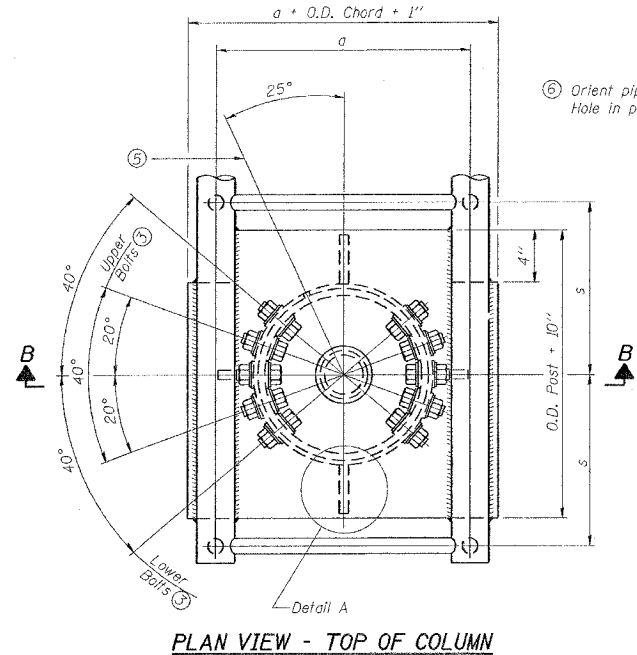


| F.A. RTE. | SECTION | COUNTY | TOTAL SHEETS | SHEET NO. |
|---|---------|------------|--------------|-----------|
| ** | ** | WILLIAMSON | 917 | 744 |
| STA. TO STA. | | | | |
| FED. ROAD DIST. NO. ILLINOIS FED. AID PROJECT | | | | |
| * I-57, & OLD IL 13 (FAU 9629) | | | | |
| ** (X1-6-2)VB-2,(X1-6)HBK-2 | | | | |

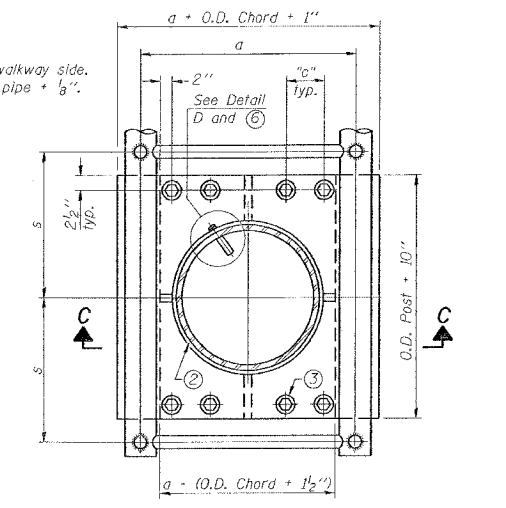


④ Collar I.D. shall be manufactured to correspond to O.D. of actual galvanized post and stainless steel sleeve plus 1/8" (+1/16"). Maximum gap between post and collar at any location equals 1/8" before tightening bolts.

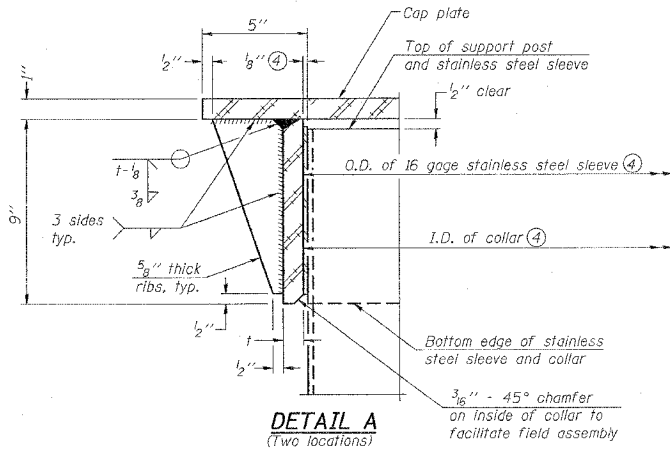
SECTION B-B
Bolts, washers (including contoured washers), and locknuts shall be stainless steel.



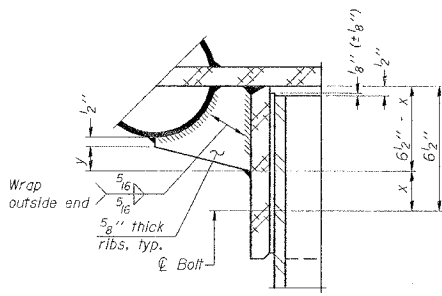
⑥ Orient pipe toward walkway side. Hole in post = O.D. pipe + 1/8".



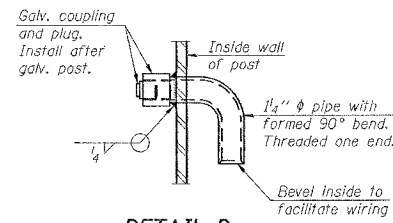
SECTION THRU POST ABOVE LOWER CHORDS



DETAIL A
(Two locations)

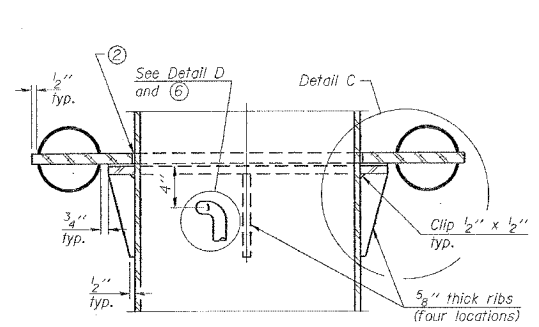


DETAIL B
Two locations
(For details not shown, see Detail C)

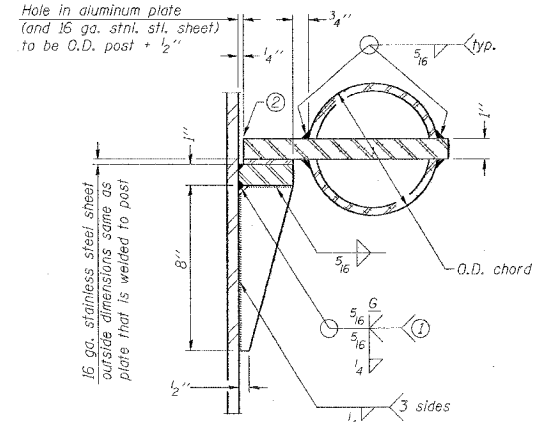


DETAIL D

5 Optional full penetration weld in collar. (Two locations maximum... (180° apart)... X-ray or UT 100%)

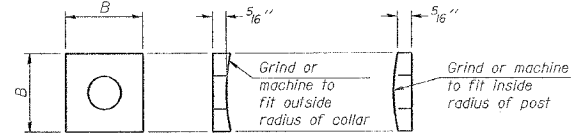


SECTION C-C



DETAIL C

- ① Grind top if required to fully seat aluminum plate and stainless steel sheet.
- ② After tightening lower connection bolts, fill gap with non-hardening, silicone caulk suitable for exterior exposure and acceptable to the Engineer. Cost is included in Overhead Sign Structure Cantilever.



CONTOURED WASHERS

| Bolt Size | Contoured Washers Hole Dia. | B |
|-----------|-----------------------------|--------|
| 7/8" | 1" | 2 1/2" |
| 1" | 1 1/8" | 3" |
| 1 1/4" | 1 3/8" | 3 1/4" |

DETAIL OF STAINLESS STEEL SLEEVE

Weld to post after galvanizing. (Prepare post surface to insure tight, uniform fit and allow welding.) Welds to be 1/2" long at 6" cts. along top edge and at 1/4" opening.

| Truss Type | Post Size | Upper & Lower Connection Bolt Diameter ③ | Lower Juncture Bolt Spacing Dimension "c" ③ | Opening in Cap Plate "HH" | Collar Thickness (t) | Side Ribs x y |
|----------------------|----------------|--|---|---------------------------|----------------------|---------------|
| I-C-A | 16" φ (83#/1) | 7/8" | 3 1/4" | 8" | 5/8" | 1 3/4" 2 1/4" |
| II-C-A | 24" φ (125#/1) | 1" | 3 1/2" | 12" | 7/8" | 2" 1 1/4" |
| III-C-A (35' max.) | 24" φ (125#/1) | 1 1/4" | 3 1/2" | 12" | 7/8" | 2" 1" |
| III-C-A (35' to 40') | 24" φ (171#/1) | 1 1/4" | 3 1/2" | 12" | 7/8" | 2" 1" |

③ Upper and lower connection bolts in collar and bolts at lower chord connection shall be high strength with matching locknuts. Connection bolts shall have 2 stainless steel flat washers each.

| NUMBER | REVISION | DATE |
|--------|----------|------|
| | | |
| | | |
| | | |
| | | |
| | | |

| REVISIONS | |
|-----------|------|
| NAME | DATE |
| | |
| | |
| | |
| | |
| | |

ILLINOIS DEPARTMENT OF TRANSPORTATION
**CANTILEVER SIGN STRUCTURES
JUNCTURE DETAILS
ALUMINUM TRUSS & STEEL POST**

SCALE: VERT. NONE
HORIZ. DATE
DRAWN BY CNH
CHECKED BY