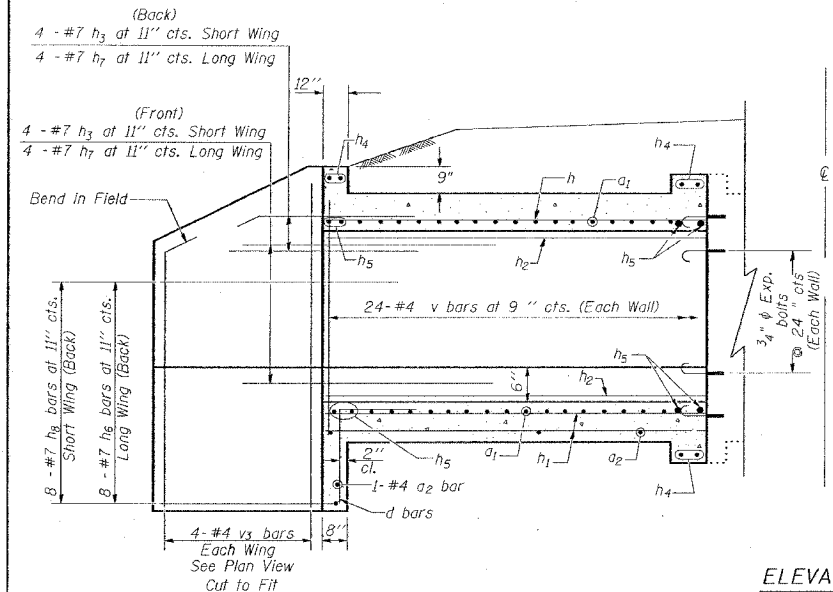
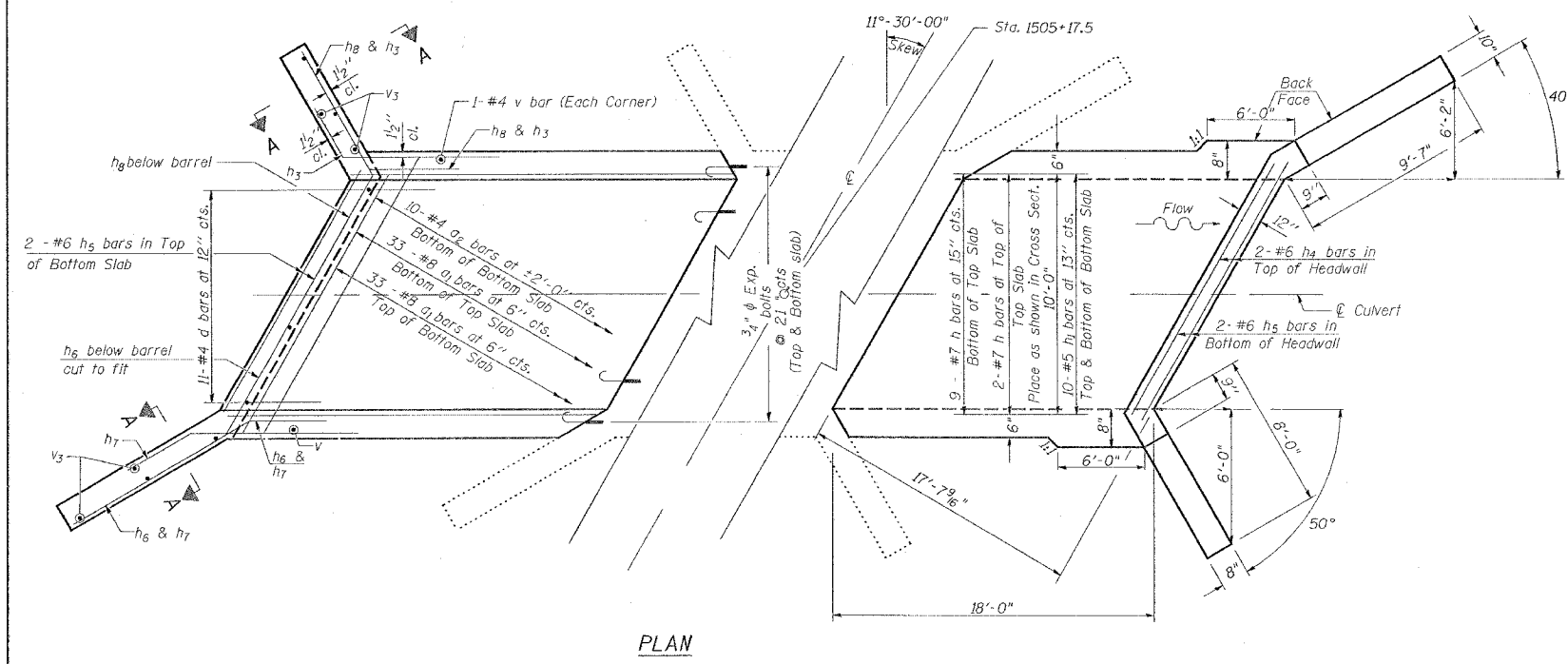
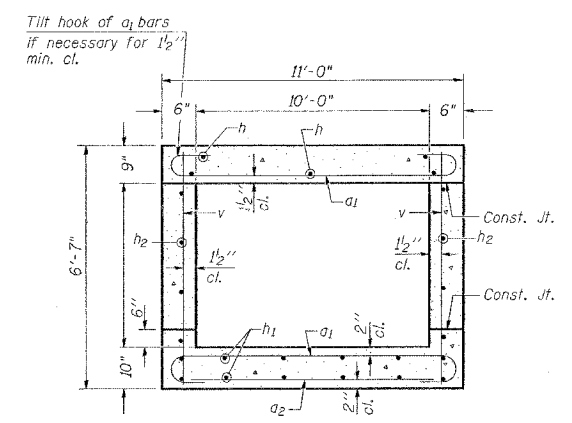
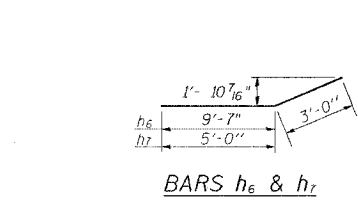
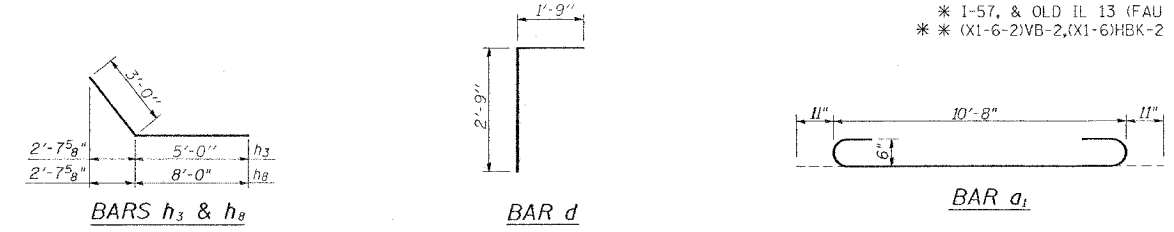
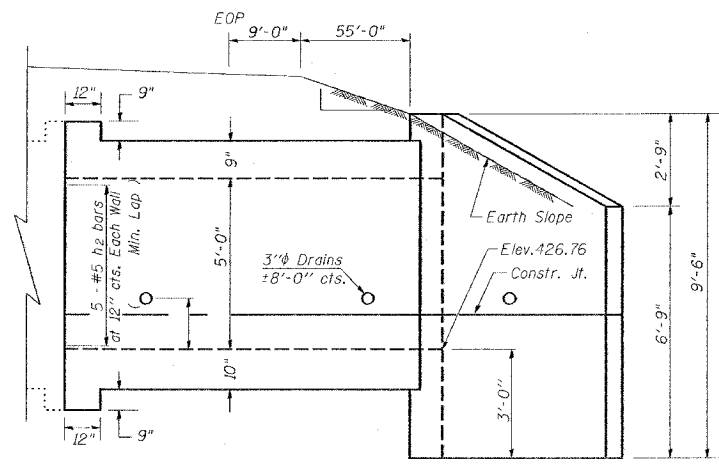


STATE OF ILLINOIS
DEPARTMENT OF TRANSPORTATION

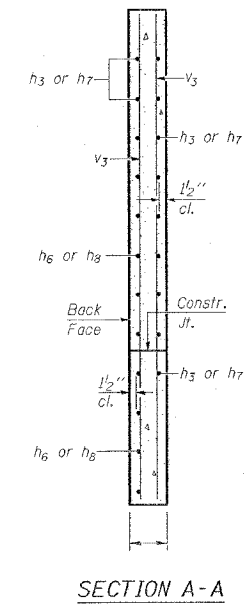
CONTRACT NO. 98950				
F.A.I. RTE.	SECTION	COUNTY	TOTAL SHEETS	SHEET NO.
*	**	WILLIAMSON	917	773
STA.		TO STA.		
FED. ROAD DIST. NO.	ILLINOIS	FED. AID PROJECT		
* 1-57, & OLD IL 13 (FAU 9629)				
** (X1-6-2)VB-2,(X1-6)HBK-2				



ELEVATION
Dimensions at Rt. L's to \bar{C} Roadway



PLAN



SECTION A-A

BILL OF MATERIAL

Bar	No.	Size	Length	Shape
a ₁	62	#8	12'-7"	
a ₂	10	#4	10'-6"	
d	11	#4	4'-6"	
h	11	#7	17'-9"	
h ₁	20	#5	17'-9"	
h ₂	10	#5	17'-9"	
h ₃	8	#7	8'-0"	
h ₄	6	#6	11'-0"	
h ₅	8	#6	11'-7"	
h ₆	8	#7	12'-7"	
h ₇	8	#7	8'-0"	
h ₈	8	#7	11'-0"	
v	48	#4	6'-3"	
v ₁	8	#4	8'-0"	
Concrete Removal Long Wingwall				Cu. Yd. 3.1
Concrete Removal Short Wingwall				Cu. Yd. 2.5
Concrete Box Culverts				Cu. Yd. 21.0
Reinforcement Bars				Pound 4,435
3/8" Expansion bolts				Each 18

NOTES

Reinforcement Bars shall conform to the requirements of AASHTO M-31, M-42 or M-53, Grade 60.
A distance of half the length of the wingwall but not less than six feet of the barrel shall be poured monolithically with the wingwalls.
All construction joints shall be bonded.
Expansion bolts shall be 3/4" ϕ x 12" hooked bolts. Hooked bolts shall extend a minimum of 9" into new concrete and have a minimum certified proof load of 4,080 lbs.
No extension to the left. Just shown for reinforcement, Information Only.

DESIGN STRESSES

$f_y = 60,000$ psi
 $f'_c = 3,500$ psi
LOADING HS 20-44 & ALT.

REVISIONS	
NAME	DATE

ILLINOIS DEPARTMENT OF TRANSPORTATION
BOX CULVERT EXTENSION
RT. STATION 1505+17.5 (SB)
10' x 5', SKEW 11°-30'-0" RT. AH.
EXTEND 18'-0"
SCALE: VERT. NO SCALE
HORIZ. DATE: DRAWN BY CNH
CHECKED BY

REVISIONS	
DATE	DESCRIPTION
10/12/2006	

BASED ON: **SSB-H-R 6-1-2000**

PLOT DATE = 10/12/2006
FILE NAME = c:\p\proj\98950\98950.dwg
USER NAME = j...
SCALE = 1/8" = 1'-0"