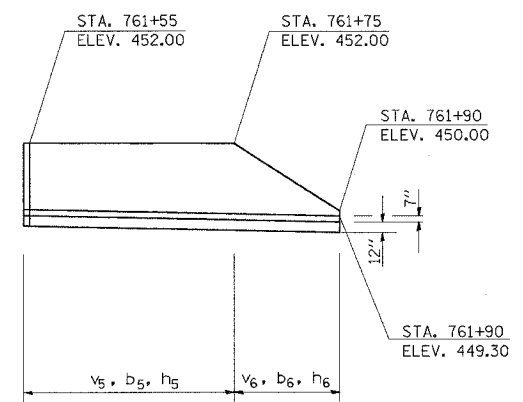
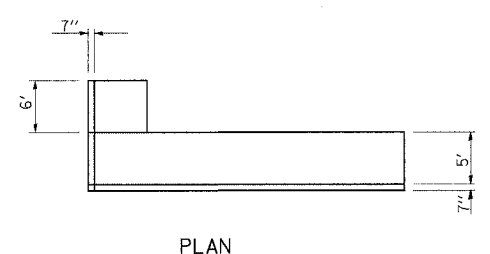
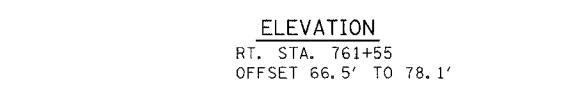
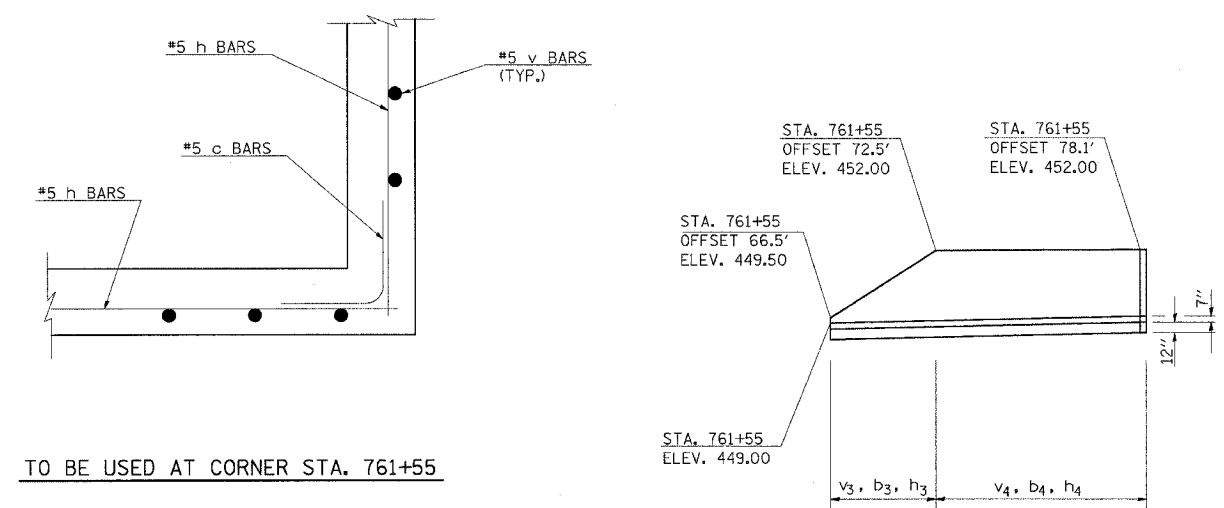


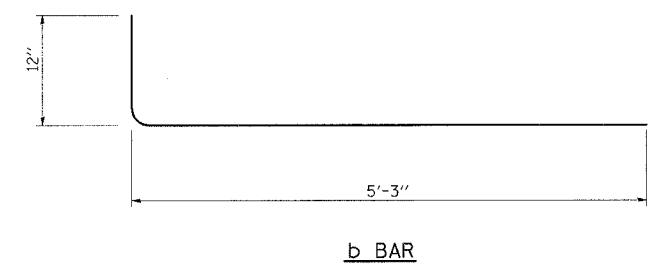
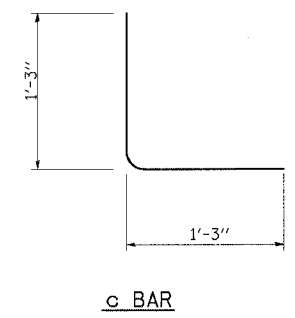
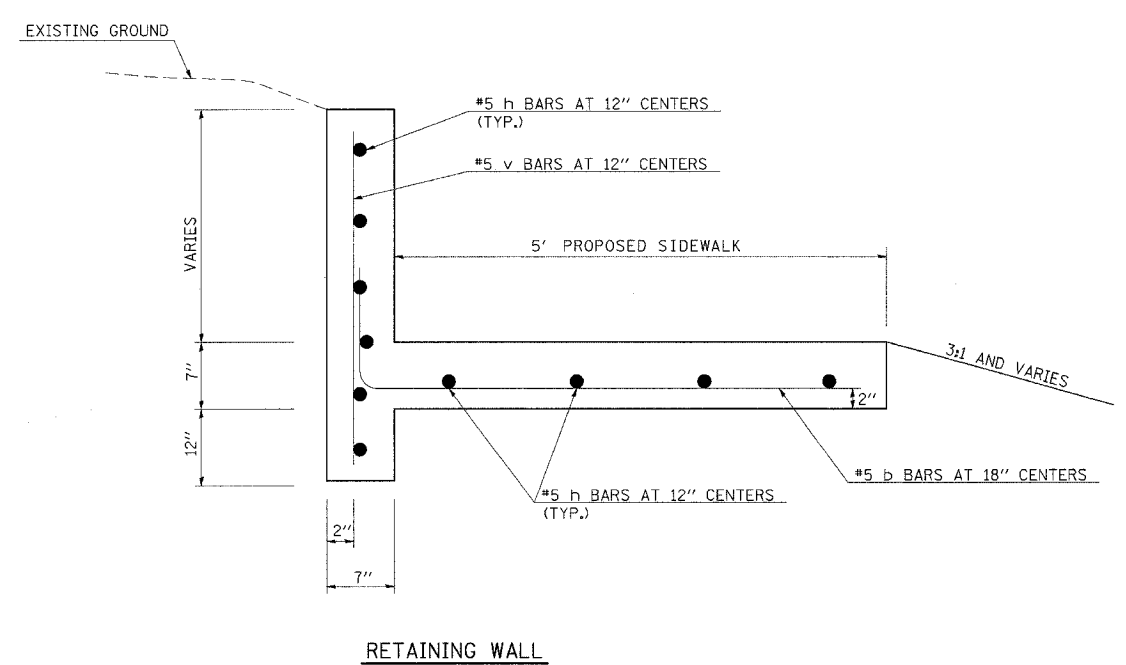
F.A. RTE.	SECTION	COUNTY	TOTAL SHEETS	SHEET NO.
*	**	WILLIAMSON	917	795
STA. TO STA.				
FED. ROAD DIST. NO. ILLINOIS FED. AID PROJECT				
* I-57, & OLD IL 13 (FAU 9629)				
** (X1-6-2)VB-2,(X1-6)HBK-2				

### RETAINING WALL DETAIL



### BILL OF MATERIALS

BAR	NO.	SIZE	LENGTH	SHAPE
c	11	#5	2.50'	L
v3	6	#5	2.87' AVG.	—
b3	4	#5	6.25'	L
h3	10	#5	7.08'	—
v4	6	#5	3.95' AVG.	—
b4	4	#5	6.25'	L
h4	11	#5	6.66'	—
v5	20	#5	3.90' AVG.	—
b5	14	#5	6.25'	L
h5	11	#5	21.08'	—
v6	15	#5	2.90' AVG.	—
b6	10	#5	6.25'	L
h6	10	#5	16.08'	—
REINFORCEMENT BARS			967	POUND
CONCRETE STRUCTURES			10.0	CU. YD.
PROTECTIVE COAT			1,220.0	SQ. YD.



REVISIONS		DATE
NAME		

ILLINOIS DEPARTMENT OF TRANSPORTATION  
**DETAIL:**  
**RETAINING WALL**  
**RT. STA. 759+15 TO STA. 761+90**

SCALE: VERT. NONE  
HORIZ. DATE  
DRAWN BY CNH  
CHECKED BY

PLOT DATE = 12/7/2006  
FILE NAME = c:\pcc\cnc\p802802\old\3\old13p3.dgn  
PLOT SCALE = 1/8" = 1'-0"  
USER NAME = hudson