

F.A. RTE.	SECTION	COUNTY	TOTAL SHEETS	SHEET NO.
*	**	WILLIAMSON	917	804

STA. TO STA.
 FED. ROAD DIST. NO. ILLINOIS FED. AID PROJECT
 * I-57, & OLD IL 13 (FAU 9629)
 ** (X1-6-2)VB-2,(X1-6)HBK-2

DETAIL OF DETECTOR LOOPS

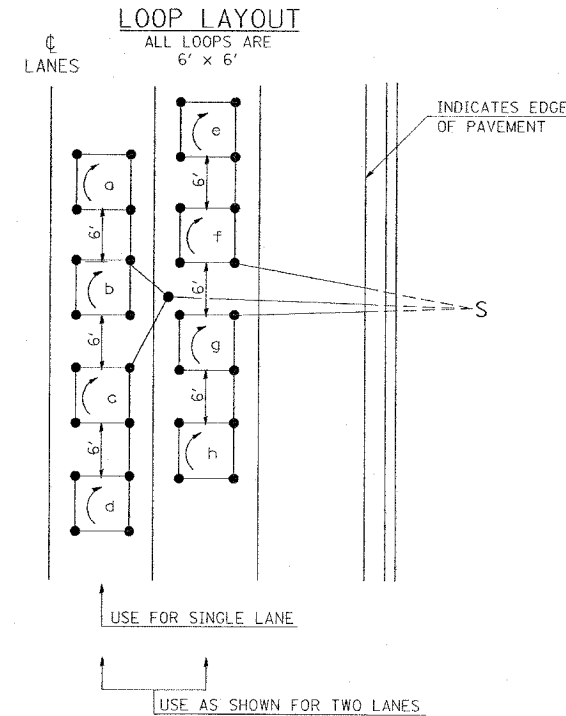
NOTES

(APPLIES TO 6' x 6' LOOPS ONLY)

- THE DETECTOR LOOPS SHALL BE TYPE I. EACH DETECTOR LOOP SHALL HAVE 3 TURNS OF LOOP WIRE AND BE INSTALLED IN ACCORDANCE WITH THE APPLICABLE PORTIONS OF SECTION 886 OF THE STANDARD SPECIFICATIONS FOR TRAFFIC CONTROL ITEMS.
- BEGINNING LEAD WIRES SHALL BE CONNECTED TO THE BLACK LEAD AND THE ENDING LEAD WIRES SHALL BE CONNECTED TO THE WHITE LEAD OF THE TWIN TWISTED FEED CABLES AT THE SPLICE POINT.
- WHERE THE LOOPS ARE INSTALLED PRIOR TO RESURFACING, THE LOOP CORNERS SHALL BE DIAGONALLY CUT.

LOOP LEGEND

- CLOCKWISE ROTATION FOR LOOP WIRES
- INDICATES SPLICE POINT FOR DETECTOR LOOP LEAD
- INDICATES 2" CORE-DRILL

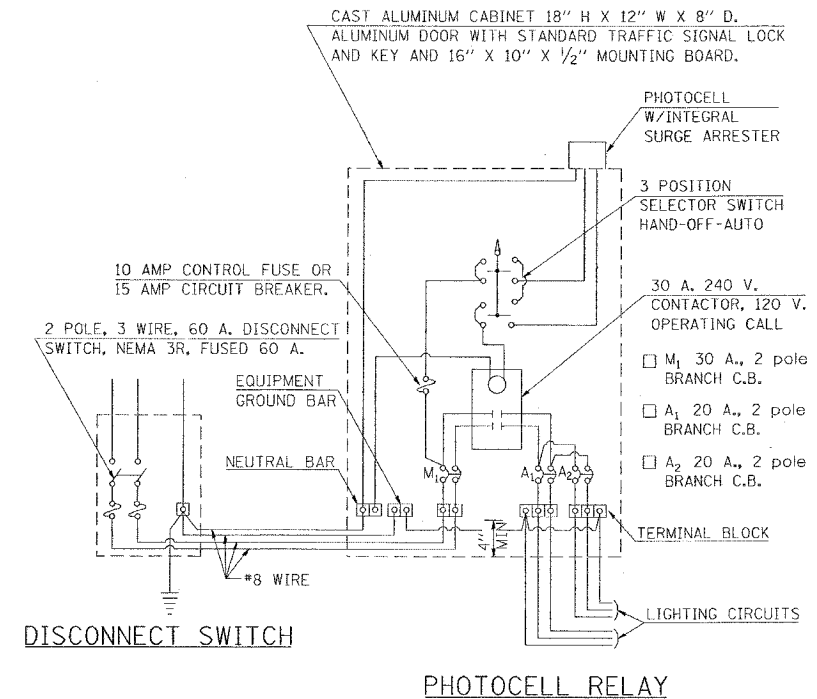


DETAIL 6' x 6' DETECTOR LOOPS

STD. 9-92

REVISIONS
REDRAWN 5-13-02
REVISED 10-26-05
REVISED
REVISED

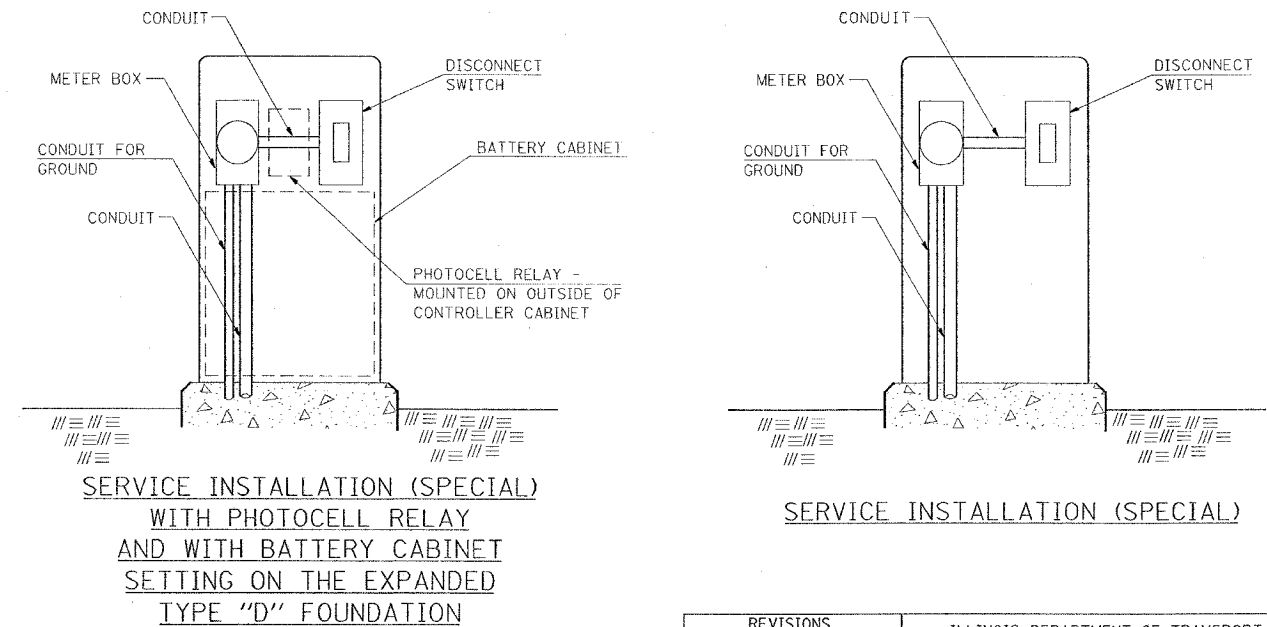
CONTROL INSTALLATION SIGNAL CABINET MOUNTED



STD. 9-113

REVISIONS
DRAWN 5-13-02
REVISED
REVISED
REVISED

SERVICE INSTALLATION DETAILS



NOTE:
 MATERIAL AND SIZE OF CONDUIT AND CABLE AS REQUIRED BY UTILITY COMPANY

STD. 9-68

REVISIONS
DRAWN 1-31-90
REVISED 12-24-92
REVISED
REVISED

REVISIONS		ILLINOIS DEPARTMENT OF TRANSPORTATION	
NAME	DATE	DETAILS:	
		DETECTOR LOOPS; CONTROL INSTALLATION SIGNAL CABINET MOUNTED; SERVICE INSTALLATION	
		SCALE: VERT. NONE HORIZ.	DRAWN BY CNH CHECKED BY JCK