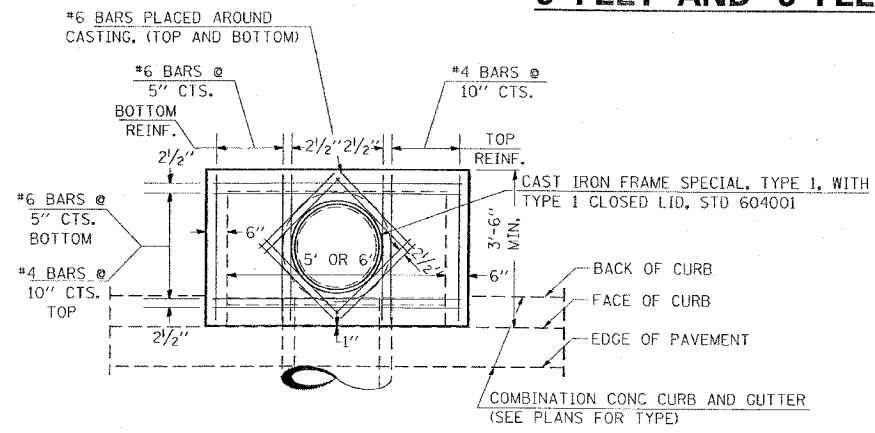


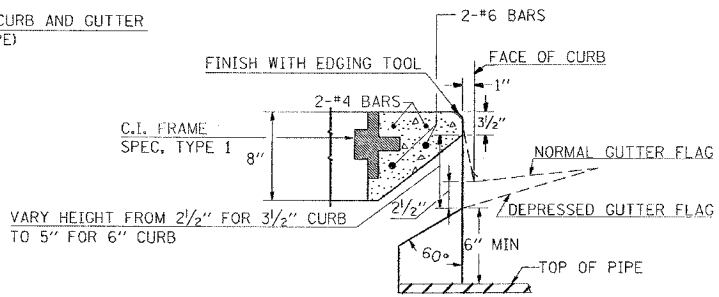
F.A. RTE.	SECTION	COUNTY	TOTAL SHEETS	SHEET NO.
*	**	WILLIAMSON	917	813

STA. TO STA.  
 ILLINOIS FED. AID PROJECT  
 \* I-57, & OLD IL 13 (FAU 9629)  
 \*\* (X1-6-2)VB-2,(X1-6)HBK-2

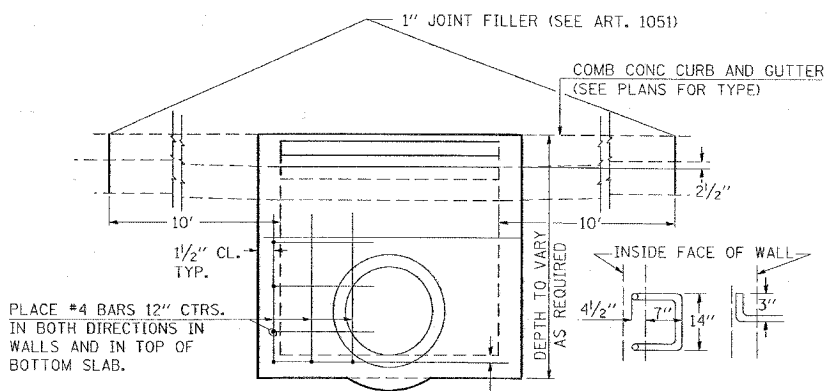
### DETAILS OF INLET SPECIAL, TYPE 3, 5 FEET AND 6 FEET



PLAN



SECTION A-A



ELEVATION

DESIGN	PIPE DIA	"D"
A	18" & LESS	2'-6"
B	21" & 24"	3'-0"
C	27" & 30"	3'-7"
D	33" & 36"	4'-2"
E	42"	4'-9"
F	48"	5'-0"
G	54"	6'-1"

**NOTES:**

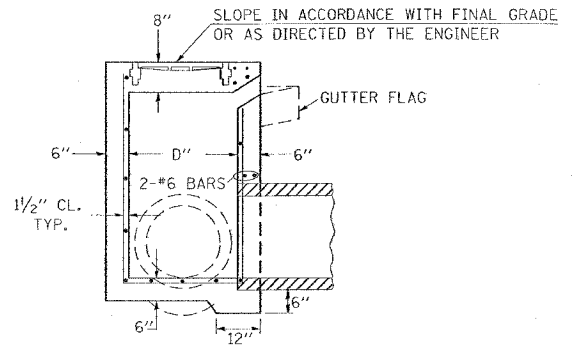
PROVIDE 1/2" CLEARANCE TYP. ALL REINFORCEMENT UNLESS OTHERWISE SPECIFIED.

CLASS SI CONCRETE SHALL BE USED THROUGHOUT. SET FACE OF INLET 1" BEHIND FACE OF CURB. DEPRESS GUTTER FLOWLINE AT INLET 2 1/2" BELOW NORMAL GUTTER FLOWLINE. CONSTRUCT TRANSITION IN FLOWLINE IN 10 FEET EACH SIDE OF INLET. PIPES TO BE CONNECTED TO INLET AS SHOWN ON STORM SEWER LAYOUT.

INLETS WILL BE PAID FOR AT THE CONTRACT UNIT PRICE EACH FOR INLET, SPECIAL, TYPE 3, 5 FEET OR INLET, SPECIAL, TYPE 3, 6 FEET WHICH PRICE SHALL INCLUDE THE CAST IRON FRAME, SPECIAL, TYPE 1 WITH TYPE 1 CLOSED LID, THE REINFORCEMENT BARS, METAL STEPS AND JOINT FILLER.

\*\*THE GALVANIZED IRON STEPS AS DETAILED HEREON ARE TYPICAL. STEPS OF OTHER DESIGN AND MATERIAL THAT WILL CONFORM TO THE MINIMUM REQUIREMENTS OF THE STEPS SHOWN, MAY BE USED WHEN APPROVED BY THE ENGINEER.

IF THE INLET IS NOT CAST IN PLACE THEN THE INLET SHALL BE PRODUCED ACCORDING TO THE DEPARTMENT'S CURRENT POLICY MEMORANDUM, "QUALITY CONTROL/QUALITY ASSURANCE PROGRAM FOR PRECAST CONCRETE PRODUCTS".



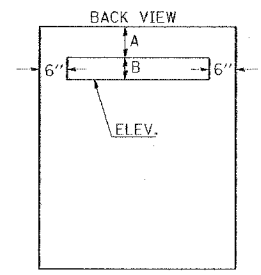
SECTION

REVISIONS

REDESIGNED	2-15-03
REVISED	8-15-04
REVISED	1-19-99
REVISED	5-6-04

STD. 9-1

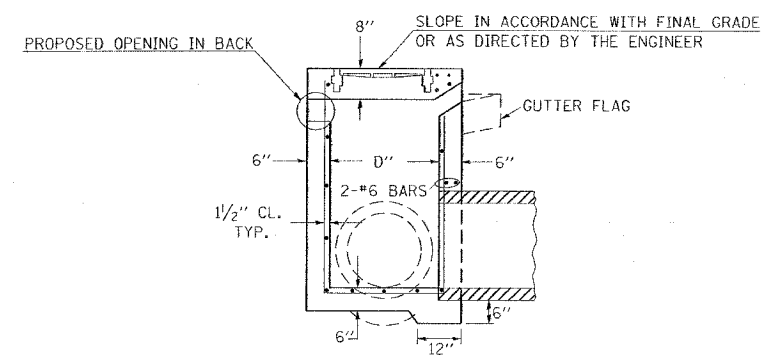
### DETAILS OF INLET SPECIAL, TYPE 3, WITH OPENING BEHIND CURB



STA.	DISTANCE A	B	ELEV.
775+60	6"	7"	447.96
776+25	6"	7"	448.20
778+00	6"	7"	449.00
779+25	6"	7"	449.60
780+50	9"	7"	450.10

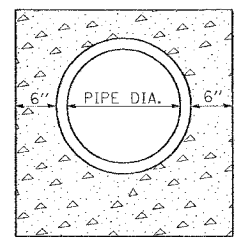
**TO BE USED:**

RT. STA. 775+60  
 RT. STA. 776+25  
 RT. STA. 778+00  
 RT. STA. 779+25  
 RT. STA. 780+50

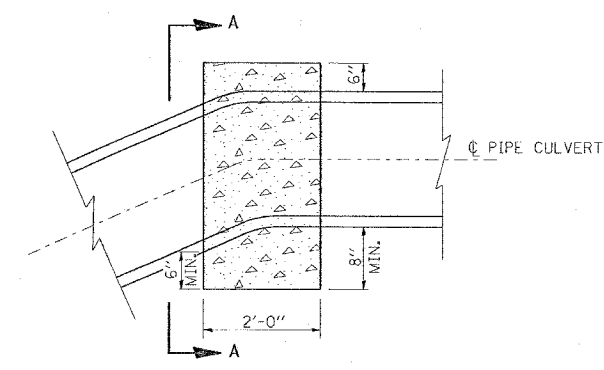


SECTION

### DETAIL OF CONCRETE THRUST BLOCK FOR CONCRETE PIPE CULVERT



SECTION A-A



CONCRETE THRUST BLOCKS SHALL BE CONSTRUCTED AND PAID FOR IN ACCORDANCE WITH ARTICLES 609.06 AND 609.07 OF THE STANDARD SPECIFICATIONS. CLASS SI CONCRETE SHALL BE USED THROUGHOUT.

REVISIONS	
NAME	DATE

ILLINOIS DEPARTMENT OF TRANSPORTATION  
**DETAILS:**  
**INLET SPECIAL, TYPE 3, 5 FEET AND 6 FEET;**  
**INLET SPECIAL, TYPE 3, WITH OPENING**  
**BEHIND CURB; CONCRETE THRUST BLOCK**  
**FOR CONCRETE PIPE CULVERT**

SCALE: VERT. NONE  
 HORIZ. DATE  
 DRAWN BY CNH  
 CHECKED BY EES

PLOT DATE = 10/14/2006  
 PLOT SCALE = 1/8" = 1'-0"  
 PLOT SIZE = 11" x 17"  
 USER NAME = hudson