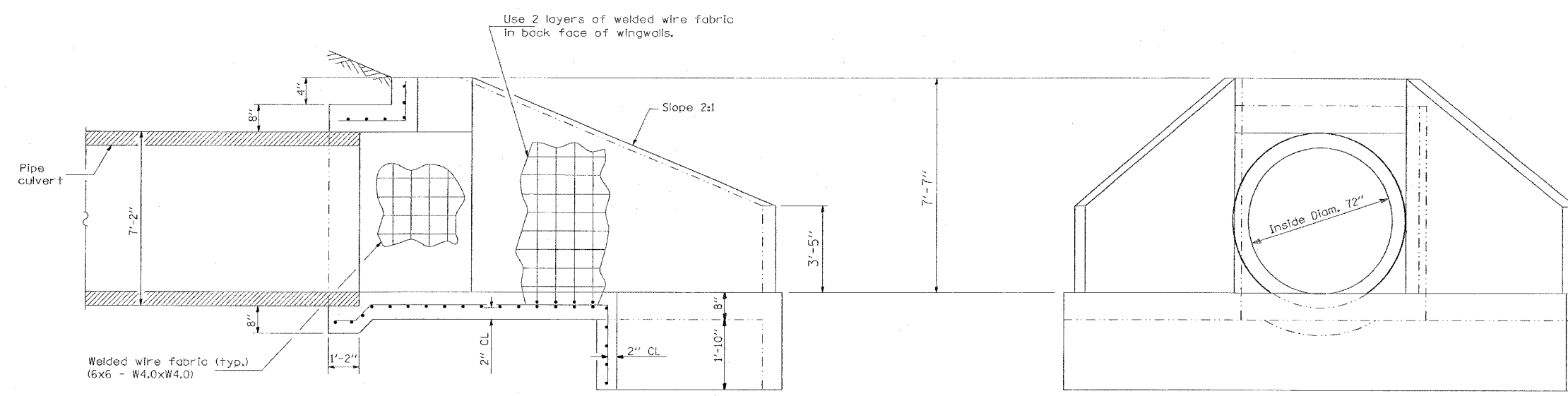


CONTRACT NO. 98950

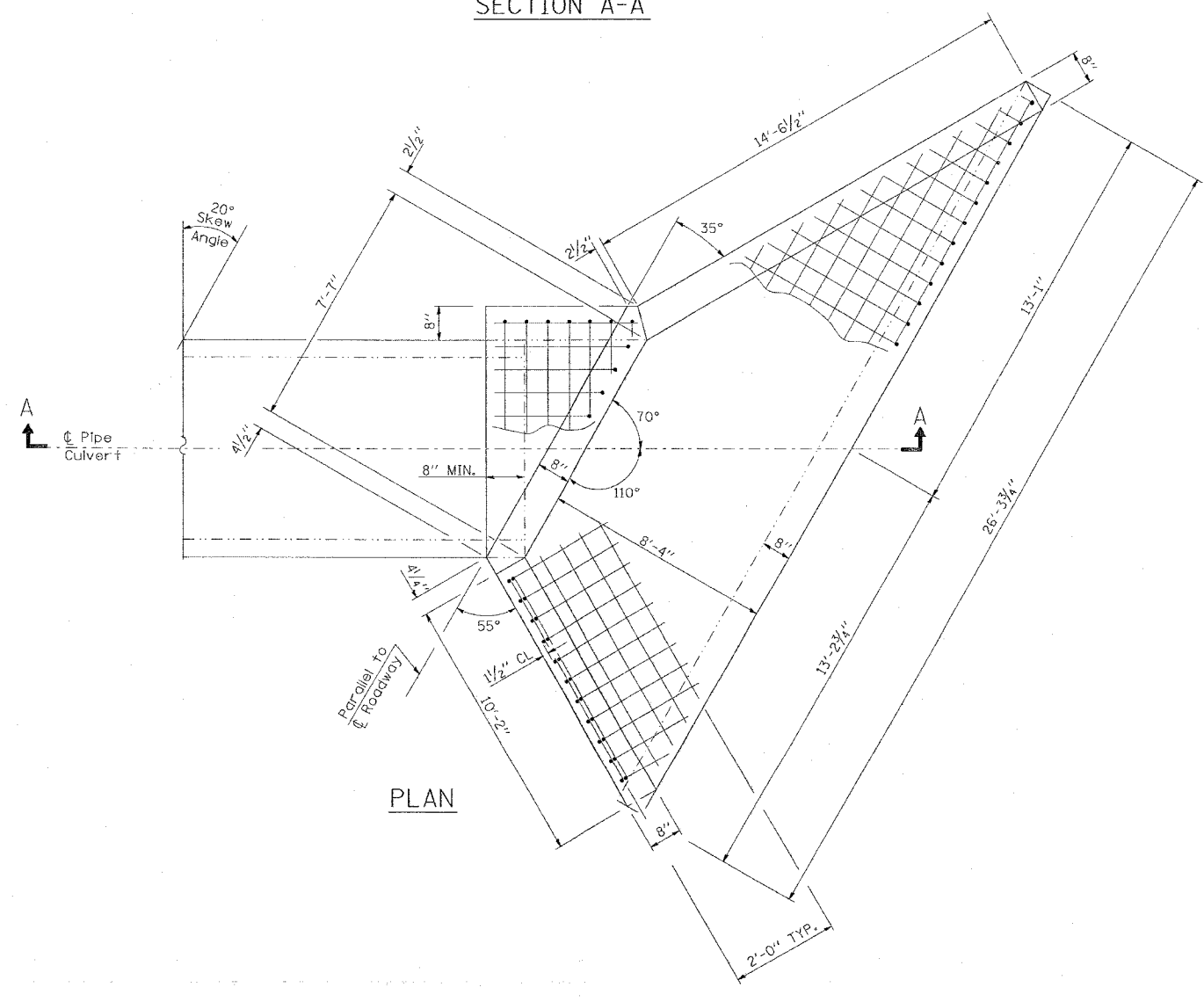
F.A. R.T.E.	SECTION	COUNTY	TOTAL SHEETS	SHEET NO.
*	**	WILLIAMSON	917	830
STA.	TO STA.			
FED. ROAD DIST. NO.	ILLINOIS	FED. AID PROJECT		

\* I-57, & OLD IL 13 (FAU 9629)  
 \* (X1-6-2)VB-2, (X1-6)HBK-2



SECTION A-A

END VIEW



PLAN

GENERAL NOTES

Build tops of headwalls parallel to grade line.

When lapping sheets of welded wire fabric, the overlap measured between the outermost cross wires of each fabric sheet shall not be less than 202 mm (8").

All slope ratios are expressed as units of vertical displacement to units of horizontal displacement (V:H).

WELDED WIRE FABRIC	59 SQ. YDS.
CONCRETE SUPERSTRUCTURE	9.5 CU. YDS.

REVISIONS	
NAME	DATE

ILLINOIS DEPARTMENT OF TRANSPORTATION  
**CAST-IN-PLACE REINFORCED CONCRETE  
 END SECTIONS 72"  
 20° SKEWED WITH ROADWAY  
 RT. & LT. STA. 1514+00**  
 SCALE: VERT. NONE  
 HORIZ. DATE  
 DRAWN BY CNH  
 CHECKED BY

PLT DATE = 10/14/2005  
 FILE NAME = c:\p\projects\98950\13\13.dwg  
 USER NAME = hudson  
 DWT SCALE = 0.2500 / IN.