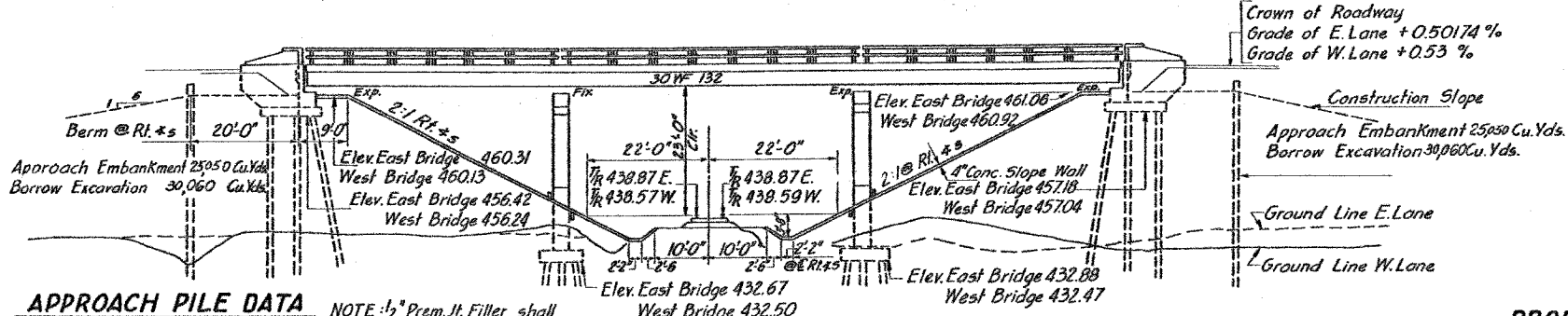


F.A. DIST.	SECTION	COUNTY	TOTAL SHEETS	SHEET NO.
*	**	WILLIAMSON	9/7	832
STA.	TO STA.			
FED. ROAD DIST. NO.	ILLINOIS FED. AID PROJECT			

STATE OF ILLINOIS
DEPARTMENT OF PUBLIC WORKS & BUILDINGS
DIVISION OF HIGHWAYS

BM : Bolt Top in R.R. Bridge 4' Rt. Sta. 1516+71 E
Elev. 438.17
No Existing Highway Structure Culvert under R.R.
at C of E. Lane to be filled in by others.

* I-57, & OLD IL 13 (FAU 9629)
* (X1-6-2)VB-2, (X1-6)HBK-2



STATION 1516+58.58
BUILT 19 BY
STATE OF ILLINOIS
F.A.R.T. 57 SEC. XI-6VB
F.A. PROJ. IG-57-1(32)
LOADING H 20-S16 & ALT.

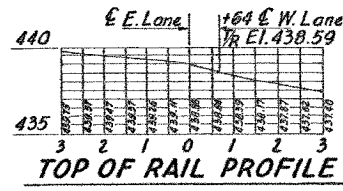
GENERAL NOTES

Class X Concrete shall be used throughout except in handrail end posts.
Handrail Concrete shall be used in handrail end posts.
The Concrete floor slab shall be finished in accordance with Article 51.19 of the Standard Specifications.
Slope wall shall be reinforced with welded wire fabric 6"x6" mesh, #4 wire, weighing 58# per 100 sq.ft.
Rivets 3/4", Open holes 1 1/8", unless noted.

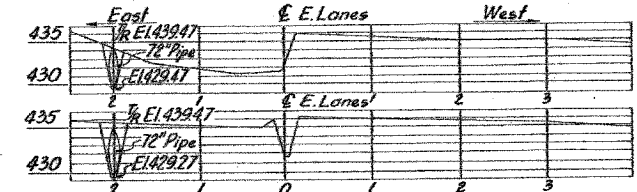
APPROACH PILE DATA
Type : Creosoted
Capacity : 15 tons
Est. Length : 40'-0"
No. Required : 32

NOTE : 1/2" Prem. Jt. Filler shall be placed between Slope wall and Abutment caps.

ELEVATION



PROFILE OF SOUTH R.R. DITCH

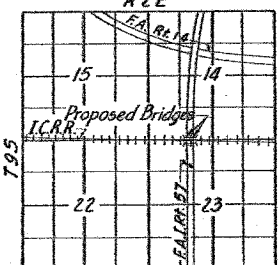
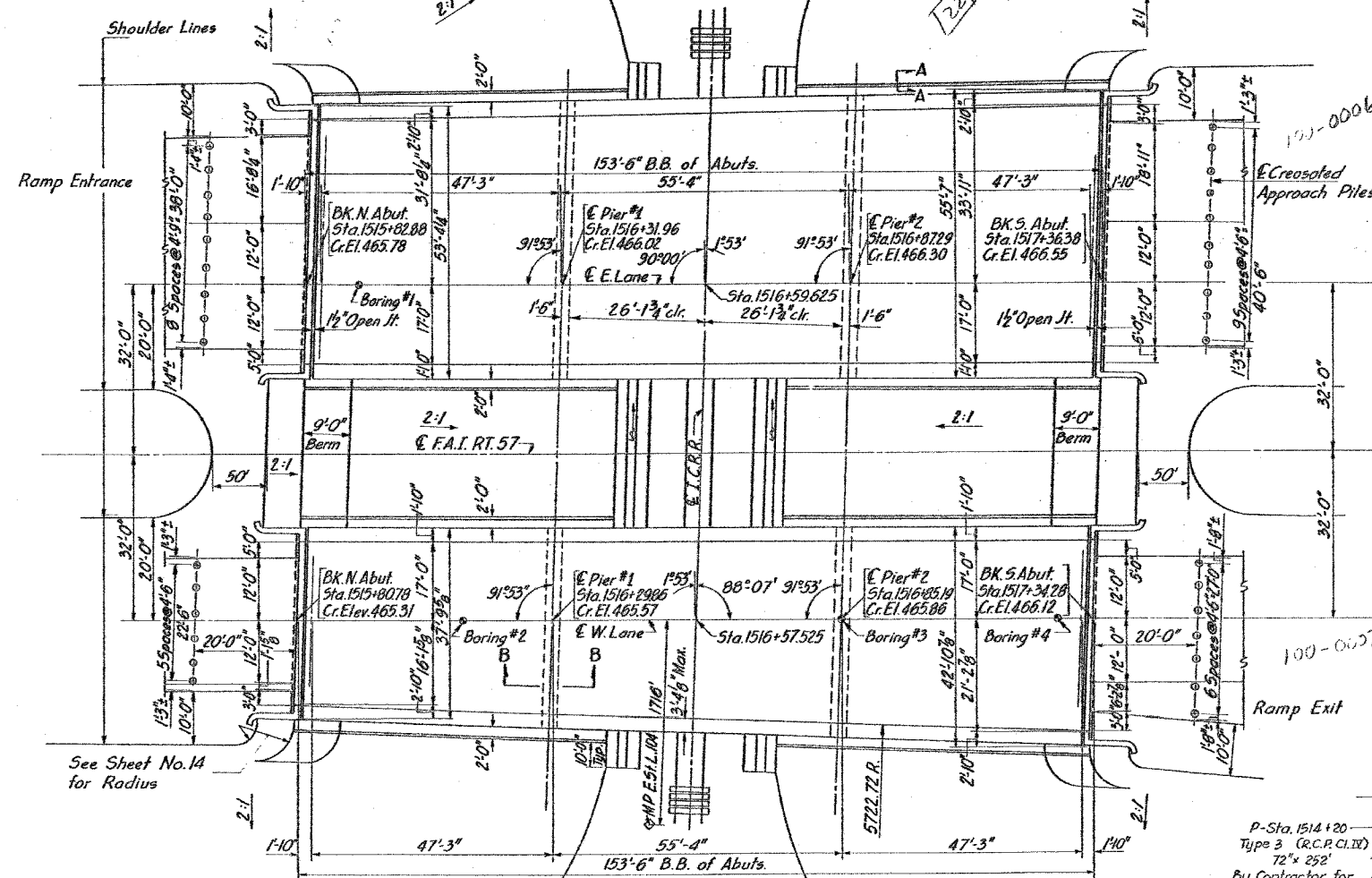
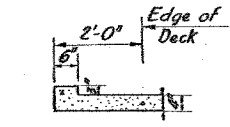


PROFILE OF NORTH R.R. DITCH

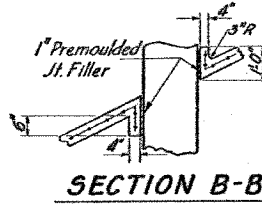
DESIGN STRESSES
fc = 1400 psi Super.
vc = 75 psi (Figs.)
fs = 20000 psi Reinf.
fs = 18,000 psi Struct.
n = 10

LOADING : H20-S16-44
And Alternate

SECTION A-A



LOCATION PLAN



SECTION B-B

TOTAL BILL OF MATERIAL

ITEM	UNIT	SUPER	SUB	TOTAL
Class X Concrete	Cu.Yds.	378.2	616.0	994.2
Handrail Concrete	Cu.Yds.	5.8		5.8
Reinforcement Bars	Lbs.	73,300	49,240	122,540
Structural Steel	Lbs.	398,960		398,960
Borrow Excavation	Cu.Yds.		50,120	50,120
Class A Excavation for Str.	Cu.Yds.		240	240
Metal Handrail	Lin.Ft.	607		607
Slope wall (4')	Sq.Yds.	925		925
Name Plates	Each	2		2
Concrete Piles	Lin.Ft.		2,257	2,257
Test Piles (Concrete)	Each		1	1
Creosoted Piles	Lin.Ft.		3170	3170
Test Piles (Timber)	Each		1	1

FOR INFORMATION ONLY

GENERAL PLAN
I.C.R.R. OVERHEAD-WEST OF MARION
PROJECT IG-57-1(32)52
F.A.I. RT. 57 - SEC. XI-6VB
WILLIAMSON COUNTY
STA. 1516+58.58

DESIGNED William A. Smith
CHECKED T. Tanka
DRAWN Gabor Papp
CHECKED T. Tanka

JAN 5 1960
EXAMINED M. Romine
PASSED
APPROVED R. B. Britton

PLAN

NOTE : All transverse deck dimensions taken at backs of abuts. on plan view @ rt. 45 to E. Rdwy.

SITE PLAN

Revised: 1-14-60 WJM - At north Abut. (in ELEVATION), changed Embankment from 4650 to 2088 Cu.Yds. & Borrow Exc. from 9980 to 2104 Cu.Yds. at south Abut. changed Embankment from 18170 to 20880 Cu.Yds. & Borrow Exc. from 21800 to 25660 Cu.Yds. In APPROACH PILE DATA, changed estimated length from 20 to 40 Lin. Ft. In TOTAL BILL OF MATERIAL, changed quantity of Borrow Exc. from 41780 to 50120 Cu.Yds. In quantity of Creosoted Piles from 2570 to 3170 Lin. Ft.

Revised - 4/2/60 R.D. Changed quantities of Class X Conc. on Bill of Material -

Quantity of Borrow Excavation Revised - 2/17/60 RSB