

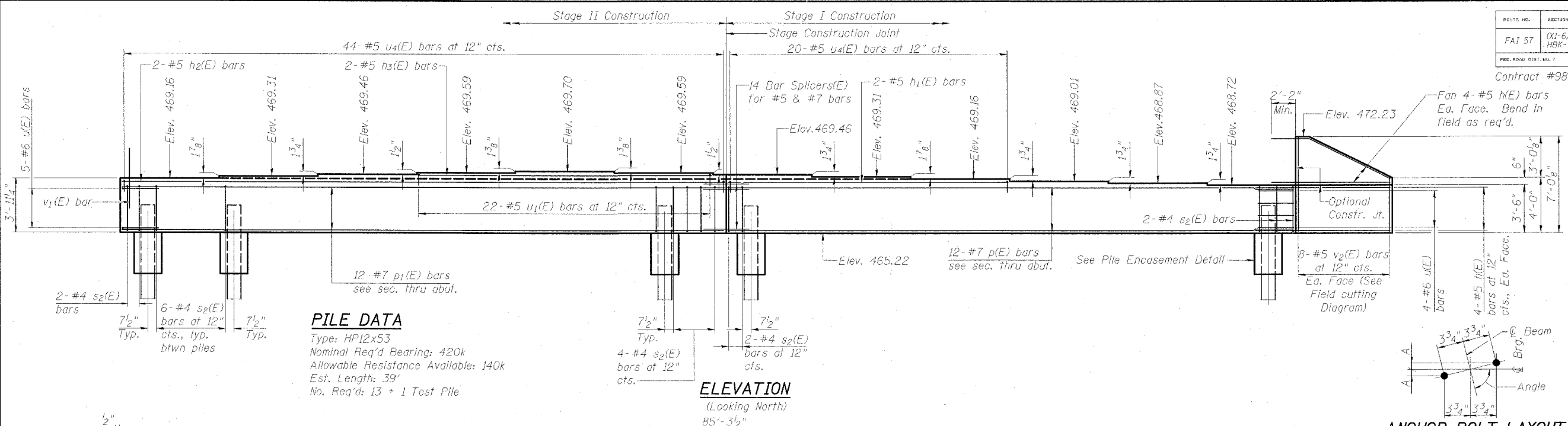
Contract #98950

**NOTES**

- Four steps monolithically with cap.
- The Steel H-Piles shall be according to AASHTO M270 Grade 50.
- The test pile shall be driven to 110 percent of the Nominal Required Bearing indicated in the pile data information.

**NORTHBOUND NORTH ABUTMENT BILL OF MATERIAL**

Bar No.	Size	Length	Shape
h(E)	#5	9'-8"	—
h <sub>1</sub> (E)	#5	19'-10"	—
h <sub>2</sub> (E)	#5	43'-7"	—
h <sub>3</sub> (E)	#5	21'-2"	—
p(E)	#7	40'-11"	—
p <sub>1</sub> (E)	#7	43'-7"	—
s <sub>2</sub> (E)	#4	11'-5"	□
u(E)	#6	7'-2"	—
u <sub>1</sub> (E)	#5	3'-0"	—
u <sub>4</sub> (E)	#5	3'-8"	—
v <sub>1</sub> (E)	#5	4'-4"	—
v <sub>2</sub> (E)	#5	10'-4"	—
Concrete Structures			Cu. Yds. 33.5
Reinforcement Bars, Epoxy Coated			Pound 4,250
Structure Excavation			Cu. Yds. 170
Furnishing Steel Piles, HPI2x53			Foot 507
Driving Piles			Foot 507
Test Pile Steel HPI2x53			Each 1
Bar Splicers			Each 14
Concrete Encasement			Cu. Yds. 4.9

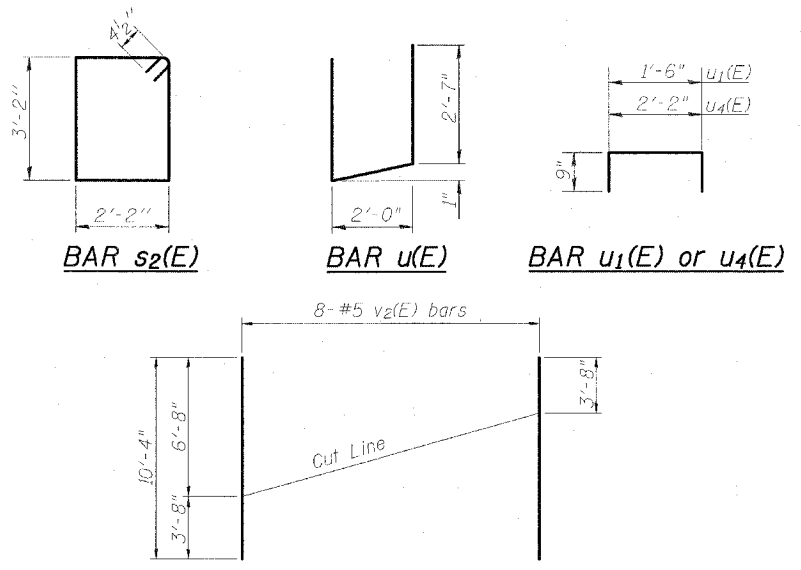
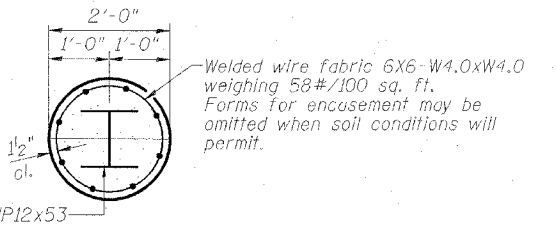
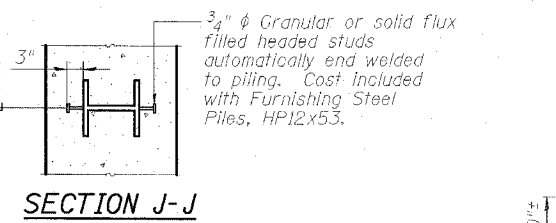
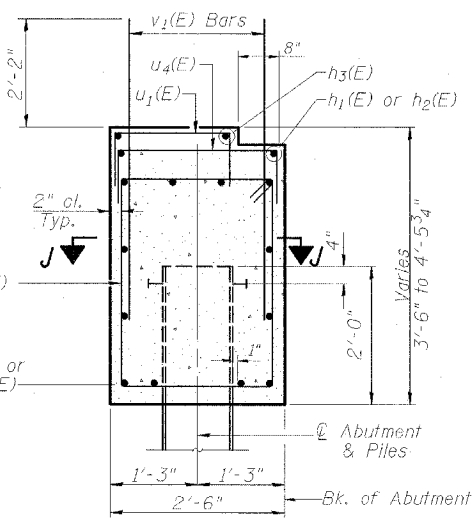
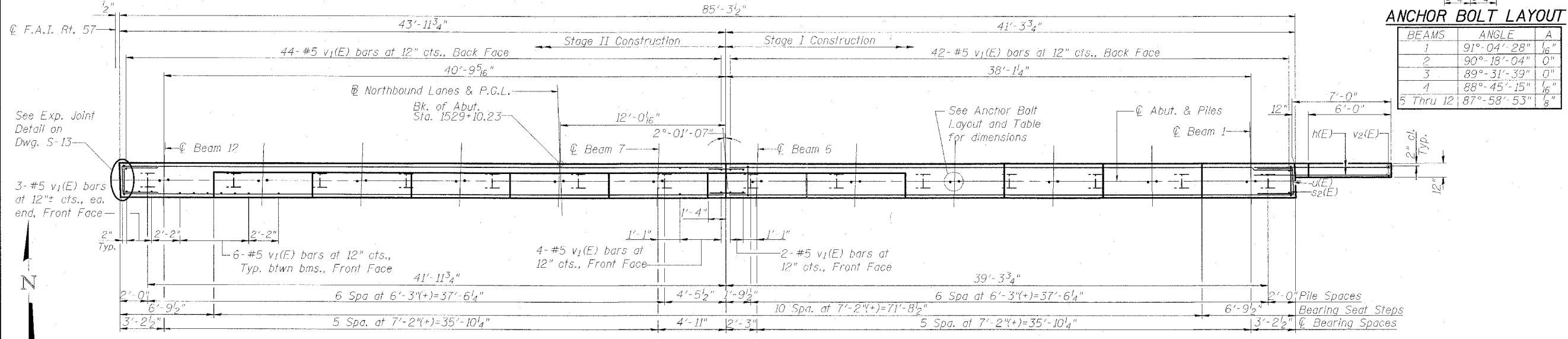


**PILE DATA**

Type: HPI2x53  
Nominal Req'd Bearing: 420k  
Allowable Resistance Available: 140k  
Est. Length: 39'  
No. Req'd: 13 + 1 Test Pile

**ANCHOR BOLT LAYOUT**

BEAMS	ANGLE	A
1	91°-04'-28"	1/6"
2	90°-18'-04"	0"
3	89°-31'-39"	0"
4	88°-45'-15"	1/6"
5 Thru 12	87°-58'-53"	1/8"



**NORTH ABUTMENT, NORTHBOUND**

INTERSTATE 57 OVER  
WEST MAIN ST. (OLD IL RT. 13)  
F.A.I. RT. 57 SEC. (X1-6)HBK-2  
WILLIAMSON COUNTY  
STATION 1529+96.11  
STRUCTURE NO. 100-0084 (N.B.)  
STRUCTURE NO. 100-0085 (S.B.)

**Clark Dietz ENGINEERS**

DESIGN FIRM REGISTRATION No. 184-000450

1817 SOUTH NEIL STREET SUITE 100 CHAMPAIGN, IL 61820 PHONE : 217.373.8900 FAX : 217.373.8923

DESIGNED BY: SMM	PROJECT NO: 102314
DRAWN BY: MEW	DATE: 05/2006
CHECKED BY: SLD	
APPROVED BY: SMM	
ACTIVITY	INITIALS