

F.A.P. RTE.	SECTION	COUNTY	TOTAL SHEETS	SHEET NO.
*	**	JEFFERSON	17	1

• 724/821  
 •• (14Z)TS-4;(14&1)RS-3

FOR INDEX OF SHEETS, SEE SHEET NO. 2  
 FOR SUMMARY OF QUANTITIES, SEE SHEET NO. 3

STATE OF ILLINOIS  
 DEPARTMENT OF TRANSPORTATION  
 DIVISION OF HIGHWAYS

**PROPOSED  
 HIGHWAY PLANS**

INTERSECTION IMPROVEMENT AND  
 TRAFFIC SIGNAL MODIFICATION

FAP 724/821 (IL 37/15 JORDAN ST)

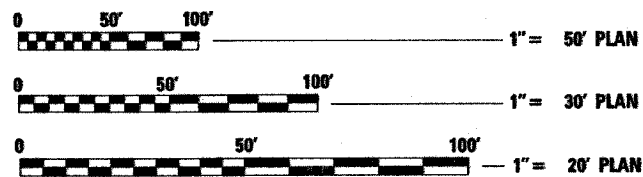
SECTION (14Z)TS-4; (14&1)RS-3

JEFFERSON COUNTY

C-99-006-07

PROJECT: HSIP-0005(540)

APPROACH	ADT (2007)	% TRUCKS
IL 37	9100	12%
BROADWAY (IL 15EB)	10100	12%

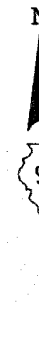
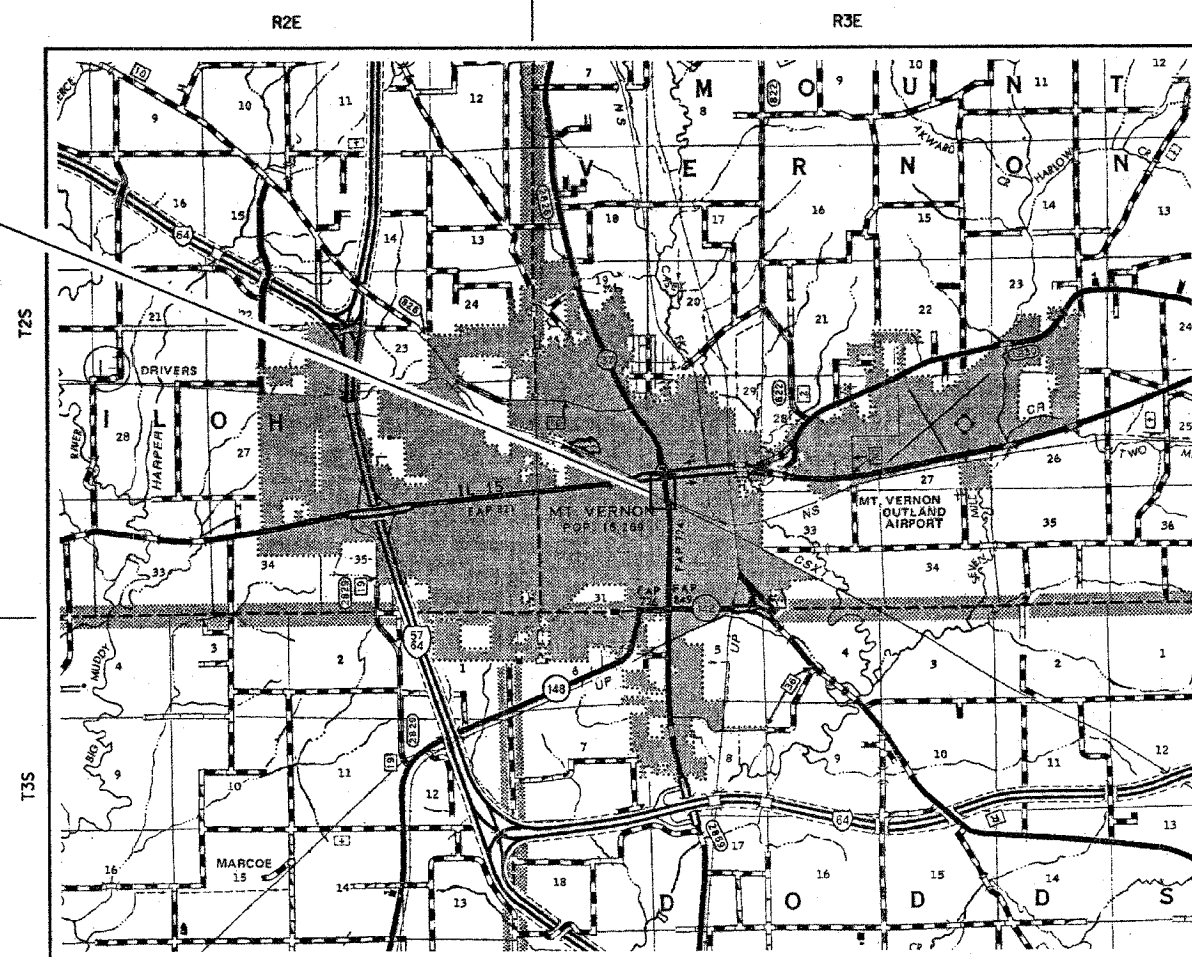


D-99-003-07



LOCATION OF SECTION INDICATED THUS: -

PROJECT LOCATION FAP 724 (IL 37)/  
 FAP 821 (IL 15/JORDAN ST)  
 INTERSECTION IMPROVEMENT AND  
 TRAFFIC SIGNAL MODIFICATION



FULL SIZE PLANS HAVE BEEN PREPARED USING STANDARD  
 ENGINEERING SCALES. REDUCED SIZED PLANS WILL NOT  
 CONFORM TO STANDARD SCALES. IN MAKING MEASUREMENTS  
 ON REDUCED PLANS, THE ABOVE SCALES MAY BE USED.

J.U.L.I.E.  
 JOINT UTILITY LOCATION INFORMATION FOR EXCAVATION  
 1-800-892-0123 or www.julietcall.com

MT VERNON TOWNSHIP  
**CONTRACT NO. 98991**

IL 37 - GROSS LENGTH OF PROJECT = 0.106 MILES, NET LENGTH OF PROJECT = 0.106 MILES  
 IL 15EB - GROSS LENGTH OF PROJECT = 0.051 MILES, NET LENGTH OF PROJECT = 0.051 MILES

STATE OF ILLINOIS  
 DEPARTMENT OF TRANSPORTATION  
 DIVISION OF HIGHWAYS

SUBMITTED Jan 10, 20 07  
M. C. Rami  
 DEPUTY DIRECTOR OF HIGHWAYS, REGION ENGINEER

March 23, 20 07  
Eric S. Harrel  
 INTERIM ENGINEER OF DESIGN AND ENVIRONMENT

March 23, 20 07  
Milton R. See, P.E.  
 DIRECTOR, DIVISION OF HIGHWAYS

**PRINTED BY THE AUTHORITY  
 OF THE STATE OF ILLINOIS**

1/29/2007  
 c:\projects\98991\98991.dwg  
 16(B) 549-2171 (3/7)  
 CENTREX 782-4554  
 PROJECT ENGINEER: SUSAN POE  
 SQAD LEADER: SUSAN POE