

F.A.P. RTE.	SECTION	COUNTY	TOTAL SHEETS	SHEET NO
*	**	JEFFERSON	17	15

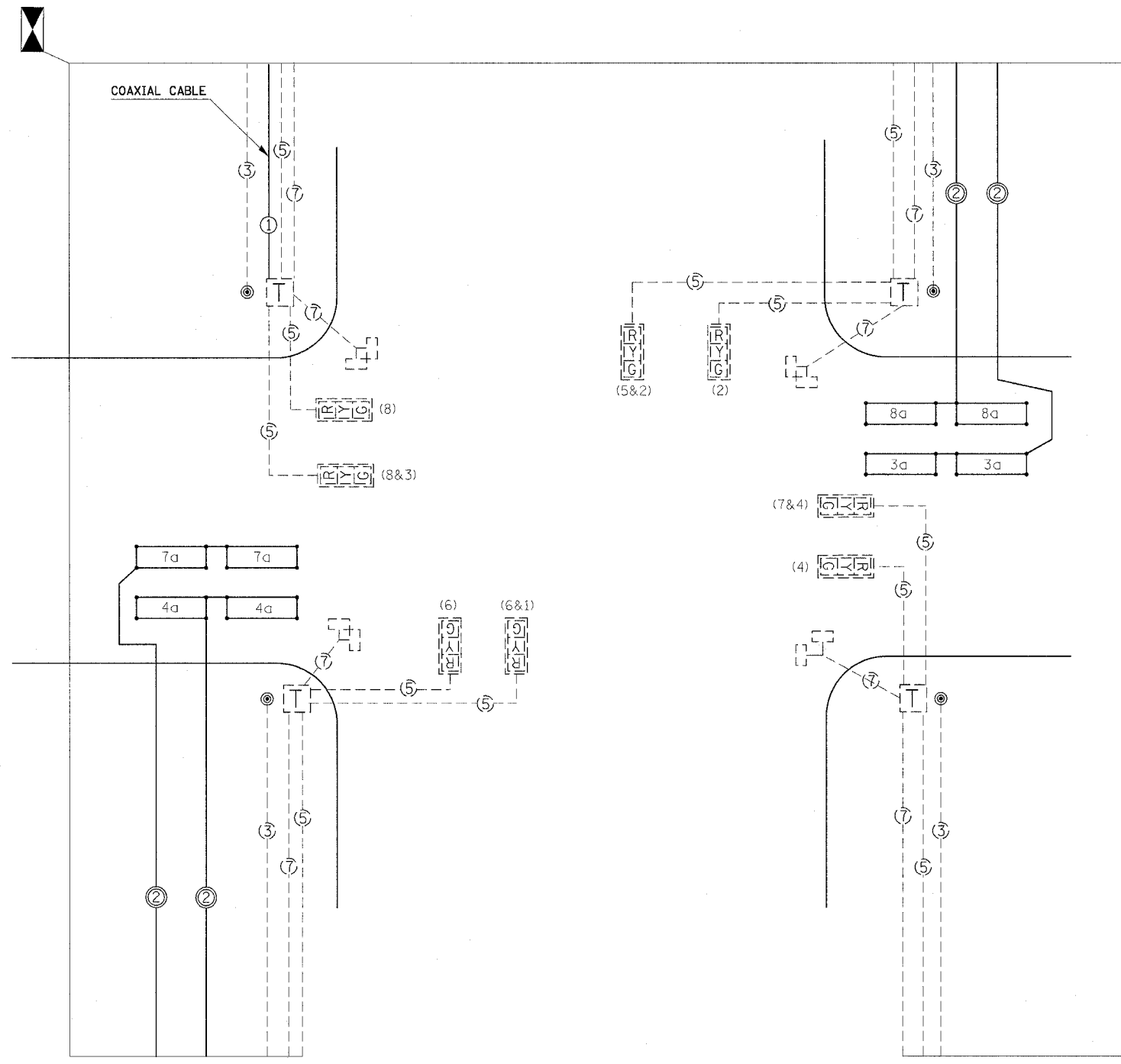
- 724/821
- ** (14Z)TS-4;(14&1)RS-3

NOTES:

1. ALL CABLES SHALL BE A.W.G. #14 UNLESS OTHERWISE NOTED.
2. THE COAXIAL CABLE IN THE NW QUAD SHALL BE USED FOR THE INSTALLATION OF THE RADIO TRANSIEVER ANTENNA MOUNTED ON TOP OF THE NW MAST ARM.
3. NOT TO SCALE

LEGEND

- [T] INDICATES EX TERMINAL BLOCK ON MAST ARM POLE
- 8a INDICATES 6' X 20' DETECTOR LOOP WITH 2" CORE DRILLED CORNERS. NUMBER INDICATES PHASE, LOWER CASE LETTER INDICATES AMPLIFIER
- ☒ EXISTING TRAFFIC SIGNAL CONTROLLER CABINET
- ② INDICATES 2/C TWISTED, SHIELDED CABLE IN CONDUIT
- ⑤ NUMBER IN CIRCLE INDICATES NUMBER OF CONDUCTORS IN THAT CABLE
- (3) NUMBER IN PARENTHESIS INDICATES PHASE
- 1a NUMBER INDICATES PHASE; LETTER OR LETTERS IDENTIFY AMPLIFIER
- [RYG] EXISTING PEDESTRIAN SIGNAL HEADS
- [RYG] EXISTING TRAFFIC SIGNAL HEADS
- ⊙ PROP PEDESTRIAN PUSH-BUTTON



1/25/2007
 C:\pwork\jordan\98991\98991.dwg
 1/25/2007
 jordan.dwg