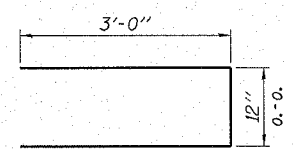


BAR a₁(E)



BAR a₂(E)

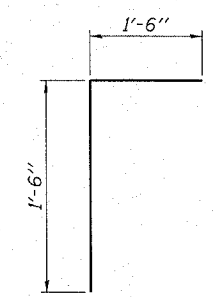
DIAPHRAGM AT ABUTMENTS

East Abut. (Looking East)
F.F. - Front Face
B.F. - Back Face

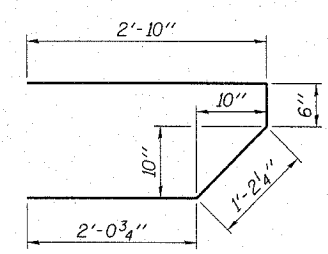
Notes: Reinforcement bars in diaphragms are billed with superstructure on sheet 5 of 14. Concrete in diaphragms is included with "Concrete Superstructure" on sheet 5 of 14. Reinforcement bars designated (E) shall be epoxy coated.

MIN. BAR LAPS

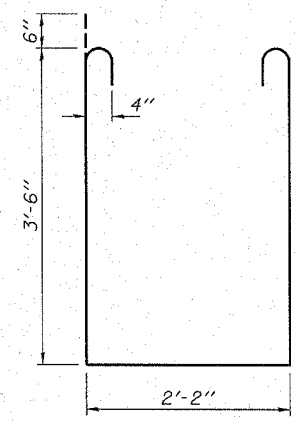
#6 bars = 2'-7"



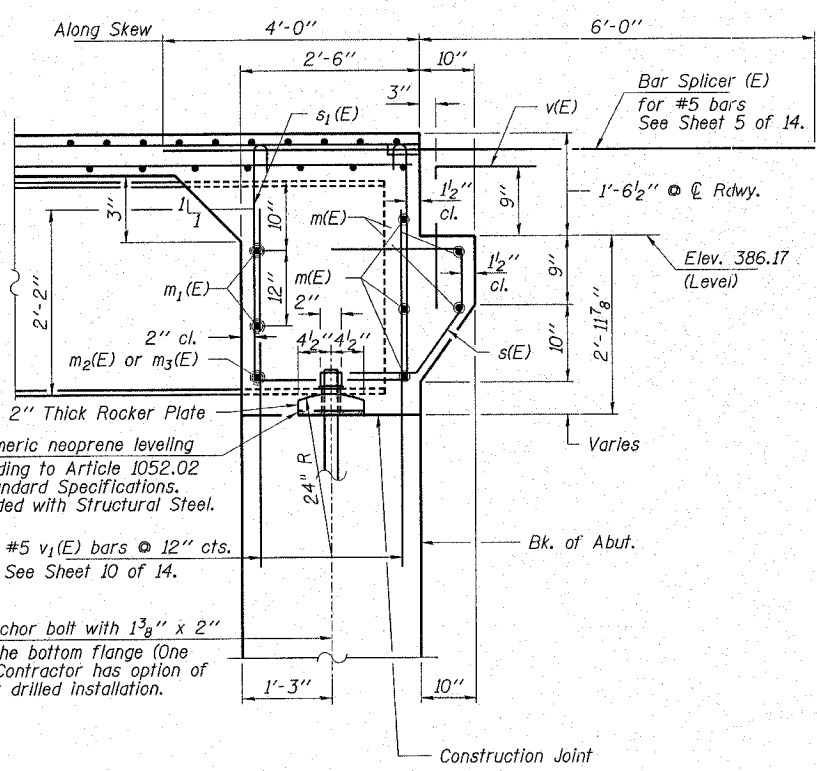
BAR v(E)



BAR s(E)

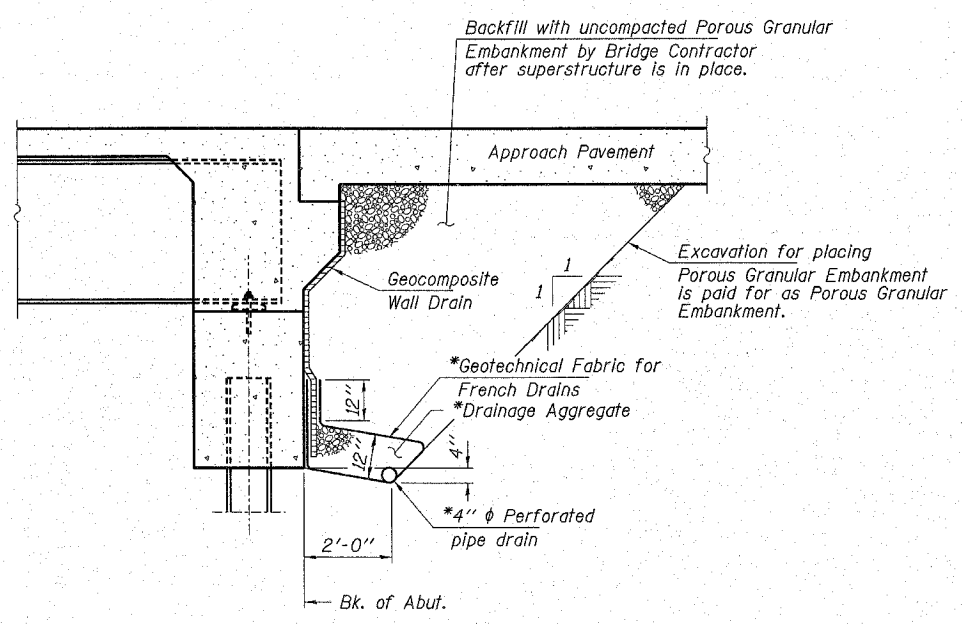


BAR s₁(E)



SECTION A-A

At Rt. L's, except as noted
** Cost Included with "Concrete Structures".



SECTION THRU INTEGRAL ABUTMENT

(Horiz. dim. @ Rt. L's)

* Included in the cost of Pipe Underdrains for Structures.

Note: All drainage system components shall extend to 2'-0" from the end of each wingwall except an outlet pipe shall extend until intersecting with the side slopes. The pipes shall drain into concrete headwalls. (See Article 601.05 of the Standard Specifications and Highway Standard 601101).

HAMPTON, LENZINI & RENWICK, INC.
CIVIL & STRUCTURAL ENGINEERS
LAND SURVEYORS

3085 STEVENSON DRIVE, SUITE 201
SPRINGFIELD, ILLINOIS 62703
(217) 546-3400

ELGIN • SPRINGFIELD

PROJECT NUMBER: 12-98-0013-1 DATE: 01/18/07
DESIGNED: M.G.B. CHECKED: S.W.M. DRAWN: D.B.

SUPERSTRUCTURE DETAILS

F.A.S. ROUTE 882
SECTION 84-00059-00-BR
WHITE COUNTY
STRUCTURE NO. 097-3186 / STATION 9+40