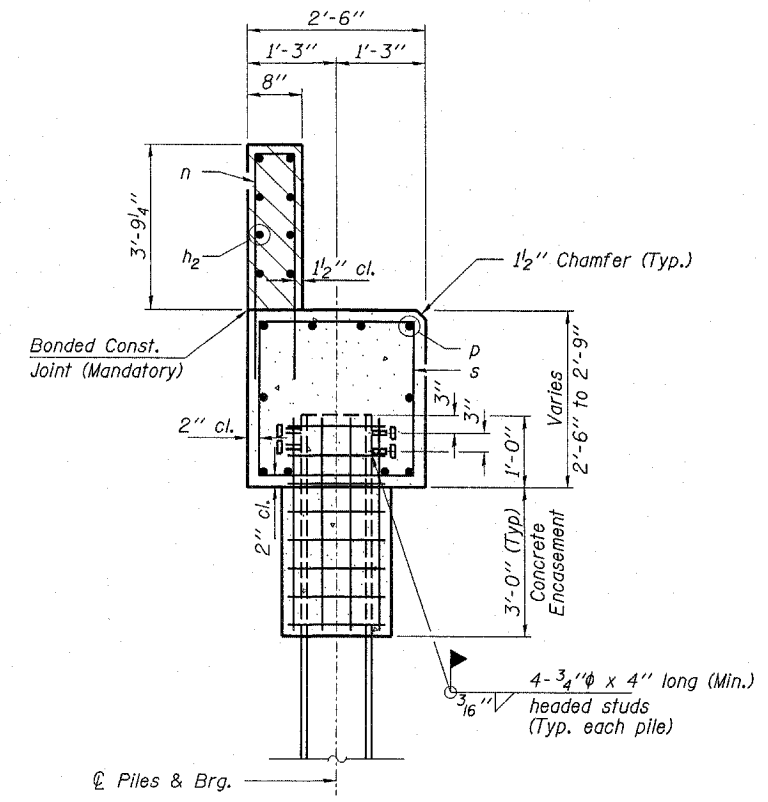
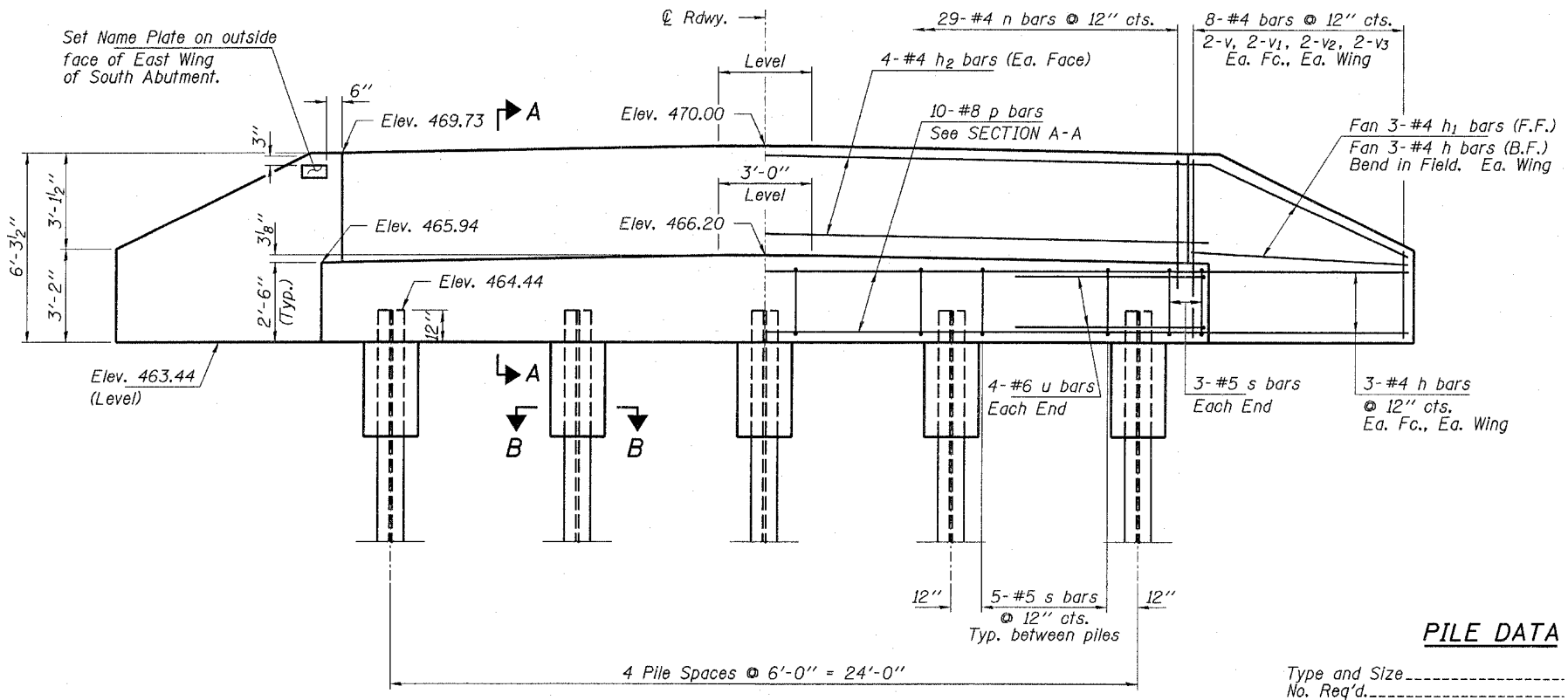
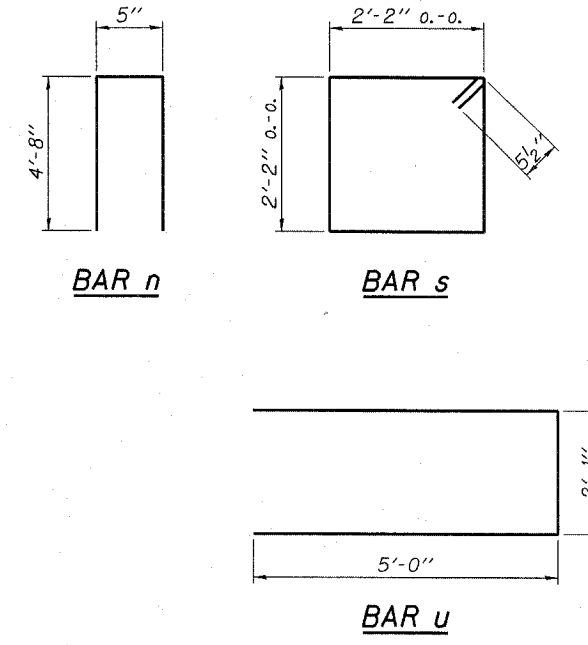


**PLAN**

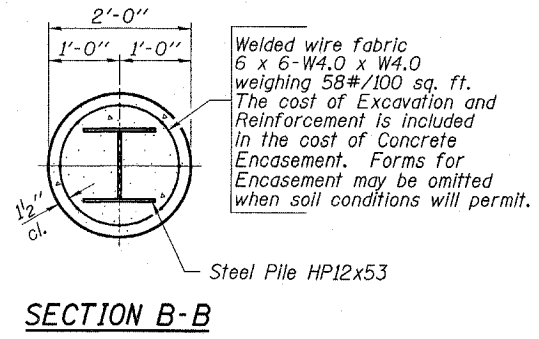


**SECTION A-A**

Hatched area to be poured after beams are in place.



**ELEVATION**



**SECTION B-B**

**PILE DATA**

Type and Size.....Steel HP12x53  
No. Req'd.....\*10  
Nominal Req'd Bearing.....418 Kips/Pile  
Allowable Resistance Available.....139 Kips/Pile  
Est. Lengths.....105 Ft/Pile (S. Abut.)  
105 Ft/Pile (N. Abut.)

Notes: The Steel H-Piles shall be according to AASHTO M270 Grade 50.  
The test pile shall be driven to 110 percent of the Nominal Required Bearing Indicated in the pile data information.  
\* Includes one test pile to be driven in a permanent location at the North Abutment.

**BILL OF MATERIAL**

BAR	NO.	SIZE	LENGTH	SHAPE
h	36	#4	8'-6"	—
h <sub>1</sub>	12	#4	7'-0"	—
h <sub>2</sub>	16	#4	29'-0"	—
n	58	#4	9'-9"	□
p	20	#8	28'-2"	—
s	52	#5	9'-7"	□
u	16	#6	12'-1"	—
v	16	#4	5'-8"	—
v <sub>1</sub>	16	#4	4'-8"	—
v <sub>2</sub>	16	#4	3'-8"	—
v <sub>3</sub>	16	#4	2'-8"	—
Concrete Structures				Cu. Yd. 24.2
Concrete Encasement				Cu. Yd. 3.4
Shear Stud Connectors				Each 40
Reinforcement Bars				Pound 3,440
Steel Piles HP12x53				Foot 945
Test Pile Steel HP12x53				Each 1
Name Plates				Each 1

**HAMPTON, LENZINI & RENWICK, INC.**  
CIVIL & STRUCTURAL ENGINEERS  
LAND SURVEYORS  
3085 STEVENSON DRIVE, SUITE 201  
SPRINGFIELD, ILLINOIS 62703  
(217) 546-3400  
ELGIN • SPRINGFIELD  
PROJECT NUMBER: 12-49-0007-1 DATE: 01/12/07  
DESIGNED: R.J.P. CHECKED: S.W.M. DRAWN: D.T.M.

**ABUTMENTS**  
SECTION 95-00158-00-BR  
C.H. 3 / F.A.S. 789  
JEFFERSON COUNTY  
STRUCTURE NO. 041-3736 / STATION 20+00