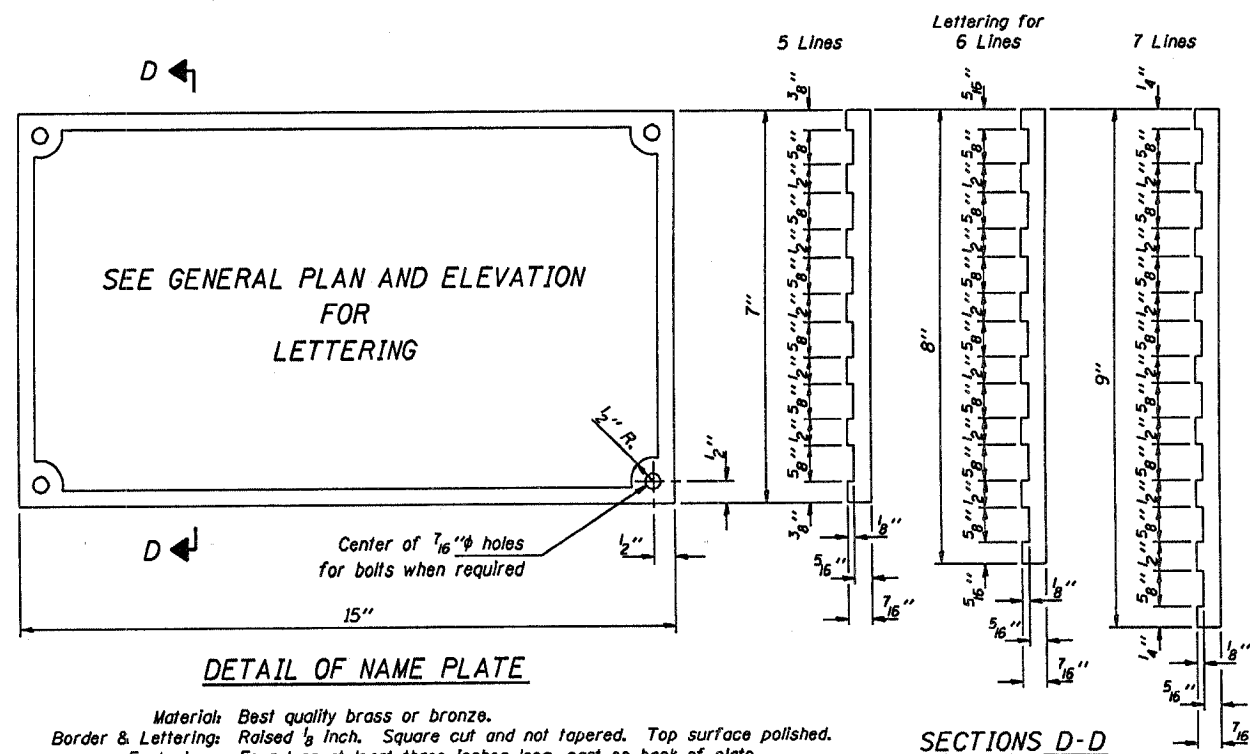
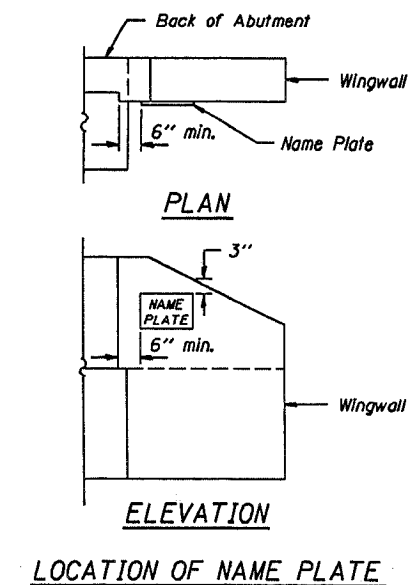


ROUTE	SECTION	COUNTY	TOT. SHTS.	SHT.
FAS 789	95-00158-00-BR	JEFFERSON	12	8
JEFFERSON COUNTY				

CONTRACT 99286



Material: Best quality brass or bronze.  
 Border & Lettering: Raised  $\frac{1}{8}$  inch. Square cut and not tapered. Top surface polished.  
 Fastenings: Four lugs at least three inches long, cast on back of plate.



Illinois Department of Transportation

PASSED APRIL 4, 2005

*Thomas S. Demagala*  
 Engineer of Design

APPROVED APRIL 4, 2005

*Ralph E. Anderson*  
 Engineer of Bridges and Structures

ISSUED 7-1-2005

NAME PLATE  
 STANDARD CN