

ROUTE	SECTION	COUNTY	TOT. SHTS.	SHT.
FAS 836	05-00188-00-RS	JEFFERSON	2	1
JEFFERSON COUNTY				

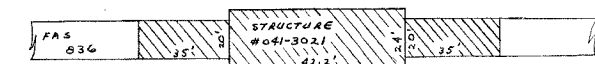
CONTRACT 99291

STATE OF ILLINOIS DEPARTMENT OF TRANSPORTATION

INDEX OF SHEETS

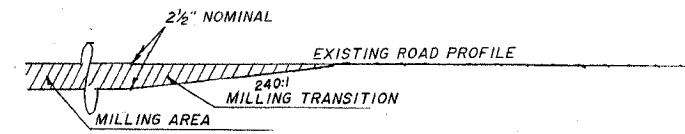
1. COVER SHEET, LOCATION MAP, SCHEDULE OF QUANTITIES
2. GENERAL NOTES, TYPICAL EXISTING AND PROPOSED CROSS-SECTIONS, HOT-MIX ASPHALT BREAKDOWN, STRIPING, DETAILS OF SIDE ROADS, PRIVATE ENTRANCES AND MAILBOX TURNOUTS

MILLING AREA DETAIL



MILLING AREA

PLAN VIEW



PROFILE

PLANS FOR PROPOSED FEDERAL AID SECONDARY PROJECT

F.A.S. 836 C.H.35 JEFFERSON CO. SECTION 05-00188-00-RS PROJECT#ACRS-836 (113)

JOB #C-99-574-06

STANDARDS

- 000001-04
- 442201-02
- 630001-07
- 630101-07
- 701006-02
- 701306-01
- 701311-02
- 701336-04
- 702001-06
- 780001-01
- B.L.R. 21-6
- B.L.R. 22-4

SCHEDULE OF QUANTITIES			
Quantity	Unit	Item	Code Number
1215	FOOT	SHORT-TERM PAVEMENT MARKING REMOVAL	XK021140
1	EACH	SOLAR-POWERED FLASHING BEACON ASSEMBLY (COMPLETE)	EX005938
2.68	SQ. YD.	COLD MILLING	20010700
750	FEET	RUMBLE STRIP	20055400
155	TON	AGGREGATE SURFACE COURSE, TYPE B	40200800
2790	GALLON	BITUMINOUS MATERIALS (PRIME COAT)	40600100
1630	TON	LEVELING BINDER (MACHINE METHOD), B50	40600625
2977	TON	HOT-MIX ASPHALT SURFACE COURSE, MIX "C", N5C	44201797
106	SQ. YD.	CLASS D PATCHES, TYPE III, 9 INCH	44201759
401	SQ. YD.	CLASS D PATCHES, TYPE IV, 9 INCH	44300300
26998	SQ. YD.	AREA REFLECTIVE CRACK CONTROL TREATMENT, SYSTEM A	48101200
790	TON	AGGREGATE SHOULDERS, TYPE B	63000000
288	FOOT	STEEL PLATE BEAM GUARDRAIL, TYPE A	63000025
75	FOOT	STEEL PLATE BEAM GUARDRAIL, TYPE B	63100167
25	FOOT	TRAFFIC BARRIER TERMINAL TYPE 1, SPECIAL (TANGENT)	67100100
1	L. SUM	MOBILIZATION	70100460
1	L. SUM	TRAFFIC CONTROL AND PROTECTION, STANDARD T01306	70100600
1	L. SUM	TRAFFIC CONTROL AND PROTECTION, STANDARD T01336	70300100
2430	FOOT	SHORT-TERM PAVEMENT MARKING	78000200
38901	FOOT	THERMOPLASTIC PAVEMENT MARKING	78201000
4	EACH	TERMINAL MARKER-DIRECT APPLIED	

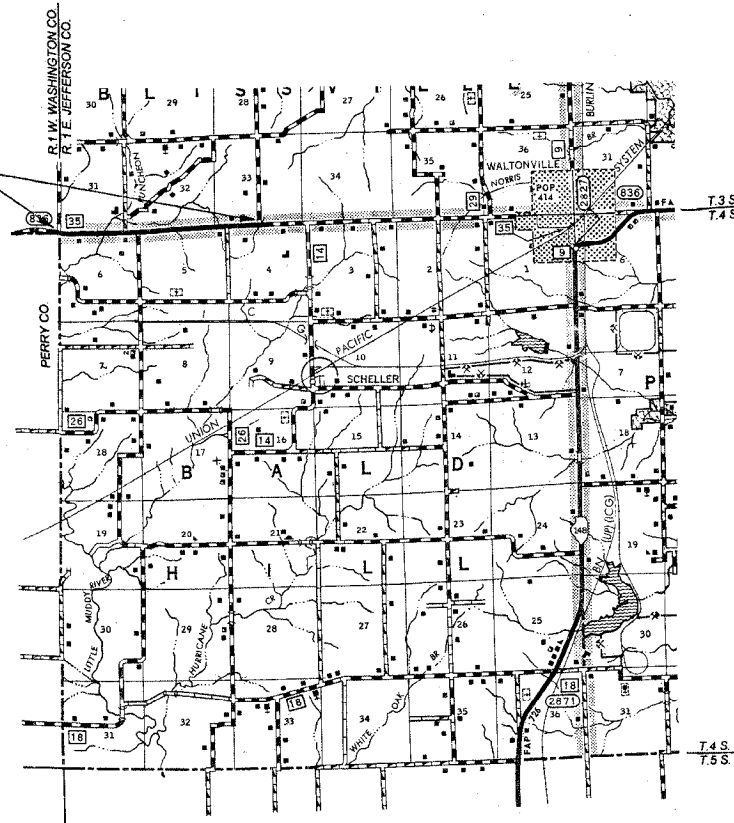
* SPECIALTY ITEMS

GUARDRAIL SCHEDULE	
STEEL PLATE BEAM GUARDRAIL TYPE A	
STA. 55+75 TO STA. 57+50 LT.	
STA. 57+00 TO STA. 58+12.5 RT.	
STEEL PLATE BEAM GUARDRAIL TYPE B	
STA. 94+93.75 TO STA. 95+18.75 LT.	
STA. 95+31.25 TO STA. 95+43.75 LT.	
STA. 95+06.25 TO STA. 95+18.75 RT.	
STA. 95+31.25 TO STA. 95+56.25 RT.	
STEEL PLATE BEAM GUARDRAIL ATTACHED TO STRUCTURES	
STA. 95+18.75 TO 95+31.25 LT.	
STA. 95+18.75 TO 95+31.25 RT.	
TRAFFIC BARRIER TERMINAL TYPE 1, SPECIAL (TANGENT)	
STA. 57+50 TO STA. 58+00 LT.	
STA. 56+50 TO STA. 57+00 RT.	
STA. 95+43.75 TO STA. 95+93.75 LT.	
STA. 94+56.25 TO STA. 95+06.25 RT.	

FUNCTIONAL CLASSIFICATION=LOCAL ROAD
DESIGN SPEED=50 MPH
ADT=600

J.U.L.I.E.
JOINT UTILITY LOCATING
INFORMATION FOR EXCAVATION
1-800-892-0123
WWW.ILLINOIS1CALL.COM

TOTAL SECTION LENGTH=12,149'=2.301 MI.
OMISSION=0.00'
NET LENGTH=12,149'=2.301 MI.



APPROVED JANUARY 15, 2007

John S. Schwaibe
COUNTY ENGINEER
JEFFERSON COUNTY HIGHWAY DEPT.
750 OLD FAIRFIELD RD.
MT. VERNON, IL 62864
PH (618)244-8031
LICENSE EXP. 11-30-07

PASSED JANUARY 24, 2007

Dennis W. Hill
DISTRICT NINE ENGINEER OF
LOCAL ROADS AND STREETS

Releasing for
bid based on
limited review Jan 25, 2007

May O'Amis
DEPUTY DIRECTOR OF HIGHWAYS
REGION FIVE ENGINEER

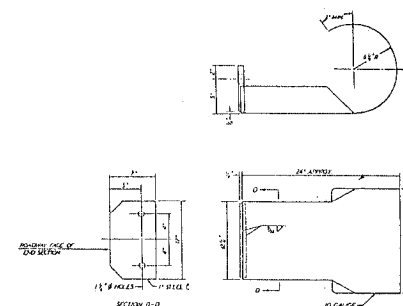
STATE OF ILLINOIS
DEPARTMENT OF TRANSPORTATION

STRIPING SCHEDULE			
NO PASSING ZONES		CENTERLINE	EDGE LINE
EASTBOUND	WESTBOUND		
0+00 TO 10+83	0+00 TO 21+07	10+63 TO 46+71	0+00 TO 121+49
32+00 TO 39+88	39+70 TO 47+88	47+88 TO 75+26	PLACE EDGELINES
46+71 TO 53+60	55+42 TO 62+41	109+30 TO 121+49	4" FROM EDGE OF
68+00 TO 109+30	75+26 TO 120+18		SURFACE AND OMIT
			AT SIDE ROADS (5)
TOTAL 6670'	TOTAL 6316'		
TOTAL 12,986'		TOTAL 1,892'	TOTAL 24,023'
TOTAL 38,901'			

HOT-MIX ASPHALT BREAKDOWN	
MATERIAL PURPOSE	TONS
RESURFACING	4,347
SIDEROADS, INTERSECTIONS, P.E., F.E.	260
TOTAL	4607

CONVERSION FACTOR=112 LBS./SQ. YD./INCH

CURLED END SECTION DETAIL



GENERAL NOTES

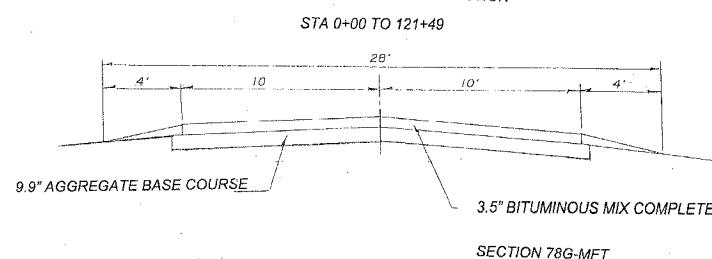
THIS SECTION SHALL CONSIST OF HOT-MIX ASPHALT SURFACE COURSE MIX "C" N50, WITH AREA REFLECTIVE CRACK CONTROL TREATMENT, AGGREGATE SHOULDERS, STRIPING, RESURFACING OF DRIVES, FIELD ENTRANCES, ROAD INTERSECTIONS AND MAILBOX TURNOUTS. ALL WORK SHALL BE IN ACCORDANCE WITH THE PLANS, SPECIAL PROVISIONS, AND THE STANDARD SPECIFICATIONS FOR ROAD AND BRIDGE CONSTRUCTION ADOPTED JANUARY 1, 2007 BY THE ILLINOIS DEPARTMENT OF TRANSPORTATION, RECURRING SPECIAL PROVISIONS, AND THE SPECIAL PROVISIONS.

THE EXISTING GRADE, DRAINAGE STRUCTURES, ALIGNMENT, BASE AND SURFACE WERE CONSTRUCTED UNDER SECTION 78-G.

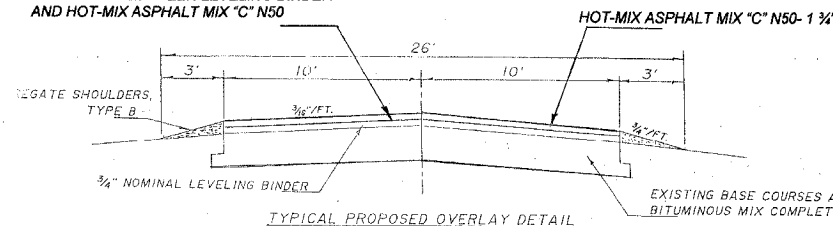
ALL STATIONS REFERRED TO HEREIN ARE IN REFERENCE TO SECTION 78-G.

CLASS D PATCHING		
TYPE 3-9"	TYPE 4-9"	
28+78 TO 29+20 5' WIDE 23.33 SQ. YD. E'BOUND LANE	2+05 TO 2+90 5' WIDE 47.22 SQ. YD. W'BOUND LANE	84+97 TO 85+71 5' WIDE 41.11 SQ. YD. E'BOUND LANE
45+42 TO 45+73 5' WIDE 17.22 SQ. YD. W'BOUND LANE	29+66 TO 30+60 5' WIDE 52.22 SQ. YD. W'BOUND LANE	96+47 TO 97+12 4' WIDE 28.89 SQ. YD. E'BOUND LANE
55+29 TO 55+69 5' WIDE 22.22 SQ. YD. E'BOUND LANE	30+26 TO 30+78 5' WIDE 28.89 SQ. YD. E'BOUND LANE	98+36 TO 99+10 4' WIDE 32.89 SQ. YD. E'BOUND LANE
97+34 TO 97+84 4' WIDE 22.22 SQ. YD. E'BOUND LANE	48+59 TO 49+48 6' WIDE 59.33 SQ. YD. E'BOUND LANE	100+14 TO 100+68 5' WIDE 30.00 SQ. YD. E'BOUND LANE
100+20 TO 100+58 5' WIDE 21.11 SQ. YD. E'BOUND LANE	78+40 TO 80+20 4' WIDE 80.00 SQ. YD. E'BOUND LANE	
TOTAL 106.11 S.Y.	TOTAL 400.55 S.Y.	

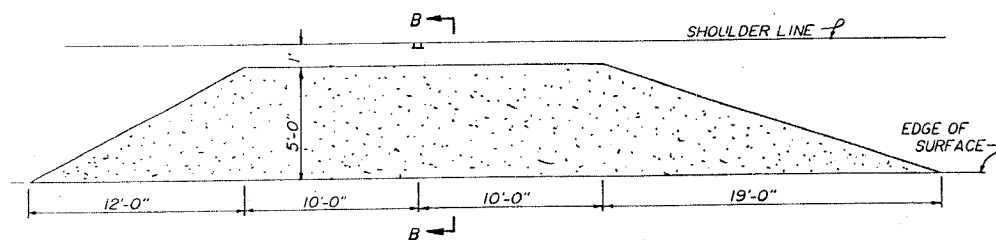
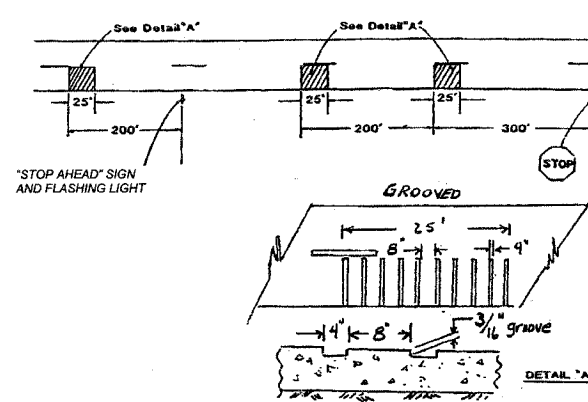
TYPICAL EXISTING CROSS-SECTION



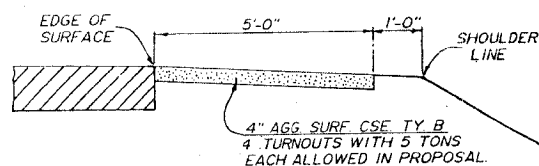
AREA REFLECTIVE CRACK CONTROL TREATMENT BETWEEN LEVELING BINDER AND HOT-MIX ASPHALT MIX "C" N50



TYPICAL RUMBLE STRIP APPLICATION IN ADVANCE OF AN INTERSECTION



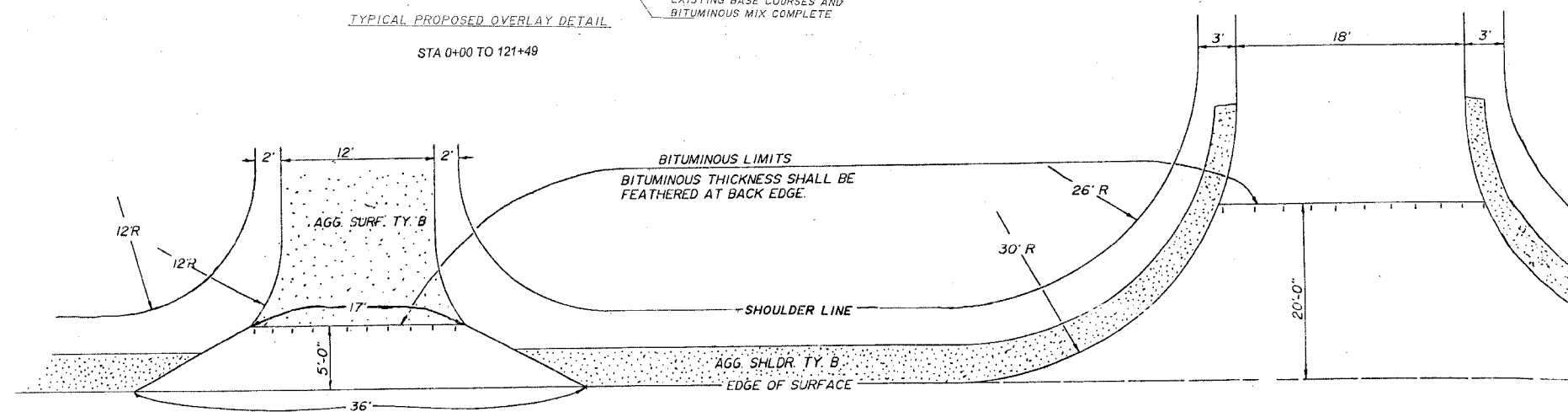
DETAIL OF MAILBOX TURNOUT



SECTION B-B

MAXIMUM GRADE = 6.3%
MINIMUM S.S.D.=306'
ADT 10 YR=700
YR. OF IMPROVEMENT DESIGN=2006
P=560 SU=30 MU=10
DESIGN SPEED=50 MPH

HOT-MIX ASPHALT THICKNESS 2 1/2"
M.S. =1500 MINIMUM
PRIME=0.10 GALLONS/SQ. YD.



DETAIL OF PRIVATE/FIELD ENTRANCES

27 PRIVATE/FIELD ENTRANCES WITH 5 TONS OF HOT-MIX ASPHALT SURFACE COURSE MIX "C" N50 PER ENTRANCE ALLOWED IN THE PROPOSAL

REPAIR ALL SIDE ROADS AND ENTRANCES AS REQUIRED BY DIRECTION OF THE ENGINEER. 5 TONS AGGREGATE SURFACE COURSE TYPE B PER ENTRANCE ALLOWED IN THE PROPOSAL.

DETAIL OF SIDE ROAD INTERSECTIONS, 5 EACH

25 TONS OF HOT-MIX ASPHALT SURFACE COURSE MIX "C" N50 ALLOWED PER SIDE ROAD INTERSECTION IN THE PROPOSAL