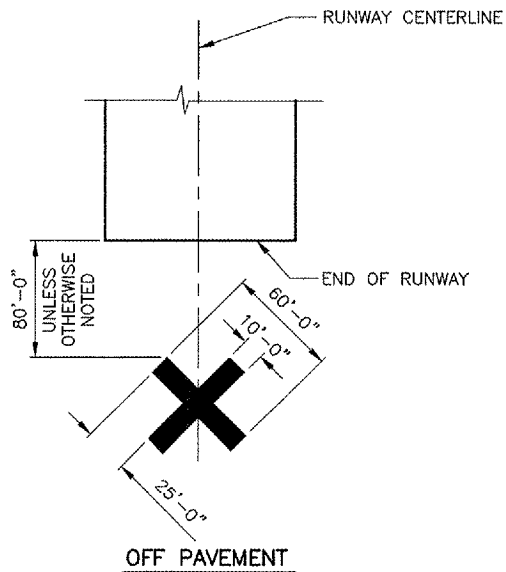


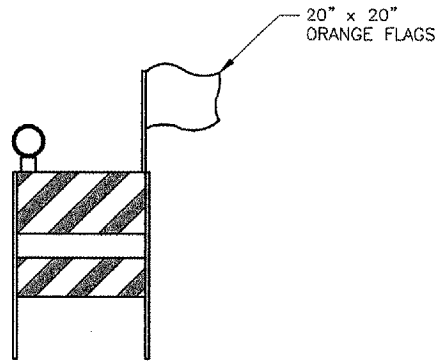
CONSTRUCTION SETBACK LINE DETAIL
 N.T.S.



CLOSED RUNWAY MARKER DETAIL
 N.T.S.

NOTES

- MARKERS SHALL BE SOLID YELLOW.
- MARKERS SHALL BE MATERIAL APPROVED BY THE ENGINEER.
- CONTRACTOR SHALL MAINTAIN AND RELOCATE MARKERS AS SHOWN ON THE PLANS OR AS NEEDED TO FACILITATE CONSTRUCTION.
- MARKERS ON PAVEMENT SHALL BE PLACED OVER EXISTING RUNWAY NUMERALS AS SHOWN. HOWEVER, WHEN WORK IS NECESSARY FOR THAT AREA OR PAVEMENT IS OPEN TO TAXIING AIRCRAFT, THE MARKERS SHALL BE RELOCATED OFF THE PAVEMENT AS SHOWN ON THE DETAIL.
- COST OF FURNISHING, INSTALLING, MAINTAINING, RELOCATING AND REMOVING MARKERS SHALL BE CONSIDERED INCIDENTAL TO THE CONTRACT.
- DURING VARIOUS PHASES OF WORK, IT WILL BE NECESSARY TO CLOSE RUNWAYS TO AIR TRAFFIC ON A TEMPORARY BASIS AS COORDINATED WITH THE AIRPORT AND TOWER, WHERE APPLICABLE, PERSONNEL. THE CONTRACTOR SHALL MARK THE RUNWAYS TO BE CLOSED BY PLACING A YELLOW CROSS AT THE LOCATION AND DIMENSIONS DETAILED ON THIS SHEET. THE CROSSES ARE SHOWN ON THE RESPECTIVE RUNWAYS ACCORDING TO THE VARIOUS PHASES OF WORK AS DELINEATED IN THE CONSTRUCTION ACTIVITY PLANS.



FLASHER BARRICADE DETAIL
 N.T.S.

NOTES

- FLASHERS TO BE BATTERY OPERATED. LENS TO BE RED AND BE ABLE TO ROTATE 90 DEGREES.
- SANDBAGS TO BE PLACED ON EACH SUPPORT BRACE AS REQUIRED TO PREVENT DISPLACEMENT BY WIND, JET OR PROP BLAST.
- NO SEPARATE PAYMENT WILL BE MADE FOR THIS ITEM. COSTS SHALL BE CONSIDERED INCIDENTAL TO THE PROJECT.
- PLACE AT FIFTEEN-FOOT (15') INTERVALS.
- ONE 20"x20" ORANGE FLAG TO BE INSTALLED ON EACH BARRICADE.

CONTRACTOR ACCESS ROUTE NOTES

- THE PROPOSED CONTRACTOR'S ACCESS ROUTE (EXISTING NORTH QUADRANT ACCESS ROAD FROM GLENWOOD-LANSING ROAD AND WENTWORTH AVENUE INTERSECTION) PAVEMENT STRUCTURE IS:
 - 1.5" BITUMINOUS SURFACE COURSE (PLACED 2006) - EXCELLENT CONDITION
 - 2.5" BITUMINOUS SURFACE COURSE (PLACED 2006)
 - 8" CRUSHED AGGREGATE BASE COURSE (PLACED 2006)
- THE CONTRACTOR MAY USE THE EXISTING NORTH QUADRANT ACCESS ROAD FOR ACCESS IF HE FEELS THE PAVEMENT STRUCTURE IS SUFFICIENT TO SUPPORT HIS OPERATIONS WITHOUT DAMAGE OR DISTRESS.
- IF THE CONTRACTOR ELECTS NOT TO USE THE EXISTING NORTH QUADRANT ACCESS ROAD PAVEMENT, HE SHALL CONSTRUCT AN ACCESS ROUTE SUFFICIENT TO SUPPORT HIS OPERATIONS FROM GLENWOOD-LANSING ROAD AT THE CONTRACTOR'S OWN EXPENSE.
- ALL PAVEMENTS OR TURF AREAS UTILIZED BY THE CONTRACTOR FOR AN ACCESS ROUTE, STAGING, OR STORAGE SHALL BE REPAIRED AND RESTORED TO THEIR ORIGINAL CONDITION TO THE SATISFACTION OF THE AIRPORT. NO ADDITIONAL COMPENSATION TO PROTECT, REPAIR, OR RESTORE THESE AREAS SHALL BE MADE.

IL. CONTRACT: LA036
 IL. LETTING ITEM: 2A
 IL. PROJECT: IGQ-3565
 A.I.P. PROJECT: 3-17-0121-B25

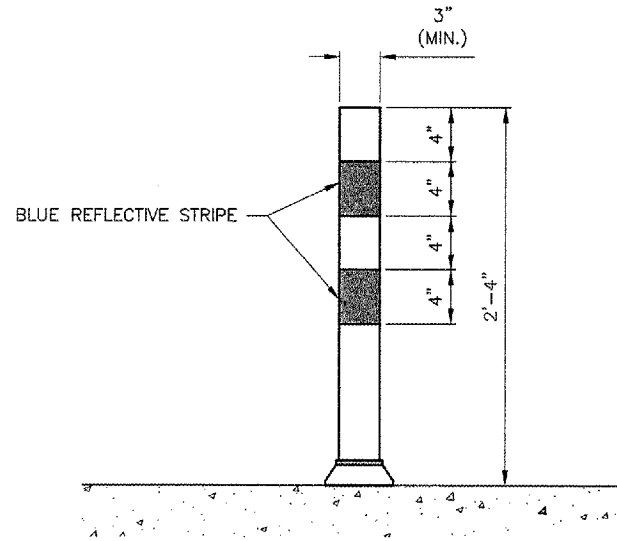
SURVEY BOOK # BOOK #

REVISIONS		
NUMBER	BY	DATE

0 1 2
 THIS BAR IS EQUAL TO 2" AT FULL SCALE (34X22).

VILLAGE OF LANSING
 LANSING MUNICIPAL AIRPORT
 LANSING, ILLINOIS

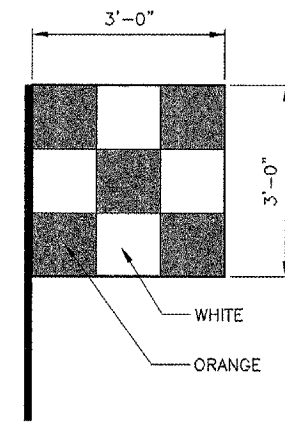
REHABILITATE AIRFIELD LIGHTING SYSTEM
 SEQUENCE OF CONSTRUCTION
 CLOSED RUNWAY MARKER, FLASHER BARRICADE
 MISCELLANEOUS DETAILS



TEMPORARY TAXIWAY EDGE DELINEATOR
 N.T.S.

NOTES

- SPACED AT 25'-0" INTERVALS.
- SIMILAR TO IDOT STANDARD 702001-03, FLEXIBLE DELINEATOR.
- DELINEATOR SHALL BE WEIGHTED DOWN (NOT ATTACHED) TO PAVEMENT TO PREVENT MOVEMENT BY WIND, PROP WASH OR JET BLAST. SAND BAGS MAY BE APPROVED FOR THIS.
- REFLECTIVE STRIPES SHALL BE BLUE.



VEHICLE SIGNAL FLAG
 N.T.S.

© Copyright GMT, Inc.
GMT
 CRAWFORD, MURPHY & TILLY, INC.
 CONSULTING ENGINEERS
 License No. 04-000633

Lansing Municipal
airport

DESIGN BY: JWD
 DRAWN BY: JWD
 CHECKED BY: DKP
 APPROVED BY: -----
 DATE: 02 MARCH 2007
 JOB No: 06297-02

G-07