

LEGEND

- TEMPORARY LIGHT POLE (SEE LIGHTING PLANS)

NOTES:

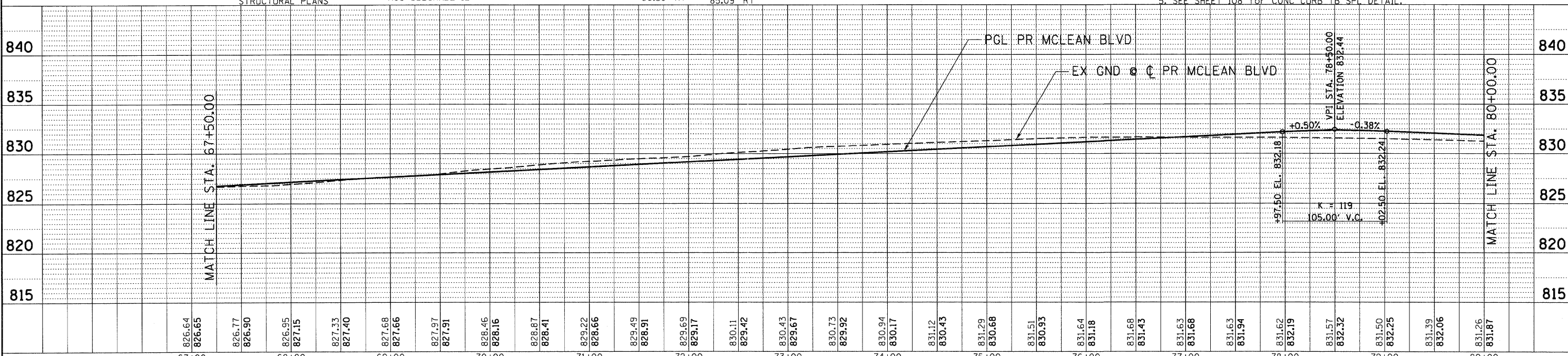
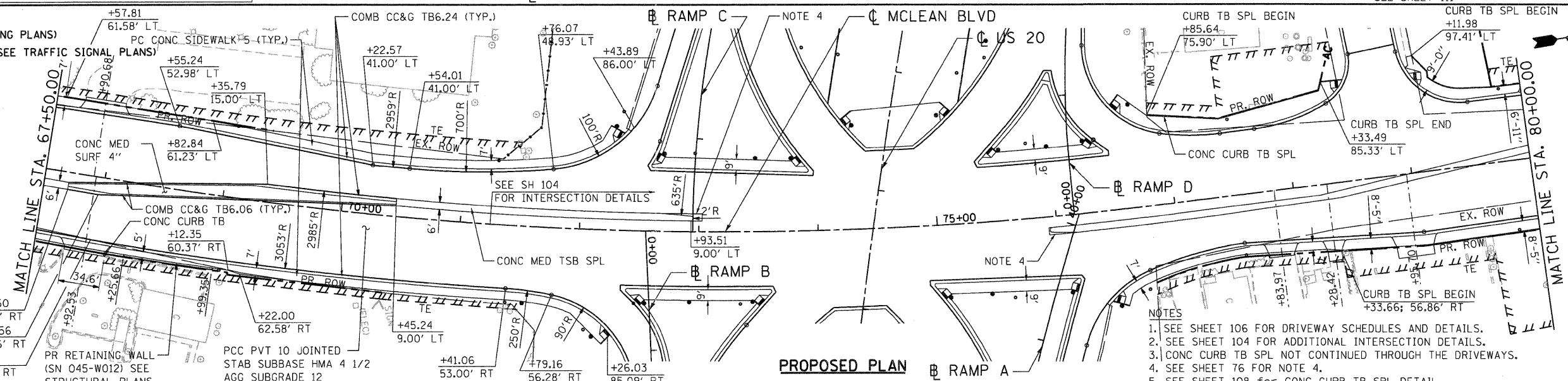
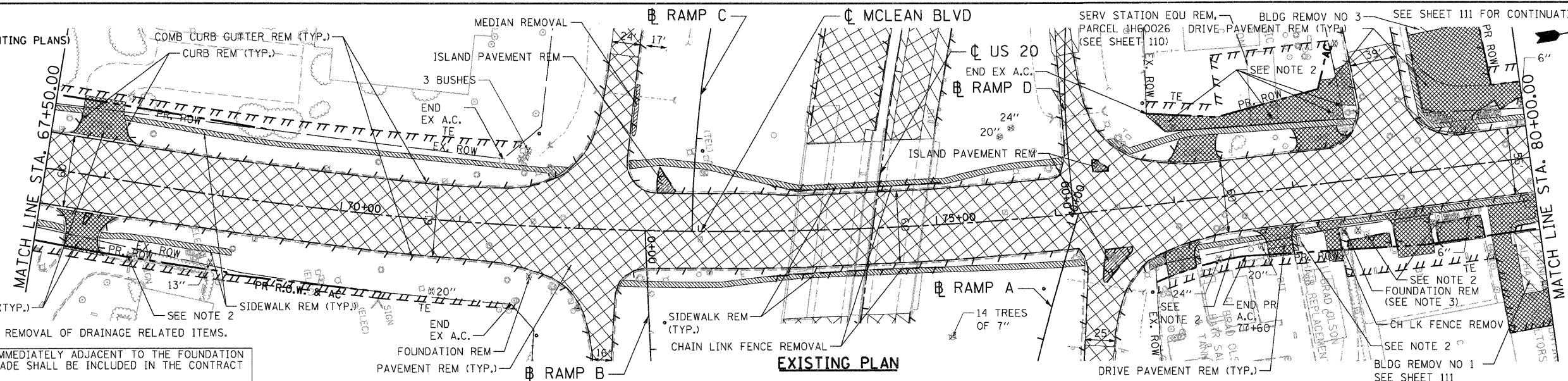
1. SEE DRAINAGE AND UTILITY PLANS FOR REMOVAL OF DRAINAGE RELATED ITEMS.
2. ITEM TO BE REMOVED BY OTHERS.
3. THE COST TO REMOVE THE CONCRETE IMMEDIATELY ADJACENT TO THE FOUNDATION ONE FOOT BELOW THE PROPOSED SUBGRADE SHALL BE INCLUDED IN THE CONTRACT UNIT PRICE FOR FOUNDATION REMOVAL.

LEGEND

- PROPOSED LIGHT POLE (SEE LIGHTING PLANS)
- PROPOSED TRAFFIC SIGNAL POLE (SEE TRAFFIC SIGNAL PLANS)

NOTES:

1. SEE SHEET 106 FOR DRIVEWAY SCHEDULES AND DETAILS.
2. SEE SHEET 104 FOR ADDITIONAL INTERSECTION DETAILS.
3. CONC CURB TB SPL NOT CONTINUED THROUGH THE DRIVEWAYS.
4. SEE SHEET 76 FOR NOTE 4.
5. SEE SHEET 108 FOR CONC CURB TB SPL DETAIL.



FILE NAME =	USER NAME = #USER#	DESIGNED - MRK	REVISED -	STATE OF ILLINOIS DEPARTMENT OF TRANSPORTATION FAP ROUTE 345 / US ROUTE 20	ROADWAY PLAN AND PROFILE MCLEAN BOULEVARD	F.A.P. RTE.	SECTION	COUNTY	TOTAL SHEETS	SHEET NO.	
#FILEL#	PLOT SCALE = #SCALE#	DRAWN - MRK	REVISED -			345	8R-R	KANE	794	77	
PLOT DATE = #DATE#	DATE - 12/16/11	CHECKED - DDH	REVISED -			CONTRACT NO. 60H45					
						FED. ROAD DIST. NO. [ILLINOIS] FED. AID PROJECT					

PLAN	BY	DATE
SURVEYED		
PLOTTED		
CHECKED		
NO. OF WAY CHECKED		
CADD FILE NAME		

PROFILE	BY	DATE
SURVEYED		
PLOTTED		
CHECKED		
NO. OF WAY CHECKED		
STRUCTURE NOTATIONS		
CADD FILE NAME		

12-15-2011 11:36:41 BALZKEK1
 \\FS-0044\AR\VRILL.TJ\TRANS\07\2282\2137\9-00\1\CVL\CAD\60H45\SHEET\0160H45-SHT-PLAN\PRF\02.DGN