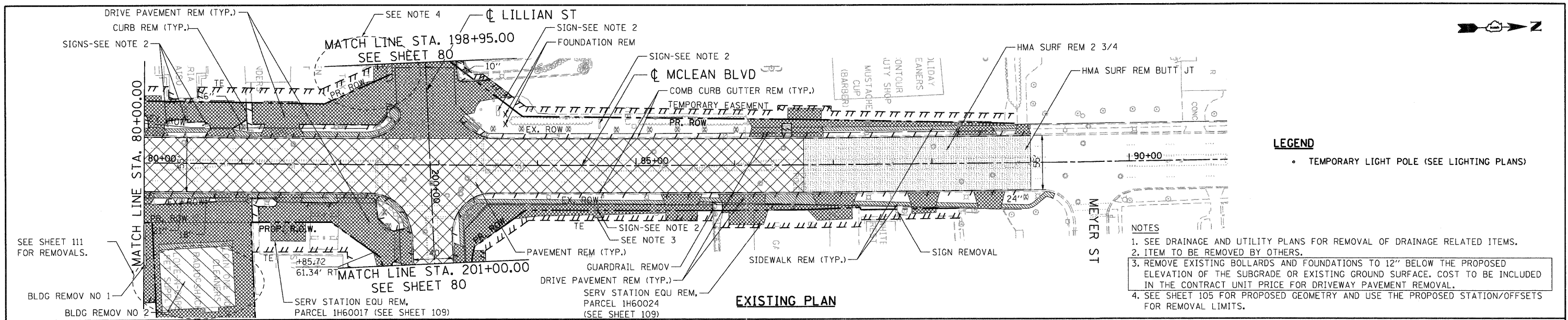


PLAN	BY	DATE
SURVEYED		
PLOTTED		
CHECKED		
NO. OF WAY CHECKED		
STRUCTURE NOTATIONS CHECKED		
ADD FILE NAME		
NO.		

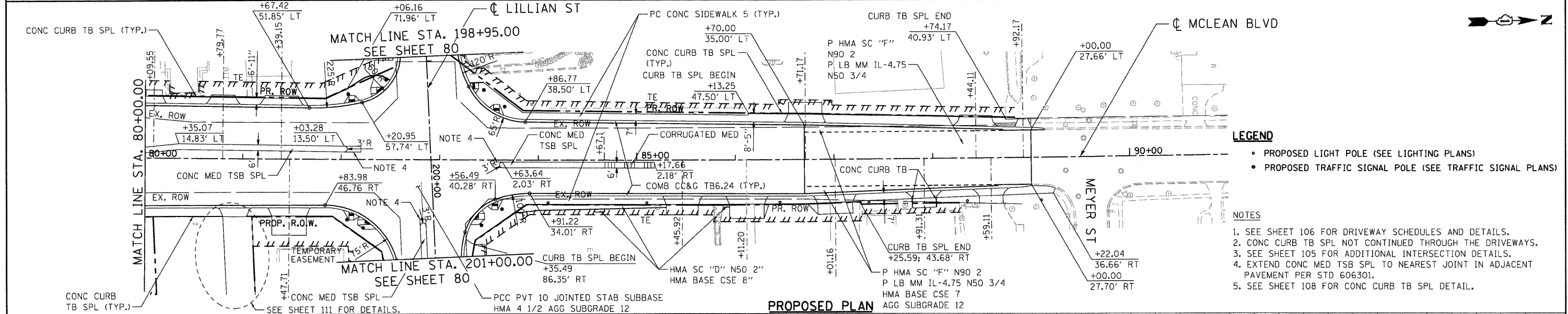
PROFILE	BY	DATE
SURVEYED		
PLOTTED		
CHECKED		
NO.		
STRUCTURE NOTATIONS CHECKED		
ADD FILE NAME		
NO.		

12-16-2011 11:28:47 BALZEMKI
 \\F5-0014\KARAVALLI.T.D\TRANS.D\2202\21379-00\G:\CIVIL\CAD\6045\SHEET\06R045-SHT-PL\PRF045.DGN



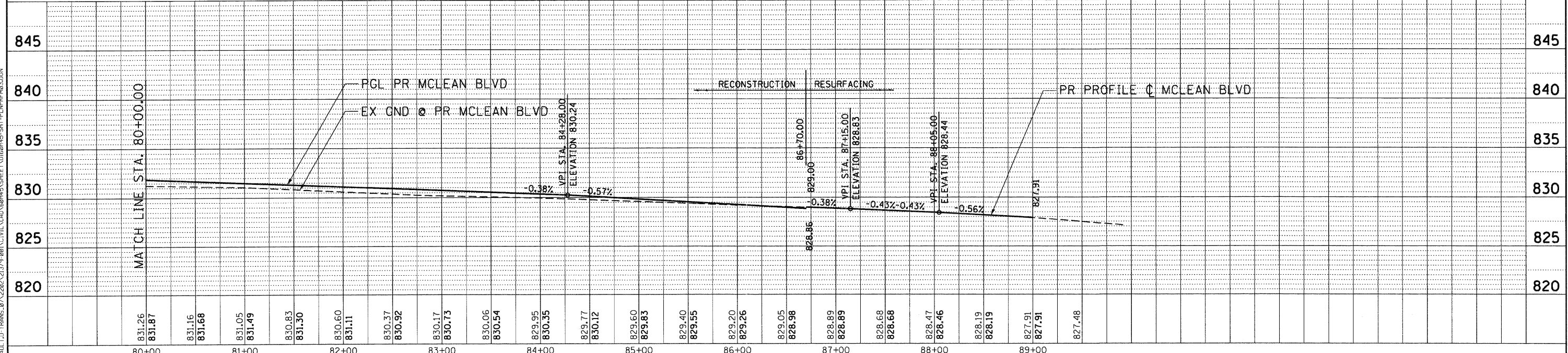
LEGEND
 • TEMPORARY LIGHT POLE (SEE LIGHTING PLANS)

NOTES
 1. SEE DRAINAGE AND UTILITY PLANS FOR REMOVAL OF DRAINAGE RELATED ITEMS.
 2. ITEM TO BE REMOVED BY OTHERS.
 3. REMOVE EXISTING BOLLARDS AND FOUNDATIONS TO 12" BELOW THE PROPOSED ELEVATION OF THE SUBGRADE OR EXISTING GROUND SURFACE. COST TO BE INCLUDED IN THE CONTRACT UNIT PRICE FOR DRIVEWAY PAVEMENT REMOVAL.
 4. SEE SHEET 105 FOR PROPOSED GEOMETRY AND USE THE PROPOSED STATION/OFFSETS FOR REMOVAL LIMITS.



LEGEND
 • PROPOSED LIGHT POLE (SEE LIGHTING PLANS)
 • PROPOSED TRAFFIC SIGNAL POLE (SEE TRAFFIC SIGNAL PLANS)

NOTES
 1. SEE SHEET 106 FOR DRIVEWAY SCHEDULES AND DETAILS.
 2. CONC CURB TB SPL NOT CONTINUED THROUGH THE DRIVEWAYS.
 3. SEE SHEET 105 FOR ADDITIONAL INTERSECTION DETAILS.
 4. EXTEND CONC MED TSB SPL TO NEAREST JOINT IN ADJACENT PAVEMENT PER STD 606301.
 5. SEE SHEET 108 FOR CONC CURB TB SPL DETAIL.



FILE NAME =	USER NAME = #USER#	DESIGNED - MRK	REVISED -	STATE OF ILLINOIS DEPARTMENT OF TRANSPORTATION FAP ROUTE 345 / US ROUTE 20	ROADWAY PLAN AND PROFILE MCLEAN BOULEVARD	F.A.P. RTE.	SECTION	COUNTY	TOTAL SHEETS	SHEET NO.	
#FILE#	PLOT SCALE = #SCALE#	DRAWN - MRK	REVISED -			345	8R-R	KANE	794	78	
	CHECKED - DDH	CHECKED - DDH	REVISED -			CONTRACT NO. 60H45					
	PLOT DATE = #DATE#	DATE - 12/16/11	REVISED -			FED. ROAD DIST. NO. [ILLINOIS] FED. AID PROJECT					