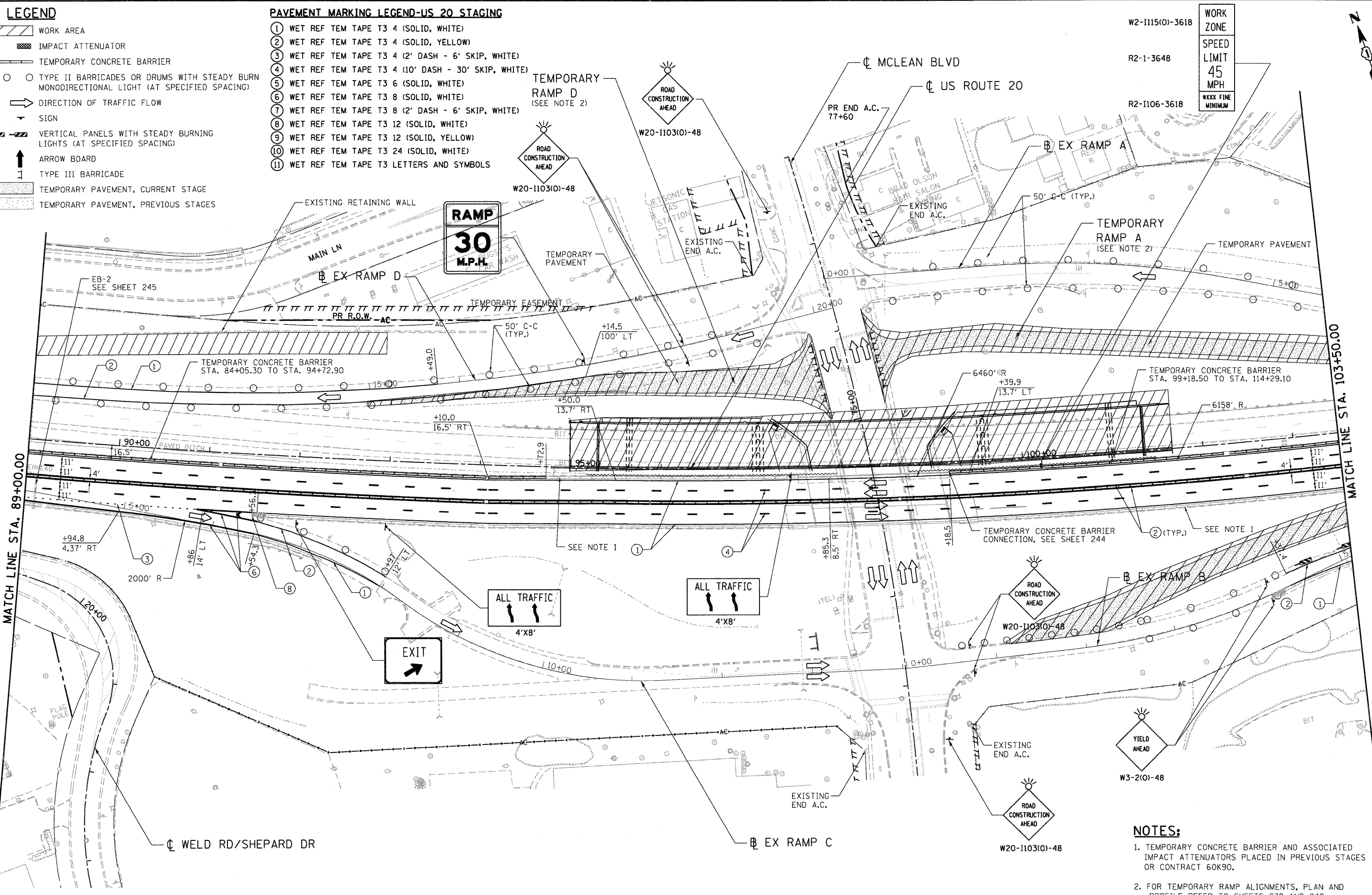


LEGEND

- WORK AREA
- IMPACT ATTENUATOR
- TEMPORARY CONCRETE BARRIER
- TYPE II BARRICADES OR DRUMS WITH STEADY BURN MONODIRECTIONAL LIGHT (AT SPECIFIED SPACING)
- DIRECTION OF TRAFFIC FLOW
- SIGN
- VERTICAL PANELS WITH STEADY BURNING LIGHTS (AT SPECIFIED SPACING)
- ARROW BOARD
- TYPE III BARRICADE
- TEMPORARY PAVEMENT, CURRENT STAGE
- TEMPORARY PAVEMENT, PREVIOUS STAGES

PAVEMENT MARKING LEGEND-US 20 STAGING

- ① WET REF TEM TAPE T3 4 (SOLID, WHITE)
- ② WET REF TEM TAPE T3 4 (SOLID, YELLOW)
- ③ WET REF TEM TAPE T3 4 (2' DASH - 6' SKIP, WHITE)
- ④ WET REF TEM TAPE T3 4 (10' DASH - 30' SKIP, WHITE)
- ⑤ WET REF TEM TAPE T3 6 (SOLID, WHITE)
- ⑥ WET REF TEM TAPE T3 8 (SOLID, WHITE)
- ⑦ WET REF TEM TAPE T3 8 (2' DASH - 6' SKIP, WHITE)
- ⑧ WET REF TEM TAPE T3 12 (SOLID, WHITE)
- ⑨ WET REF TEM TAPE T3 12 (SOLID, YELLOW)
- ⑩ WET REF TEM TAPE T3 24 (SOLID, WHITE)
- ⑪ WET REF TEM TAPE T3 LETTERS AND SYMBOLS



W2-1115(O)-3618
R2-1-3648
R2-1106-3618

| |
|-------------------|
| WORK ZONE |
| SPEED LIMIT |
| 45 MPH |
| XXXX FINE MINIMUM |

NOTES:

- TEMPORARY CONCRETE BARRIER AND ASSOCIATED IMPACT ATTENUATORS PLACED IN PREVIOUS STAGES OR CONTRACT 60K90.
- FOR TEMPORARY RAMP ALIGNMENTS, PLAN AND PROFILE REFER TO SHEETS 239 AND 240.

\\D:\6045-BURDER\01.DGN, \\D:\6045-ALIGN\01.DGN, \\D:\6045-LEGEND\01.DGN, \\D:\6045-DRIVE\01.DGN, \\D:\6045-DESIGN\01.DGN, \\D:\6045-LEGEND\01.DGN
 \\D:\6045-BURDER\01.DGN, \\D:\6045-ALIGN\01.DGN, \\D:\6045-LEGEND\01.DGN, \\D:\6045-DRIVE\01.DGN, \\D:\6045-DESIGN\01.DGN, \\D:\6045-LEGEND\01.DGN
 12-12-2011 12:54:12

| | | | | | | | | | | | | |
|--------------------|--------------------|-----------------|-----------|--|--|---|----|---------------|-------------------|--------------------|--------------|-----------|
| FILE NAME = #FILE# | USER NAME = #USER# | DESIGNED - MM | REVISED - | STATE OF ILLINOIS DEPARTMENT OF TRANSPORTATION FAP ROUTE 345 / US ROUTE 20 | | STAGING AND TRAFFIC CONTROL STAGE IA U.S. ROUTE 20 | | F.A.P. RTE. | SECTION | COUNTY | TOTAL SHEETS | SHEET NO. |
| | | DRAWN - RJS | REVISED - | | | | | 345 | 8R-R | KANE | 794 | 142 |
| | | CHECKED - PB | REVISED - | SCALE: 1"=50' | | SHEET NO. | OF | STA. 89+00.00 | TO STA. 103+50.00 | CONTRACT NO. 60H45 | | |
| | | DATE - 12/16/11 | REVISED - | SCALE: 1"=50' | | SHEET NO. | OF | STA. 89+00.00 | TO STA. 103+50.00 | CONTRACT NO. 60H45 | | |