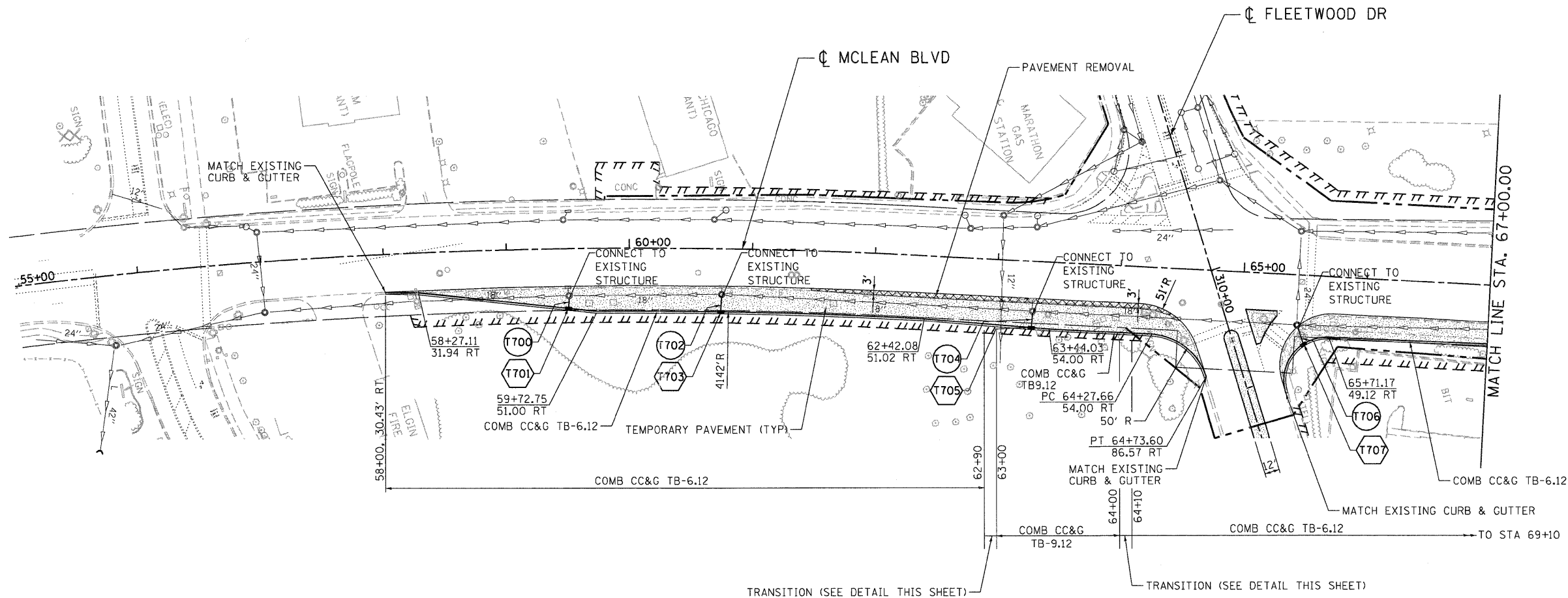


TRANSITION DETAILS

TRANSITION SHALL BE MEASURED AND PAID FOR AS COMBINATION CONCRETE CURB AND GUTTER, TYPE B-9.12.

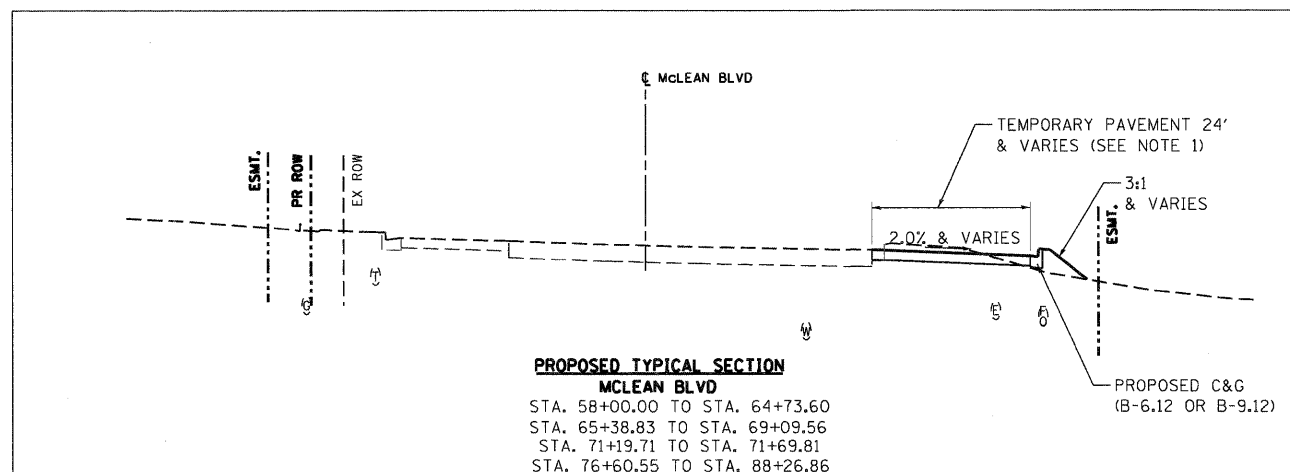


NOTES:

1. SEE DRAINAGE SCHEDULES FOR TEMPORARY DRAINAGE INFORMATION.

LEGEND

- TEMPORARY STORM SEWER
- TEMPORARY DRAINAGE STRUCTURE



FILE NAME = #FILEL#	USER NAME = #USER#	DESIGNED - AB	REVISED -	STATE OF ILLINOIS DEPARTMENT OF TRANSPORTATION FAP ROUTE 345 / US ROUTE 20	STAGING AND TRAFFIC CONTROL TEMPORARY WIDENING MCLEAN BOULEVARD	F.A.P. RTE.	SECTION	COUNTY	TOTAL SHEETS	SHEET NO.	
		DRAWN - JFS	REVISED -			345	8R-R	KANE	794	235	
		CHECKED - PB	REVISED -			CONTRACT NO. 60H45					
		DATE - 12/16/11	REVISED -			FED. ROAD DIST. NO. [ILLINOIS] FED. AID PROJECT					
		PLOT SCALE = #SCALE# PLOT DATE = #DATE#		SCALE: 1"=50' SHEET NO. OF STA. 55+00.00 TO STA. 67+00.00							

..\D168H45-BORDER01.DGN, ..\D168H45-ALIGNMENT.DGN, ..\D168H45-STAGING2.DGN, ..\D168H45-TOPO2.DGN, ..\D168H45-LEGEND.DGN, ..\D168H45-DRAIN.TBL.DGN, ..\D168H45-DRAINE21.DGN, ..\D168H45-DRAIN.P01.DGN, ..\D168H45-DRAIN.P02.DGN, ..\D168H45-DRAIN.P03.DGN, ..\D168H45-DRAIN.P04.DGN, ..\D168H45-DRAIN.P05.DGN, ..\D168H45-DRAIN.P06.DGN, ..\D168H45-DRAIN.P07.DGN, ..\D168H45-DRAIN.P08.DGN, ..\D168H45-DRAIN.P09.DGN, ..\D168H45-DRAIN.P10.DGN, ..\D168H45-DRAIN.P11.DGN, ..\D168H45-DRAIN.P12.DGN, ..\D168H45-DRAIN.P13.DGN, ..\D168H45-DRAIN.P14.DGN, ..\D168H45-DRAIN.P15.DGN, ..\D168H45-DRAIN.P16.DGN, ..\D168H45-DRAIN.P17.DGN, ..\D168H45-DRAIN.P18.DGN, ..\D168H45-DRAIN.P19.DGN, ..\D168H45-DRAIN.P20.DGN, ..\D168H45-DRAIN.P21.DGN, ..\D168H45-DRAIN.P22.DGN, ..\D168H45-DRAIN.P23.DGN, ..\D168H45-DRAIN.P24.DGN, ..\D168H45-DRAIN.P25.DGN, ..\D168H45-DRAIN.P26.DGN, ..\D168H45-DRAIN.P27.DGN, ..\D168H45-DRAIN.P28.DGN, ..\D168H45-DRAIN.P29.DGN, ..\D168H45-DRAIN.P30.DGN, ..\D168H45-DRAIN.P31.DGN, ..\D168H45-DRAIN.P32.DGN, ..\D168H45-DRAIN.P33.DGN, ..\D168H45-DRAIN.P34.DGN, ..\D168H45-DRAIN.P35.DGN, ..\D168H45-DRAIN.P36.DGN, ..\D168H45-DRAIN.P37.DGN, ..\D168H45-DRAIN.P38.DGN, ..\D168H45-DRAIN.P39.DGN, ..\D168H45-DRAIN.P40.DGN, ..\D168H45-DRAIN.P41.DGN, ..\D168H45-DRAIN.P42.DGN, ..\D168H45-DRAIN.P43.DGN, ..\D168H45-DRAIN.P44.DGN, ..\D168H45-DRAIN.P45.DGN, ..\D168H45-DRAIN.P46.DGN, ..\D168H45-DRAIN.P47.DGN, ..\D168H45-DRAIN.P48.DGN, ..\D168H45-DRAIN.P49.DGN, ..\D168H45-DRAIN.P50.DGN, ..\D168H45-DRAIN.P51.DGN, ..\D168H45-DRAIN.P52.DGN, ..\D168H45-DRAIN.P53.DGN, ..\D168H45-DRAIN.P54.DGN, ..\D168H45-DRAIN.P55.DGN, ..\D168H45-DRAIN.P56.DGN, ..\D168H45-DRAIN.P57.DGN, ..\D168H45-DRAIN.P58.DGN, ..\D168H45-DRAIN.P59.DGN, ..\D168H45-DRAIN.P60.DGN, ..\D168H45-DRAIN.P61.DGN, ..\D168H45-DRAIN.P62.DGN, ..\D168H45-DRAIN.P63.DGN, ..\D168H45-DRAIN.P64.DGN, ..\D168H45-DRAIN.P65.DGN, ..\D168H45-DRAIN.P66.DGN, ..\D168H45-DRAIN.P67.DGN, ..\D168H45-DRAIN.P68.DGN, ..\D168H45-DRAIN.P69.DGN, ..\D168H45-DRAIN.P70.DGN, ..\D168H45-DRAIN.P71.DGN, ..\D168H45-DRAIN.P72.DGN, ..\D168H45-DRAIN.P73.DGN, ..\D168H45-DRAIN.P74.DGN, ..\D168H45-DRAIN.P75.DGN, ..\D168H45-DRAIN.P76.DGN, ..\D168H45-DRAIN.P77.DGN, ..\D168H45-DRAIN.P78.DGN, ..\D168H45-DRAIN.P79.DGN, ..\D168H45-DRAIN.P80.DGN, ..\D168H45-DRAIN.P81.DGN, ..\D168H45-DRAIN.P82.DGN, ..\D168H45-DRAIN.P83.DGN, ..\D168H45-DRAIN.P84.DGN, ..\D168H45-DRAIN.P85.DGN, ..\D168H45-DRAIN.P86.DGN, ..\D168H45-DRAIN.P87.DGN, ..\D168H45-DRAIN.P88.DGN, ..\D168H45-DRAIN.P89.DGN, ..\D168H45-DRAIN.P90.DGN, ..\D168H45-DRAIN.P91.DGN, ..\D168H45-DRAIN.P92.DGN, ..\D168H45-DRAIN.P93.DGN, ..\D168H45-DRAIN.P94.DGN, ..\D168H45-DRAIN.P95.DGN, ..\D168H45-DRAIN.P96.DGN, ..\D168H45-DRAIN.P97.DGN, ..\D168H45-DRAIN.P98.DGN, ..\D168H45-DRAIN.P99.DGN, ..\D168H45-DRAIN.P100.DGN