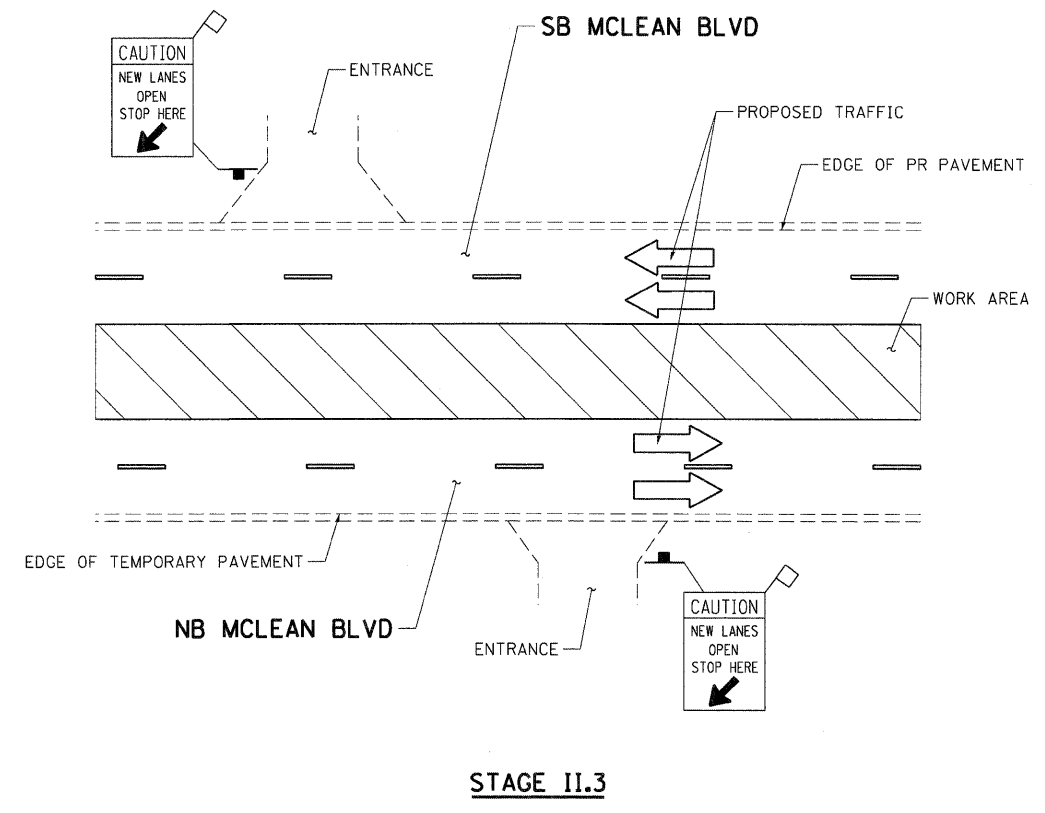
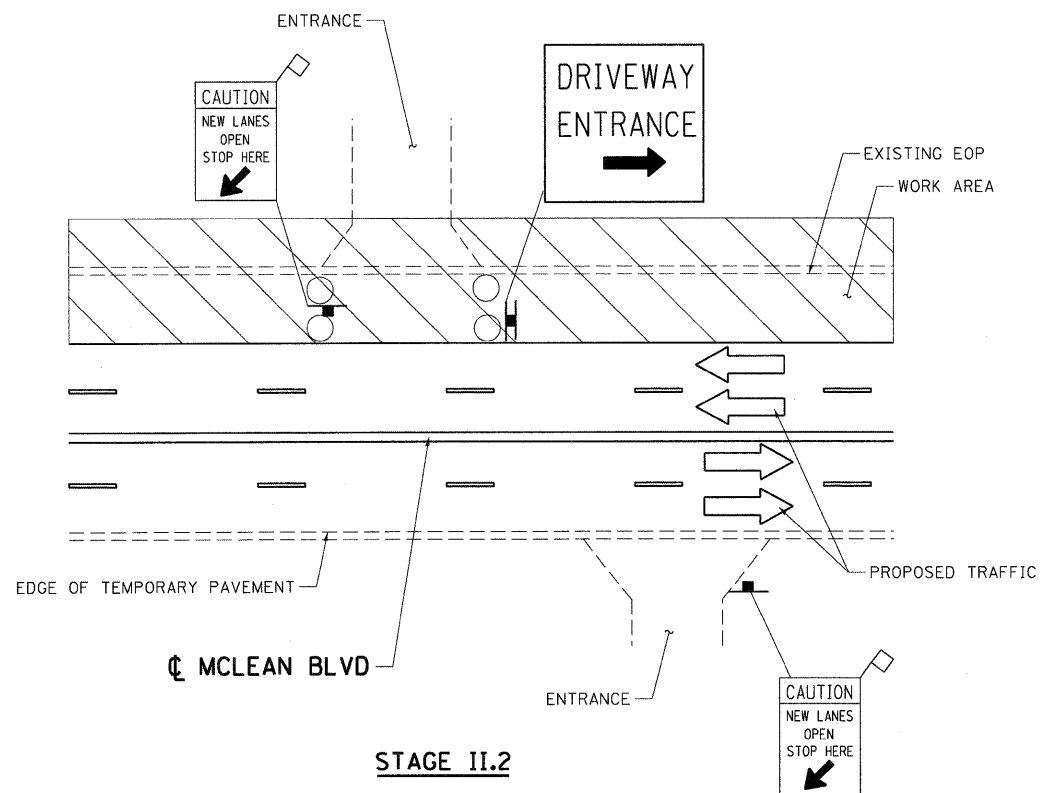
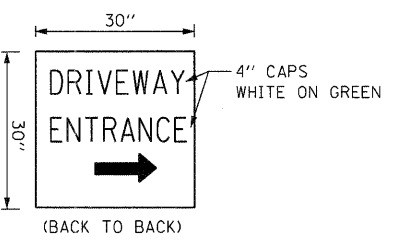
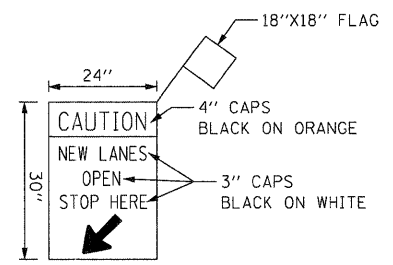


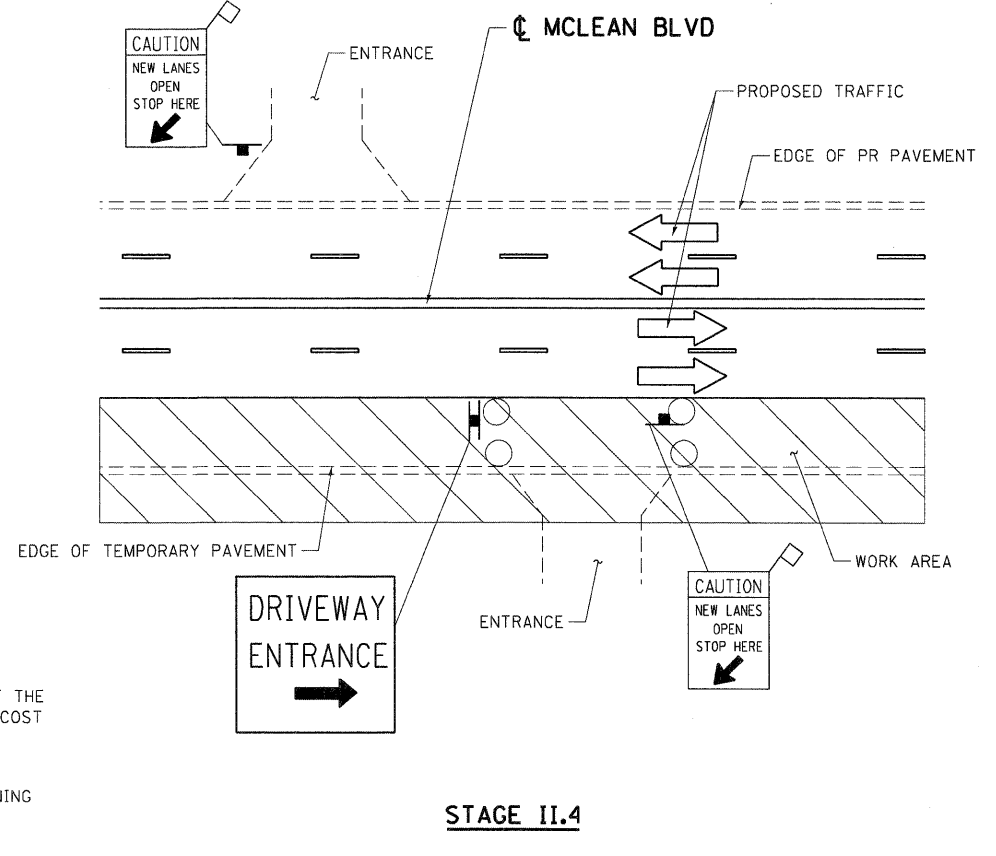
STAGE II.1



STAGE II.3



STAGE II.2



STAGE II.4

NOTES:

- "CAUTION NEW LANES OPEN STOP HERE" SIGNS SHALL BE PLACED AT EACH ENTRANCE WITHIN THE CONTRACT LIMITS DURING EACH STAGE OF CONSTRUCTION. THE LOCATION SHALL BE 4' MINIMUM FROM THE EDGE OF THE INTERSECTING TRAVELED LANE AND AS DIRECTED BY THE ENGINEER. THE COST OF THESE SIGNS SHALL BE INCLUDED IN THE CONTRACT UNIT PRICE FOR "TRAFFIC CONTROL AND PROTECTION, SPECIAL".
- SIGNING IS SHOWN FOR STAGING ON MCLEAN BOULEVARD. SIMILAR SIGNING SHALL BE USED ON FLEETWOOD DR. AND LILIAN ST. WHERE APPLICABLE.

\\FS-0814\AMV\VAULT.TD-TRANS.07\2202\31379-081\CIVIL\CAD\60H45\SHEET\DI06H45-SHT-STAGING\INDL.DGN
 BRJZEKJ
 12-12-2011 13:04:25

FILE NAME = #FILEL#	USER NAME = #USER#	DESIGNED - SA	REVISED -
		DRAWN - SA	REVISED -
		CHECKED - DDH	REVISED -
		DATE - 12/16/11	REVISED -

STATE OF ILLINOIS
DEPARTMENT OF TRANSPORTATION
 FAP ROUTE 345 / US ROUTE 20

STAGING AND TRAFFIC CONTROL
TYPICAL ENTRANCE SIGNING

SCALE: N.T.S. SHEET NO. OF STA. TO STA.

F.A.P. RTE. 345	SECTION 8R-R	COUNTY KANE	TOTAL SHEETS 794	SHEET NO. 238
CONTRACT NO. 60H45				
FED. ROAD DIST. NO. ILLINOIS FED. AID PROJECT				

