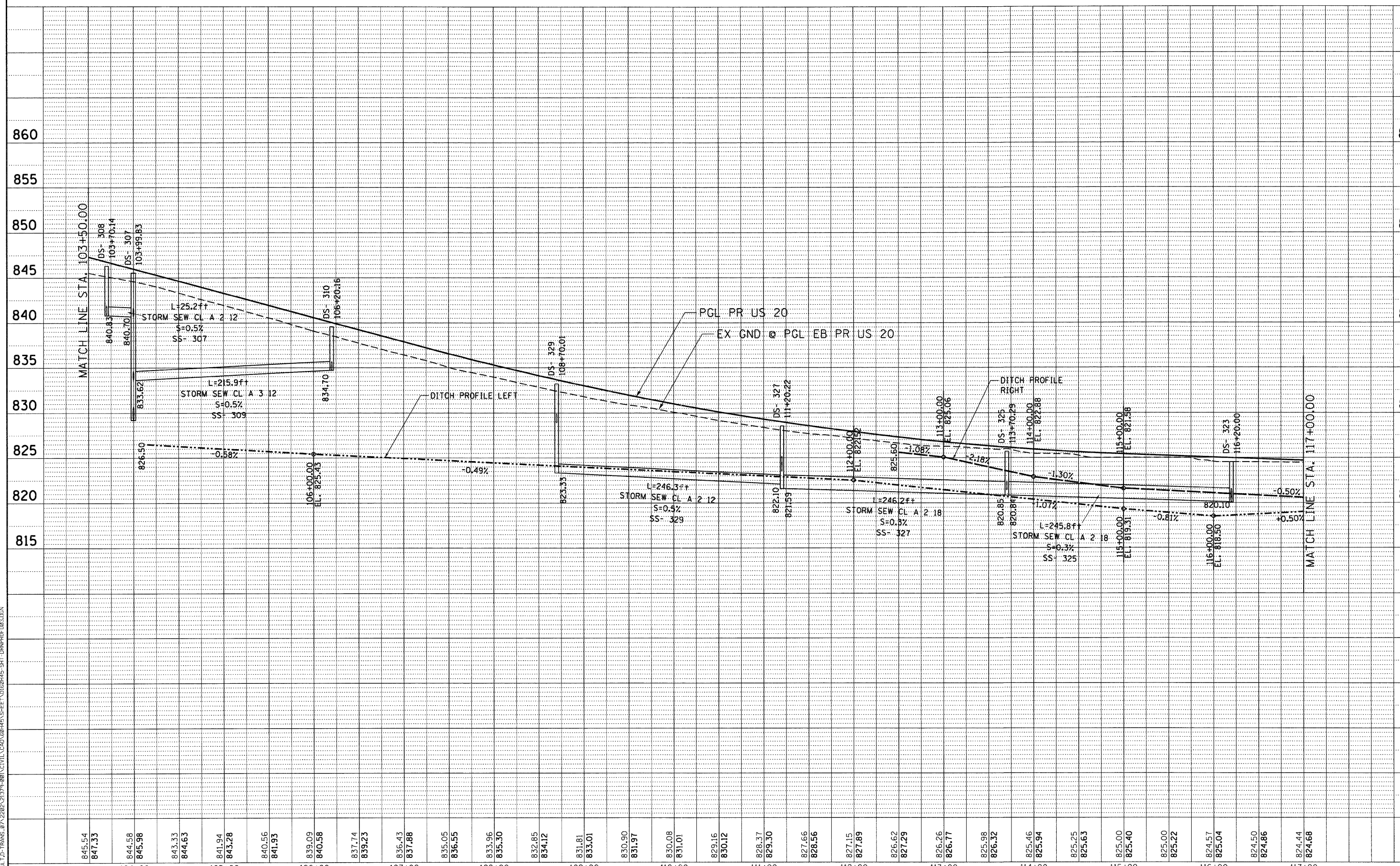


PLAN	SURVEYED	BY	DATE
	PLOTTED		
	GRADES CHECKED		
	STRUCTURE NOTATIONS CHECKED		
	NO.		
	FILE NAME		

PROFILE	SURVEYED	BY	DATE
	PLOTTED		
	GRADES CHECKED		
	STRUCTURE NOTATIONS CHECKED		
	NO.		
	FILE NAME		

12-15-2011 15:09:35 BAJ1FW61  
 \\FS-004\WORK\VAL-LD-TRANS-07-2282\21379-08\NCIVIL\CAD\68H465\SHEET\0160H45-SHT-DRAINPROF(03).DWG



FILE NAME =	USER NAME = #USER#	DESIGNED - SLH	REVISED -	<b>STATE OF ILLINOIS</b> <b>DEPARTMENT OF TRANSPORTATION</b> FAP ROUTE 345 / US ROUTE 20		<b>DRAINAGE PROFILE</b> <b>U.S. ROUTE 20</b>		F.A.P. RTE. 345	SECTION 8R-R	COUNTY KANE	TOTAL SHEETS 794	SHEET NO. 268
#FILE#		DRAWN - JFS	REVISED -			SCALE: HORIZ. 1"=50'	VERT. 1"=5'	STA. 103+50.00 TO STA. 117+00.00	FED. ROAD DIST. NO.	ILLINOIS FED. AID PROJECT	CONTRACT NO. 60H45	
PLOT SCALE = #SCALE#		CHECKED - TKL	REVISED -									
PLOT DATE = #DATE#		DATE - 12/16/11	REVISED -									



TENG & ASSOCIATES, INC.  
 ENGINEERS/ARCHITECTS/PLANNERS  
 CHICAGO, ILLINOIS