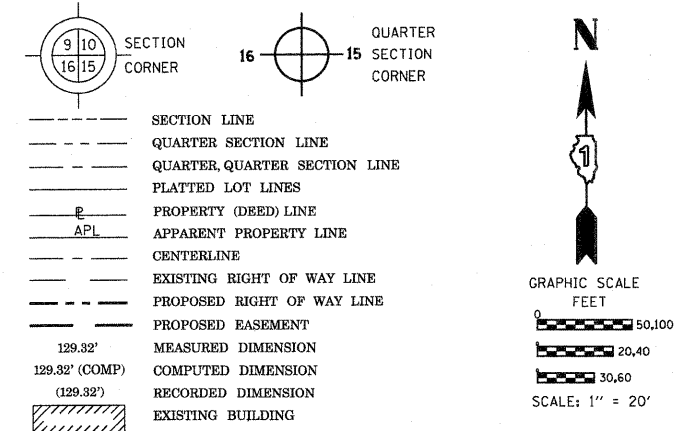


FROM	BEARING/ANGLE	DISTANCE	TO	DESCRIPTION
507	NE 51 37'57"	109.43	983	CUT CROSS ON MANHOLE LID IN ROAD
507	NE 80 35'27"	71.78	984	CUT CROSS IN TOP OF CURB
507	NE 28 14'55"	34.76	985	CUT CROSS IN TOP OF CURB
5422	NW 39 01'27"	270.34	977	CUT CROSS ON SANITARY MANHOLE LID
5422	NW 45 46'11"	108.54	980	5/8" REBAR WITH YELLOW CAP
5422	NW 58 52'02"	32.65	981	5/8" REBAR WITH YELLOW CAP
5424	NW 55 52'06"	94.00	980	5/8" REBAR WITH YELLOW CAP
5424	SW 77 44'30"	28.64	981	5/8" REBAR WITH YELLOW CAP
5424	NE 64 17'23"	120.72	985	CUT CROSS IN TOP OF CURB
5432	NE 01 27'22"	65.07	984	CUT CROSS IN TOP OF CURB
5432	NW 32 07'31"	99.11	985	CUT CROSS IN TOP OF CURB
5432	NW 57 18'57"	29.69	986	CUT CROSS ON MANHOLE LID IN ROAD
5433	NE 01 54'01"	85.79	984	CUT CROSS IN TOP OF CURB
5433	NW 26 12'44"	116.83	985	CUT CROSS IN TOP OF CURB
5433	NW 32 56'30"	43.77	986	CUT CROSS ON MANHOLE LID IN ROAD
5439	NE 38 53'32"	116.51	983	CUT CROSS ON MANHOLE LID IN ROAD
5439	NE 59 19'54"	67.63	984	CUT CROSS IN TOP OF CURB
5439	NE 04 04'48"	53.52	985	CUT CROSS IN TOP OF CURB
5440	NE 30 49'02"	128.78	983	CUT CROSS ON MANHOLE LID IN ROAD
5440	NE 43 08'33"	74.57	984	CUT CROSS IN TOP OF CURB
5440	NW 02 37'51"	73.37	985	CUT CROSS IN TOP OF CURB
5441	NE 29 20'52"	135.79	983	CUT CROSS ON MANHOLE LID IN ROAD
5441	NE 39 40'23"	80.78	984	CUT CROSS IN TOP OF CURB
5441	NW 01 58'14"	81.11	985	CUT CROSS IN TOP OF CURB
5442	NE 26 02'10"	154.28	983	CUT CROSS ON MANHOLE LID IN ROAD
5442	NE 32 36'31"	97.86	984	CUT CROSS IN TOP OF CURB
5442	NW 00 50'04"	101.37	985	CUT CROSS IN TOP OF CURB
5445	NE 07 46'23"	93.21	983	CUT CROSS ON MANHOLE LID IN ROAD
5445	NW 03 45'35"	36.24	984	CUT CROSS IN TOP OF CURB
5445	NW 45 51'50"	79.05	985	CUT CROSS IN TOP OF CURB
5447	NW 37 05'02"	135.74	983	CUT CROSS ON MANHOLE LID IN ROAD
5447	NW 61 43'04"	109.96	984	CUT CROSS IN TOP OF CURB
5447	NW 64 54'55"	167.03	985	CUT CROSS IN TOP OF CURB

LEGEND



Bearings are referenced to the Illinois Coordinate System, NAD83, East Zone, as provided by the Illinois Department of Transportation.

- IRON PIPE OR ROD FOUND
- ⊕ "MAG" NAIL SET
- + CUT CROSS FOUND OR SET
- 5/8" REBAR SET
- T1, T2, T3 THESE STAKES REFERENCE FOUND OR SET MONUMENTATION. SET 5/8 INCH IRON ROD FLUSH WITH GROUND TO TIE FOUND IRON STAKE IDENTIFIED BY COLORED PLASTIC CAP BEARING SURVEYORS REGISTRATION NUMBER.
- BT1, BT2, BT3 THESE STAKES, IN CULTIVATED AREAS, REFERENCE FOUND OR SET MONUMENTATION. BURIED 5/8 INCH IRON ROD 20 INCHES BELOW GROUND TO TIE FOUND IRON STAKE. IDENTIFIED BY COLORED PLASTIC CAP BEARING SURVEYORS REGISTRATION NUMBER.
- STAKING OF PROPOSED RIGHT OF WAY. SET DIVISION OF HIGHWAYS SURVEY MARKER TO MONUMENT THE POSITION SHOWN, IDENTIFIED BY INSCRIPTION DATA AND SURVEYORS REGISTRATION NUMBER.
- M STAKING OF PROPOSED RIGHT OF WAY IN CULTIVATED AREAS. BURIED 5/8 INCH METAL ROD 20 INCHES BELOW GROUND TO MARK FUTURE SURVEY MARKER POSITION IDENTIFIED BY COLORED PLASTIC CAP BEARING SURVEYORS REGISTRATION NUMBER.
- ⊙ PERMANENT SURVEY MARKER, I.D.O.T. STANDARD 2135 (TO BE SET BY OTHERS)
- RIGHT OF WAY STAKING PROPOSED TO BE SET

STATE OF ILLINOIS)
 COUNTY OF WILL)
 THIS IS TO CERTIFY THAT I, RONALD F. HODGEN, AN ILLINOIS PROFESSIONAL LAND SURVEYOR, (WE, RUETTIGER, TONELLI & ASSOCIATES, AN ILLINOIS PROFESSIONAL DESIGN FIRM LAND SURVEYING CORPORATION, NUMBER 89,) HAVE SURVEYED THE PLAT OF HIGHWAYS SHOWN HEREON IN SECTION 22, TOWNSHIP 41 NORTH, RANGE 8 EAST OF THE THIRD PRINCIPAL MERIDIAN, KANE COUNTY, THAT THE SURVEY IS TRUE AND COMPLETE AS SHOWN TO THE BEST OF MY KNOWLEDGE AND BELIEF, THAT THE PLAT CORRECTLY REPRESENTS SAID SURVEY, THAT ALL MONUMENTS FOUND AND ESTABLISHED ARE OF PERMANENT QUALITY AND OCCUPY THE POSITIONS SHOWN THEREON AND THAT THE MONUMENTS ARE SUFFICIENT TO ENABLE THE SURVEY TO BE RETRACED, MADE FOR THE DEPARTMENT OF TRANSPORTATION, STATE OF ILLINOIS.

DATED AT JOLIET, ILLINOIS THIS 11th DAY OF May 2011 A.D.

Ronald F. Hodgen



ILLINOIS PROFESSIONAL LAND SURVEYOR NO. 2630
 LICENSE EXPIRATION DATE: 11-30-2012
 THIS PROFESSIONAL SERVICE CONFORMS TO THE CURRENT ILLINOIS MINIMUM STANDARDS FOR A BOUNDARY SURVEY.

RUETTIGER, TONELLI & ASSOCIATES, INC.
 Land Surveyors/Engineers/Planners/Landscape Architects/G.I.S. Consultants
 2174 ONEIDA STREET
 JOLIET, ILLINOIS 60435
 PH. (815) 744-6600 FAX (815) 744-0101

PLAT OF HIGHWAYS
 STATE OF ILLINOIS
 DEPARTMENT OF TRANSPORTATION
 FAP 345 (US 20)

RECEIVED
 MAY 12 2011
 PLATS & LEGALS

SECTION: COUNTY: KANE
 PROJECT: JOB NO.: R-91-017-01
 STATION 110+00 TO STATION 115+00
 SCALE: 1" = 20' SHEET 39 OF 41

BUREAU OF LAND ACQUISITION
 201 WEST CENTER COURT
 SCHAMBURG, ILLINOIS 60196

MADE BY

PROP. CURVEIDOT_P-2
 PI STA. =105+57.25
 Δ =20° 04' 26" (LT)
 D =0° 53' 20"
 R =6,446.67'
 T =1,141.01'
 L =2,258.64'
 E =100.20'
 T.R. =
 S.E. RUN =
 P.C. STA =94+16.23
 P.T. STA =116+74.87

FAP 345 (US 20)

STATION	OFFSET	PT#	NORTH	EAST	COORDINATES SHOWN HEREON ARE ILLINOIS STATE PLANE EAST ZONE NAD 83 (2007) GRID BASED ON NGS STATION 0120 WITH PUBLISHED COORDINATES OF NORTH 1930566.76, EAST 1004454.55.
113+05.59	-147.45	507	1950995.908	991473.127	
110+09.22	-119.97	5414	1950998.038	991181.637	
112+15.71	-95.00	5422	1950951.199	991380.774	
111+01.91	-109.59	5423	1950977.059	991270.829	
112+13.59	-117.87	5424	1950974.163	991380.815	
113+79.88	-99.32	5432	1950942.593	991542.287	
113+80.08	-78.59	5433	1950921.896	991541.096	
113+20.27	-125.74	5439	1950973.149	991485.773	
113+29.10	-106.43	5440	1950953.233	991492.949	
113+29.10	-98.64	5441	1950945.466	991492.370	
113+29.46	-78.35	5442	1950925.208	991491.204	
113+82.00	-128.42	5445	1950971.481	991546.317	
114+79.09	-118.11	5447	1950955.544	991640.771	

REVISION DATE:

REVISION