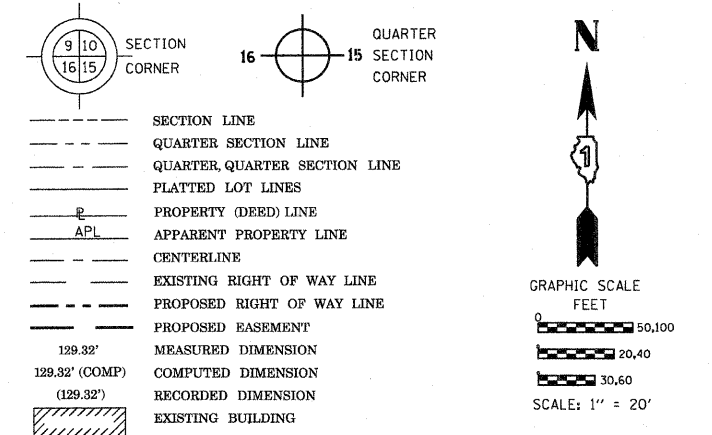


PART OF THE NE 14 OF SECTION 22, TWP. 41 N., R.8 E. OF THE 3RD. P.M., IN KANE COUNTY, ILLINOIS.

FROM	BEARING/ANGLE	DISTANCE	TO	DESCRIPTION
5399	NE 05 42'20"	46.20	963	CUT CROSS IN MANHOLE RIM
5399	NE 20 57'18"	73.95	964	CUT CROSS IN MANHOLE RIM
5399	NE 60 40'10"	171.84	965	CUT CROSS IN TOP OF CURB
5401	NW 34 20'36"	56.76	963	CUT CROSS IN MANHOLE RIM
5401	NW 08 16'08"	70.68	964	CUT CROSS IN MANHOLE RIM
5401	NE 53 04'35"	141.60	965	CUT CROSS IN TOP OF CURB
5499	NE 61 37'43"	416.25	963	CUT CROSS IN MANHOLE RIM
5499	NE 60 21'16"	446.56	964	CUT CROSS IN MANHOLE RIM
5499	NE 65 13'51"	563.29	965	CUT CROSS IN TOP OF CURB
5454	SE 50 33'00"	39.41	963	CUT CROSS IN MANHOLE RIM
5454	SE 87 51'32"	52.32	964	CUT CROSS IN MANHOLE RIM
5454	NE 85 42'54"	176.14	965	CUT CROSS IN TOP OF CURB
5455	NE 85 12'15"	125.01	963	CUT CROSS IN MANHOLE RIM
5455	NE 77 05'59"	150.22	964	CUT CROSS IN MANHOLE RIM
5455	NE 79 46'38"	274.14	965	CUT CROSS IN TOP OF CURB
5459	NW 62 41'26"	59.09	963	CUT CROSS IN MANHOLE RIM
5459	NW 31 24'38"	58.82	964	CUT CROSS IN MANHOLE RIM
5459	NE 54 50'05"	113.41	965	CUT CROSS IN TOP OF CURB
5461	SW 87 24'51"	69.41	963	CUT CROSS IN MANHOLE RIM
5461	NW 67 12'24"	51.51	964	CUT CROSS IN MANHOLE RIM
5461	NE 65 11'38"	83.59	965	CUT CROSS IN TOP OF CURB
5464	SW 79 09'05"	159.81	963	CUT CROSS IN MANHOLE RIM
5464	SW 87 02'14"	135.28	964	CUT CROSS IN MANHOLE RIM
5464	NW 55 17'59"	14.27	965	CUT CROSS IN TOP OF CURB
5485	NW 81 50'44"	168.95	963	CUT CROSS IN MANHOLE RIM
5485	NW 72 04'02"	152.81	964	CUT CROSS IN MANHOLE RIM
5485	NW 19 30'18"	65.95	965	CUT CROSS IN TOP OF CURB
5486	NW 81 36'45"	167.28	963	CUT CROSS IN MANHOLE RIM
5486	NW 71 42'20"	151.28	964	CUT CROSS IN MANHOLE RIM
5486	NW 17 56'26"	65.80	965	CUT CROSS IN TOP OF CURB
5489	NW 77 26'53"	174.96	963	CUT CROSS IN MANHOLE RIM
5489	NW 67 41'23"	160.97	964	CUT CROSS IN MANHOLE RIM
5489	NW 18 32'12"	80.40	965	CUT CROSS IN TOP OF CURB
8025	NW 13 26'14"	130.42	963	CUT CROSS IN MANHOLE RIM
8025	NW 03 13'36"	150.17	964	CUT CROSS IN MANHOLE RIM
8025	NE 34 50'46"	201.11	965	CUT CROSS IN TOP OF CURB

LEGEND



Bearings are referenced to the Illinois Coordinate System, NAD83, East Zone, as provided by the Illinois Department of Transportation.

- IRON PIPE OR ROD FOUND
- ⊕ "MAG" NAIL SET
- + CUT CROSS FOUND OR SET
- 5/8" REBAR SET
- T1 THESE STAKES REFERENCE FOUND OR SET MONUMENTATION. SET 5/8 INCH IRON ROD FLUSH WITH GROUND TO TIE FOUND IRON STAKE IDENTIFIED BY COLORED PLASTIC CAP BEARING SURVEYORS REGISTRATION NUMBER.
- T2
- T3
- BT1 THESE STAKES, IN CULTIVATED AREAS, REFERENCE FOUND OR SET MONUMENTATION. BURIED 5/8 INCH IRON ROD 20 INCHES BELOW GROUND TO TIE FOUND IRON STAKE. IDENTIFIED BY COLORED PLASTIC CAP BEARING SURVEYORS REGISTRATION NUMBER.
- BT2
- BT3
- STAKING OF PROPOSED RIGHT OF WAY. SET DIVISION OF HIGHWAYS SURVEY MARKER TO MONUMENT THE POSITION SHOWN. IDENTIFIED BY INSCRIPTION DATA AND SURVEYORS REGISTRATION NUMBER.
- M STAKING OF PROPOSED RIGHT OF WAY IN CULTIVATED AREAS. BURIED 5/8 INCH METAL ROD 20 INCHES BELOW GROUND TO MARK FUTURE SURVEY MARKER POSITION IDENTIFIED BY COLORED PLASTIC CAP BEARING SURVEYORS REGISTRATION NUMBER.
- ⊙ PERMANENT SURVEY MARKER, I.D.O.T. STANDARD 2135 (TO BE SET BY OTHERS)
- RIGHT OF WAY STAKING PROPOSED TO BE SET

STATE OF ILLINOIS )  
 ) S.S.  
 COUNTY OF Will )  
 THIS IS TO CERTIFY THAT I, RONALD F. HODGEN, AN ILLINOIS PROFESSIONAL LAND SURVEYOR, (WE, RUETTIGER, TONELLI & ASSOCIATES, AN ILLINOIS PROFESSIONAL DESIGN FIRM LAND SURVEYING CORPORATION, NUMBER 89,) HAVE SURVEYED THE PLAT OF HIGHWAYS SHOWN HEREON IN SECTION 22, TOWNSHIP 41 NORTH, RANGE 8 EAST OF THE THIRD PRINCIPAL MERIDIAN, KANE COUNTY, THAT THE SURVEY IS TRUE AND COMPLETE AS SHOWN TO THE BEST OF MY KNOWLEDGE AND BELIEF, THAT THE PLAT CORRECTLY REPRESENTS SAID SURVEY, THAT ALL MONUMENTS FOUND AND ESTABLISHED ARE OF PERMANENT QUALITY AND OCCUPY THE POSITIONS SHOWN THEREON AND THAT THE MONUMENTS ARE SUFFICIENT TO ENABLE THE SURVEY TO BE RETRACED, MADE FOR THE DEPARTMENT OF TRANSPORTATION, STATE OF ILLINOIS.

DATED AT Joliet, ILLINOIS THIS 11th DAY OF May, 2011 A.D.

*Ronald F. Hodgen*



ILLINOIS PROFESSIONAL LAND SURVEYOR NO. 2630  
 LICENSE EXPIRATION DATE: 11-30-2012  
 THIS PROFESSIONAL SERVICE CONFORMS TO THE CURRENT ILLINOIS MINIMUM STANDARDS FOR A BOUNDARY SURVEY.

RUETTIGER, TONELLI & ASSOCIATES, INC.  
 Land Surveyors/Engineers/Planners/Landscape Architects/G.I.S. Consultants

PLAT OF HIGHWAYS  
 STATE OF ILLINOIS  
 DEPARTMENT OF TRANSPORTATION  
 FAP 345 (US 20)

SECTION: COUNTY: KANE  
 PROJECT JOB NO.: R-91-017-01  
 STATION 115+00 TO STATION 119+00  
 SCALE: 1" = 20' SHEET 40 OF 41

BUREAU OF LAND ACQUISITION  
 201 WEST CENTER COURT  
 SCHAMBURG, ILLINOIS 60196

RECEIVED  
 MAY 12 2011  
 PLATS & LEGALS

MADE BY

SEE CONTINUATION ON SHEET 39

SEE CONTINUATION ON SHEET 41

PROP. CURVEIDOT\_P-2  
 PI STA. =105+57.25  
 Δ =20° 04' 26" (LT)  
 D =0° 53' 20"  
 R =6,446.67'  
 T =1,141.01'  
 L =2,258.64'  
 E =100.20'  
 e = -----  
 T.R. = -----  
 S.E. RUN = -----  
 P.C. STA =94+16.23  
 P.T. STA =116+74.87

COORDINATE TABLE

STATION	OFFSET	PT#	NORTH	EAST
116+03.07	-79.71	5399	1950912.031	991761.124
116+40.16	-79.91	5401	1950911.142	991797.736
116+85.77	-80.00	5449	1950910.599	991823.030
115+27.47	-130.33	5453	1950965.473	991688.755
115+74.27	-149.78	5454	1950983.045	991735.286
114+79.89	-110.15	5455	1950947.552	991641.142
116+80.42	-100.17	5459	1950930.891	991818.225
116+76.83	-130.79	5461	1950961.136	991835.056
117+63.84	-159.61	5464	1950988.082	991922.667
117+75.28	-105.80	5485	1950934.040	991932.954
117+73.54	-105.32	5486	1950933.604	991931.203
117+79.12	-91.82	5489	1950919.981	991936.493
118+40.84	-91.16	5490	1950918.002	991998.178
118+90.48	-90.64	5491	1950918.409	992047.787
116+74.87	0.00	8192	1950830.420	991830.293

COORDINATES SHOWN HEREON ARE ILLINOIS STATE PLANE EAST ZONE NAD 83 (2007) GRID BASED ON NGS STATION 0120 WITH PUBLISHED COORDINATES OF NORTH 1930566.76, EAST 1004454.55.

REVISION DATE:

REVISION