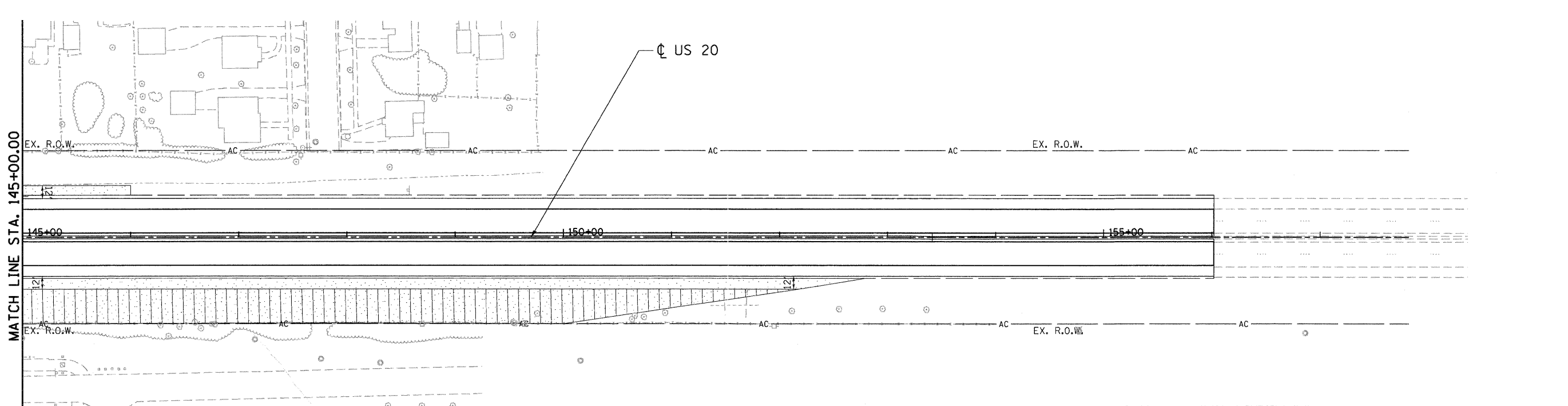
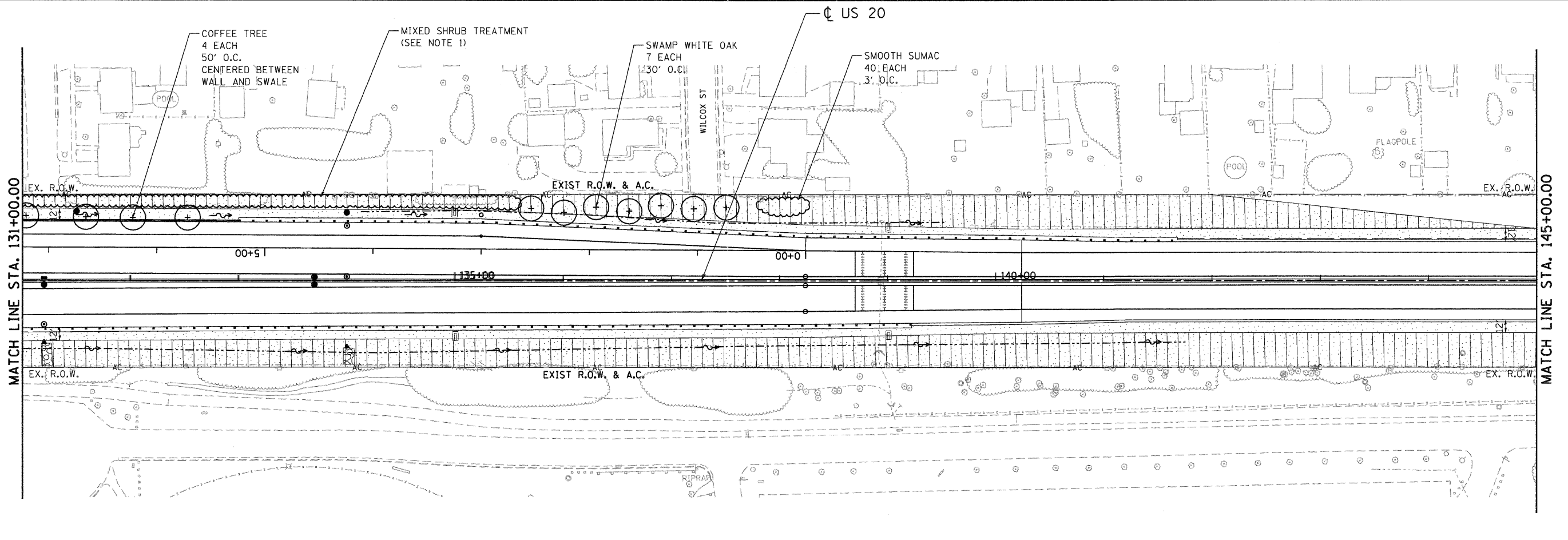


..\\D160H45-BC0D0A0.DGN ..\\D160H45-LECD0A0.DGN ..\\D160H45-TOP0F.DGN ..\\D160H45-LN0SCPP02.DGN ..\\D160H45-DESIGN0A0.DGN ..\\D160H45-DRAINP0LDD0A0.DGN
 ..\\D160H45-BC0D0A0.DGN ..\\D160H45-LECD0A0.DGN ..\\D160H45-TOP0F.DGN ..\\D160H45-LN0SCPP02.DGN ..\\D160H45-DESIGN0A0.DGN ..\\D160H45-DRAINP0LDD0A0.DGN
 ..\\D160H45-BC0D0A0.DGN ..\\D160H45-LECD0A0.DGN ..\\D160H45-TOP0F.DGN ..\\D160H45-LN0SCPP02.DGN ..\\D160H45-DESIGN0A0.DGN ..\\D160H45-DRAINP0LDD0A0.DGN



NOTE:
 1. THE MIXED SHRUB TREATMENT SHALL CONSIST OF BLACK CHOKE BERRY (325 EACH) AND ARROWWOOD VIBURNUM (325 EACH) IN GROUPS OF 65 EACH BETWEEN APPROXIMATE STATION 126+00 AND 135+00. THE SHRUBS SHALL BE SPACED AT 3' O.C. IN 2 ROWS STAGGERED MULCH PLACEMENT 4".

	TOPSOIL FURNISH AND PLACE, 6" SODDING, SALT TOLERANT		SEEDING, CLASS 4 WITH COMPOST FURNISH AND PLACE, 2" PLUS TOPSOIL FURNISH AND PLACE, 4" AND EROSION CONTROL BLANKET
	TOPSOIL FURNISH AND PLACE, 6" SEEDING CLASS 2A WITH EROSION CONTROL BLANKET		SEEDING, CLASS 4B MODIFIED WITH COMPOST FURNISH AND PLACE, 2" PLUS TOPSOIL FURNISH AND PLACE, 4" AND MULCH, METHOD 2

FILE NAME = #FILEL#	USER NAME = #USER#	DESIGNED -	REVISED -
TENG & ASSOCIATES, INC. ENGINEERS/ARCHITECTS/PLANNERS CHICAGO, ILLINOIS	PLOT SCALE = #SCALE#	DRAWN - JFS	REVISED -
	PLOT DATE = #DATE#	CHECKED - DDH	REVISED -
		DATE - 12/16/11	REVISED -

STATE OF ILLINOIS
DEPARTMENT OF TRANSPORTATION
 FAP ROUTE 345 / US ROUTE 20

LANDSCAPING PLANS		F.A.P. RTE.	SECTION	COUNTY	TOTAL SHEETS	SHEET NO.
U.S. ROUTE 20		345	8R-R	KANE	794	381
SCALE: 1"=50'	SHEET NO. OF SHEETS	STA. 131+00.00 TO STA. 156+00.00		FED. ROAD DIST. NO.	ILLINOIS FED. AID PROJECT	
				CONTRACT NO. 60H45		