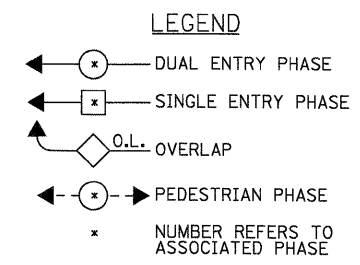
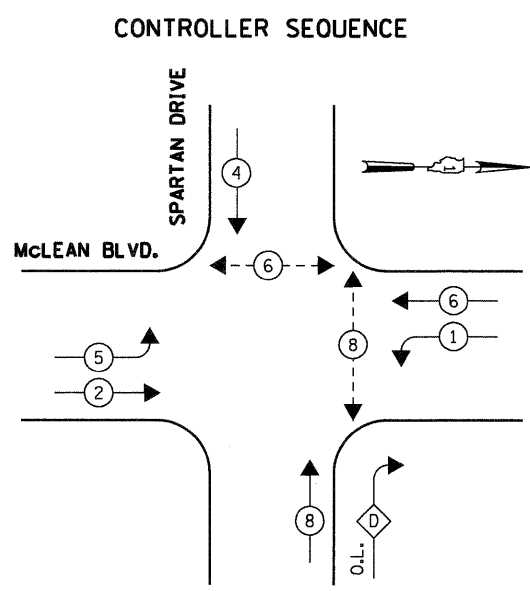


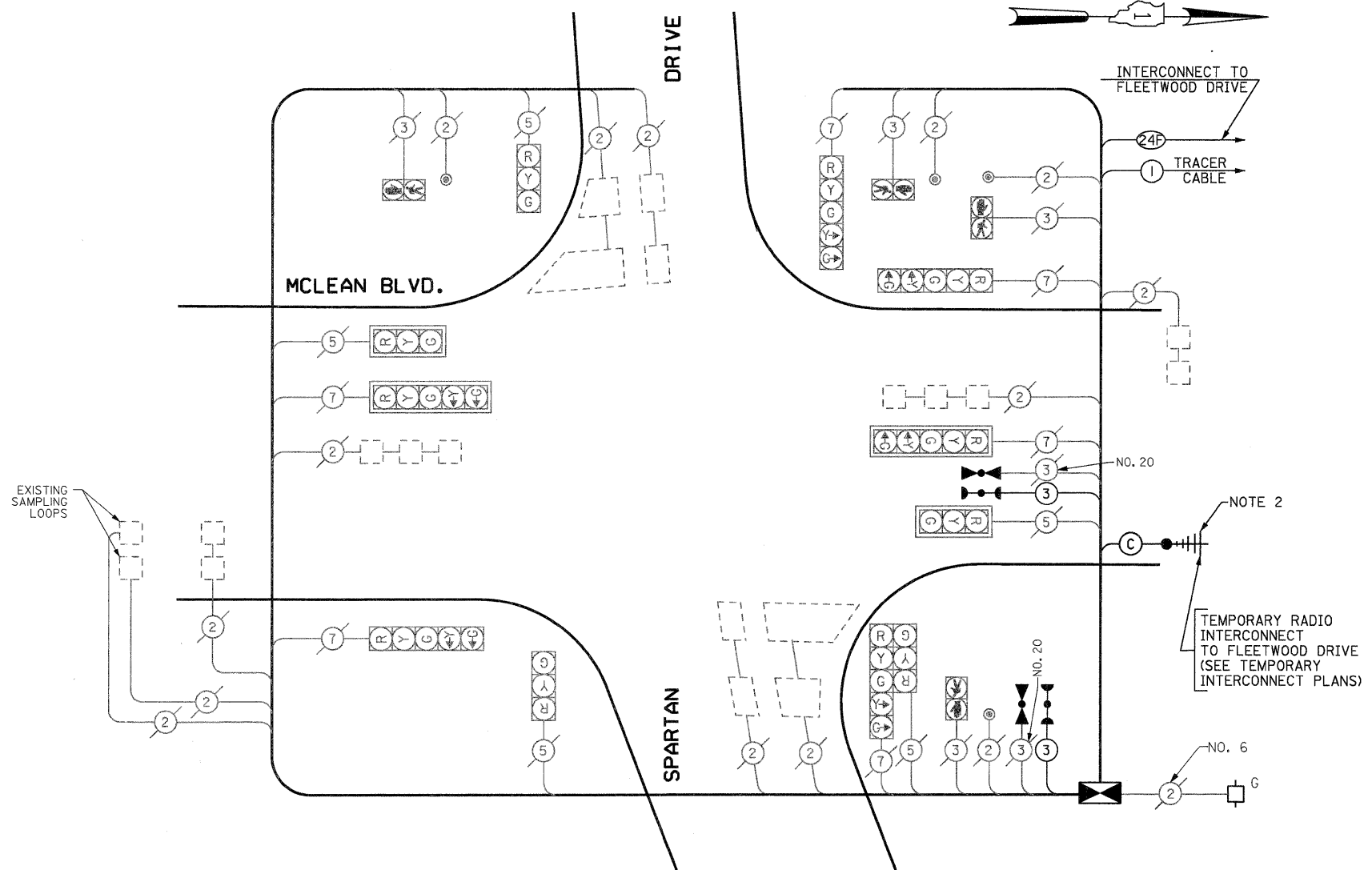
OVERLAP LETTER PERMISSIVE PHASE PROTECTED PHASE  
 D = 8 + 5

**EXISTING PHASE DESIGNATION DIAGRAM**



OVERLAP LETTER PERMISSIVE PHASE PROTECTED PHASE  
 D = 8 + 1

**MODIFIED PHASE DESIGNATION DIAGRAM**

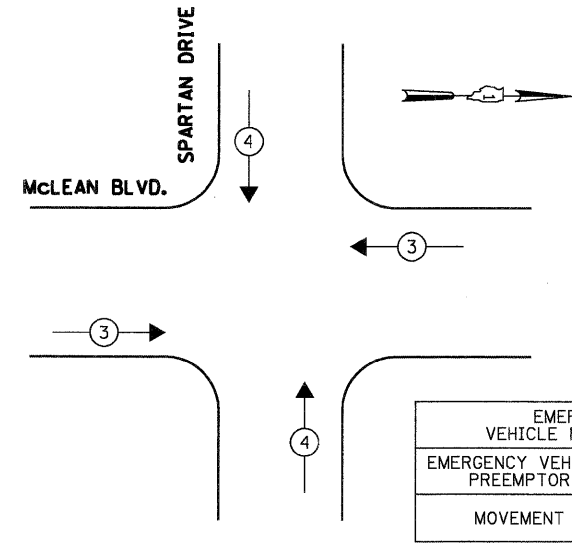


**MODIFIED CABLE PLAN**  
(NOT TO SCALE)

NOTE 1: THE "EAGLE" CONTROLLER SHALL BE INSTALLED ALONG WITH THE TEMPORARY SIGNAL WORK IN THE MAIN CONTRACT "60H45".

NOTE 2: THE TEMPORARY WIRELESS INTERCONNECT SHALL BE DISCONNECTED AT THE CONTROLLER AND REMOVED AFTER THE PROPOSED FIBER OPTIC INTERCONNECT SYSTEM IS IN PLACE AND IN OPERATION.

**EMERGENCY VEHICLE PREEMPTION SEQUENCE**



**SCHEDULE OF QUANTITIES**

QUANTITY	UNIT	ITEM
1	EACH	MAINTENANCE OF EXISTING TRAFFIC SIGNAL INSTALLATION
1	EACH	TRANSCEIVER-FIBER OPTIC
137	FOOT	ELECTRIC CABLE IN CONDUIT, SIGNAL NO. 14 3C
10	EACH	INDUCTIVE LOOP DETECTOR
2	EACH	LIGHT DETECTOR
1	EACH	LIGHT DETECTOR AMPLIFIER
1	EACH	REMOVE EXISTING TRAFFIC SIGNAL EQUIPMENT
1	EACH	FULL-ACTUATED CONTROLLER AND CABINET, TYPE IV, SPECIAL

• 100% COST TO CITY OF ELGIN

THE TRAFFIC SIGNAL CONTROL EQUIPMENT FOR THIS PROJECT SHALL BE "EAGLE" TO MATCH THE EXISTING ADJACENT SYSTEM.

I.D.O.T. TRAFFIC SIGNAL INSTALLATION ELECTRICAL SERVICE REQUIREMENTS

TYPE	NO LAMPS	WATTAGE		OPERATION	TOTAL WATTAGE
		INCAND.	LED		
SIGNAL (RED)	11	135	17	0.50	93.50
(YELLOW)	11	135	25	0.25	68.75
(GREEN)	11	135	15	0.25	41.25
ARROW	12	135	12	0.10	14.4
PED. SIGNAL	4	90	25	1.00	100.00
CONTROLLER	1	100	100	1.00	100.00
ILLUM. SIGN			25	0.05	
FLASHER				0.50	
ENERGY COSTS TO:				TOTAL =	417.9

ENERGY SUPPLY CONTACT: ELLIE SARALLO  
 PHONE: (630) 424 5124  
 COMPANY: COMMONWEALTH EDISON