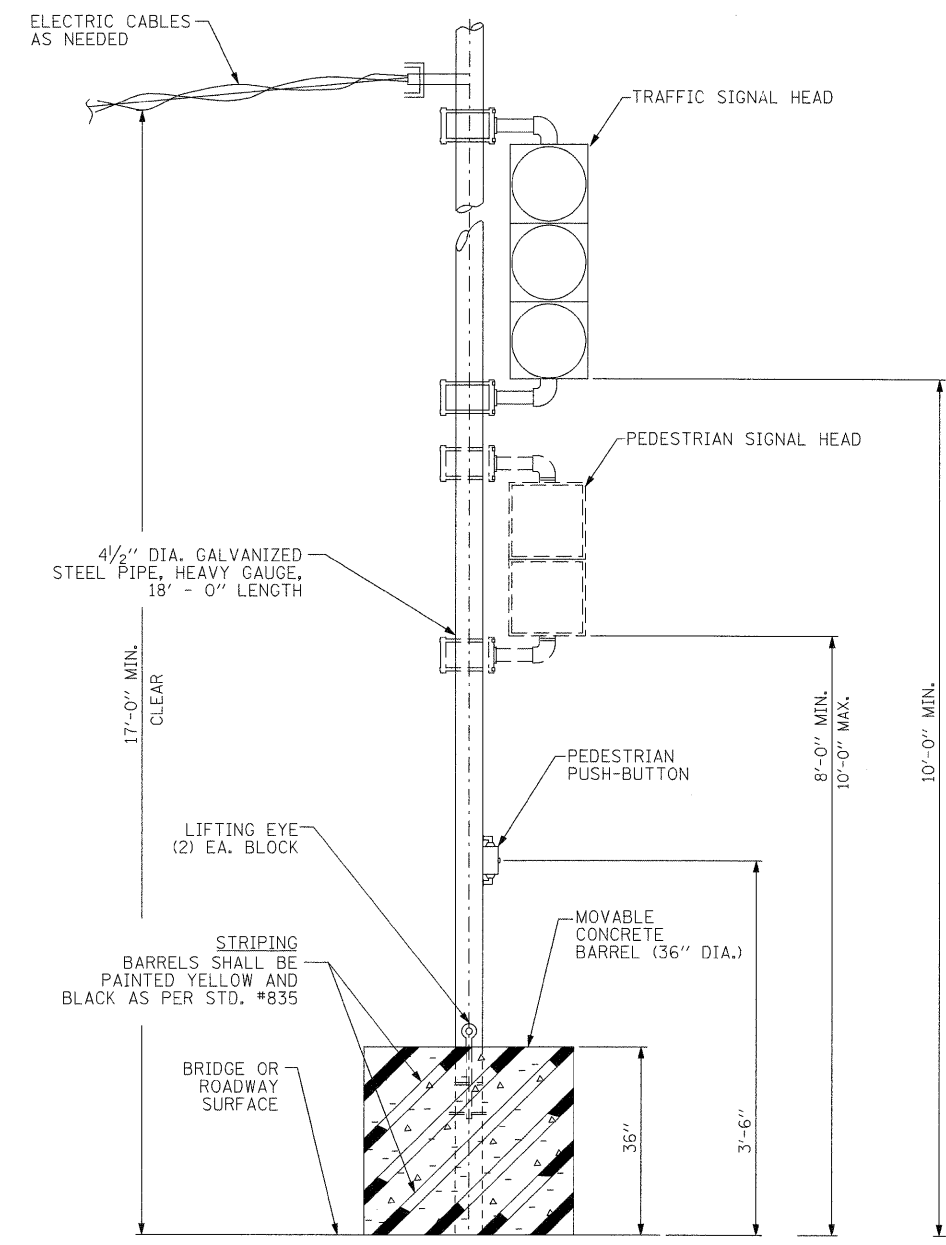




LEGEND
 TEMPORARY CONCRETE BARREL WITH POST FOR SIGNAL HEAD, PEDESTRIAN SIGNALS AND PUSH-BUTTONS **(B)**

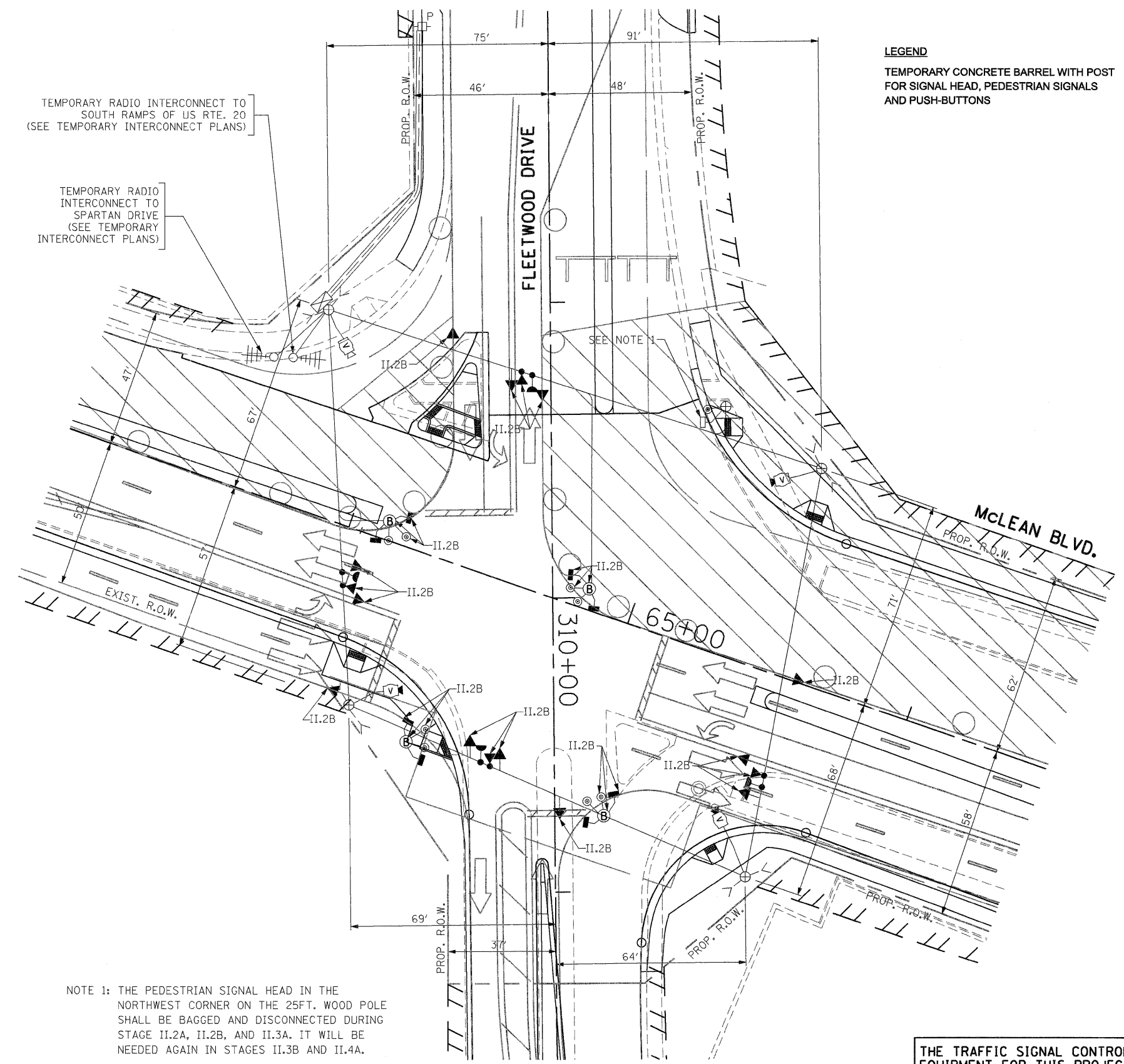


N.T.S.

NOTE: POSITIONING OF TEMPORARY CONCRETE BARREL WITH POST SHALL BE AS PER PLAN AND AS DIRECTED BY THE ENGINEER AND SHALL NOT CONFLICT WITH OR IMPEDE TRAFFIC IN ANY CONDITION

TEMPORARY RADIO INTERCONNECT TO SOUTH RAMPS OF US RTE. 20 (SEE TEMPORARY INTERCONNECT PLANS)

TEMPORARY RADIO INTERCONNECT TO SPARTAN DRIVE (SEE TEMPORARY INTERCONNECT PLANS)



NOTE 1: THE PEDESTRIAN SIGNAL HEAD IN THE NORTHWEST CORNER ON THE 25FT. WOOD POLE SHALL BE BAGGED AND DISCONNECTED DURING STAGE II.2A, II.2B, AND II.3A. IT WILL BE NEEDED AGAIN IN STAGES II.3B AND II.4A.

SIGNAL HEAD PLACEMENTS FOR STAGE: II.2B

THE TRAFFIC SIGNAL CONTROL EQUIPMENT FOR THIS PROJECT SHALL BE "EAGLE" TO MATCH THE EXISTING ADJACENT SYSTEM.

FILE NAME = #FILE#	USER NAME = #USER#	DESIGNED - PKG	REVISED -	STATE OF ILLINOIS DEPARTMENT OF TRANSPORTATION	TEMPORARY TRAFFIC SIGNAL PLAN McLEAN BOULEVARD AT FLEETWOOD DRIVE STAGE II.2B (SHEET 3 OF 10)			F.A.P. RTE. 345	SECTION BR-R	COUNTY KANE	TOTAL SHEETS 794	SHEET NO. 395
	PLOT SCALE = #SCALE#	DRAWN - MAA, EA	REVISED -		SCALE: 1"=20'	SHEET NO.	OF SHEETS	STA.	TO STA.	CONTRACT NO. 60H45		
	PLOT DATE = #DATE#	CHECKED - PKG	REVISED -							FED. ROAD DIST. NO. - [ILLINOIS] FED. AID PROJECT		
		DATE - 02/10/2012	REVISED -									