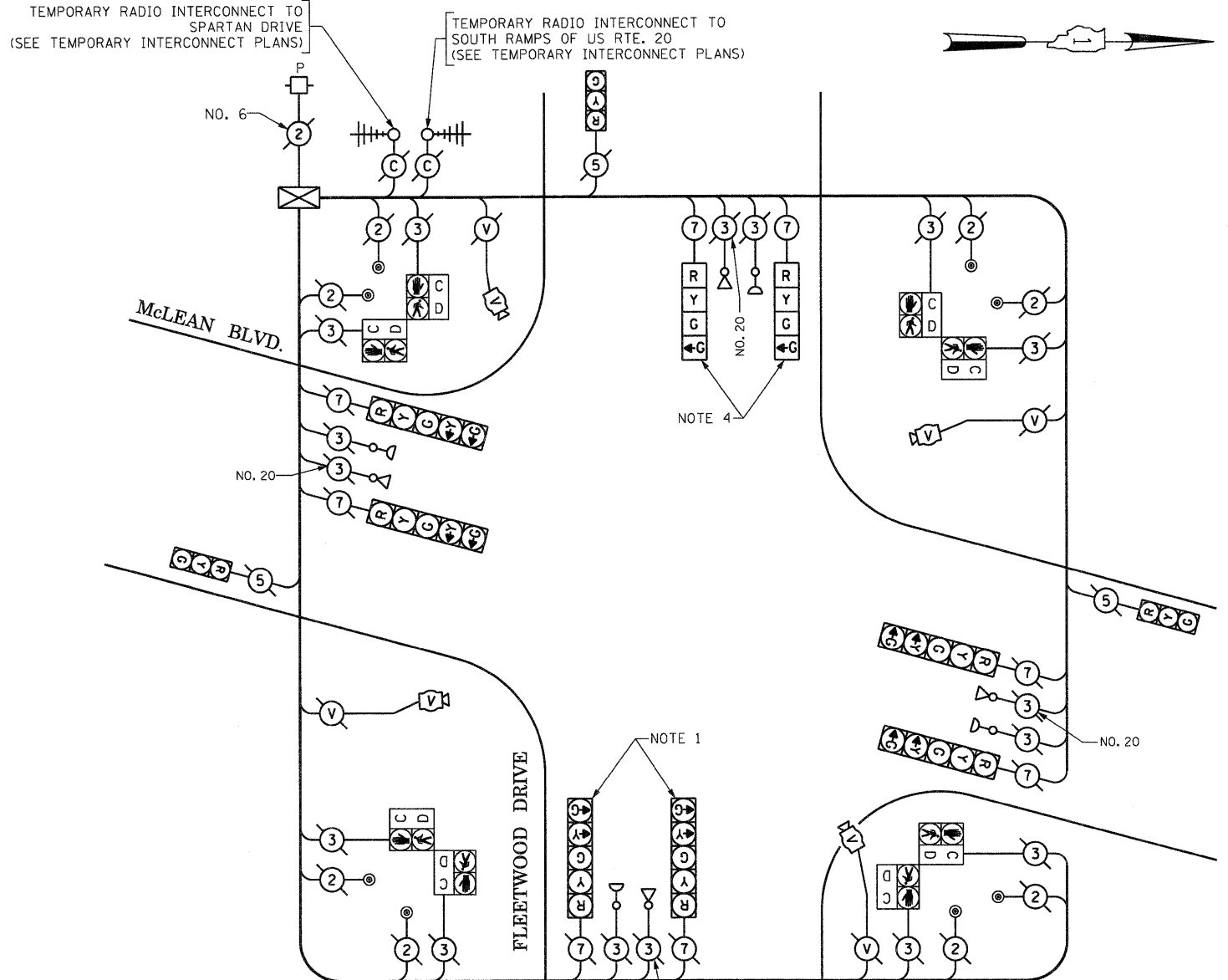
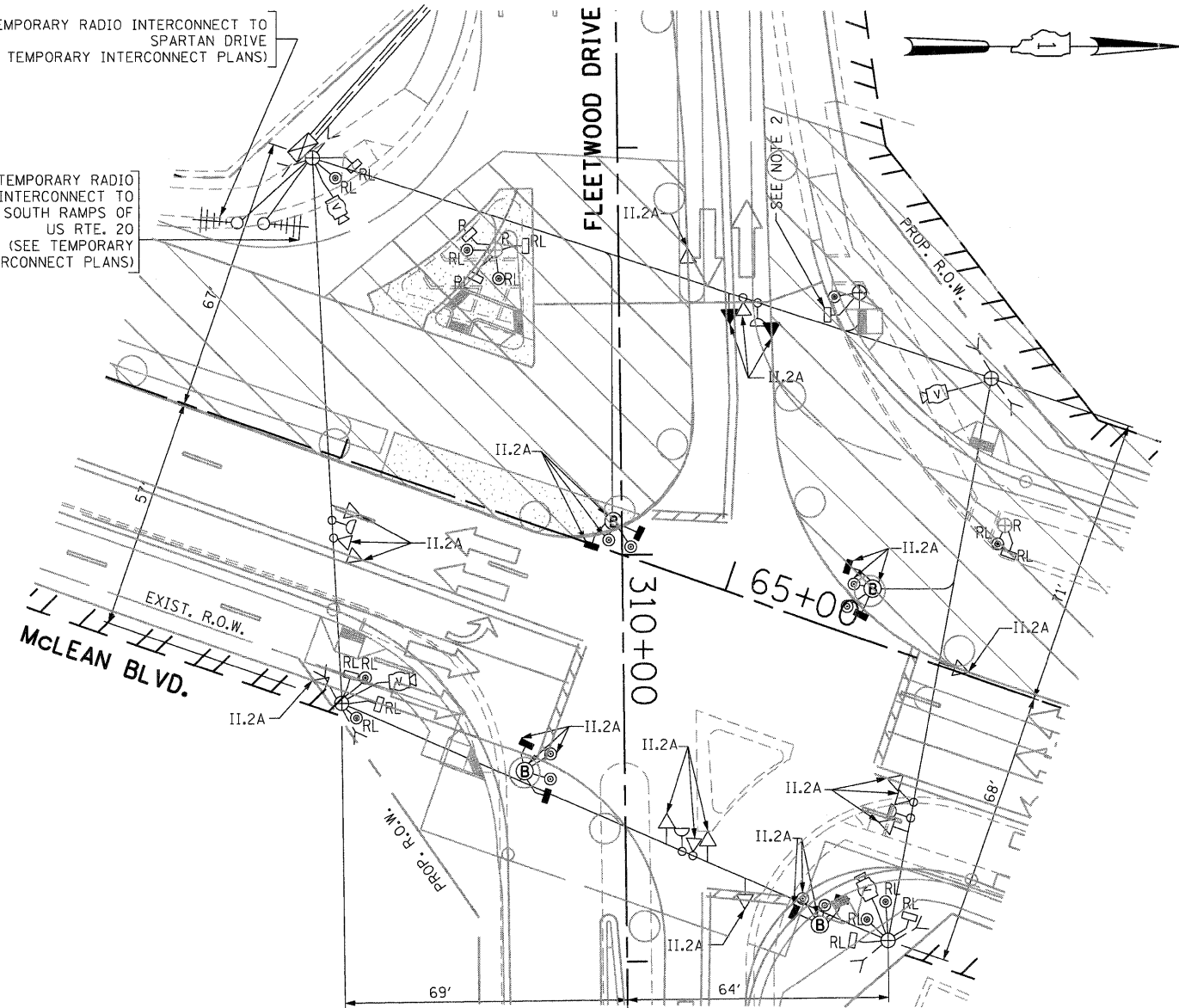


TEMPORARY RADIO INTERCONNECT TO SPARTAN DRIVE (SEE TEMPORARY INTERCONNECT PLANS)

TEMPORARY RADIO INTERCONNECT TO SOUTH RAMPS OF US RTE. 20 (SEE TEMPORARY INTERCONNECT PLANS)

TEMPORARY RADIO INTERCONNECT TO SPARTAN DRIVE (SEE TEMPORARY INTERCONNECT PLANS)

TEMPORARY RADIO INTERCONNECT TO SOUTH RAMPS OF US RTE. 20 (SEE TEMPORARY INTERCONNECT PLANS)



SIGNAL HEAD PLACEMENTS FOR STAGE: II.2A

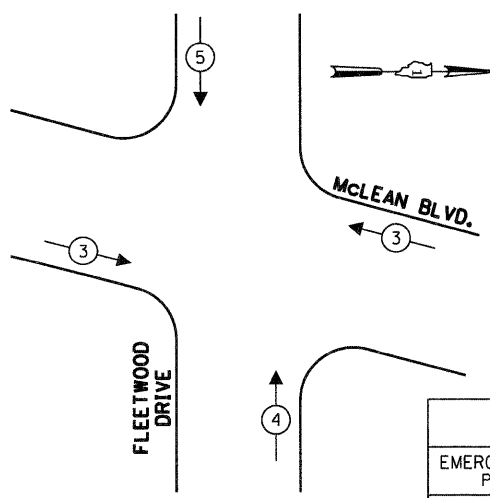
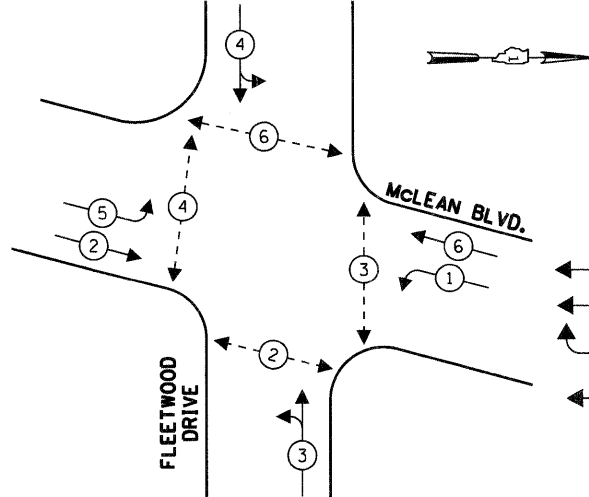
TEMPORARY CABLE PLAN

THE TRAFFIC SIGNAL CONTROL EQUIPMENT FOR THIS PROJECT SHALL BE "EAGLE" TO MATCH THE EXISTING ADJACENT SYSTEM.

LEGEND
 TEMPORARY CONCRETE BARREL WITH POST FOR PEDESTRIAN SIGNALS AND PUSH-BUTTONS (B)

CONTROLLER SEQUENCE

TEMPORARY EMERGENCY VEHICLE PREEMPTION SEQUENCE



LEGEND
 * DUAL ENTRY PHASE
 * SINGLE ENTRY PHASE
 O.L. OVERLAP
 * PEDESTRIAN PHASE NUMBER REFERS TO ASSOCIATED PHASE

TEMPORARY PHASE DESIGNATION DIAGRAM STAGE: II.2A

STAGE: II.2A

TEMPORARY EMERGENCY VEHICLE PREEMPTORS			
EMERGENCY VEHICLE PREEMPTOR	3	4	5
MOVEMENT	←→	↑	↓

NOTE 1: THE YELLOW LEFT ARROW INDICATION SECTION IN THE 5-SECTION SIGNAL HEADS FOR THE EASTBOUND DIRECTION SHALL BE BAGGED AND DISCONNECTED AT THE CONTROLLER DURING CONSTRUCTION STAGE II.2A.

NOTE 2: THE PEDESTRIAN SIGNAL HEAD IN THE NORTHWEST CORNER ON THE 25FT. WOOD POLE SHALL BE BAGGED AND DISCONNECTED DURING STAGE II.2A, II.2B, AND II.3A. IT WILL BE NEEDED AGAIN IN STAGES II.3B AND II.4A.

NOTE 3: THE PEDESTRIAN SIGNAL HEADS MARKED AS "RL" SHALL BE RELOCATED TO THE "BARREL MOUNTED" POSTS AS SHOWN IN THE PLAN AND AS DIRECTED BY THE ENGINEER.

NOTE 4: ADD 4-SECTION SIGNAL HEADS, WITH A GREEN LEFT ARROW AND CIRCULAR GREEN, ON THE FAR SIDE SPAN WIRE FOR THE WESTBOUND TRAFFIC AS SHOWN.

I.D.O.T. TRAFFIC SIGNAL INSTALLATION ELECTRICAL SERVICE REQUIREMENTS					TOTAL WATTAGE
TYPE	NO LAMPS	WATTAGE	%OPERATION		
		INCAND. LED			
SIGNAL (RED)	12	135	17	0.50	102
(YELLOW)	12	135	25	0.25	75
(GREEN)	16	135	15	0.25	60
ARROW	8	135	12	0.10	9.6
PED. SIGNAL	8	90	25	1.00	200
CONTROLLER	1	100	100	1.00	100
ILLUM. SIGN				0.05	
VIDEO SYSTEM	1	150		1.00	150
FLASHER				0.50	
ENERGY COSTS TO:				TOTAL =	696.6

ENERGY SUPPLY CONTACT: ELLIE SARALLO
 CITY OF ELGIN
 150 DEXTER COURT
 ELGIN, ILLINOIS 60120-5570
 PHONE: (630) 424 5124
 COMPANY: COMMONWEALTH EDISON

FILE NAME =	USER NAME = #USER#	DESIGNED - PKG	REVISED -
#FILE#		DRAWN - MAA, EA	REVISED -
		CHECKED - PKG	REVISED -
		DATE - 12/16/2011	REVISED -

STATE OF ILLINOIS
 DEPARTMENT OF TRANSPORTATION

TEMPORARY TRAFFIC SIGNAL PLAN, TEMPORARY CABLE PLAN, TEMPORARY PHASE DESIGNATION DIAGRAM, AND TEMPORARY EMERGENCY VEHICLE PREEMPTION SEQUENCE McLEAN BOULEVARD AT FLEETWOOD DRIVE STAGE II.2A (SHEET 5 OF 10)

SCALE: 1"=20' SHEET NO. OF SHEETS STA. TO STA.

F.A.P. RTE. 345	SECTION BR-R	COUNTY KANE	TOTAL SHEETS 794	SHEET NO. 397
CONTRACT NO. 60H45				
FED. ROAD DIST. NO. ILLINOIS FED. AID PROJECT				