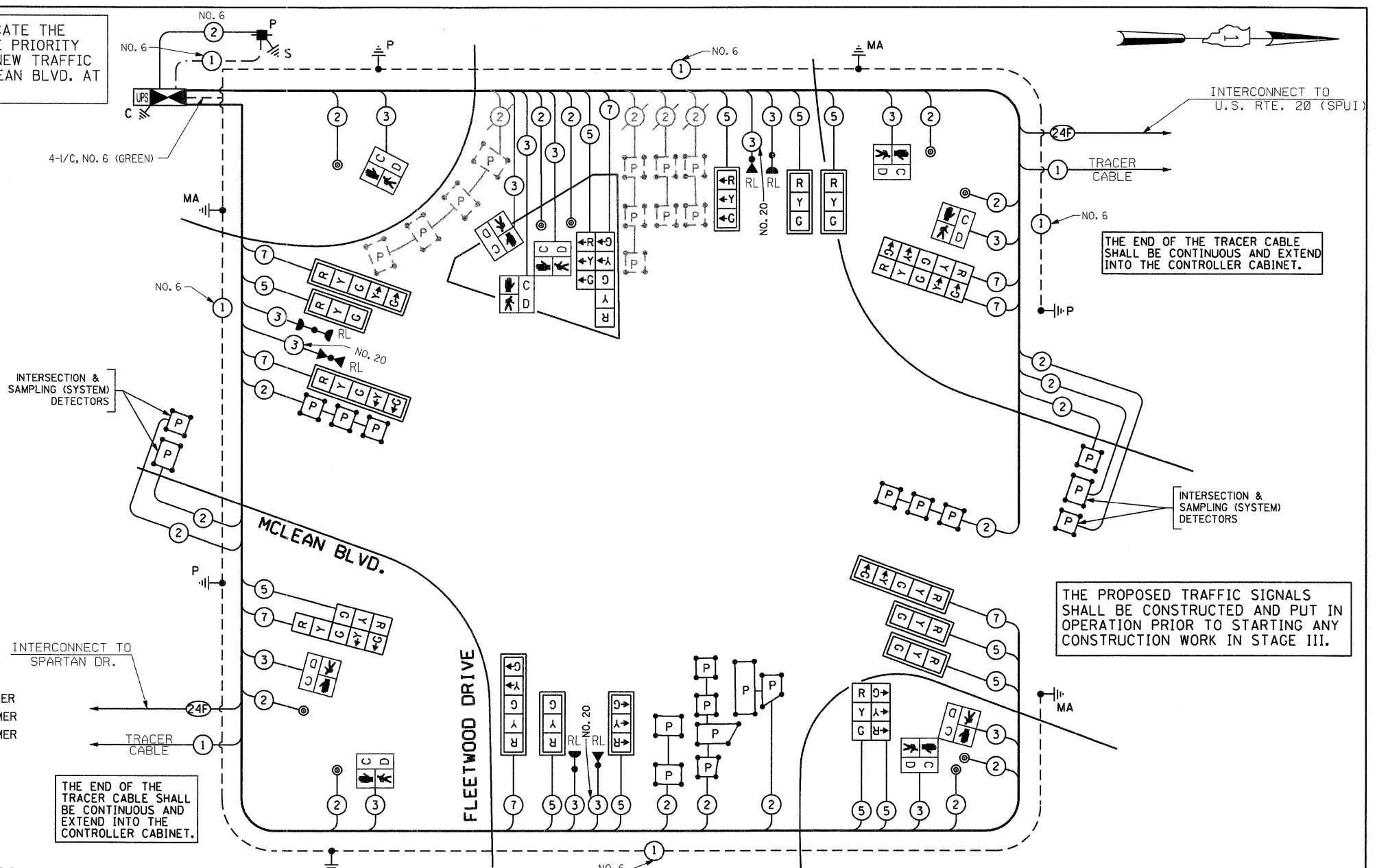


**SCHEDULE OF QUANTITIES**

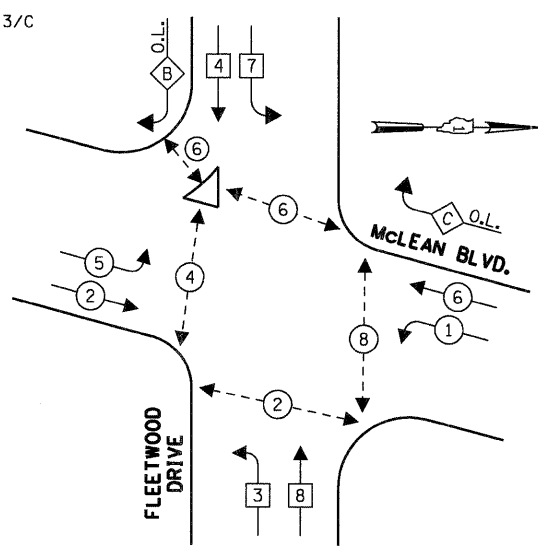
QUANTITY	UNIT	ITEM
38	SQ FT	SIGN PANEL - TYPE 1
21	SQ FT	SIGN PANEL - TYPE 2
1	EACH	SERVICE INSTALLATION - POLE MOUNTED
826	FOOT	UNDERGROUND CONDUIT, GALVANIZED STEEL, 2" DIA.
62	FOOT	UNDERGROUND CONDUIT, GALVANIZED STEEL, 2 1/2" DIA.
44	FOOT	UNDERGROUND CONDUIT, GALVANIZED STEEL, 3" DIA.
595	FOOT	UNDERGROUND CONDUIT, GALVANIZED STEEL, 4" DIA.
5	EACH	HANDHOLE
3	EACH	HEAVY-DUTY HANDHOLE
1	EACH	DOUBLE HANDHOLE
1	EACH	MAINTENANCE OF EXISTING TRAFFIC SIGNAL INSTALLATION
1	EACH	TRANSEIVER-FIBER OPTIC
1759	FOOT	ELECTRIC CABLE IN CONDUIT, SIGNAL NO. 14 2C
2611	FOOT	ELECTRIC CABLE IN CONDUIT, SIGNAL NO. 14 3C
3227	FOOT	ELECTRIC CABLE IN CONDUIT, SIGNAL NO. 14 5C
1718	FOOT	ELECTRIC CABLE IN CONDUIT, SIGNAL NO. 14 7C
3747	FOOT	ELECTRIC CABLE IN CONDUIT, LEAD-IN, NO. 14 1 PAIR
55	FOOT	ELECTRIC CABLE IN CONDUIT, SERVICE, NO. 6 2C
793	FOOT	ELECTRIC CABLE IN CONDUIT, EQUIPMENT, GROUNDING EQUIPMENT, NO. 6 1C
1	EACH	TRAFFIC SIGNAL POST, GALVANIZED STEEL 10 FT.
2	EACH	TRAFFIC SIGNAL POST, GALVANIZED STEEL 16 FT.
1	EACH	STEEL MAST ARM ASSEMBLY AND POLE, 44 FT.
2	EACH	STEEL MAST ARM ASSEMBLY AND POLE, 50 FT.
1	EACH	STEEL MAST ARM ASSEMBLY AND POLE, 62 FT.
12	FOOT	CONCRETE FOUNDATION, TYPE A
4	FOOT	CONCRETE FOUNDATION, TYPE C
43	FOOT	CONCRETE FOUNDATION, TYPE E 36-INCH DIAMETER
21	FOOT	CONCRETE FOUNDATION, TYPE E 42-INCH DIAMETER
8	EACH	SIGNAL HEAD, LED, 1-FACE, 3-SECTION, MAST ARM MOUNTED
4	EACH	SIGNAL HEAD, LED, 1-FACE, 5-SECTION, MAST ARM MOUNTED
1	EACH	SIGNAL HEAD, LED, 2-FACE, 3-SECTION, BRACKET MOUNTED
1	EACH	SIGNAL HEAD, LED, 2-FACE, 5-SECTION, BRACKET MOUNTED
2	EACH	SIGNAL HEAD, LED, 2-FACE, 1-3 SECTION, 1-5 SECTION, BRACKET MOUNTED
5	EACH	PEDESTRIAN SIGNAL HEAD, LED, 1-FACE, BRACKET MOUNTED WITH COUNTDOWN TIMER
1	EACH	PEDESTRIAN SIGNAL HEAD, LED, 2-FACE, BRACKET MOUNTED WITH COUNTDOWN TIMER
1	EACH	PEDESTRIAN SIGNAL HEAD, LED, 3-FACE, BRACKET MOUNTED WITH COUNTDOWN TIMER
12	EACH	TRAFFIC SIGNAL BACKPLATE, LOUVERED, ALUMINUM
14	EACH	INDUCTIVE LOOP DETECTOR
814	FOOT	PREFORMED DETECTOR LOOP
9	EACH	PEDESTRIAN PUSH-BUTTON
3	EACH	RELOCATE EXISTING EMERGENCY VEHICLE PRIORITY SYSTEM, DETECTOR UNIT
1	EACH	RELOCATE EXISTING EMERGENCY VEHICLE PRIORITY SYSTEM, PHASING UNIT
70	FOOT	REMOVE AND REINSTALL ELECTRIC CABLE FROM CONDUIT
1	EACH	REMOVE TEMPORARY TRAFFIC SIGNAL INSTALLATION
685	FOOT	EMERGENCY VEHICLE PRIORITY SYSTEM LINE SENSOR CABLE, NO. 20 3/C
1	EACH	FULL-ACTUATED CONTROLLER AND CABINET, TYPE IV, SPECIAL
1	EACH	UNINTERRUPTIBLE POWER SUPPLY, SPECIAL
1	EACH	MODIFY TEMPORARY TRAFFIC SIGNAL INSTALLATION

• 100% COST TO CITY OF ELGIN [ EVP IS PENDING ELGIN CONCURRENCE TO PAY ]

THE CONTRACTOR SHALL RELOCATE THE EXISTING EMERGENCY VEHICLE PRIORITY SYSTEM EQUIPMENTS TO THE NEW TRAFFIC SIGNAL INSTALLATION AT McLEAN BLVD. AT FLEETWOOD DR.



**CONTROLLER SEQUENCE**

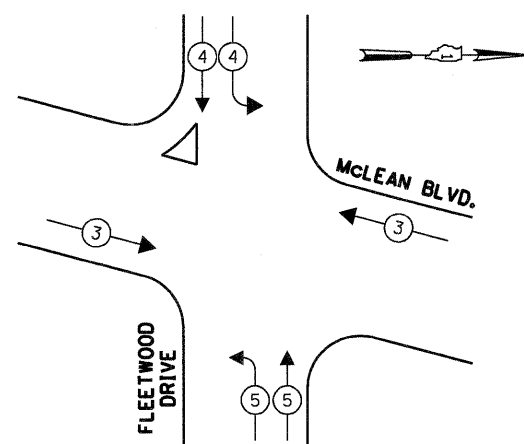


**PHASE DESIGNATION DIAGRAM**

**CABLE PLAN**

(NOT TO SCALE)

**EMERGENCY VEHICLE PREEMPTION SEQUENCE**



THE TRAFFIC SIGNAL CONTROL EQUIPMENT FOR THIS PROJECT SHALL BE "EAGLE" TO MATCH THE EXISTING ADJACENT SYSTEM.

PROPOSED EMERGENCY VEHICLE PREEMPTORS			
EMERGENCY VEHICLE PREEMPTOR	3	4	5
MOVEMENT	↔	↓	↑

I.D.O.T. TRAFFIC SIGNAL INSTALLATION ELECTRICAL SERVICE REQUIREMENTS					TOTAL WATTAGE
TYPE	NO LAMPS	WATTAGE		%OPERATION	
SIGNAL (RED)	20	135	17	0.50	170
(YELLOW)	20	135	25	0.25	125
(GREEN)	20	135	15	0.25	75
ARROW	16	135	12	0.10	19.2
PED. SIGNAL	10	90	25	1.00	250
CONTROLLER ILLUM. SIGN	1	100	100	1.00	100
FLASHER				0.50	
ENERGY COSTS TO:				TOTAL =	739.2

ENERGY COSTS TO:  
 CITY OF ELGIN  
 150 DEXTER COURT  
 ELGIN, ILLINOIS 60120-5570  
 ENERGY SUPPLY CONTACT: **ELLIE SARALLO**  
 PHONE: (630) 424 5124  
 COMPANY: **COMMONWEALTH EDISON**

FILE NAME =	USER NAME = #USER#	DESIGNED - PKG	REVISOR -
#FILE#		DRAWN - MAA, EA	REVISOR -
	PLOT SCALE = #SCALE#	CHECKED - PKG	REVISOR -
	PLOT DATE = #DATE#	DATE - 02/10/2012	REVISOR -

**STATE OF ILLINOIS  
 DEPARTMENT OF TRANSPORTATION**

**CABLE PLAN, PHASE DESIGNATION DIAGRAM,  
 EMERGENCY VEHICLE PREEMPTION SEQUENCE, SCHEDULE OF QUANTITIES  
 McLEAN BOULEVARD AT FLEETWOOD DRIVE**

SCALE: N.T.S. SHEET NO. OF SHEETS STA. TO STA.

F.A.P. RTE. 345	SECTION BR-R	COUNTY KANE	TOTAL SHEETS 794	SHEET NO. 404
CONTRACT NO. 60H45				FED. ROAD DIST. NO. - [ILLINOIS] FED. AID PROJECT